

CUC-DST-GPME-S/DSSC25 - D-SUB sleeve housings



1419719

<https://www.phoenixcontact.com/us/products/1419719>

Please be informed that the data shown in this PDF document is generated from our online catalog. Please find the complete data in the user documentation. Our general terms of use for downloads are valid.

D-SUB sleeve housings, degree of protection: IP20, material: ABS, metal-plated, cable outlet: straight, housing size: 3, color: Bare metallic



Your advantages

- Easy to mount thanks to preassembled locking screws
- Angled conductor entry
- Antimagnetic plastic housing

Commercial data

Item number	1419719
Packing unit	1 pc
Minimum order quantity	1 pc
Sales key	AB19
Product key	ABNCAE
GTIN	4055626187891
Weight per piece (including packing)	27.1 g
Weight per piece (excluding packing)	27.1 g
Customs tariff number	85389099
Country of origin	DE

CUC-DST-GPME-S/DSSC25 - D-SUB sleeve housings



1419719

<https://www.phoenixcontact.com/us/products/1419719>

Technical data

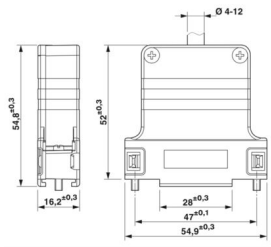
Product properties

Product type	Sleeve housings
Type	D-SUB
No. of cable outlets	1
Cable outlet	straight

Connection data

Screw thread	4-40 UNC
--------------	----------

Dimensions

Dimensional drawing	
Width	54.9 mm
Height	16.2 mm
Depth	56.3 mm

Material specifications

Color	Bare metallic
Flammability rating according to UL 94	V0
Housing material	ABS, metal-plated
Housing surface material	metal-plated

Cable/line

External cable diameter ()	4 mm ... 12 mm
-----------------------------	----------------

Environmental and real-life conditions

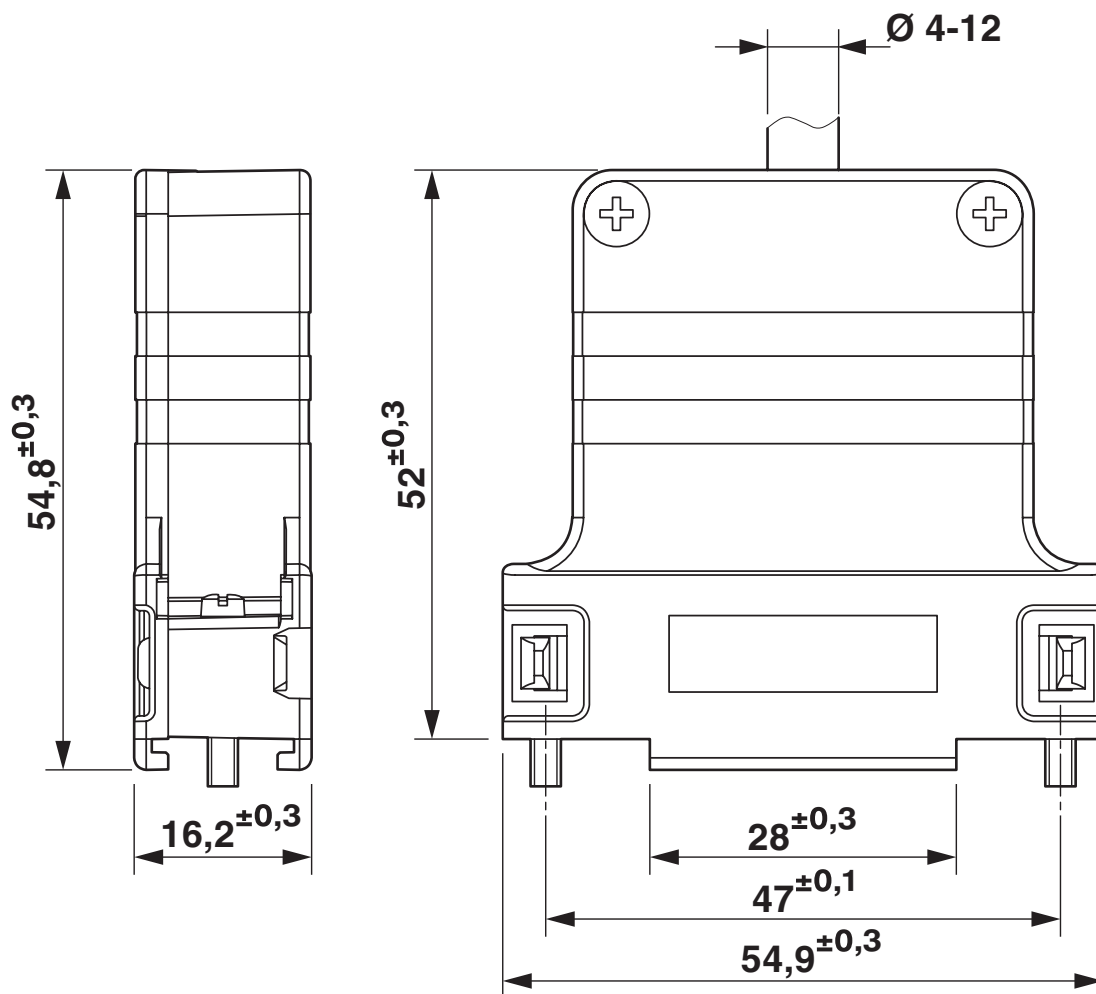
Ambient conditions	
Degree of protection	IP20
Ambient temperature (operation)	-35 °C ... 95 °C

Mounting

Mounting type	Screw locking mechanism
---------------	-------------------------

Drawings

Dimensional drawing



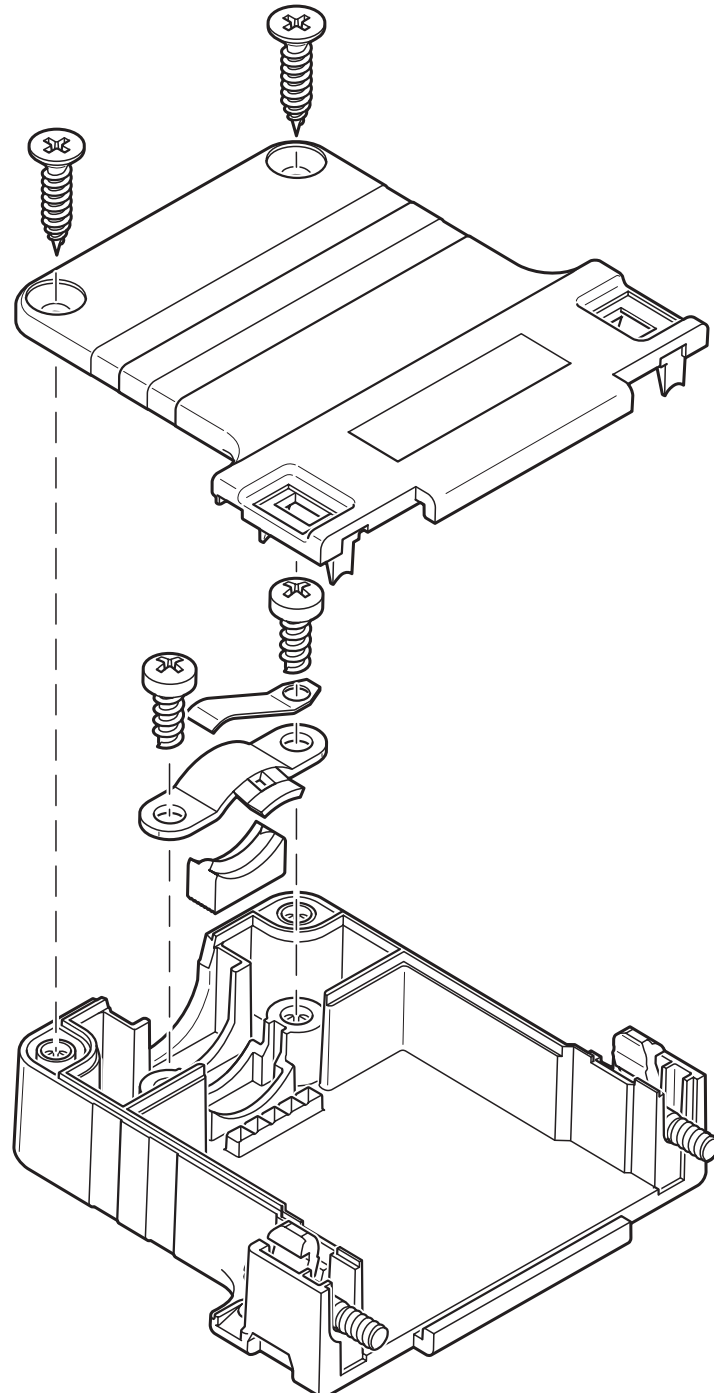
D-SUB sleeve housings

CUC-DST-GPME-S/DSSC25 - D-SUB sleeve housings

1419719

<https://www.phoenixcontact.com/us/products/1419719>

Schematic diagram





1419719

<https://www.phoenixcontact.com/us/products/1419719>

Classifications

ECLASS

ECLASS-11.0	27440202
ECLASS-12.0	27440202
ECLASS-13.0	27440202

ETIM

ETIM 9.0	EC000437
----------	----------

UNSPSC

UNSPSC 21.0	31261500
-------------	----------

Environmental product compliance

EU RoHS	
Fulfills EU RoHS substance requirements	Yes, No exemptions
China RoHS	
Environment friendly use period (EFUP)	EFUP-E
	No hazardous substances above the limits
EU REACH SVHC	
REACH candidate substance (CAS No.)	No substance above 0.1 wt%

CUC-DST-GPME-S/DSSC25 - D-SUB sleeve housings



1419719

<https://www.phoenixcontact.com/us/products/1419719>

Accessories

CUC-DST-ABK-CP8 - Bend protection sleeve

1419791

<https://www.phoenixcontact.com/us/products/1419791>



Bend protection sleeve, degree of protection: IP20, color: black

CUC-DST-ABK-CP9 - Bend protection sleeve

1419792

<https://www.phoenixcontact.com/us/products/1419792>



Bend protection sleeve, degree of protection: IP20, color: black

CUC-DST-GPME-S/DSSC25 - D-SUB sleeve housings



1419719

<https://www.phoenixcontact.com/us/products/1419719>

CUC-DST-ABK-CP9,7 - Bend protection sleeve

1419793

<https://www.phoenixcontact.com/us/products/1419793>



Bend protection sleeve, degree of protection: IP20, color: black

CUC-DST-ABK-CP7,5 - Bend protection sleeve

1419794

<https://www.phoenixcontact.com/us/products/1419794>



Bend protection sleeve, degree of protection: IP20, color: black

CUC-DST-GPME-S/DSSC25 - D-SUB sleeve housings



1419719

<https://www.phoenixcontact.com/us/products/1419719>

VS-25-ST-DSUB-EG - Contact insert

1689899

<https://www.phoenixcontact.com/us/products/1689899>

D-SUB contact insert, shell size 3, with 25 signal contacts, type of contact pin, with solder cup, straight, fixing with a 3 mm hole, for panel mounting frame and sleeve housing VS-25-...



VS-25-BU-DSUB-EG - Contact insert

1689909

<https://www.phoenixcontact.com/us/products/1689909>

D-SUB contact insert, shell size 3, with 25 signal contacts, type of contact socket, with solder cup, straight, fixing with a 3 mm hole, for panel mounting frame and sleeve housing VS-25-...



CUC-DST-GPME-S/DSSC25 - D-SUB sleeve housings



1419719

<https://www.phoenixcontact.com/us/products/1419719>

VS-25-ST-DSUB-HD-EG - D-SUB contact insert

1655234

<https://www.phoenixcontact.com/us/products/1655234>

D-SUB contact insert, shell size 3, with 44 signal contacts, type of contact pin, with solder cup, straight, fixing with a 3 mm hole, for panel mounting frame and sleeve housing VS-25-...



VS-25-BU-DSUB-HD-EG - D-SUB contact insert

1655221

<https://www.phoenixcontact.com/us/products/1655221>

D-SUB contact insert, shell size 3, with 44 signal contacts, type of contact socket, with solder cup, straight, fixing with a 3 mm hole, for panel mounting frame and sleeve housing VS-25-...



CUC-DST-GPME-S/DSSC25 - D-SUB sleeve housings



1419719

<https://www.phoenixcontact.com/us/products/1419719>

VS-25-ST-DSUB-CD-B - D-SUB contact support

1689954

<https://www.phoenixcontact.com/us/products/1689954>

D-SUB contact carrier, shell size 3, for 25 signal contacts, type of contact pin, for crimp contacts, straight, fixing with a 3 mm hole, for panel mounting frame and sleeve housing VS-25-...



VS-25-BU-DSUB-CD-B - D-SUB contact support

1689967

<https://www.phoenixcontact.com/us/products/1689967>

D-SUB contact carrier, shell size 3, for 25 signal contacts, type of contact socket, for crimp contacts, straight, fixing with a 3 mm hole, for panel mounting frame and sleeve housing VS-25-...



CUC-DST-GPME-S/DSSC25 - D-SUB sleeve housings



1419719

<https://www.phoenixcontact.com/us/products/1419719>

VS-25-ST-DSUB-HD-CD-B - D-SUB contact support

1655250

<https://www.phoenixcontact.com/us/products/1655250>

D-SUB contact carrier, shell size 3, for 44 signal contacts, type of contact pin, for crimp contacts, straight, fixing with a 3 mm hole, for panel mounting frame and sleeve housing VS-25-...



VS-25-BU-DSUB-HD-CD-B - D-SUB contact support

1655247

<https://www.phoenixcontact.com/us/products/1655247>

D-SUB contact carrier, shell size 3, for 44 signal contacts, type of contact socket, for crimp contacts, straight, fixing with a 3 mm hole, for panel mounting frame and sleeve housing VS-25-...



CUC-DST-GPME-S/DSSC25 - D-SUB sleeve housings



1419719

<https://www.phoenixcontact.com/us/products/1419719>

VS-25-ST-DSUB-5P - D-SUB contact support

1689970

<https://www.phoenixcontact.com/us/products/1689970>

D-SUB contact carrier, shell size 3, accommodation for five combined contacts, type of contact pin, straight, fixing with a 3 mm hole, for panel mounting frame and sleeve housing VS-25-...

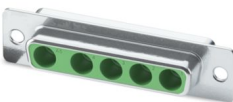


VS-25-BU-DSUB-5P - D-SUB contact support

1689983

<https://www.phoenixcontact.com/us/products/1689983>

D-SUB contact carrier, shell size 3, accommodation for five combined contacts, type of contact socket, straight, fixing with a 3 mm hole, for panel mounting frame and sleeve housing VS-25-...



Phoenix Contact 2024 © - all rights reserved
<https://www.phoenixcontact.com>

Phoenix Contact USA
586 Fulling Mill Road
Middletown, PA 17057, United States
(+717) 944-1300
info@phoenixcon.com