

# CUC-DST-GPME-A/DSSC15 - D-SUB sleeve housings



1419718

<https://www.phoenixcontact.com/us/products/1419718>

Please be informed that the data shown in this PDF document is generated from our online catalog. Please find the complete data in the user documentation. Our general terms of use for downloads are valid.



D-SUB sleeve housings, degree of protection: IP20, material: ABS, metal-plated, cable outlet: angled, housing size: 2, color: Bare metallic

## Your advantages

- Easy to mount thanks to preassembled locking screws
- Angled conductor entry
- Antimagnetic plastic housing

## Commercial data

Item number	1419718
Packing unit	1 pc
Minimum order quantity	1 pc
Sales key	AB19
Product key	ABNCAE
GTIN	4055626187884
Weight per piece (including packing)	18.2 g
Weight per piece (excluding packing)	18 g
Customs tariff number	85389099
Country of origin	DE

1419718

<https://www.phoenixcontact.com/us/products/1419718>

## Technical data

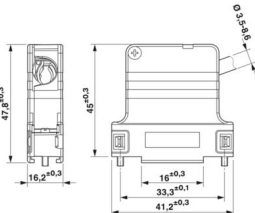
### Product properties

Product type	Sleeve housings
Type	D-SUB
No. of cable outlets	1
Cable outlet	angled

### Connection data

Screw thread	4-40 UNC
--------------	----------

### Dimensions

Dimensional drawing	
Width	41.2 mm
Height	16.2 mm
Depth	49.4 mm

### Material specifications

Color	Bare metallic
Flammability rating according to UL 94	V0
Housing material	ABS, metal-plated
Housing surface material	metal-plated

### Cable/line

External cable diameter	3.5 mm ... 8.6 mm
-------------------------	-------------------

### Environmental and real-life conditions

#### Ambient conditions

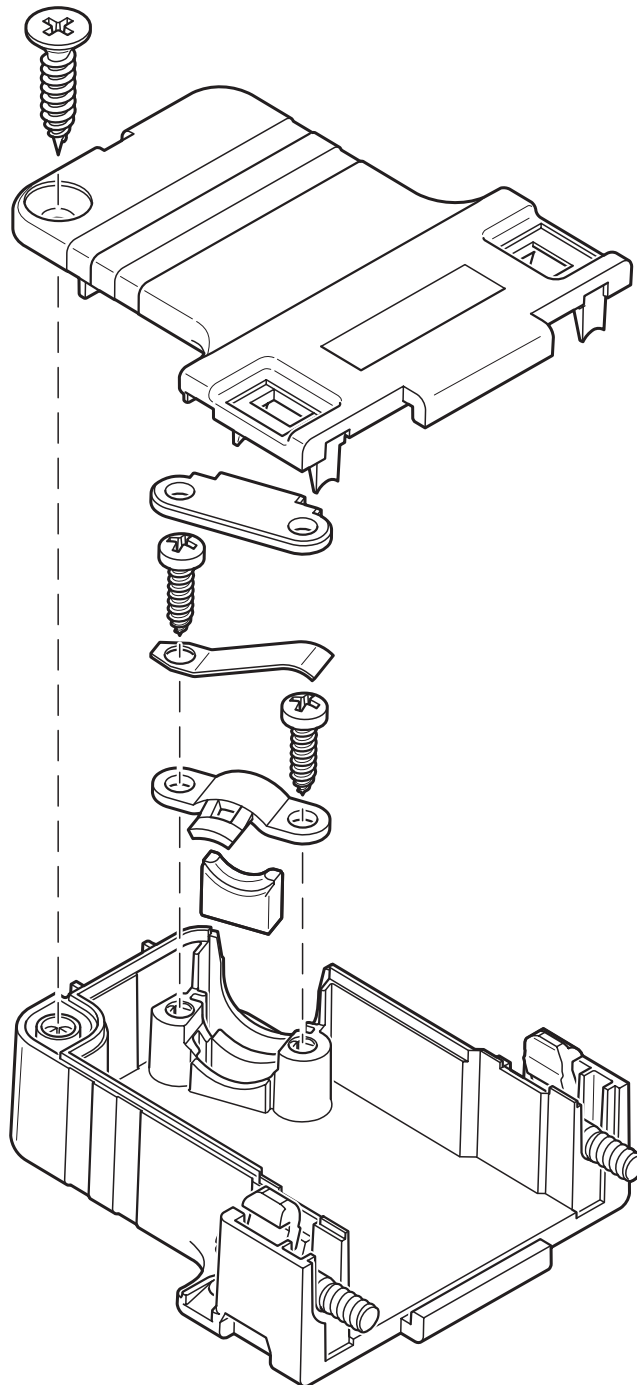
Degree of protection	IP20
Ambient temperature (operation)	-35 °C ... 95 °C

### Mounting

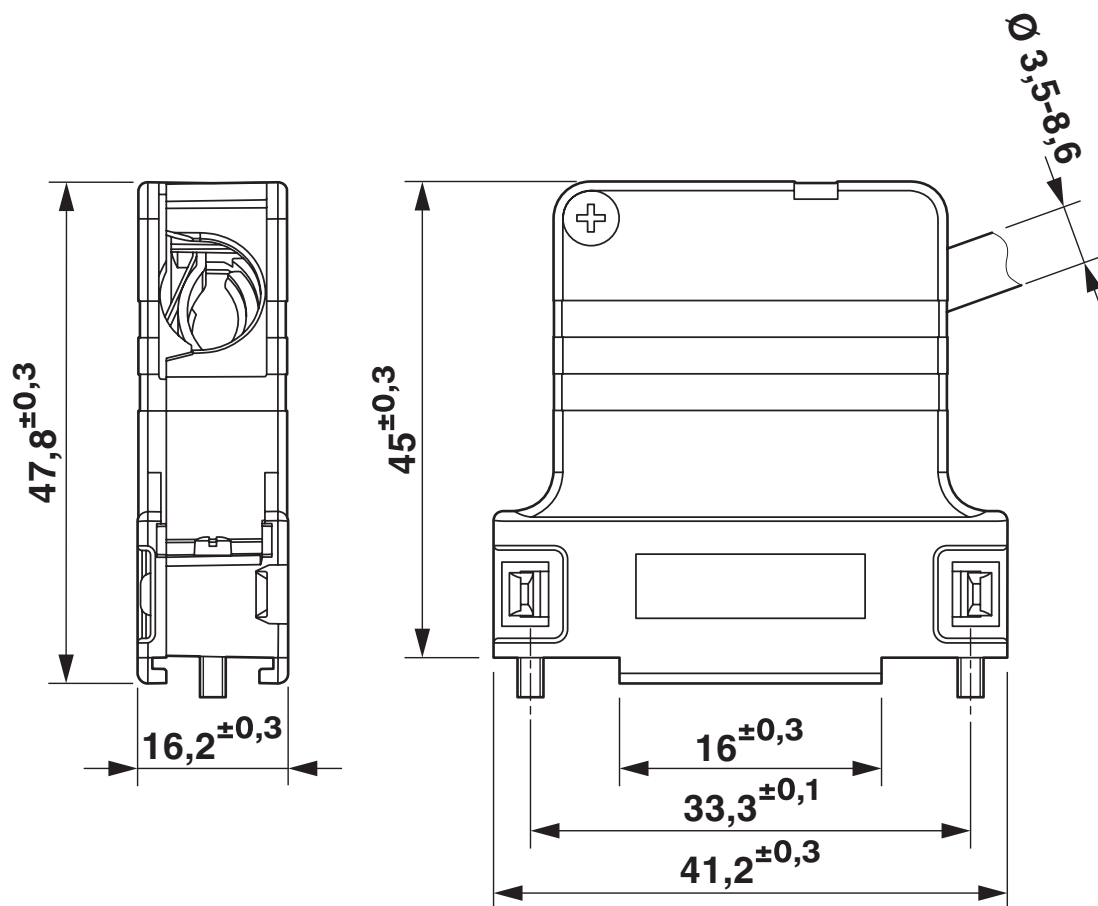
Mounting type	Screw locking mechanism
---------------	-------------------------

## Drawings

Schematic diagram



Dimensional drawing



D-SUB sleeve housings

# CUC-DST-GPME-A/DSSC15 - D-SUB sleeve housings



1419718

<https://www.phoenixcontact.com/us/products/1419718>

## Classifications

### ECLASS

ECLASS-11.0	27440202
ECLASS-12.0	27440202
ECLASS-13.0	27440202

### ETIM

ETIM 9.0	EC000437
----------	----------

### UNSPSC

UNSPSC 21.0	31261500
-------------	----------

Environmental product compliance

EU RoHS	
Fulfills EU RoHS substance requirements	Yes, No exemptions
China RoHS	
Environment friendly use period (EFUP)	EFUP-E
	No hazardous substances above the limits
EU REACH SVHC	
REACH candidate substance (CAS No.)	No substance above 0.1 wt%

# CUC-DST-GPME-A/DSSC15 - D-SUB sleeve housings



1419718

<https://www.phoenixcontact.com/us/products/1419718>

## Accessories

### CUC-DST-ABK-CP6,5 - Bend protection sleeve

1419790

<https://www.phoenixcontact.com/us/products/1419790>



Bend protection sleeve, degree of protection: IP20, color: black

---

### CUC-DST-ABK-CP8 - Bend protection sleeve

1419791

<https://www.phoenixcontact.com/us/products/1419791>



Bend protection sleeve, degree of protection: IP20, color: black

# CUC-DST-GPME-A/DSSC15 - D-SUB sleeve housings



1419718

<https://www.phoenixcontact.com/us/products/1419718>

## VS-15-ST-DSUB-EG - Contact insert

1688874

<https://www.phoenixcontact.com/us/products/1688874>

D-SUB contact insert, shell size 2, with 15 signal contacts, type of contact pin, with solder cup, straight, fixing with a 3 mm hole, for panel mounting frame and sleeve housing VS-15-...



---

## VS-15-BU-DSUB-EG - Contact insert

1688887

<https://www.phoenixcontact.com/us/products/1688887>

D-SUB contact insert, shell size 2, with 15 signal contacts, type of contact socket, with solder cup, straight, fixing with a 3 mm hole, for panel mounting frame and sleeve housing VS-15-...





# CUC-DST-GPME-A/DSSC15 - D-SUB sleeve housings



1419718

<https://www.phoenixcontact.com/us/products/1419718>

## VS-15-ST-DSUB-HD-EG - D-SUB contact insert

1655179

<https://www.phoenixcontact.com/us/products/1655179>

D-SUB contact insert, shell size 2, with 26 signal contacts, type of contact pin, with solder cup, straight, fixing with a 3 mm hole, for panel mounting frame and sleeve housing VS-15-...



---

## VS-15-BU-DSUB-HD-EG - D-SUB contact insert

1655166

<https://www.phoenixcontact.com/us/products/1655166>

D-SUB contact insert, shell size 2, with 26 signal contacts, type of contact socket, with solder cup, straight, fixing with a 3 mm hole, for panel mounting frame and sleeve housing VS-15-...



# CUC-DST-GPME-A/DSSC15 - D-SUB sleeve housings



1419718

<https://www.phoenixcontact.com/us/products/1419718>

## VS-15-ST-DSUB-CD-OG - D-SUB contact support

1688939

<https://www.phoenixcontact.com/us/products/1688939>

D-SUB contact carrier, shell size 2, for 15 signal contacts, type of contact pin, for crimp contacts, straight, fixing with a 3 mm hole, for panel mounting frame and sleeve housing VS-15-...



---

## VS-15-BU-DSUB-CD-OG - D-SUB contact support

1688942

<https://www.phoenixcontact.com/us/products/1688942>

D-SUB contact carrier, shell size 2, for 15 signal contacts, type of contact socket, for crimp contacts, straight, fixing with a 3 mm hole, for panel mounting frame and sleeve housing VS-15-...



# CUC-DST-GPME-A/DSSC15 - D-SUB sleeve housings



1419718

<https://www.phoenixcontact.com/us/products/1419718>

## VS-15-ST-DSUB-HD-CD-B - D-SUB contact support

1655195

<https://www.phoenixcontact.com/us/products/1655195>

D-SUB contact carrier, shell size 2, for 26 signal contacts, type of contact pin, for crimp contacts, straight, fixing with a 3 mm hole, for panel mounting frame and sleeve housing VS-15-...



---

## VS-15-BU-DSUB-HD-CD-B - D-SUB contact support

1655182

<https://www.phoenixcontact.com/us/products/1655182>

D-SUB contact carrier, shell size 2, for 26 signal contacts, type of contact socket, for crimp contacts, straight, fixing with a 3 mm hole, for panel mounting frame and sleeve housing VS-15-...



# CUC-DST-GPME-A/DSSC15 - D-SUB sleeve housings



1419718

<https://www.phoenixcontact.com/us/products/1419718>

## VS-15-ST-DSUB-3P - D-SUB contact support

1688201

<https://www.phoenixcontact.com/us/products/1688201>

D-SUB contact carrier, shell size 2, accommodation for three combined contacts, type of contact pin, straight, fixing with a 3 mm hole, for panel mounting frame and sleeve housing VS-15-...



---

## VS-15-BU-DSUB-3P - D-SUB contact support

1688214

<https://www.phoenixcontact.com/us/products/1688214>

D-SUB contact carrier, shell size 2, accommodation for three combined contacts, type of contact socket, straight, fixing with a 3 mm hole, for panel mounting frame and sleeve housing VS-15-...



---

Phoenix Contact 2024 © - all rights reserved  
<https://www.phoenixcontact.com>

Phoenix Contact USA  
586 Fulling Mill Road  
Middletown, PA 17057, United States  
(+717) 944-1300  
[info@phoenixcon.com](mailto:info@phoenixcon.com)