

6

5

4

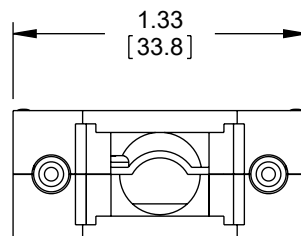
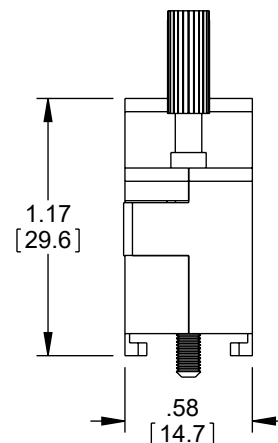
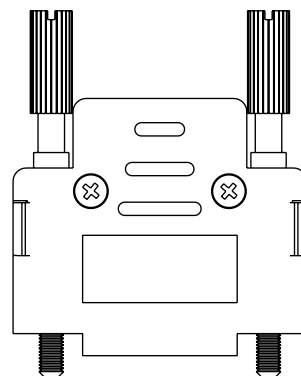
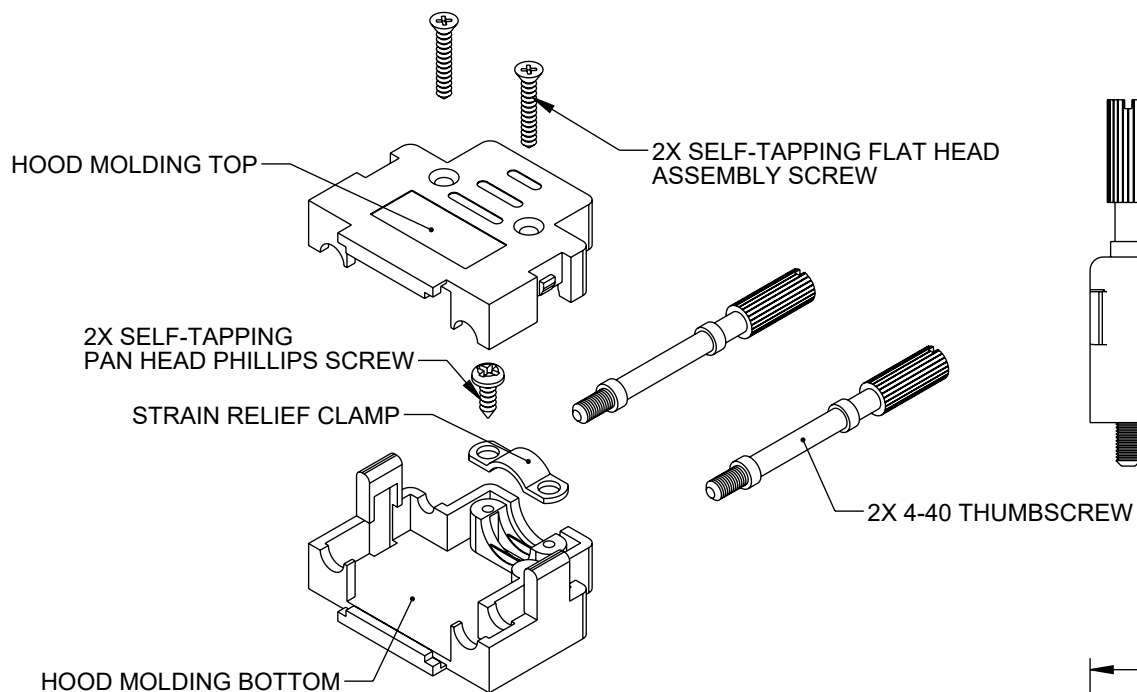
3

2

1

## REVISION

ZONE	REV.	DESCRIPTION	DATE	CHANGED BY	APPROVED BY
	A	INITIAL RELEASE	09/08/2023	BPUCHASKI	GUTTADAURO



## NOTES:

## MATERIAL:

HOOD MOLDING: ABS THERMOPLASTIC

THUMBSCREW: STEEL

SELF-TAPPING SCREW: STEEL

STRAIN RELIEF CLAMP: STEEL

## FINISH:

HOOD MOLDING: METALIZED, CHROME ALL SURFACES

THUMBSCREW: NICKEL PLATED

SELF-TAPPING SCREW: NICKEL PLATED

STRAIN RELIEF CLAMP: NICKEL PLATED

ALL DIMENSIONS ARE FOR REFERENCE ONLY.

## REGULATORY COMPLIANCE:

EU RoHS DIRECTIVE (MOST RECENT RELEASED VERSION)

UNLESS OTHERWISE SPECIFIED  
LEADING DIMENSIONS ARE INCHES  
DIMENSIONS IN [ ] ARE MILLIMETERS

## TOLERANCES:

.X =  $\pm 0.2$  [5].XX =  $\pm 0.02$  [0.5].XXX =  $\pm 0.005$  [0.13]

FRACTIONS

 $\pm 1/32$ ANGLES  $\pm 1^\circ$ 

## CABLE LENGTH TOLERANCES:

 $\leq 12$  [305] =  $\pm 1$  [25] / -0 $> 12$  [305]  $\leq 60$  [1524] =  $\pm 2$  [51] / -0 $> 60$  [1524]  $\leq 120$  [3048] =  $\pm 4$  [102] / -0 $> 120$  [3048]  $\leq 300$  [7620] =  $\pm 6$  [152] / -0 $> 300$  [7620] =  $\pm 5\%$  / -0

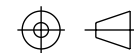
ALL DIMENSIONS ARE FOR REFERENCE ONLY

AND SUBJECT TO CHANGE WITHOUT NOTICE.

UN-DIMENSIONED/NON-CRITICAL FEATURES

MAY VARY IN SIZE AND LOCATION

COLORS MAY VARY

**PE PASTERNAK**  
an INFINIT® brandWebsite: [www.Pasternack.com](http://www.Pasternack.com)  
Phone: 1.866.727.8376 | 1.949.261.1920INTERPRET ALL DIMENSIONS AND  
TOLERANCES PER ASME Y14.5

SCALE

NONE

SHEET

1 OF 1

## DESCRIPTION

ASSEMBLED D-SUB HOOD KIT, DB9/HD15 MATTE  
CHROME

SIZE

A

CAGE CODE

53919

DRAWN BY

BPUCHASKI

ITEM NO.

PE1049

REV

A

THE INFORMATION CONTAINED IN THIS DRAWING IS THE SOLE PROPERTY OF INFINITE ELECTRONICS, INC. ANY REPRODUCTION IN PART OR WHOLE WITHOUT THE WRITTEN PERMISSION OF INFINITE ELECTRONICS, INC. IS PROHIBITED. THESE COMMODITIES, TECHNOLOGY OR SOFTWARE WERE EXPORTED FROM THE UNITED STATES IN ACCORDANCE WITH THE EXPORT ADMINISTRATION REGULATIONS. DIVERSION CONTRARY TO U.S. LAW PROHIBITED.

6

5

4

3

2

1