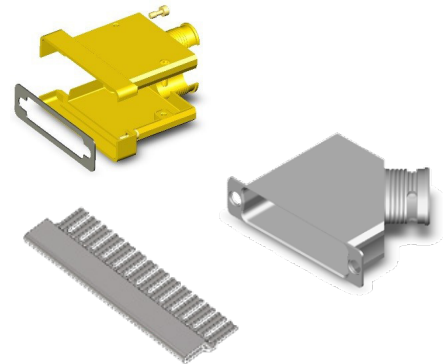


### Features and Benefits

- Standard and Haloring variant
- Ultra-light weight
- Solid fully machined aluminium alloy material
- Non-Magnetic
- EMI application

### Typical Applications

- Space equipment (engineering model, constellations)
- Satellites harnesses
- Avionics/ Military



### Specification

- High performance D-SUB Lightweight Backshells and Haloring meet stringent tests for residual magnetism and are suitable for use in Space Engineering Model, Avionics and Military applications.
- Suitable for Board to Cable or Cable to Cable applications.
- Shell sizes available: E, A, B, C, D and F
- 3 variants:
  - Standard Lightweight Backshell
  - Lightweight Backshell for EMI Application
  - Lightweight Backshell Haloring Compatible

### Quality Level

- “Commercial Space Grade”.
  - C&K Specification CS FR022, for low cost products manufactured:
    - In the same ESA qualified site
    - Through the same piece parts
    - With lighter controls, documentation and traceability
- The backshells are totally compatible, interchangeable and intermateable with ESA quality level connectors ESCC 3401/001 (D\*M connectors), 3401/002 (D\*MA connectors) and 3401/072 (Backshells).

### Options

- Haloring – Be ordered separately.
- Male screwlock with clip - Be ordered separately.

### Packaging

- Individual packaging.

### Characteristics




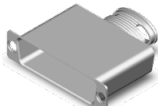
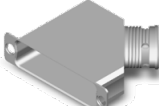
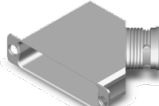
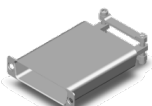

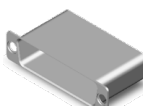
CHARACTERISTIC	SPECIFICATION
Operating temperature range	-55/+125 °C
Storage temperature range	-55/+125 °C
Residual Magnetism Level	200 Gamma max.

## MATERIALS & FINISHES

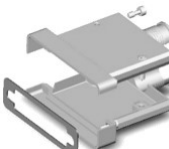
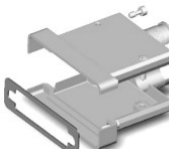
COMPONENT	MATERIAL	FINISH
Backshell	Aluminium Alloy 6061-T6	<b>Code A174:</b> 25.4 µm min. electroless Nickel <b>Code FR172:</b> 0.7 µm min. Gold over 25.4 µm min. electroless Nickel
Haloring	Copper Alloy	5µm min. Silver
Screws	Brass	0.7 µm Gold over 1 µm min. Cu
EMI Gasket	Silicone conductive elastomer	None

# PRODUCT LIST

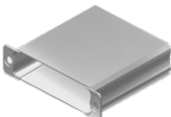
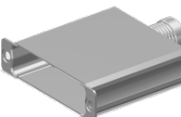
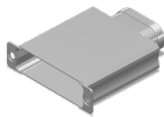
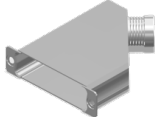
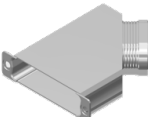
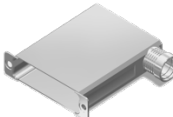
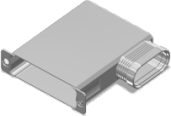
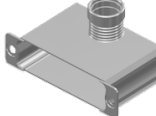
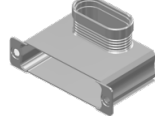
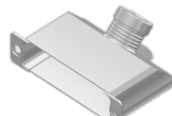
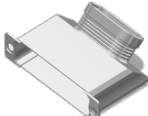
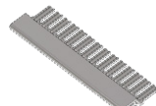
## STANDARD LIGHTWEIGHT BACKSHELL

		
90° Circular Right Outlet Page 4	90° Circular Left Outlet Page 5	Top Circular Outlet Page 6
		
Top Elliptical Outlet Page 7	45° Elliptical Right Outlet Page 8	45° Elliptical Left Outlet Page 9
		
Saddle Clamp Top Outlet Page 10	Closed Extra Shorting Can Page 11	Closed Shorting Can Page 12

## LIGHTWEIGHT BACKSHELL - EMI APPLICATION

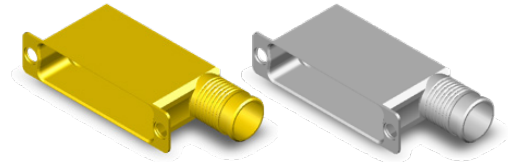
	
Top Cylindrical Outlet - Rear Mounting Page 14	Top Cylindrical Outlet - Front Mounting Page 16

## LIGHTWEIGHT BACKSHELLS - HALORING COMPATIBLE AND HALORING

		
Closed Shorting Can Page 19	Top Circular Outlet Page 20	Top Elliptical Outlet Page 21
		
45° Circular Outlet Page 22	45° Elliptical Outlet Page 23	90° Circular Outlet Page 24
		
90° Elliptical Outlet Page 25	90° Top Circular Outlet Page 26	90° Top Elliptical Outlet Page 27
		
45° Top Circular Outlet Page 28	45° Top Elliptical Outlet Page 29	Haloring Page 30

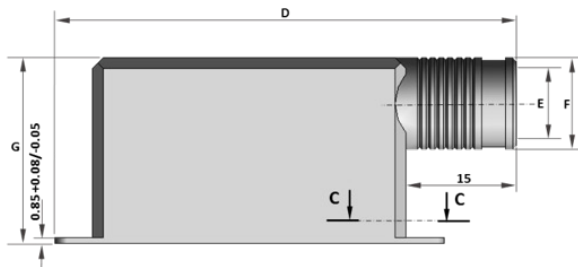
# STANDARD BACKSHELL LIGHTWEIGHT

**D-Sub Lightweight Backshell**  
**90° Circular - Right Outlet**  
*(Our design accepts right or left mounting)*

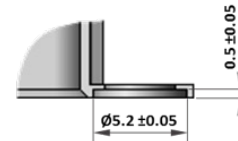


**DIMENSIONS & WEIGHT**

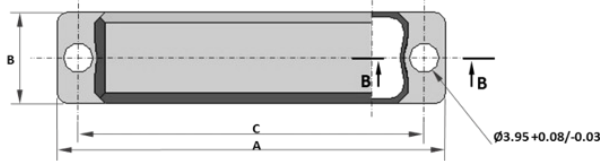
		Value							Weight (grams)
		A ±0.2	B ±0.15	C ±0.13	D ±0.50	E ±0.15	F ±0.15	G ±0.50	
Shell Size	E	30.68	12.50	24.99	40.60	7.00	9.00	25.40	7
	A	39.01	12.50	33.32	49.00	10.00	12.00	25.40	10
	B	52.91	12.50	47.04	62.70	10.50	12.50	25.40	13.5
	C	69.19	12.50	63.50	79.20	10.50	12.50	25.40	18
	D	66.80	15.30	61.11	76.70	13.30	15.30	25.40	23
	F	69.30	17.30	63.50	79.90	15.30	17.30	35.40	28



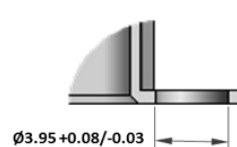
**Detail B-B**



**Configuration Sizes E-A-B-C-D**




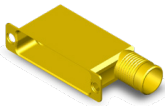
**Detail A-A**



**Configuration Size F**



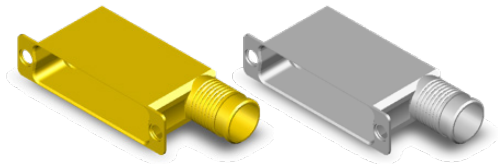
**DESCRIPTION & PART NUMBERS**

SHELL FINISH	SHELL SIZE	ESA/ESCC DESCRIPTION	C&K PART NUMBER
 Electroless Nickel	E	DE-BCKS-05-NMB-A174-FR022	C115366-2606B
	A	DA-BCKS-05-NMB-A174-FR022	C115366-2607B
	B	DB-BCKS-05-NMB-A174-FR022	C115366-2608B
	C	DC-BCKS-05-NMB-A174-FR022	C115366-2609B
	D	DD-BCKS-05-NMB-A174-FR022	C115366-2610B
	F	DF-BCKS-05-NMB-A174-FR022	C115366-2691B
 Gold	E	DE-BCKS-05-NMB-FR172-FR022	C115366-2606A
	A	DA-BCKS-05-NMB-FR172-FR022	C115366-2607A
	B	DB-BCKS-05-NMB-FR172-FR022	C115366-2608A
	C	DC-BCKS-05-NMB-FR172-FR022	C115366-2609A
	D	DD-BCKS-05-NMB-FR172-FR022	C115366-2610A
	F	DF-BCKS-05-NMB-FR172-FR022	C115366-2691A



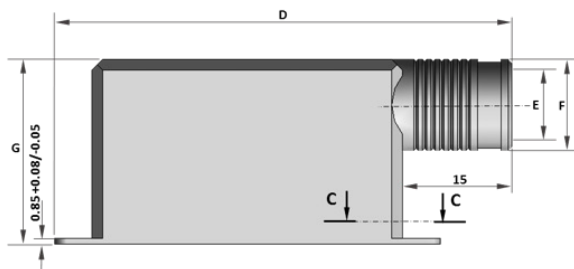
Dimensions shown in: mm  
 Specifications and dimensions subject to change

**D-Sub Lightweight Backshell**  
**90° Circular - Left Outlet**  
*(Our design accepts right or left mounting)*

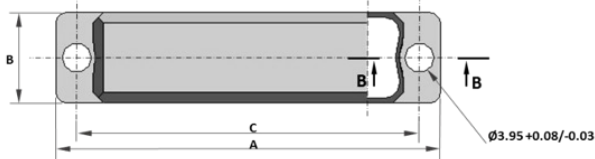


**DIMENSIONS & WEIGHT**

		Value							Weight (grams)
		A ±0.2	B ±0.15	C ±0.13	D ±0.50	E ±0.15	F ±0.15	G ±0.50	
Shell Size	E	30.68	12.50	24.99	40.60	7.00	9.00	25.40	7
	A	39.01	12.50	33.32	49.00	10.00	12.00	25.40	10
	B	52.91	12.50	47.04	62.70	10.50	12.50	25.40	13.5
	C	69.19	12.50	63.50	79.20	10.50	12.50	25.40	18
	D	66.80	15.30	61.11	76.70	13.30	15.30	25.40	23
	F	69.30	17.30	63.50	79.90	15.30	17.30	35.40	28



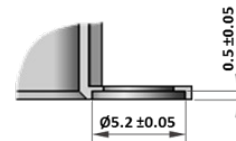
**Configuration Sizes E-A-B-C-D**



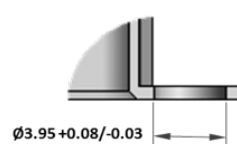
**Configuration Size F**




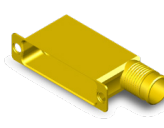
**Detail B-B**



**Detail A-A**

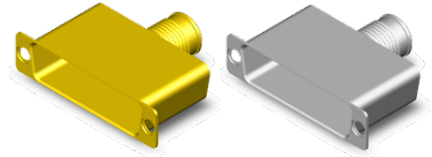


**DESCRIPTION & PART NUMBERS**

SHELL FINISH	SHELL SIZE	ESA/ESCC DESCRIPTION	C&K PART NUMBER
 Electroless Nickel	E	DE-BCKS-06-NMB-A174-FR022	C115366-2611B
	A	DA-BCKS-06-NMB-A174-FR022	C115366-2612B
	B	DB-BCKS-06-NMB-A174-FR022	C115366-2613B
	C	DC-BCKS-06-NMB-A174-FR022	C115366-2614B
	D	DD-BCKS-06-NMB-A174-FR022	C115366-2615B
	F	DF-BCKS-05-NMB-A174-FR022	C115366-2691B
 Gold	E	DE-BCKS-06-NMB-FR172-FR022	C115366-2611A
	A	DA-BCKS-06-NMB-FR172-FR022	C115366-2612A
	B	DB-BCKS-06-NMB-FR172-FR022	C115366-2613A
	C	DC-BCKS-06-NMB-FR172-FR022	C115366-2614A
	D	DD-BCKS-06-NMB-FR172-FR022	C115366-2615A
	F	DF-BCKS-05-NMB-FR172-FR022	C115366-2691A

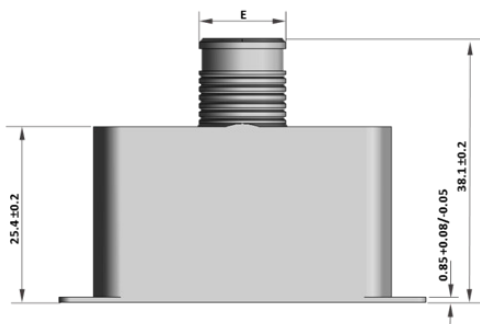
Dimensions shown in: mm  
 Specifications and dimensions subject to change

# D-Sub Lightweight Backshell Top Circular Outlet

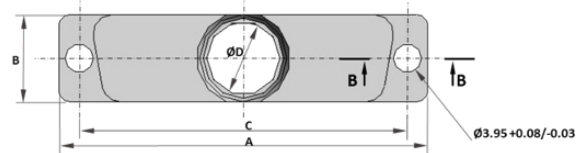


## DIMENSIONS & WEIGHT

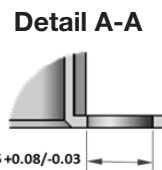
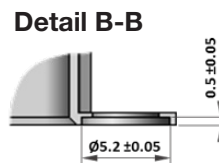
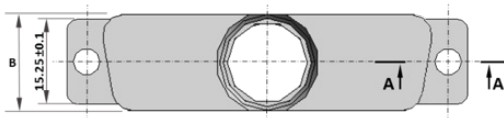
		Value					Weight (grams)
		A ±0.2	B ±0.15	C ±0.13	D ±0.20	E ±0.15	
Shell Size	E	30.68	12.50	24.99	7.00	9.00	6.5
	A	39.01	12.50	33.32	10.00	12.00	8.5
	B	52.91	12.50	47.04	10.50	12.50	11.5
	C	69.19	12.50	63.50	10.50	12.50	13.5
	D	66.80	15.30	61.11	13.30	15.30	14.5
	F	69.30	17.30	63.50	15.30	17.30	16.5



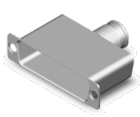
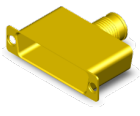
Configuration Sizes E-A-B-C-D



Configuration Size F



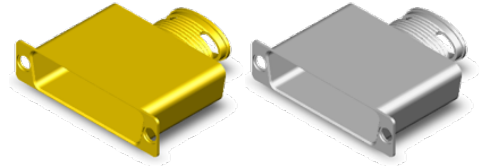
## DESCRIPTION & PART NUMBERS

SHELL FINISH	SHELL SIZE	ESA/ESCC DESCRIPTION	C&K PART NUMBER
 Electroless Nickel	E	DE-BCKS-07-NMB-A174-FR022	C115366-2616B
	A	DA-BCKS-07-NMB-A174-FR022	C115366-2617B
	B	DB-BCKS-07-NMB-A174-FR022	C115366-2618B
	C	DC-BCKS-07-NMB-A174-FR022	C115366-2619B
	D	DD-BCKS-07-NMB-A174-FR022	C115366-2620B
	F	DF-BCKS-07-NMB-A174-FR022	C115366-2692B
 Gold	E	DE-BCKS-07-NMB-FR172-FR022	C115366-2616A
	A	DA-BCKS-07-NMB-FR172-FR022	C115366-2617A
	B	DB-BCKS-07-NMB-FR172-FR022	C115366-2618A
	C	DC-BCKS-07-NMB-FR172-FR022	C115366-2619A
	D	DD-BCKS-07-NMB-FR172-FR022	C115366-2620A
	F	DF-BCKS-07-NMB-FR172-FR022	C115366-2692A



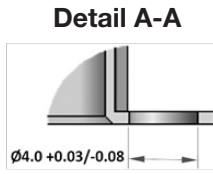
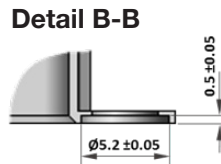
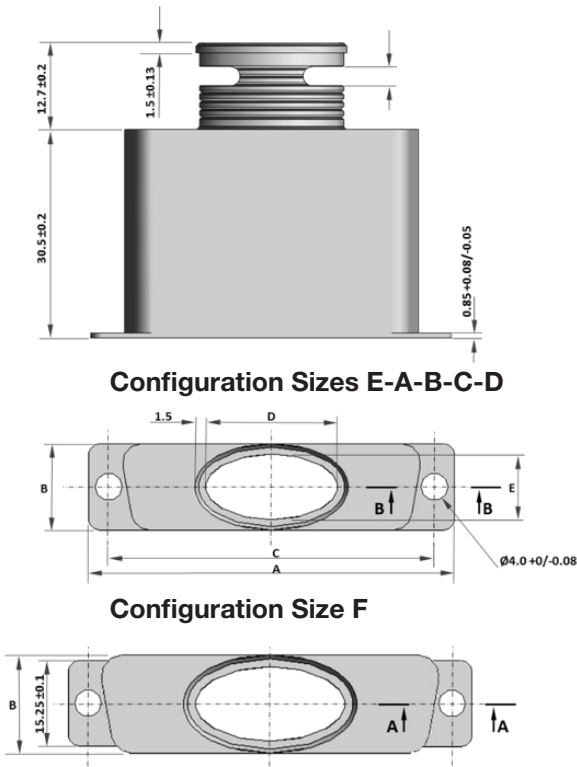
Dimensions shown in: mm  
Specifications and dimensions subject to change

# D-Sub Lightweight Backshell Top Elliptical Outlet

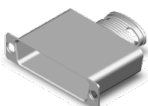
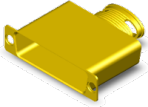


## DIMENSIONS & WEIGHT

		Value					Weight (grams)
		A ±0.2	B ±0.15	C ±0.13	D ±0.38	E ±0.15	
Shell Size	E	30.68	12.50	24.99	12.70	9.50	8
	A	39.01	12.50	33.32	15.87	9.50	13
	B	52.91	12.50	47.04	19.05	9.50	18
	C	69.19	12.50	63.50	25.40	9.50	23
	D	66.80	15.30	61.11	22.22	12.30	28
	F	69.30	17.30	63.50	32.00	14.30	33



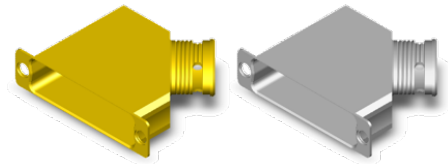
## DESCRIPTION & PART NUMBERS

SHELL FINISH	SHELL SIZE	ESA/ESCC DESCRIPTION	C&K PART NUMBER
 Electroless Nickel	E	DE-BCKS-11-NMB-A174-FR022	C115366-2622B
	A	DA-BCKS-11-NMB-A174-FR022	C115366-2623B
	B	DB-BCKS-11-NMB-A174-FR022	C115366-2624B
	C	DC-BCKS-11-NMB-A174-FR022	C115366-2625B
	D	DD-BCKS-11-NMB-A174-FR022	C115366-2626B
	F	DF-BCKS-11-NMB-A174-FR022	C115366-2693B
 Gold	E	DE-BCKS-11-NMB-FR172-FR022	C115366-2622A
	A	DA-BCKS-11-NMB-FR172-FR022	C115366-2623A
	B	DB-BCKS-11-NMB-FR172-FR022	C115366-2624A
	C	DC-BCKS-11-NMB-FR172-FR022	C115366-2625A
	D	DD-BCKS-11-NMB-FR172-FR022	C115366-2626A
	F	DF-BCKS-11-NMB-FR172-FR022	C115366-2693A

Dimensions shown in: mm  
Specifications and dimensions subject to change

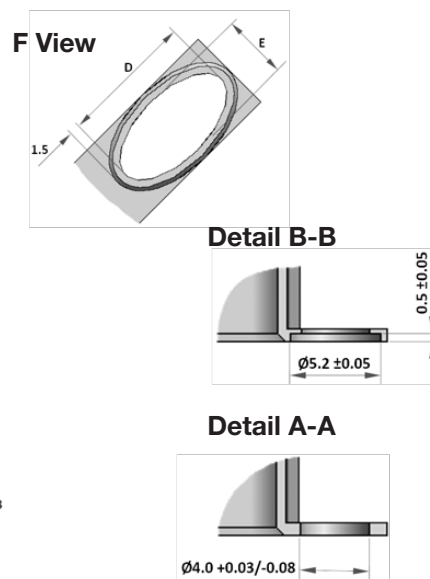
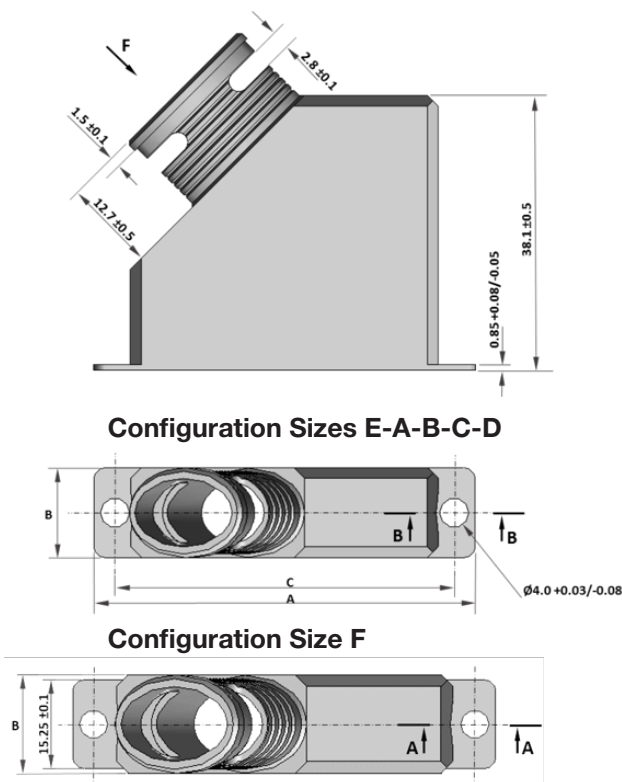


**D-Sub Lightweight Backshell**  
**45° Elliptical - Right Outlet**  
*(Our design accepts right or left mounting)*

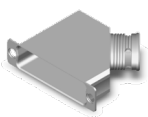
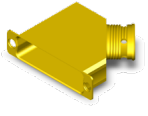


**DIMENSIONS & WEIGHT**

		Value					Weight (grams)
		A ±0.2	B ±0.15	C ±0.13	D ±0.38	E ±0.15	
Shell Size	E	30.68	12.50	24.99	12.70	9.50	10
	A	39.01	12.50	33.32	15.87	9.50	14
	B	52.91	12.50	47.04	19.05	9.50	20
	C	69.19	12.50	63.50	25.40	9.50	26
	D	66.80	15.30	61.11	22.22	12.30	33
	F	69.30	17.30	63.50	29.00	14.30	40



**DESCRIPTION & PART NUMBERS**

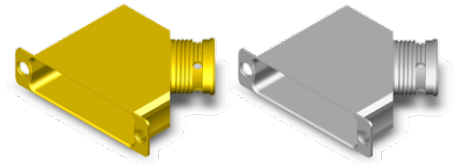
SHELL FINISH	SHELL SIZE	ESA/ESCC DESCRIPTION	C&K PART NUMBER
 Electroless Nickel	E	DE-BCKS-08-NMB-A174-FR022	C115366-2627B
	A	DA-BCKS-08-NMB-A174-FR022	C115366-2628B
	B	DB-BCKS-08-NMB-A174-FR022	C115366-2629B
	C	DC-BCKS-08-NMB-A174-FR022	C115366-2630B
	D	DD-BCKS-08-NMB-A174-FR022	C115366-2631B
	F	DF-BCKS-08-NMB-A174-FR022	C115366-2694B
 Gold	E	DE-BCKS-08-NMB-FR172-FR022	C115366-2627A
	A	DA-BCKS-08-NMB-FR172-FR022	C115366-2628A
	B	DB-BCKS-08-NMB-FR172-FR022	C115366-2629A
	C	DC-BCKS-08-NMB-FR172-FR022	C115366-2630A
	D	DD-BCKS-08-NMB-FR172-FR022	C115366-2631A
	F	DF-BCKS-08-NMB-FR172-FR022	C115366-2694A



Dimensions shown in: mm  
 Specifications and dimensions subject to change

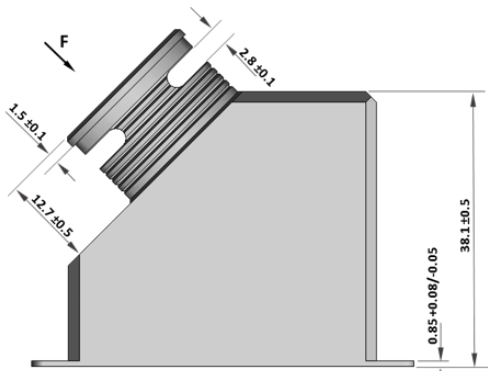


**D-Sub Lightweight Backshell**  
**45° Elliptical - Left Outlet**  
*(Our design accepts right or left mounting)*

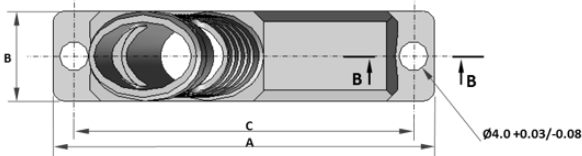


**DIMENSIONS & WEIGHT**

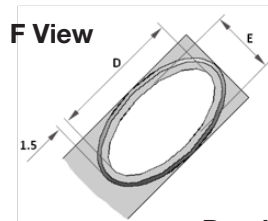
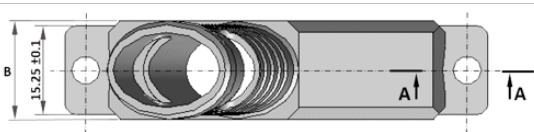
		Value					Weight (grams)
		A ±0.2	B ±0.15	C ±0.13	D ±0.38	E ±0.15	
Shell Size	E	30.68	12.50	24.99	12.70	9.50	10
	A	39.01	12.50	33.32	15.87	9.50	14
	B	52.91	12.50	47.04	19.05	9.50	20
	C	69.19	12.50	63.50	25.40	9.50	26
	D	66.80	15.30	61.11	22.22	12.30	33
	F	69.30	17.30	63.50	29.00	14.30	40



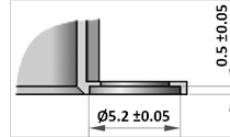
**Configuration Sizes E-A-B-C-D**



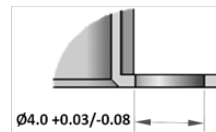
**Configuration Size F**



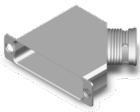
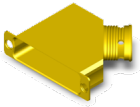
**Detail B-B**



**Detail A-A**



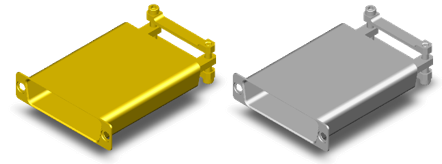
**DESCRIPTION & PART NUMBERS**

SHELL FINISH	SHELL SIZE	ESA/ESCC DESCRIPTION	C&K PART NUMBER
 Electroless Nickel	E	DE-BCKS-09-NMB-A174-FR022	C115366-2632B
	A	DA-BCKS-09-NMB-A174-FR022	C115366-2633B
	B	DB-BCKS-09-NMB-A174-FR022	C115366-2634B
	C	DC-BCKS-09-NMB-A174-FR022	C115366-2635B
	D	DD-BCKS-09-NMB-A174-FR022	C115366-2636B
	F	DF-BCKS-08-NMB-A174-FR022	C115366-2694B
 Gold	E	DE-BCKS-09-NMB-FR172-FR022	C115366-2632A
	A	DA-BCKS-09-NMB-FR172-FR022	C115366-2633A
	B	DB-BCKS-09-NMB-FR172-FR022	C115366-2634A
	C	DC-BCKS-09-NMB-FR172-FR022	C115366-2635A
	D	DD-BCKS-09-NMB-FR172-FR022	C115366-2636A
	F	DF-BCKS-08-NMB-FR172-FR022	C115366-2694A

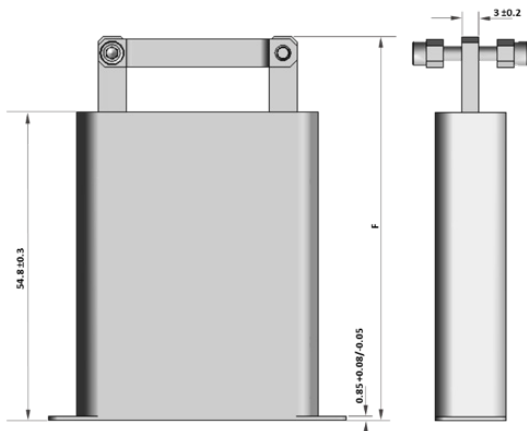
Dimensions shown in: mm  
 Specifications and dimensions subject to change



# D-Sub Lightweight Backshell Saddle Clamp Top Outlet



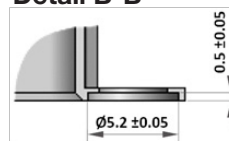
## DIMENSIONS & WEIGHT



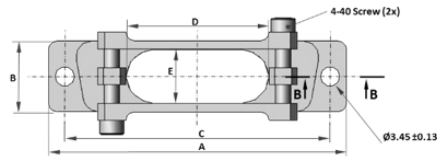
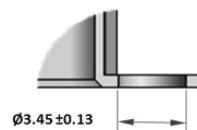
**Configuration Sizes E-A-B-C-D**

		Value						Weight (grams)
		A ±0.2	B ±0.15	C ±0.13	D ±0.30	E ±0.25	F ±0.5	
Shell Size	E	30.68	12.50	24.99	9.50	9.50	66.75	15.5
	A	39.01	12.50	33.32	18.10	9.50	66.75	19
	B	52.91	12.50	47.04	25.40	9.50	68.35	23
	C	69.19	12.50	63.50	34.90	9.50	68.35	29
	D	66.80	15.30	61.11	35.70	11.90	68.35	33
	F	69.30	17.30	63.50	47.00	13.90	68.35	37

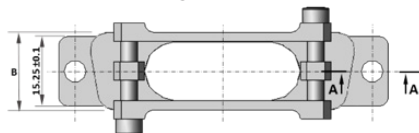
**Detail B-B**



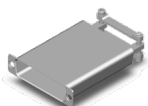
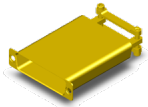
**Detail A-A**



**Configuration Size F**



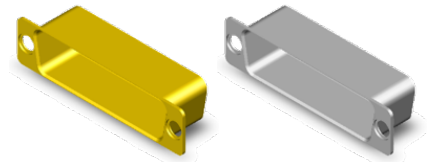
## DESCRIPTION & PART NUMBERS

SHELL FINISH	SHELL SIZE	ESA/ESCC DESCRIPTION	C&K PART NUMBER
 Electroless Nickel	E	DE-BCKS-01-NMB-A174-FR022	C115366-2586B
	A	DA-BCKS-01-NMB-A174-FR022	C115366-2587B
	B	DB-BCKS-01-NMB-A174-FR022	C115366-2588B
	C	DC-BCKS-01-NMB-A174-FR022	C115366-2589B
	D	DD-BCKS-01-NMB-A174-FR022	C115366-2590B
	F	DF-BCKS-01-NMB-A174-FR022	C115366-2687B
 Gold	E	DE-BCKS-01-NMB-FR172-FR022	C115366-2586A
	A	DA-BCKS-01-NMB-FR172-FR022	C115366-2587A
	B	DB-BCKS-01-NMB-FR172-FR022	C115366-2588A
	C	DC-BCKS-01-NMB-FR172-FR022	C115366-2589A
	D	DD-BCKS-01-NMB-FR172-FR022	C115366-2590A
	F	DF-BCKS-01-NMB-FR172-FR022	C115366-2687A



Dimensions shown in: mm  
Specifications and dimensions subject to change

# D-Sub Lightweight Backshell Closed - Extra Shorting Can

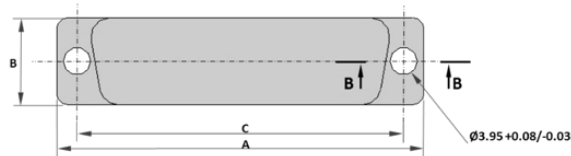


## DIMENSIONS & WEIGHT

		Value			Weight (grams)
		A ±0.2	B ±0.15	C ±0.13	
Shell Size	E	30.68	12.50	24.99	8
	A	39.01	12.50	33.32	10
	B	52.91	12.50	47.04	14
	C	69.19	12.50	63.50	20
	D	66.80	15.30	61.11	26
	F	69.30	17.30	63.50	30



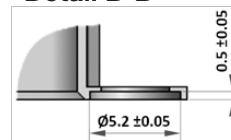
Configuration Sizes E-A-B-C-D



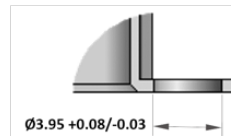
Configuration Size F




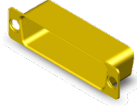
Detail B-B



Detail A-A

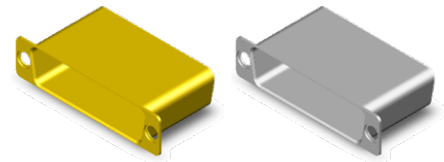


## DESCRIPTION & PART NUMBERS

SHELL FINISH	SHELL SIZE	ESA/ESCC DESCRIPTION	C&K PART NUMBER
 Electroless Nickel	E	DE-BCKS-10-NMB-A174-FR022	C115366-2637B
	A	DA-BCKS-10-NMB-A174-FR022	C115366-2638B
	B	DB-BCKS-10-NMB-A174-FR022	C115366-2639B
	C	DC-BCKS-10-NMB-A174-FR022	C115366-2640B
	D	DD-BCKS-10-NMB-A174-FR022	C115366-2641B
	F	DF-BCKS-10-NMB-A174-FR022	C115366-2695B
 Gold	E	DE-BCKS-10-NMB-FR172-FR022	C115366-2637A
	A	DA-BCKS-10-NMB-FR172-FR022	C115366-2638A
	B	DB-BCKS-10-NMB-FR172-FR022	C115366-2639A
	C	DC-BCKS-10-NMB-FR172-FR022	C115366-2640A
	D	DD-BCKS-10-NMB-FR172-FR022	C115366-2641A
	F	DF-BCKS-10-NMB-FR172-FR022	C115366-2695A

Dimensions shown in: mm  
Specifications and dimensions subject to change

# D-Sub Lightweight Backshell Closed - Shorting Can

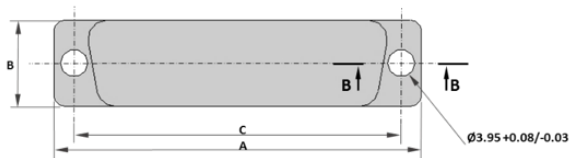


## DIMENSIONS & WEIGHT

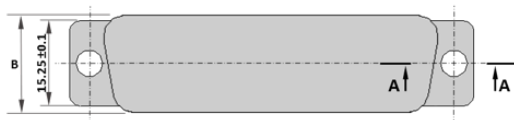
		Value			Weight (grams)
		A ±0.2	B ±0.15	C ±0.13	
Shell Size	E	30.68	12.50	24.99	8
	A	39.01	12.50	33.32	10
	B	52.91	12.50	47.04	14
	C	69.19	12.50	63.50	20
	D	66.80	15.30	61.11	26
	F	69.30	17.30	63.50	30



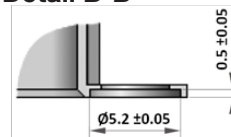
Configuration Sizes E-A-B-C-D



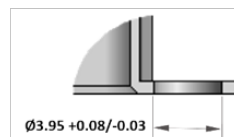
Configuration Size F



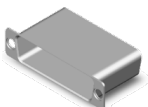
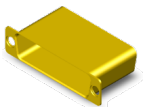
Detail B-B



Detail A-A



## DESCRIPTION & PART NUMBERS

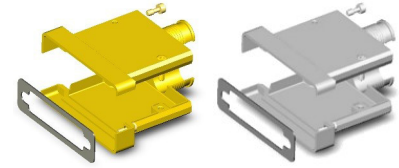
SHELL FINISH	SHELL SIZE	ESA/ESCC DESCRIPTION	C&K PART NUMBER
 Electroless Nickel	E	DE-BCKS-02-NMB-A174-FR022	C115366-2591B
	A	DA-BCKS-02-NMB-A174-FR022	C115366-2592B
	B	DB-BCKS-02-NMB-A174-FR022	C115366-2593B
	C	DC-BCKS-02-NMB-A174-FR022	C115366-2594B
	D	DD-BCKS-02-NMB-A174-FR022	C115366-2595B
	F	DF-BCKS-02-NMB-A174-FR022	C115366-2688B
 Gold	E	DE-BCKS-02-NMB-FR172-FR022	C115366-2591A
	A	DA-BCKS-02-NMB-FR172-FR022	C115366-2592A
	B	DB-BCKS-02-NMB-FR172-FR022	C115366-2593A
	C	DC-BCKS-02-NMB-FR172-FR022	C115366-2594A
	D	DD-BCKS-02-NMB-FR172-FR022	C115366-2595A
	F	DF-BCKS-02-NMB-FR172-FR022	C115366-2688A



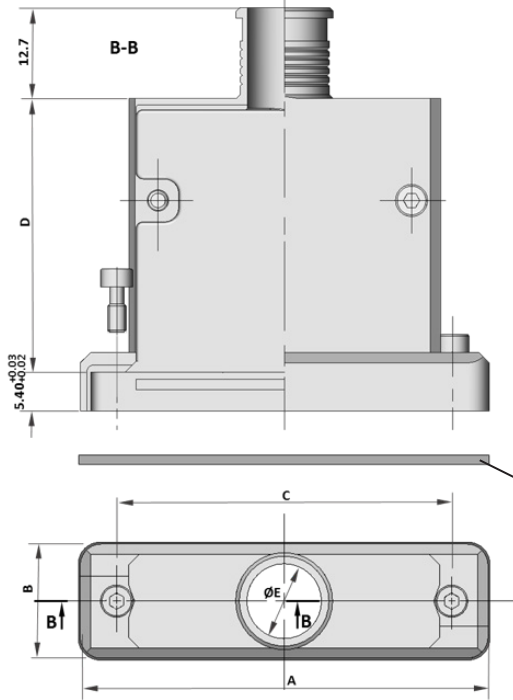
Dimensions shown in: mm  
Specifications and dimensions subject to change

## EMI BACKSHELL LIGHTWEIGHT

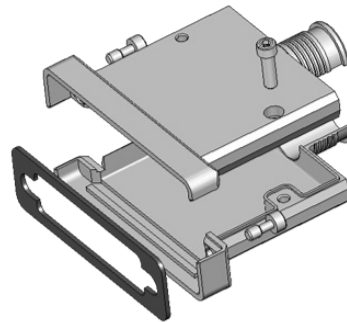
**D-Sub Lightweight Backshell  
Top Cylindrical Outlet - EMI Application  
Rear Mounting**



**DIMENSIONS & WEIGHT**



		Value					Weight (grams)
		A ±0.25	B ±0.25	C ±0.13	D ±0.30	E ±0.25	
Shell Size	E	35.03	15.98	24.99	32.70	6.73	21
	A	43.36	15.98	33.32	32.70	9.90	26
	B	57.25	15.98	47.04	38.30	10.54	30
	C	73.53	15.98	63.50	38.30	10.54	35
	D	71.14	18.75	61.11	38.30	13.33	40
	F	73.50	20.80	63.50	38.30	15.40	45



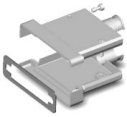
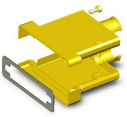
**EMI Gaskets (3x):**

- 1.40±0.1mm - to use with panel thickness within 0.77mm and 1.16mm
- 1.00±0.1mm - to use with panel thickness within 1.16mm and 1.55mm
- 0.60±0.1mm - to use with panel thickness within 1.55mm and 1.98mm

**Backshell delivered with:**

- 3 EMI gaskets to use according to panel thickness
- 2 Jackscrews 4-40 NC 2A Hexagonal Hole Head
- 2 screwlocks to fix the shells

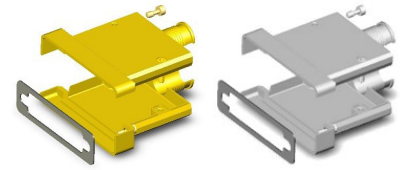
**DESCRIPTION & PART NUMBERS**

SHELL FINISH	SHELL SIZE	ESA/ESCC DESCRIPTION	C&K PART NUMBER
 Electroless Nickel	E	DE-BCKS-04-NMB-A174-FR022	C115366-2601B
	A	DA-BCKS-04-NMB-A174-FR022	C115366-2602B
	B	DB-BCKS-04-NMB-A174-FR022	C115366-2603B
	C	DC-BCKS-04-NMB-A174-FR022	C115366-2604B
	D	DD-BCKS-04-NMB-A174-FR022	C115366-2605B
	F	DF-BCKS-04-NMB-A174-FR022	C115366-2690B
 Gold	E	DE-BCKS-04-NMB-FR172-FR022	C115366-2601A
	A	DA-BCKS-04-NMB-FR172-FR022	C115366-2602A
	B	DB-BCKS-04-NMB-FR172-FR022	C115366-2603A
	C	DC-BCKS-04-NMB-FR172-FR022	C115366-2604A
	D	DD-BCKS-04-NMB-FR172-FR022	C115366-2605A
	F	DF-BCKS-04-NMB-FR172-FR022	C115366-2690A

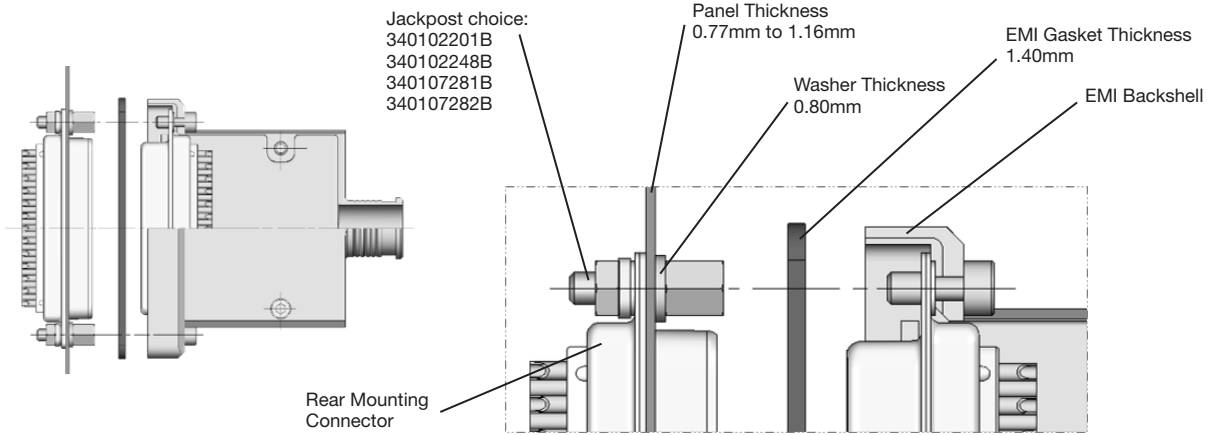


Dimensions shown in: mm  
Specifications and dimensions subject to change

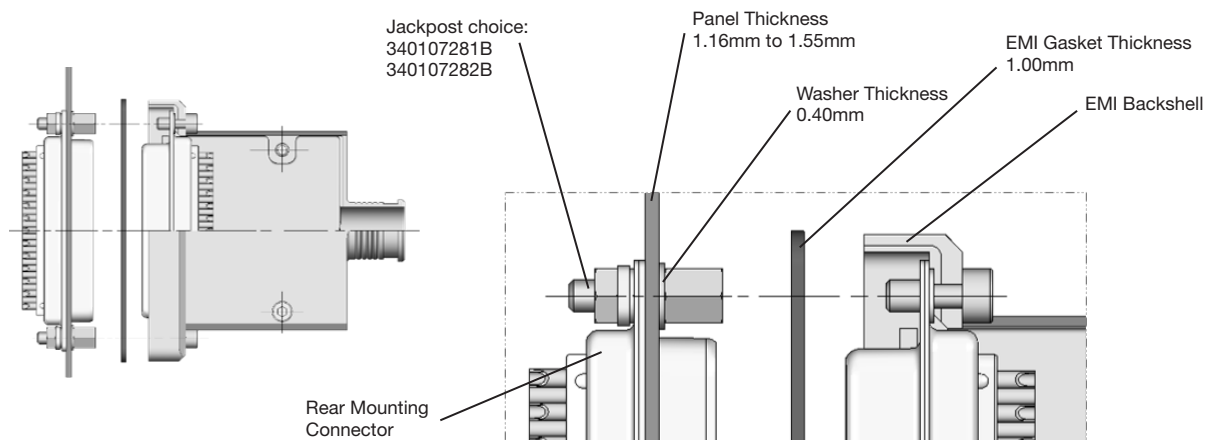
**D-Sub Lightweight Backshell**  
**Top Cylindrical Outlet - EMI Application**  
**Rear Mounting**



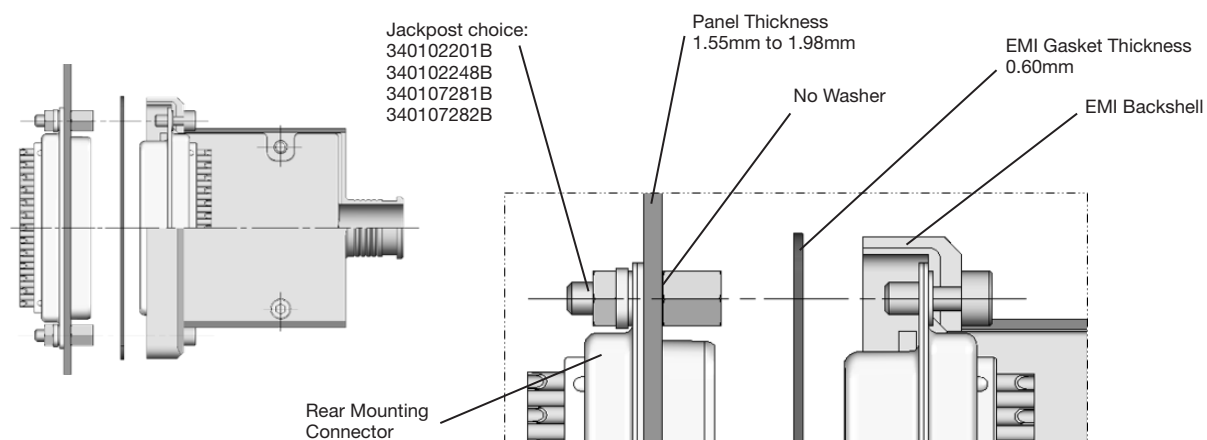
**MOUNTING RECOMMENDATION - Panel Thickness within 0.77mm and 1.16mm**



**MOUNTING RECOMMENDATION - Panel Thickness within 1.16mm and 1.55mm**

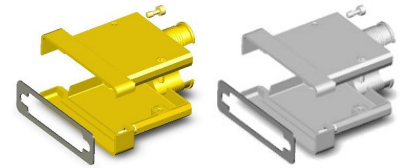


**MOUNTING RECOMMENDATION - Panel Thickness within 1.55mm and 1.98mm**

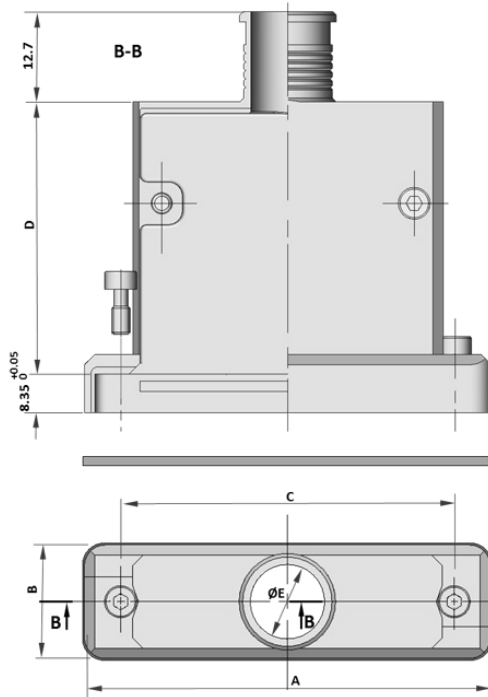


Dimensions shown in: mm  
 Specifications and dimensions subject to change

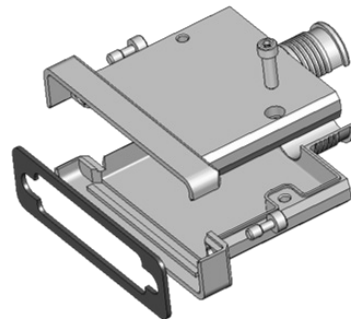
**D-Sub Lightweight Backshell  
Top Cylindrical Outlet - EMI Application  
Front Mounting**



**DIMENSIONS & WEIGHT**



		Value					Weight (grams)
		A ±0.25	B ±0.25	C ±0.13	D ±0.30	E ±0.25	
Shell Size	E	35.03	15.98	24.99	32.70	6.73	21
	A	43.36	15.98	33.32	32.70	9.90	26
	B	57.25	15.98	47.04	38.30	10.54	30
	C	73.53	15.98	63.50	38.30	10.54	35
	D	71.14	18.75	61.11	38.30	13.33	40
	F	73.50	20.80	63.50	38.30	15.40	45

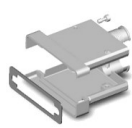
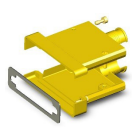


**EMI Gaskets:**  
0.60±0.1mm thickness

**Backshell delivered with:**

- 1 EMI gasket
- 2 Jackscrews 4-40 NC 2A Hexagonal Hole Head
- 2 screwlocks to fix the shells

**DESCRIPTION & PART NUMBERS**

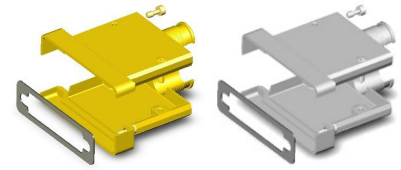
SHELL FINISH	SHELL SIZE	ESA/ESCC DESCRIPTION	C&K PART NUMBER
 Electroless Nickel	E	DE-BCKS-03-NMB-A174-FR022	C115366-2596B
	A	DA-BCKS-03-NMB-A174-FR022	C115366-2597B
	B	DB-BCKS-03-NMB-A174-FR022	C115366-2598B
	C	DC-BCKS-03-NMB-A174-FR022	C115366-2599B
	D	DD-BCKS-03-NMB-A174-FR022	C115366-2600B
	F	DF-BCKS-03-NMB-A174-FR022	C115366-2689B
 Gold	E	DE-BCKS-03-NMB-FR172-FR022	C115366-2596A
	A	DA-BCKS-03-NMB-FR172-FR022	C115366-2597A
	B	DB-BCKS-03-NMB-FR172-FR022	C115366-2598A
	C	DC-BCKS-03-NMB-FR172-FR022	C115366-2599A
	D	DD-BCKS-03-NMB-FR172-FR022	C115366-2600A
	F	DF-BCKS-03-NMB-FR172-FR022	C115366-2689A



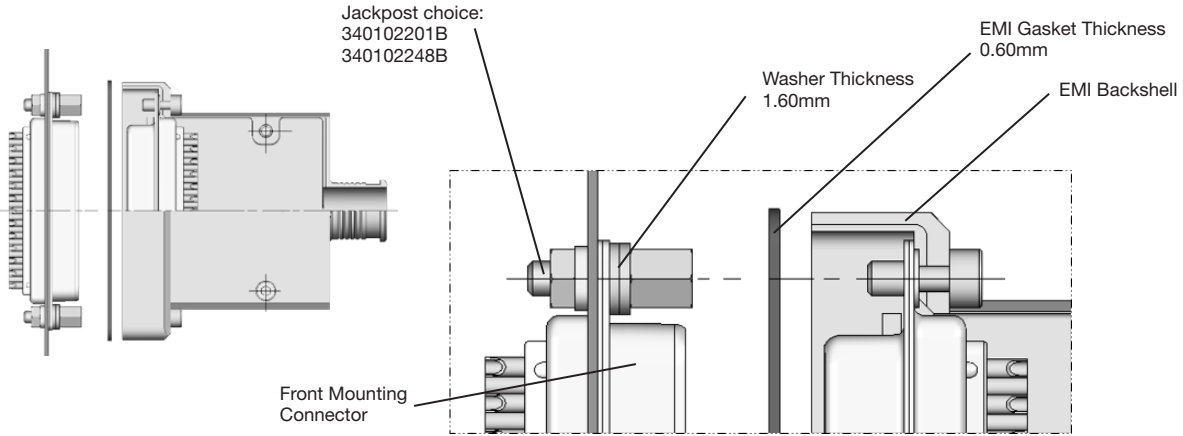
Dimensions shown in: mm  
Specifications and dimensions subject to change



**D-Sub Lightweight Backshell**  
**Top Cylindrical Outlet - EMI Application**  
**Front Mounting**



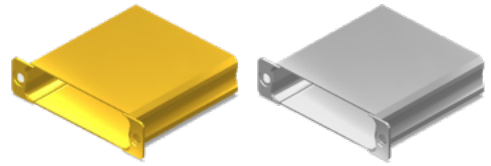
**MOUNTING RECOMMENDATION**



*Dimensions shown in: mm*  
*Specifications and dimensions subject to change*

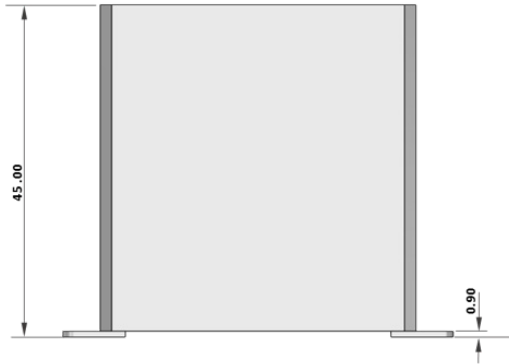
**BACKSHELL LIGHTWEIGHT  
HALORING COMPATIBLE  
+  
HALORING**

**D-Sub Lightweight Backshell**  
**Haloring Compatible**  
**Closed - Shorting Can**

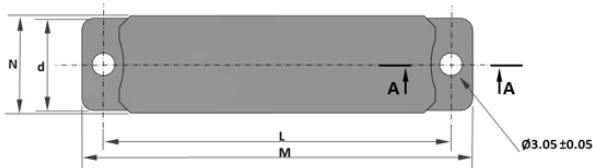
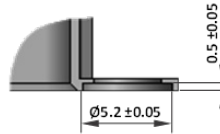


**DIMENSIONS & WEIGHT**

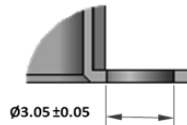
		Value				Weight (grams)
		M ±0.38	N ±0.2	d ±0.2	L ±0.13	
Shell Size	E	30.56	13.26	12.55	24.99	10.7
	A	38.89	13.26	12.55	33.32	13.5
	B	52.78	13.26	12.55	47.04	18
	C	69.04	13.26	12.55	63.50	23.6
	D	66.67	15.36	15.35	61.11	24.6
	F	69.32	18.06	17.35	63.50	26.2



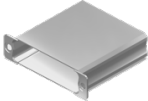
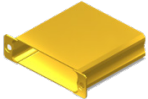
**Detail A-A Sizes E, A B, C and D**



**Detail A-A Size F**



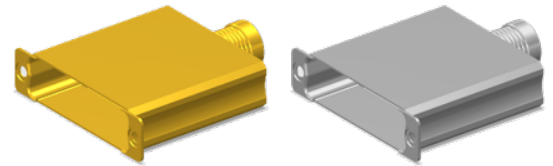
**DESCRIPTION & PART NUMBERS**

SHELL FINISH	SHELL SIZE	ESA/ESCC DESCRIPTION	C&K PART NUMBER
 Electroless Nickel	E	DE-BCKS-HAL-01-NMB-A174-FR022	C115366-2932B
	A	DA-BCKS-HAL-01-NMB-A174-FR022	C115366-2933B
	B	DB-BCKS-HAL-01-NMB-A174-FR022	C115366-2934B
	C	DC-BCKS-HAL-01-NMB-A174-FR022	C115366-2935B
	D	DD-BCKS-HAL-01-NMB-A174-FR022	C115366-2936B
	F	DF-BCKS-HAL-01-NMB-A174-FR022	C115366-2937B
 Gold	E	DE-BCKS-HAL-01-NMB-FR172-FR022	C115366-2932A
	A	DA-BCKS-HAL-01-NMB-FR172-FR022	C115366-2933A
	B	DB-BCKS-HAL-01-NMB-FR172-FR022	C115366-2934A
	C	DC-BCKS-HAL-01-NMB-FR172-FR022	C115366-2935A
	D	DD-BCKS-HAL-01-NMB-FR172-FR022	C115366-2936A
	F	DF-BCKS-HAL-01-NMB-FR172-FR022	C115366-2937A

Dimensions shown in: mm  
 Specifications and dimensions subject to change

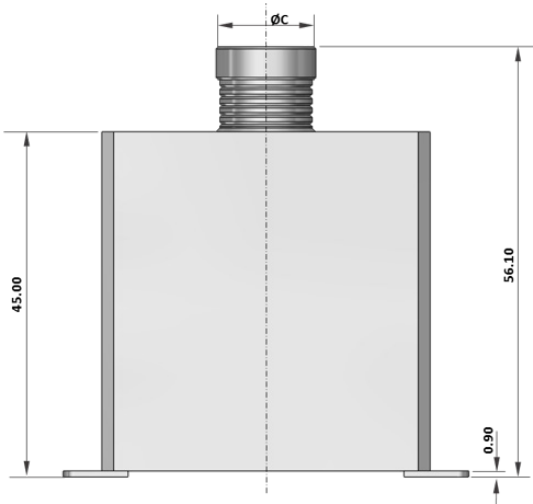


**D-Sub Lightweight Backshell**  
**Haloring Compatible**  
**Top Circular Outlet**

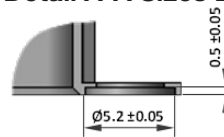


**DIMENSIONS & WEIGHT**

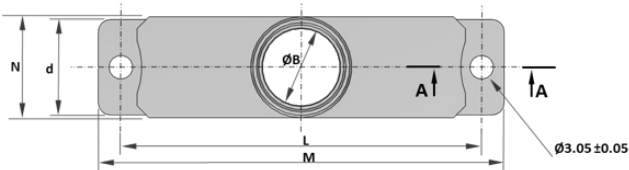
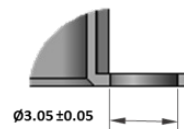
		Value						Weight (grams)
		M ±0.38	N ±0.2	d ±0.2	L ±0.13	ØB ±0.1	ØC ±0.1	
Shell Size	E	30.56	13.26	12.55	24.99	10.05	13.26	12
	A	38.89	13.26	12.55	33.32	10.05	13.26	14.8
	B	52.78	13.26	12.55	47.04	10.05	13.26	19.3
	C	69.04	13.26	12.55	63.50	10.05	13.26	24.9
	D	66.67	15.36	15.35	61.11	12.85	15.36	26.1
	F	69.32	18.06	17.35	63.50	14.85	18.06	27.8



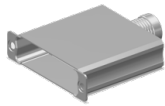
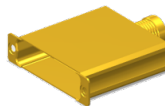
**Detail A-A Sizes E, A B, C and D**



**Detail A-A Size F**



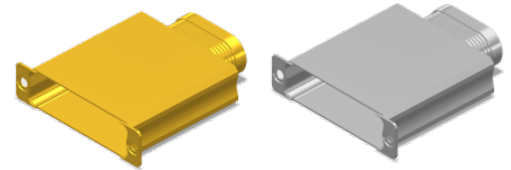
**DESCRIPTION & PART NUMBERS**

SHELL FINISH	SHELL SIZE	ESA/ESCC DESCRIPTION	C&K PART NUMBER
 Electroless Nickel	E	DE-BCKS-HAL-02-NMB-A174-FR022	C115366-2938B
	A	DA-BCKS-HAL-02-NMB-A174-FR022	C115366-2939B
	B	DB-BCKS-HAL-02-NMB-A174-FR022	C115366-2940B
	C	DC-BCKS-HAL-02-NMB-A174-FR022	C115366-2941B
	D	DD-BCKS-HAL-02-NMB-A174-FR022	C115366-2942B
	F	DF-BCKS-HAL-02-NMB-A174-FR022	C115366-2943B
 Gold	E	DE-BCKS-HAL-02-NMB-FR172-FR022	C115366-2938A
	A	DA-BCKS-HAL-02-NMB-FR172-FR022	C115366-2939A
	B	DB-BCKS-HAL-02-NMB-FR172-FR022	C115366-2940A
	C	DC-BCKS-HAL-02-NMB-FR172-FR022	C115366-2941A
	D	DD-BCKS-HAL-02-NMB-FR172-FR022	C115366-2942A
	F	DF-BCKS-HAL-02-NMB-FR172-FR022	C115366-2943A



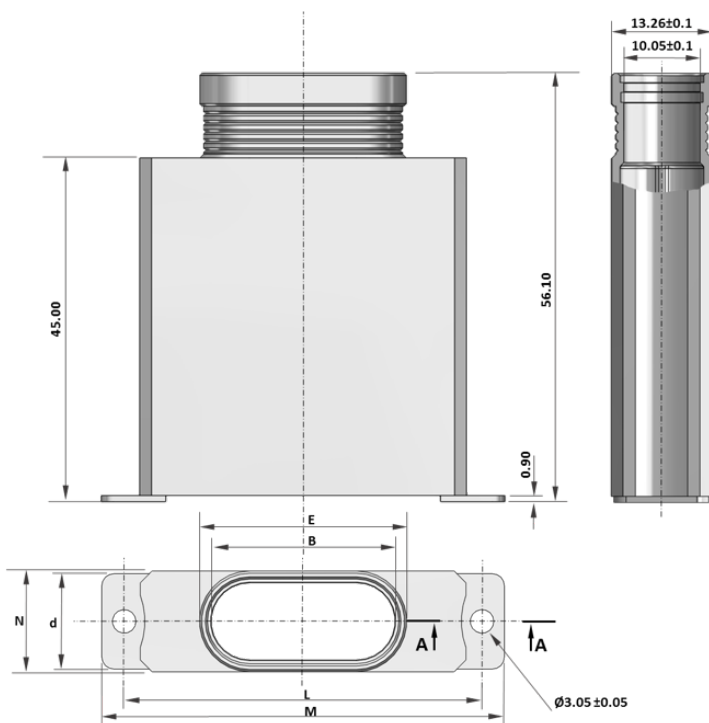
Dimensions shown in: mm  
 Specifications and dimensions subject to change

**D-Sub Lightweight Backshell**  
**Haloring Compatible**  
**Top Elliptical Outlet**

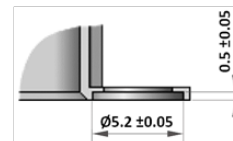


**DIMENSIONS & WEIGHT**

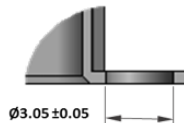
		Value						Weight (grams)
		M ±0.38	N ±0.2	d ±0.2	L ±0.13	B ±0.15	E ±0.15	
Shell Size	E	30.56	13.26	12.55	24.99	16.60	19.81	12.4
	A	38.89	13.26	12.55	33.32	24.10	27.31	15.5
	B	52.78	13.26	12.55	47.04	24.10	27.31	20
	C	69.04	13.26	12.55	63.50	24.10	27.31	25.6
	D	66.67	15.36	15.35	61.11	34.10	37.31	27
	F	69.32	18.06	17.35	63.50	37.60	40.81	28.8



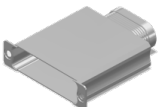
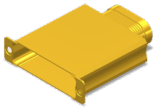
**Detail A-A Sizes E, A B, C and D**



**Detail A-A Size F**



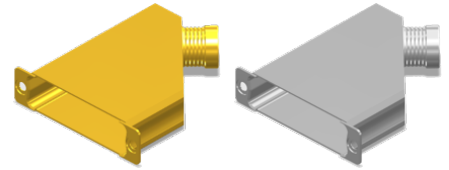
**DESCRIPTION & PART NUMBERS**

SHELL FINISH	SHELL SIZE	ESA/ESCC DESCRIPTION	C&K PART NUMBER
 Electroless Nickel	E	DE-BCKS-HAL-03-NMB-A174-FR022	C115366-2944B
	A	DA-BCKS-HAL-03-NMB-A174-FR022	C115366-2945B
	B	DB-BCKS-HAL-03-NMB-A174-FR022	C115366-2946B
	C	DC-BCKS-HAL-03-NMB-A174-FR022	C115366-2947B
	D	DD-BCKS-HAL-03-NMB-A174-FR022	C115366-2948B
	F	DF-BCKS-HAL-03-NMB-A174-FR022	C115366-2949B
 Gold	E	DE-BCKS-HAL-03-NMB-FR172-FR022	C115366-2944A
	A	DA-BCKS-HAL-03-NMB-FR172-FR022	C115366-2945A
	B	DB-BCKS-HAL-03-NMB-FR172-FR022	C115366-2946A
	C	DC-BCKS-HAL-03-NMB-FR172-FR022	C115366-2947A
	D	DD-BCKS-HAL-03-NMB-FR172-FR022	C115366-2948A
	F	DF-BCKS-HAL-03-NMB-FR172-FR022	C115366-2949A

Dimensions shown in: mm  
 Specifications and dimensions subject to change

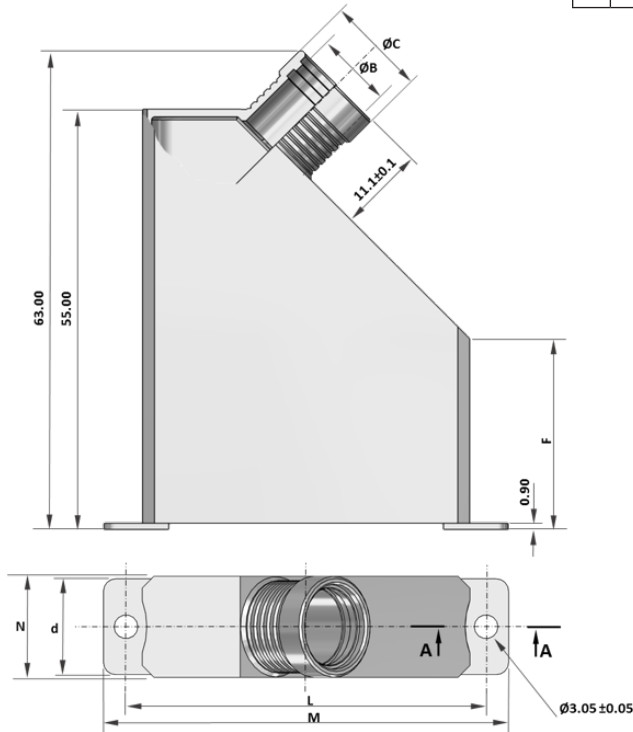


**D-Sub Lightweight Backshell**  
**Haloring Compatible**  
**45° Circular Outlet**

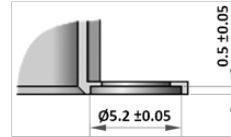


**DIMENSIONS & WEIGHT**

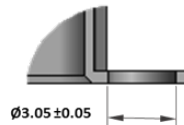
		Value							Weight (grams)
		M ±0.38	N ±0.2	d ±0.2	L ±0.13	ØB ±0.1	ØC ±0.1	F ±0.2	
Shell Size	E	30.56	13.26	12.55	24.99	10.05	13.26	40	13.3
	A	38.89	13.26	12.55	33.32	10.05	13.26	35	15.9
	B	52.78	13.26	12.55	47.04	10.05	13.26	25	19.2
	C	69.04	13.26	12.55	63.50	10.05	13.26	20	24.7
	D	66.67	15.36	15.35	61.11	12.85	15.36	20	25.7
	F	69.32	18.06	17.35	63.50	14.85	18.06	20	27.7



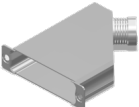
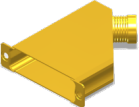
**Detail A-A Sizes E, A B, C and D**



**Detail A-A Size F**



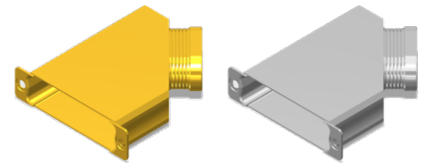
**DESCRIPTION & PART NUMBERS**

SHELL FINISH	SHELL SIZE	ESA/ESCC DESCRIPTION	C&K PART NUMBER
 Electroless Nickel	E	DE-BCKS-HAL-04-NMB-A174-FR022	C115366-2950B
	A	DA-BCKS-HAL-04-NMB-A174-FR022	C115366-2951B
	B	DB-BCKS-HAL-04-NMB-A174-FR022	C115366-2952B
	C	DC-BCKS-HAL-04-NMB-A174-FR022	C115366-2953B
	D	DD-BCKS-HAL-04-NMB-A174-FR022	C115366-2954B
	F	DF-BCKS-HAL-04-NMB-A174-FR022	C115366-2955B
 Gold	E	DE-BCKS-HAL-04-NMB-FR172-FR022	C115366-2950A
	A	DA-BCKS-HAL-04-NMB-FR172-FR022	C115366-2951A
	B	DB-BCKS-HAL-04-NMB-FR172-FR022	C115366-2952A
	C	DC-BCKS-HAL-04-NMB-FR172-FR022	C115366-2953A
	D	DD-BCKS-HAL-04-NMB-FR172-FR022	C115366-2954A
	F	DF-BCKS-HAL-04-NMB-FR172-FR022	C115366-2955A



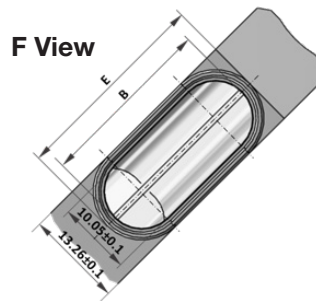
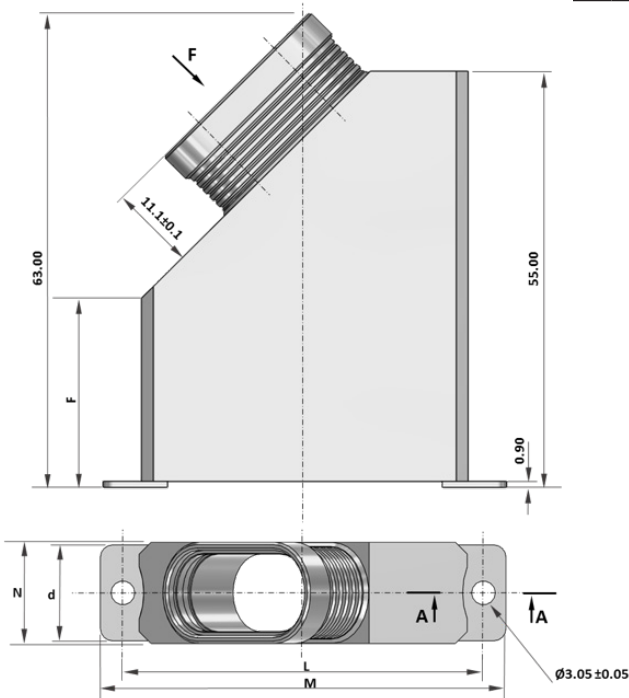
Dimensions shown in: mm  
 Specifications and dimensions subject to change

**D-Sub Lightweight Backshell**  
**Haloring Compatible**  
**45° Elliptical Outlet**

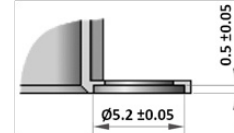


**DIMENSIONS & WEIGHT**

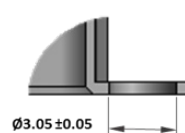
		Value							Weight (grams)
		M ±0.38	N ±0.2	d ±0.2	L ±0.13	B ±0.15	E ±0.15	F ±0.2	
Shell Size	E	30.56	13.26	12.55	24.99	16.60	19.81	40	13.6
	A	38.89	13.26	12.55	33.32	24.10	27.31	35	16.6
	B	52.78	13.26	12.55	47.04	24.10	27.31	25	19.9
	C	69.04	13.26	12.55	63.50	24.10	27.31	20	25.4
	D	66.67	15.36	15.35	61.11	34.10	37.31	20	26.7
	F	69.32	18.06	17.35	63.50	37.60	40.81	20	28.7



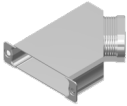
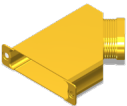
**Detail A-A Sizes E, A B, C and D**



**Detail A-A Size F**

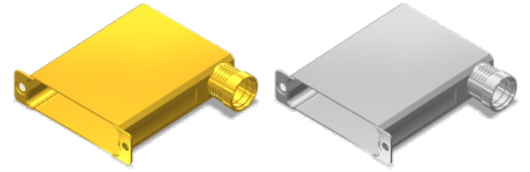


**DESCRIPTION & PART NUMBERS**

SHELL FINISH	SHELL SIZE	ESA/ESCC DESCRIPTION	C&K PART NUMBER
 Electroless Nickel	E	DE-BCKS-HAL-05-NMB-A174-FR022	C115366-2956B
	A	DA-BCKS-HAL-05-NMB-A174-FR022	C115366-2957B
	B	DB-BCKS-HAL-05-NMB-A174-FR022	C115366-2958B
	C	DC-BCKS-HAL-05-NMB-A174-FR022	C115366-2959B
	D	DD-BCKS-HAL-05-NMB-A174-FR022	C115366-2960B
	F	DF-BCKS-HAL-05-NMB-A174-FR022	C115366-2961B
 Gold	E	DE-BCKS-HAL-05-NMB-FR172-FR022	C115366-2956A
	A	DA-BCKS-HAL-05-NMB-FR172-FR022	C115366-2957A
	B	DB-BCKS-HAL-05-NMB-FR172-FR022	C115366-2958A
	C	DC-BCKS-HAL-05-NMB-FR172-FR022	C115366-2959A
	D	DD-BCKS-HAL-05-NMB-FR172-FR022	C115366-2960A
	F	DF-BCKS-HAL-05-NMB-FR172-FR022	C115366-2961A

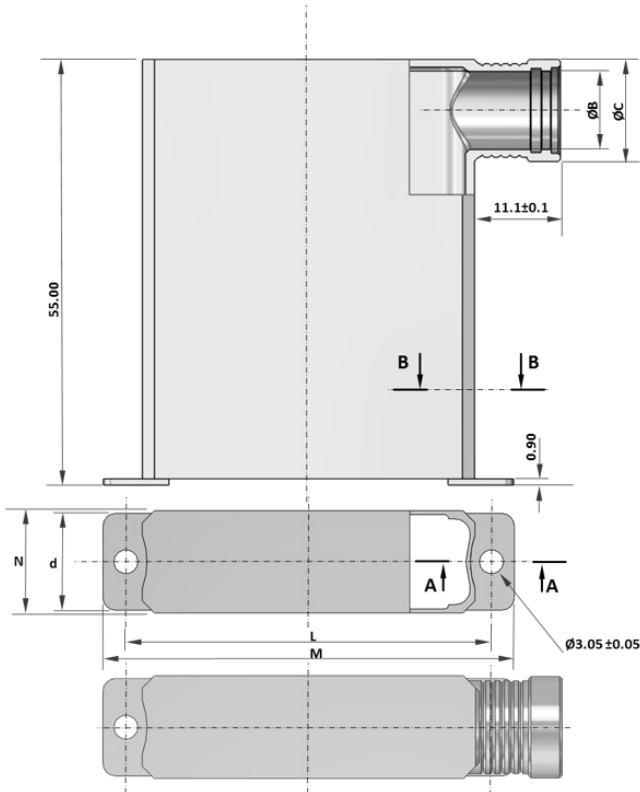
Dimensions shown in: mm  
 Specifications and dimensions subject to change

**D-Sub Lightweight Backshell**  
**Haloring Compatible**  
**90° Cylindrical Outlet**

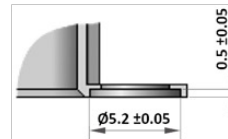


**DIMENSIONS & WEIGHT**

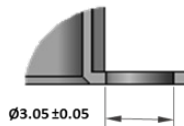
		Value						Weight (grams)
		M ±0.38	N ±0.2	d ±0.2	L ±0.13	ØB ±0.1	ØC ±0.1	
Shell Size	E	30.56	13.26	12.55	24.99	10.05	13.26	14.7
	A	38.89	13.26	12.55	33.32	10.05	13.26	18.1
	B	52.78	13.26	12.55	47.04	10.05	13.26	23.6
	C	69.04	13.26	12.55	63.50	10.05	13.26	30.5
	D	66.67	15.36	15.35	61.11	12.85	15.36	31.7
	F	69.32	18.06	17.35	63.50	14.85	18.06	33.8



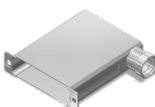
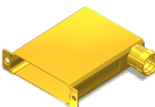
**Detail A-A Sizes E, A B, C and D**



**Detail A-A Size F**



**DESCRIPTION & PART NUMBERS**

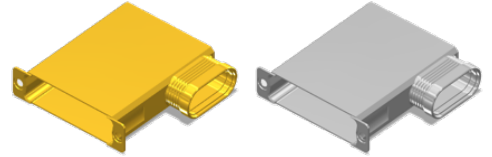
SHELL FINISH	SHELL SIZE	ESA/ESCC DESCRIPTION	C&K PART NUMBER
 Electroless Nickel	E	DE-BCKS-HAL-06-NMB-A174-FR022	C115366-2962B
	A	DA-BCKS-HAL-06-NMB-A174-FR022	C115366-2963B
	B	DB-BCKS-HAL-06-NMB-A174-FR022	C115366-2964B
	C	DC-BCKS-HAL-06-NMB-A174-FR022	C115366-2965B
	D	DD-BCKS-HAL-06-NMB-A174-FR022	C115366-2966B
	F	DF-BCKS-HAL-06-NMB-A174-FR022	C115366-2967B
 Gold	E	DE-BCKS-HAL-06-NMB-FR172-FR022	C115366-2962A
	A	DA-BCKS-HAL-06-NMB-FR172-FR022	C115366-2963A
	B	DB-BCKS-HAL-06-NMB-FR172-FR022	C115366-2964A
	C	DC-BCKS-HAL-06-NMB-FR172-FR022	C115366-2965A
	D	DD-BCKS-HAL-06-NMB-FR172-FR022	C115366-2966A
	F	DF-BCKS-HAL-06-NMB-FR172-FR022	C115366-2967A



Dimensions shown in: mm  
 Specifications and dimensions subject to change

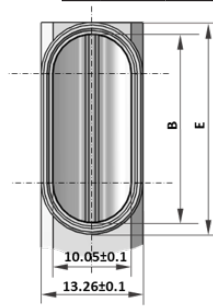
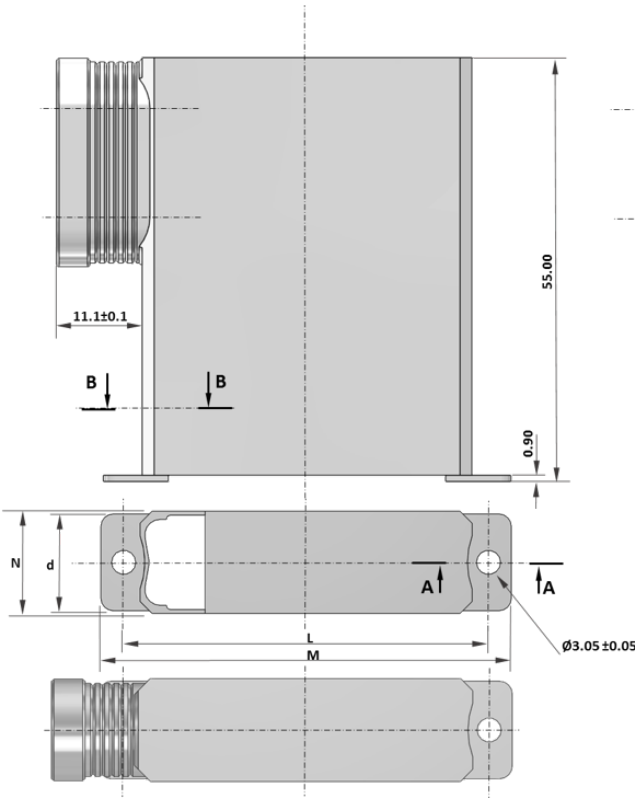


**D-Sub Lightweight Backshell**  
**Haloring Compatible**  
**90° Elliptical Outlet**

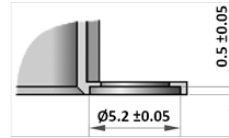


**DIMENSIONS & WEIGHT**

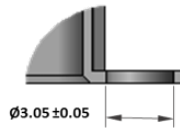
		Value						Weight (grams)
		M ±0.38	N ±0.2	d ±0.2	L ±0.13	B ±0.15	E ±0.15	
Shell Size	E	30.56	13.26	12.55	24.99	16.60	19.81	13.6
	A	38.89	13.26	12.55	33.32	24.10	27.31	16.6
	B	52.78	13.26	12.55	47.04	24.10	27.31	19.9
	C	69.04	13.26	12.55	63.50	24.10	27.31	25.4
	D	66.67	15.36	15.35	61.11	34.10	37.31	26.7
	F	69.32	18.06	17.35	63.50	37.60	40.81	28.7



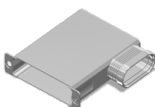
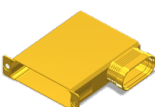
Detail A-A Sizes E, A B, C and D



Detail A-A Size F

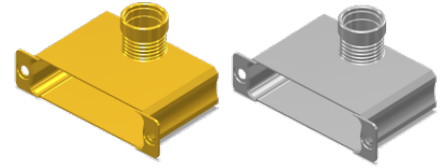


**DESCRIPTION & PART NUMBERS**

SHELL FINISH	SHELL SIZE	ESA/ESCC DESCRIPTION	C&K PART NUMBER
 Electroless Nickel	E	DE-BCKS-HAL-07-NMB-A174-FR022	C115366-2968B
	A	DA-BCKS-HAL-07-NMB-A174-FR022	C115366-2969B
	B	DB-BCKS-HAL-07-NMB-A174-FR022	C115366-2970B
	C	DC-BCKS-HAL-07-NMB-A174-FR022	C115366-2971B
	D	DD-BCKS-HAL-07-NMB-A174-FR022	C115366-2972B
	F	DF-BCKS-HAL-07-NMB-A174-FR022	C115366-2973B
 Gold	E	DE-BCKS-HAL-07-NMB-FR172-FR022	C115366-2968A
	A	DA-BCKS-HAL-07-NMB-FR172-FR022	C115366-2969A
	B	DB-BCKS-HAL-07-NMB-FR172-FR022	C115366-2970A
	C	DC-BCKS-HAL-07-NMB-FR172-FR022	C115366-2971A
	D	DD-BCKS-HAL-07-NMB-FR172-FR022	C115366-2972A
	F	DF-BCKS-HAL-07-NMB-FR172-FR022	C115366-2973A

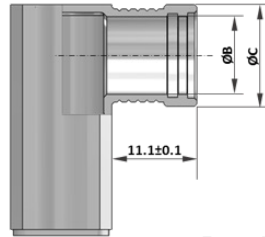
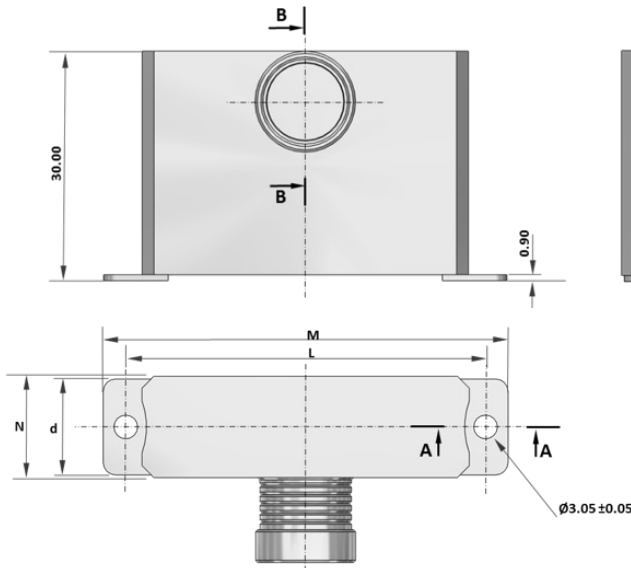
Dimensions shown in: mm  
 Specifications and dimensions subject to change

**D-Sub Lightweight Backshell**  
**Haloring Compatible**  
**90° Top Circular Outlet**

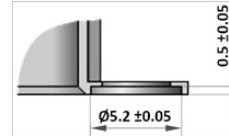


**DIMENSIONS & WEIGHT**

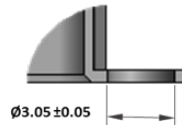
		Value						Weight (grams)
		M ±0.38	N ±0.2	d ±0.2	L ±0.13	ØB ±0.1	ØC ±0.1	
Shell Size	E	30.56	13.26	12.55	24.99	10.05	13.26	8.2
	A	38.89	13.26	12.55	33.32	10.05	13.26	10
	B	52.78	13.26	12.55	47.04	10.05	13.26	12.9
	C	69.04	13.26	12.55	63.50	10.05	13.26	16.6
	D	66.67	15.36	15.35	61.11	12.85	15.36	17.6
	F	69.32	18.06	17.35	63.50	14.85	18.06	18.9



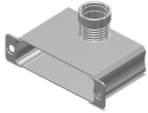
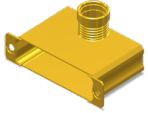
**Detail A-A Sizes E, A B, C and D**



**Detail A-A Size F**



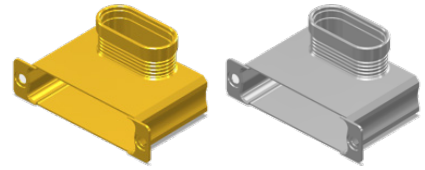
**DESCRIPTION & PART NUMBERS**

SHELL FINISH	SHELL SIZE	ESA/ESCC DESCRIPTION	C&K PART NUMBER
 Electroless Nickel	E	DE-BCKS-HAL-08-NMB-A174-FR022	C115366-2974B
	A	DA-BCKS-HAL-08-NMB-A174-FR022	C115366-2975B
	B	DB-BCKS-HAL-08-NMB-A174-FR022	C115366-2976B
	C	DC-BCKS-HAL-08-NMB-A174-FR022	C115366-2977B
	D	DD-BCKS-HAL-08-NMB-A174-FR022	C115366-2978B
	F	DF-BCKS-HAL-08-NMB-A174-FR022	C115366-2979B
 Gold	E	DE-BCKS-HAL-08-NMB-FR172-FR022	C115366-2974A
	A	DA-BCKS-HAL-08-NMB-FR172-FR022	C115366-2975A
	B	DB-BCKS-HAL-08-NMB-FR172-FR022	C115366-2976A
	C	DC-BCKS-HAL-08-NMB-FR172-FR022	C115366-2977A
	D	DD-BCKS-HAL-08-NMB-FR172-FR022	C115366-2978A
	F	DF-BCKS-HAL-08-NMB-FR172-FR022	C115366-2979A



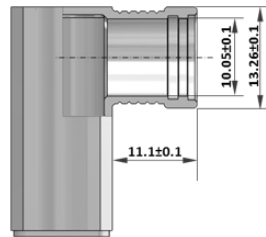
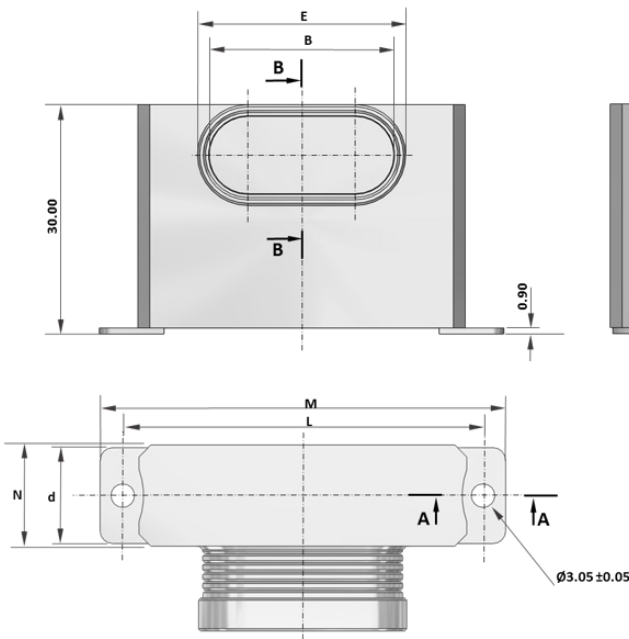
Dimensions shown in: mm  
 Specifications and dimensions subject to change

**D-Sub Lightweight Backshell**  
**Haloring Compatible**  
**90° Top Elliptical Outlet**

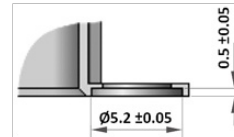


**DIMENSIONS & WEIGHT**

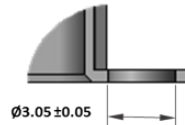
		Value						Weight (grams)
		M ±0.38	N ±0.2	d ±0.2	L ±0.13	B ±0.15	E ±0.15	
Shell Size	E	30.56	13.26	12.55	24.99	11.85	15.06	8.3
	A	38.89	13.26	12.55	33.32	16.60	19.81	10.3
	B	52.78	13.26	12.55	47.04	24.10	27.31	13.6
	C	69.04	13.26	12.55	63.50	24.10	27.31	17.3
	D	66.67	15.36	15.35	61.11	34.10	37.31	18.6
	F	69.32	18.06	17.35	63.50	34.10	37.31	20



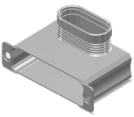
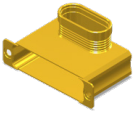
**Detail A-A Sizes E, A, B, C and D**



**Detail A-A Size F**

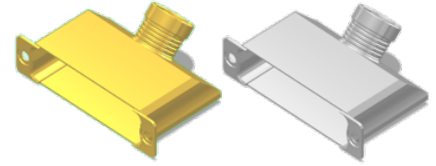


**DESCRIPTION & PART NUMBERS**

SHELL FINISH	SHELL SIZE	ESA/ESCC DESCRIPTION	C&K PART NUMBER
 Electroless Nickel	E	DE-BCKS-HAL-09-NMB-A174-FR022	C115366-2980B
	A	DA-BCKS-HAL-09-NMB-A174-FR022	C115366-2981B
	B	DB-BCKS-HAL-09-NMB-A174-FR022	C115366-2982B
	C	DC-BCKS-HAL-09-NMB-A174-FR022	C115366-2983B
	D	DD-BCKS-HAL-09-NMB-A174-FR022	C115366-2984B
	F	DF-BCKS-HAL-09-NMB-A174-FR022	C115366-2985B
 Gold	E	DE-BCKS-HAL-09-NMB-FR172-FR022	C115366-2980A
	A	DA-BCKS-HAL-09-NMB-FR172-FR022	C115366-2981A
	B	DB-BCKS-HAL-09-NMB-FR172-FR022	C115366-2982A
	C	DC-BCKS-HAL-09-NMB-FR172-FR022	C115366-2983A
	D	DD-BCKS-HAL-09-NMB-FR172-FR022	C115366-2984A
	F	DF-BCKS-HAL-09-NMB-FR172-FR022	C115366-2985A

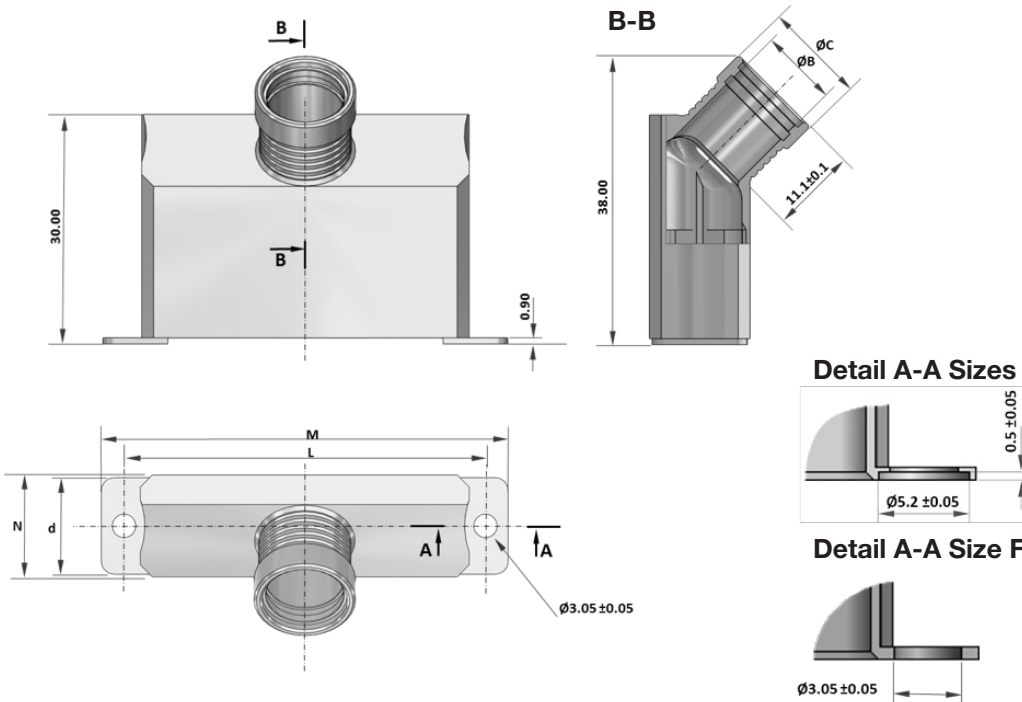
Dimensions shown in: mm  
 Specifications and dimensions subject to change

**D-Sub Lightweight Backshell**  
**Haloring Compatible**  
**45° Top Circular Outlet**

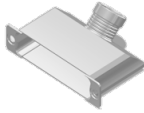
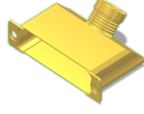


**DIMENSIONS & WEIGHT**

		Value						Weight (grams)
		M ±0.38	N ±0.2	d ±0.2	L ±0.13	ØB ±0.1	ØC ±0.1	
Shell Size	E	30.56	13.26	12.55	24.99	10.05	13.26	8
	A	38.89	13.26	12.55	33.32	10.05	13.26	9.9
	B	52.78	13.26	12.55	47.04	10.05	13.26	12.9
	C	69.04	13.26	12.55	63.50	10.05	13.26	16.8
	D	66.67	15.36	15.35	61.11	12.85	15.36	16.2
	F	69.32	18.06	17.35	63.50	14.85	18.06	17.6



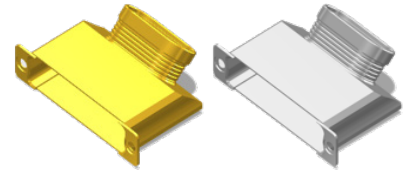
**DESCRIPTION & PART NUMBERS**

SHELL FINISH	SHELL SIZE	ESA/ESCC DESCRIPTION	C&K PART NUMBER
 Electroless Nickel	E	DE-BCKS-HAL-10-NMB-A174-FR022	C115366-2986B
	A	DA-BCKS-HAL-10-NMB-A174-FR022	C115366-2987B
	B	DB-BCKS-HAL-10-NMB-A174-FR022	C115366-2988B
	C	DC-BCKS-HAL-10-NMB-A174-FR022	C115366-2989B
	D	DD-BCKS-HAL-10-NMB-A174-FR022	C115366-2990B
	F	DF-BCKS-HAL-10-NMB-A174-FR022	C115366-2991B
 Gold	E	DE-BCKS-HAL-10-NMB-FR172-FR022	C115366-2986A
	A	DA-BCKS-HAL-10-NMB-FR172-FR022	C115366-2987A
	B	DB-BCKS-HAL-10-NMB-FR172-FR022	C115366-2988A
	C	DC-BCKS-HAL-10-NMB-FR172-FR022	C115366-2989A
	D	DD-BCKS-HAL-10-NMB-FR172-FR022	C115366-2990A
	F	DF-BCKS-HAL-10-NMB-FR172-FR022	C115366-2991A



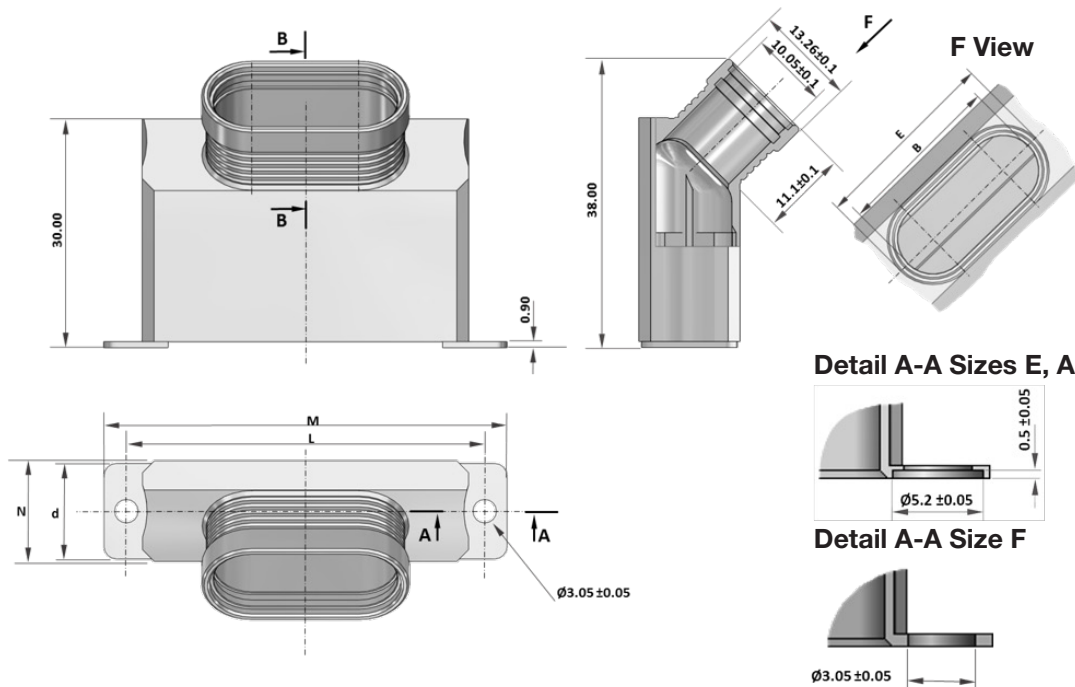
Dimensions shown in: mm  
 Specifications and dimensions subject to change

**D-Sub Lightweight Backshell**  
**Haloring Compatible**  
**45° Top Elliptical Outlet**

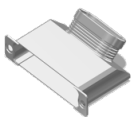
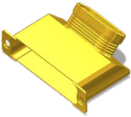


**DIMENSIONS & WEIGHT**

		Value						Weight (grams)
		M ±0.38	N ±0.2	d ±0.2	L ±0.13	B ±0.15	E ±0.15	
Shell Size	E	30.56	13.26	12.55	24.99	11.85	15.06	8.1
	A	38.89	13.26	12.55	33.32	16.60	19.81	10.2
	B	52.78	13.26	12.55	47.04	24.10	27.31	13.6
	C	69.04	13.26	12.55	63.50	24.10	27.31	17.4
	D	66.67	15.36	15.35	61.11	34.10	37.31	17.8
	F	69.32	18.06	17.35	63.50	34.10	37.31	18.7

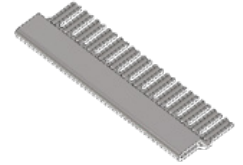


**DESCRIPTION & PART NUMBERS**

SHELL FINISH	SHELL SIZE	ESA/ESCC DESCRIPTION	C&K PART NUMBER
 Electroless Nickel	E	DE-BCKS-HAL-11-NMB-A174-FR022	C115366-2992B
	A	DA-BCKS-HAL-11-NMB-A174-FR022	C115366-2993B
	B	DB-BCKS-HAL-11-NMB-A174-FR022	C115366-2994B
	C	DC-BCKS-HAL-11-NMB-A174-FR022	C115366-2995B
	D	DD-BCKS-HAL-11-NMB-A174-FR022	C115366-2996B
	F	DF-BCKS-HAL-11-NMB-A174-FR022	C115366-2997B
 Gold	E	DE-BCKS-HAL-11-NMB-FR172-FR022	C115366-2992A
	A	DA-BCKS-HAL-11-NMB-FR172-FR022	C115366-2993A
	B	DB-BCKS-HAL-11-NMB-FR172-FR022	C115366-2994A
	C	DC-BCKS-HAL-11-NMB-FR172-FR022	C115366-2995A
	D	DD-BCKS-HAL-11-NMB-FR172-FR022	C115366-2996A
	F	DF-BCKS-HAL-11-NMB-FR172-FR022	C115366-2997A

Dimensions shown in: mm  
 Specifications and dimensions subject to change

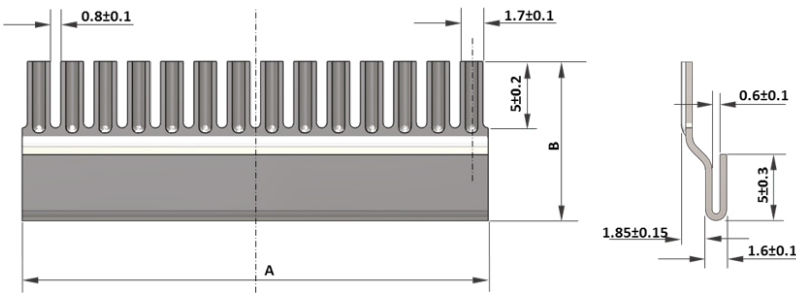
# D-Sub Haloring Compatible 45° Top Elliptical Outlet



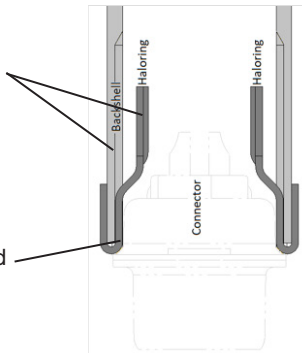
## DIMENSIONS & WEIGHT



		A ±0.2	B ±0.3	Number of Tines	Weight (grams)
Shell Size	E	15.00	12.00	6	1.3
	A	22.50	12.00	9	1.9
	B	35.00	12.00	14	2.9
	C & D	47.50	12.00	19	4
	F	52.50	15.00	21	5.2



The internal shape of the backshell and the profile of the haloring have been specifically studied in order to overcome the space constraints and ensure ease of use during wiring of the shielded wires



Haloring is held between the connector and the backshell

Note: All our Backshells haloring compatible are designed to be used with 1 or 2 halorings on the 2 large sides.

## DESCRIPTION & PART NUMBERS

	SHELL SIZE	ESA/ESCC DESCRIPTION	C&K PART NUMBER
	E	HALORING-DE-01-FR022	C115366-2927B
	A	HALORING-DA-01-FR022	C115366-2928B
	B	HALORING-DB-01-FR022	C115366-2929B
	C & D	HALORING-DC-DD-01-FR022	C115366-2930B
	F	HALORING-DF-01-FR022	C115366-2931B



*Dimensions shown in: mm  
Specifications and dimensions subject to change*

## ACCESSORIES

Universal Male Screwlock - Slotted Head	ESA/ESCC DESCRIPTION	C&K PART NUMBER
	D115440-0165-FR022	C115440-0165A
Universal Male Screwlock - Hexagonal Hole Head	ESA/ESCC DESCRIPTION	C&K PART NUMBER
	D115440-0167-FR022	C115440-0167A
Specific Female Screwlock for use with Backshell	ESA/ESCC DESCRIPTION	C&K PART NUMBER
	D115440-0201-FR022	C115440-0201

HDS FR022 D-Sub Lightweight Backshell - June 2020

Dimensions shown in: mm  
Specifications and dimensions subject to change