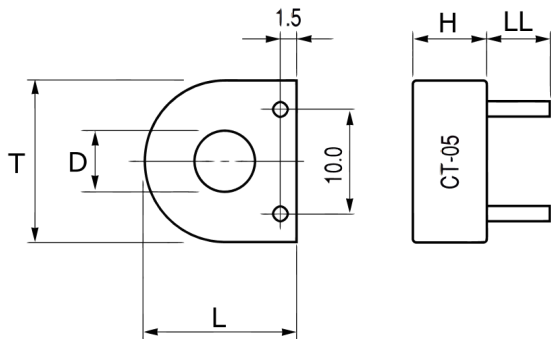


CT-05

Aliases (USEN0500000000)

KEMET, CT, Current, Round - Toroidal, AC, Overcurrent/Current Detection, High Sensitivity, High Performance



Click [here](#) for the 3D model.

Dimensions	
D	5.5mm NOM
L	17.5mm +/-0.4mm
H	10mm NOM
T	17.5mm +/-0.4mm
LL	10mm +/-0.1mm

Packaging Specifications	
Packaging	Tray
Packaging Quantity	1200
Typical Component Weight	4.4 g

General Information	
Series	CT
Type	Current
Style	Round - Toroidal
Description	Low Alternating Current Sensor
Features	Overcurrent/Current Detection, High Sensitivity, High Performance
Lead	Wire Leads
RoHS	Yes
REACH	Yes
Notes	0.6 mm Diamter Pin Connectors

Specifications	
Temperature Range	-20/+80°C
Miscellaneous	Materials = Phenolic Resin Case, Epoxy-Filled. 500 turns.

Statements of suitability for certain applications are based on our knowledge of typical operating conditions for such applications, but are not intended to constitute - and we specifically disclaim - any warranty concerning suitability for a specific customer application or use. This Information is intended for use only by customers who have the requisite experience and capability to determine the correct products for their application. Any technical advice inferred from this Information or otherwise provided by us with reference to the use of our products is given gratis, and we assume no obligation or liability for the advice given or results obtained.