

# Part no. HT-KJNE-TOOL

Crimping Tool for KJNE Series Keystone Jack with Replacement Blade



## PRODUCT DESCRIPTION

We have developed our own 110 punch-down tool with optimized performance for our 110 KJNE Keystone jacks. The Rapid Termination Tool cuts and punches all 8 wires with one squeeze. Compatible for CAT 5e, CAT 6 and CAT 6A KJNE jacks this tool can help significantly reduce installation time. Included with the tool comes a replacement blade which can be placed inside Hyperlines KJE Tool as well.

## DESIGN FEATURES

- Handle with lock closed position
- Durable stainless steel frame
- Compactness and reliability, for termination modules KJNE can also use an old tool HT-KJE-TOOL (in Part Number «KJE» instead of «KJNE»), if you set it in a new box-cutter HT-KJNE-BLD

## MATERIALS

- Frame: stainless steel
- Housing: polycarbonate (PC GF)
- Handles: polypropylene
- Cutter: cobalt steel (SK5), HRC 50-60 HRC

## DETAILS AND CONSTRUCTION

- Handles with locking mechanism for comfortable operation and easy storage
- Durable steel frame and ergonomically designed handles
- Lightweight and rugged

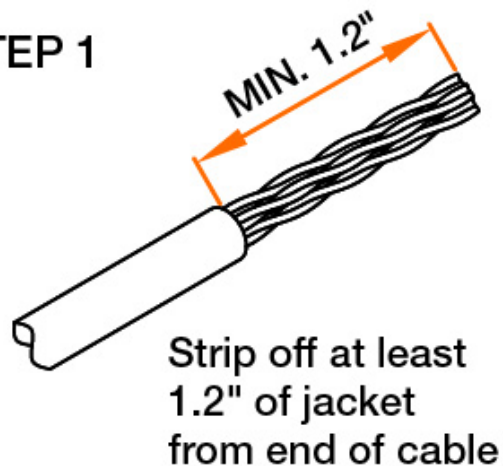
## ORDERING

Part Number	Product Description
HT-KJNE-TOOL	Hyperline KJNE Tool for 110 punchdown
HT-KJNE-BLD	Hyperline 110 blade for KJNE series punchdown tool

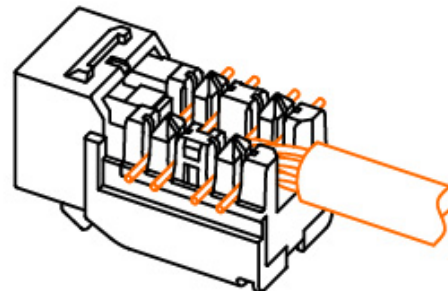


# Termination

## STEP 1

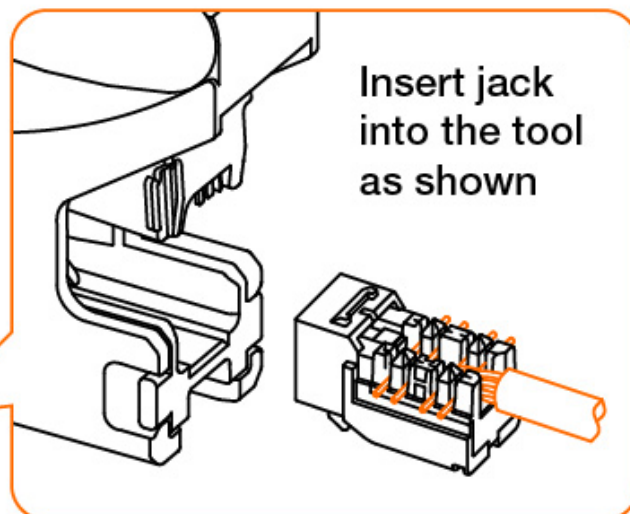
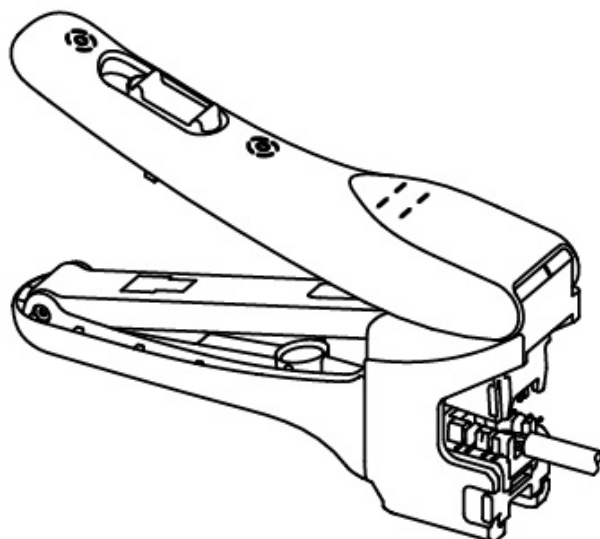


## STEP 2

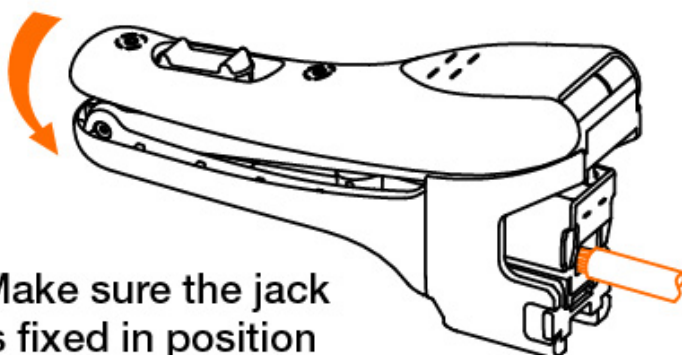


Press the wires through the projecting portion of terminals until fixed

## STEP 3

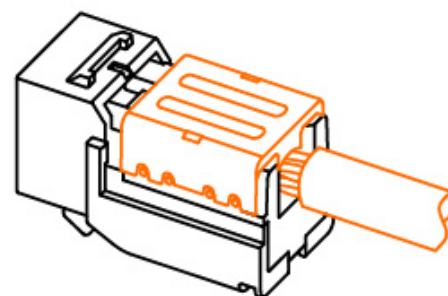


## STEP 4



Make sure the jack is fixed in position and press tool to terminate jack and cut extra wires

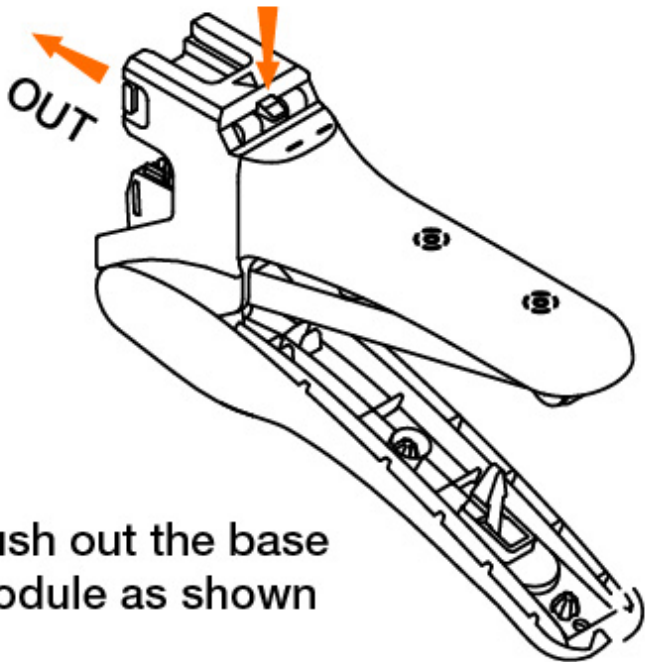
## STEP 5



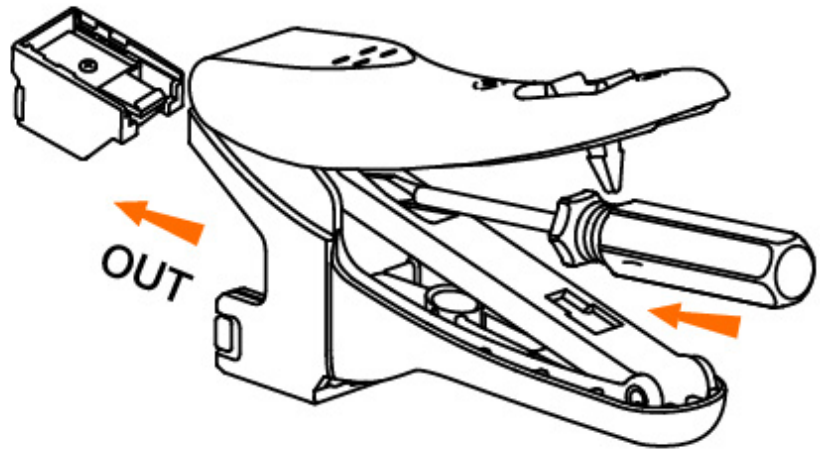
Press to make sure it is fully seated



# Cutting Module Assembly

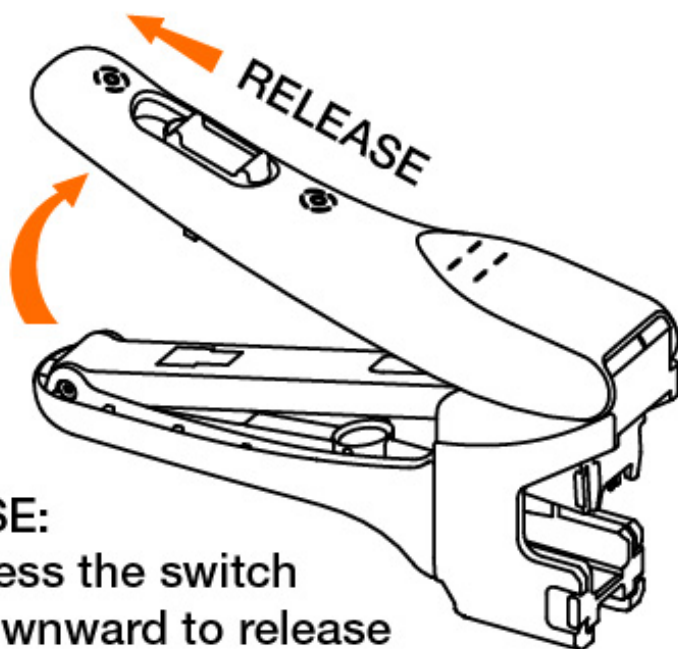


Push out the base module as shown

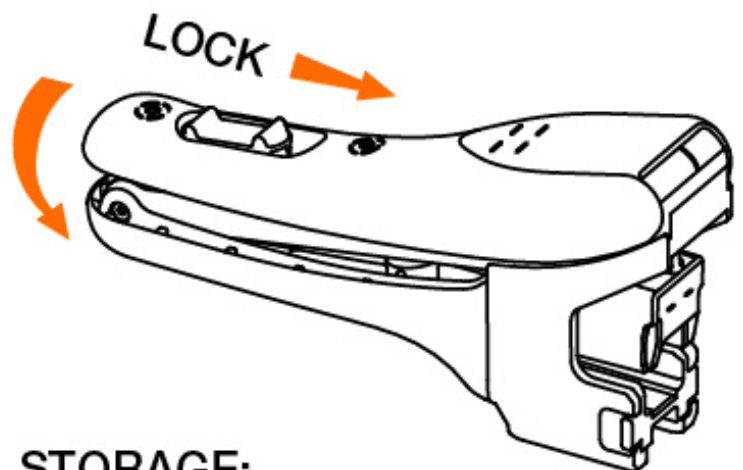


Use the slotted screwdriver to push out the cutting module as shown

# Handle Lock



**USE:**  
Press the switch downward to release the handle



**STORAGE:**  
Press the switch upward to lock the handle

