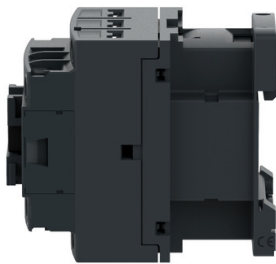


# Product data sheet

Specifications



IEC contactor, Easy TeSys  
DPE, nonreversing, 18A, 3P, 7.5HP  
at 480V AC, 24V 50/60Hz coil

DPE18B7

## Main

Range	Easy TeSys
Product name	Easy TeSys DPE
product or component type	Contactors
Device short name	DPE
contactor application	Resistive load Motor control
Utilisation category	AC-4 AC-1 AC-3
poles description	3P
Pole contact composition	3 NO
Auxiliary contact composition	1 NO
[Ie] rated operational current	25 A (at <140 °F (60 °C)) at <= 440 V AC AC-1 for power circuit 18 A (at <140 °F (60 °C)) at <= 440 V AC AC-3 for power circuit
[Uc] control circuit voltage	24 V AC 50/60 Hz
Motor power kW	4 kW 220...230 V AC 50/60 Hz 7.5 kW 380...400 V AC 50/60 Hz 9 kW 415 V AC 50/60 Hz 9 kW 440 V AC 50/60 Hz 10 kW 500 V AC 50/60 Hz 10 kW 660...690 V AC 50/60 Hz
Motor power hp	0.5 hp at 115 V AC 50/60 Hz for 1 phase motors 2 hp at 230/240 V AC 50/60 Hz for 1 phase motors 3 hp at 200/208 V AC 50/60 Hz for 3 phases motors 3 hp at 230/240 V AC 50/60 Hz for 3 phases motors 7.5 hp at 460/480 V AC 50/60 Hz for 3 phases motors 10 hp at 575/600 V AC 50/60 Hz for 3 phases motors

## Complementary

Maximum Operational Voltage	Power circuit <= 690 V AC 25...400 Hz Power circuit <= 300 V DC
[Ith] conventional free air thermal current	25 A (at 140 °F (60 °C)) for power circuit 10 A (at 140 °F (60 °C)) for signalling circuit
Irms rated making capacity	250 A at 440 V for power circuit conforming to IEC 60947 140 A AC for signalling circuit conforming to IEC 60947-5-1 250 A DC for signalling circuit conforming to IEC 60947-5-1
Rated breaking capacity	250 A at 440 V for power circuit conforming to IEC 60947
Associated fuse rating	10 A gG for signalling circuit conforming to IEC 60947-5-1 40 A gG at <= 690 V coordination type 1 for power circuit 25 A gG at <= 690 V coordination type 2 for power circuit
Average impedance	2.5 mOhm - Ith 25 A 50 Hz for power circuit

Disclaimer: This documentation is not intended as a substitute for and is not to be used for determining suitability or reliability of these products for specific user applications

Power dissipation per pole	0.36 W AC-3 1.56 W AC-1
Electrical durability	1 Mcycles 18 A AC-3 <= 440 V 0.6 Mcycles 25 A AC-1 <= 440 V
Safety reliability level	B10d = 1369863 cycles contactor with nominal load EN/ISO 13849-1 B10d = 20000000 cycles contactor with mechanical load EN/ISO 13849-1
Control circuit type	AC 50/60 Hz
Coil technology	Without built-in suppressor module
Control circuit voltage limits	Drop-out: 0.3...0.6 Uc at 50/60 Hz (at <158 °F (70 °C)) Operational: 0.8...1.1 Uc at 50 Hz (at <140 °F (60 °C)) Operational: 0.85...1.1 Uc at 60 Hz (at <140 °F (60 °C)) Operational: 1...1.1 Uc at 50/60 Hz (at <158 °F (70 °C))
Inrush power in VA	70 VA 60 Hz cos phi 0.75 (at 68 °F (20 °C)) 70 VA 50 Hz cos phi 0.75 (at 68 °F (20 °C))
Hold-in power consumption in VA	7.5 VA 60 Hz cos phi 0.3 (at 68 °F (20 °C)) 7 VA 50 Hz cos phi 0.3 (at 68 °F (20 °C))
Heat dissipation	2...3 W 50/60 Hz
Operating time	12...22 ms closing 4...19 ms opening
Mechanical durability	10 Mcycles
Maximum operating rate	3600 cyc/h 140 °F (60 °C)
Auxiliary contacts type	Mechanically linked 1 NO IEC 60947-5-1
Minimum switching current	5 mA for signalling circuit
Minimum switching voltage	17 V for signalling circuit
Insulation resistance	> 10 MOhm for signalling circuit
Non-overlap time	1.5 ms on de-energisation between NC and NO contact 1.5 ms on energisation between NC and NO contact
Signalling circuit frequency	25...400 Hz
Connections - terminals	Power circuit: screw clamp terminals 1 0.002...0.006 in <sup>2</sup> (1...4 mm <sup>2</sup> ) - cable stiffness: flexible without cable end Power circuit: screw clamp terminals 2 0.002...0.006 in <sup>2</sup> (1...4 mm <sup>2</sup> ) - cable stiffness: flexible without cable end Power circuit: screw clamp terminals 1 0.002...0.006 in <sup>2</sup> (1...4 mm <sup>2</sup> ) - cable stiffness: flexible with cable end Power circuit: screw clamp terminals 2 0.002...0.004 in <sup>2</sup> (1...2.5 mm <sup>2</sup> ) - cable stiffness: flexible with cable end Power circuit: screw clamp terminals 1 0.002...0.006 in <sup>2</sup> (1...4 mm <sup>2</sup> ) - cable stiffness: solid without cable end Power circuit: screw clamp terminals 2 0.002...0.006 in <sup>2</sup> (1...4 mm <sup>2</sup> ) - cable stiffness: solid without cable end Control circuit: screw clamp terminals 1 0.002...0.006 in <sup>2</sup> (1...4 mm <sup>2</sup> ) - cable stiffness: flexible without cable end Control circuit: screw clamp terminals 2 0.002...0.006 in <sup>2</sup> (1...4 mm <sup>2</sup> ) - cable stiffness: flexible without cable end Control circuit: screw clamp terminals 1 0.002...0.006 in <sup>2</sup> (1...4 mm <sup>2</sup> ) - cable stiffness: flexible with cable end Control circuit: screw clamp terminals 2 0.002...0.004 in <sup>2</sup> (1...2.5 mm <sup>2</sup> ) - cable stiffness: flexible with cable end Control circuit: screw clamp terminals 1 0.002...0.006 in <sup>2</sup> (1...4 mm <sup>2</sup> ) - cable stiffness: solid without cable end Control circuit: screw clamp terminals 2 0.002...0.006 in <sup>2</sup> (1...4 mm <sup>2</sup> ) - cable stiffness: solid without cable end
Tightening torque	Power circuit 15.05 lbf.in (1.7 N.m) screw clamp terminals flat Ø 6 mm Power circuit 15.05 lbf.in (1.7 N.m) screw clamp terminals Philips No 2 Control circuit 15.05 lbf.in (1.7 N.m) screw clamp terminals flat Ø 6 mm Control circuit 15.05 lbf.in (1.7 N.m) screw clamp terminals Philips No 2
mounting support	Rail Plate
Height	3.03 in (77 mm)

Width	1.8 in (45 mm)
Depth	3.4 in (86 mm)
net weight	0.717 lb(US) (0.325 kg)

## Environment

[Ui] rated insulation voltage	Power circuit 690 V IEC 60947-4-1 Power circuit 600 V CSA Power circuit 600 V UL Signalling circuit 690 V IEC 60947-1 Signalling circuit 600 V CSA Signalling circuit 600 V UL
Overvoltage category	III
Pollution degree	3
[Uimp] rated impulse withstand voltage	6 kV IEC 60947
Standards	CSA C22.2 No 14 EN 60947-4-1 EN 60947-5-1 IEC 60947-4-1 IEC 60947-5-1 UL 60947-4-1
Product certifications	UL CSA
IP degree of protection	IP20 front face IEC 60529
Ambient air temperature for storage	-76...176 °F (-60...80 °C)
Ambient air temperature for operation	-40...140 °F (-40...60 °C)
Operating altitude	0...2000 m
Fire resistance	1562 °F (850 °C) IEC 60695-2-1
Mechanical robustness	Vibrations contactor open 2 Gn, 5...300 Hz) Vibrations contactor closed 4 Gn, 5...300 Hz) Shocks contactor open 10 Gn for 11 ms) Shocks contactor closed 15 Gn for 11 ms)

## Packing Units

Unit Type of Package 1	PCE
Number of Units in Package 1	1
Package 1 Height	2.1 in (5.4 cm)
Package 1 Width	3.3 in (8.3 cm)
Package 1 Length	3.8 in (9.6 cm)
Package 1 Weight	11.81 oz (334.8 g)
Unit Type of Package 2	S02
Number of Units in Package 2	16
Package 2 Height	5.9 in (15.0 cm)
Package 2 Width	11.8 in (30.0 cm)
Package 2 Length	15.7 in (40.0 cm)
Package 2 Weight	12.91 lb(US) (5.856 kg)

Sustainability



**Green Premium™ label** is Schneider Electric’s commitment to delivering products with best-in-class environmental performance. Green Premium promises compliance with the latest regulations, transparency on environmental impacts, as well as circular and low-CO<sub>2</sub> products.

**Guide to assessing product sustainability** is a white paper that clarifies global eco-label standards and how to interpret environmental declarations.

[Learn more about Green Premium >](#)

[Guide to assess a product’s sustainability >](#)



Transparency   RoHS/REACH

Well-being performance

✓	Reach Free Of Svhc	
✓	Toxic Heavy Metal Free	
✓	Mercury Free	
✓	Rohs Exemption Information	Yes
✓	Pvc Free	

Certifications & Standards

Reach Regulation	<a href="#">REACH Declaration</a>
Eu Rohs Directive	Compliant <a href="#">EU RoHS Declaration</a>
China Rohs Regulation	<a href="#">China RoHS declaration</a> Pro-active China RoHS declaration (out of China RoHS legal scope)
Environmental Disclosure	<a href="#">Product Environmental Profile</a>
Weee	The product must be disposed on European Union markets following specific waste collection and never end up in rubbish bins
Circularity Profile	<a href="#">End of Life Information</a>