



Post Office Box 97
 Benton Harbor, Michigan
 Ph: 269/926-6171
 Fax: 269/925-8288

PART NUMBER: STD118
 REVISION: H

Product Specifications

Model Number	MAX. PRESS.		MAX. SPEED	HP	kW	Net Wt.	
	bar.	PSI				lbs.	kg
2AM-NCC-43A	7.0	100	3,000 RPM	.95	0.70	7.5	3.4
2AM-NCC-43B	7.0	100	3,000 RPM	.95	0.70	7.5	3.4

SOUND LEVEL 76 dba MAX.

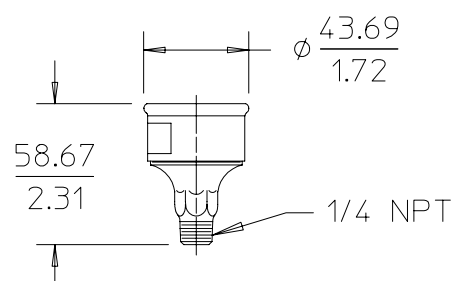
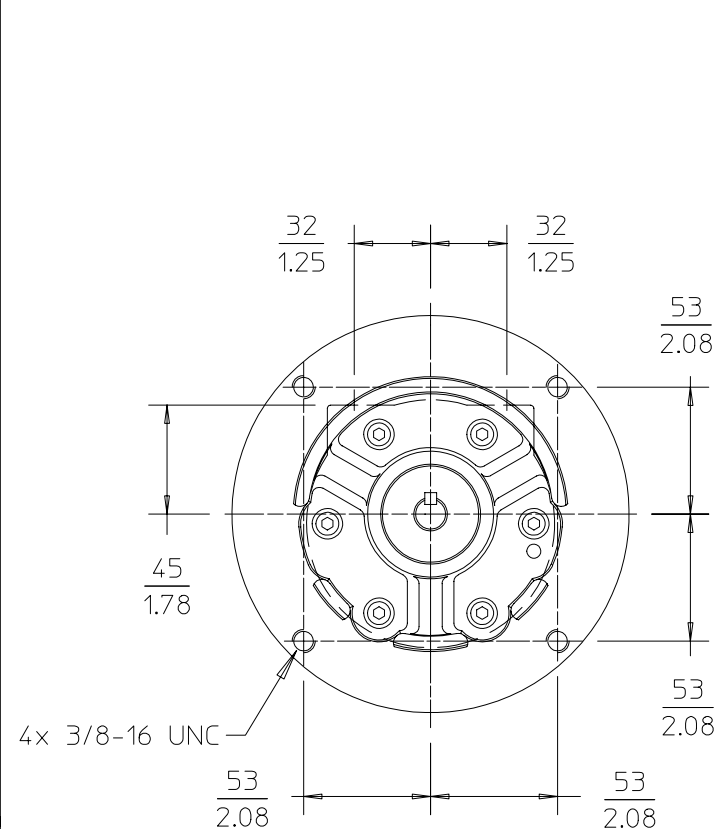
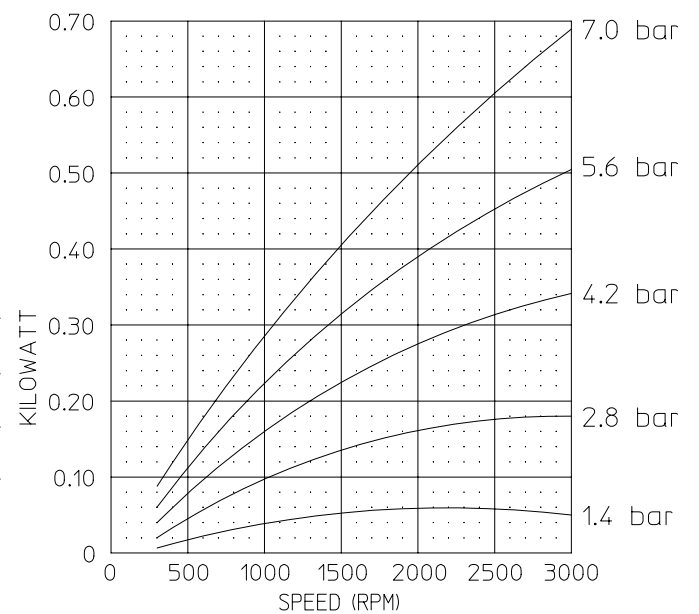
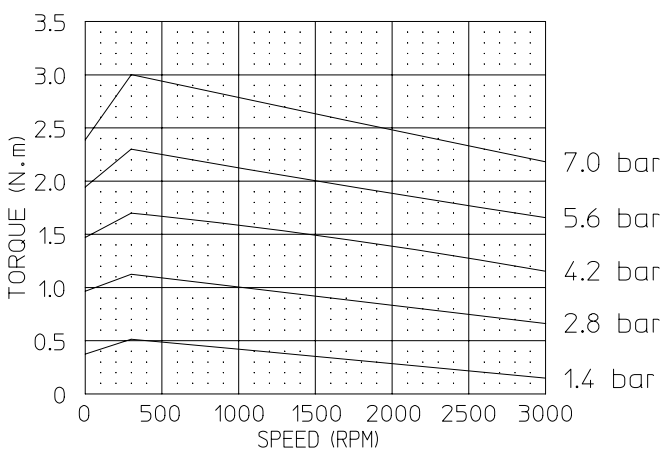
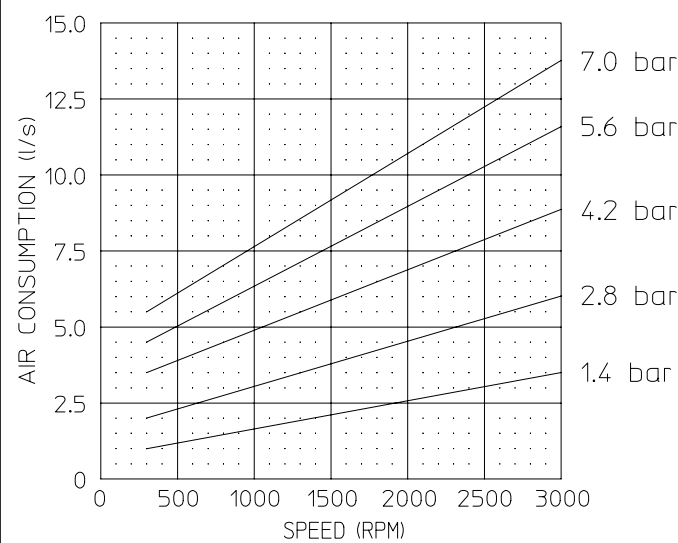
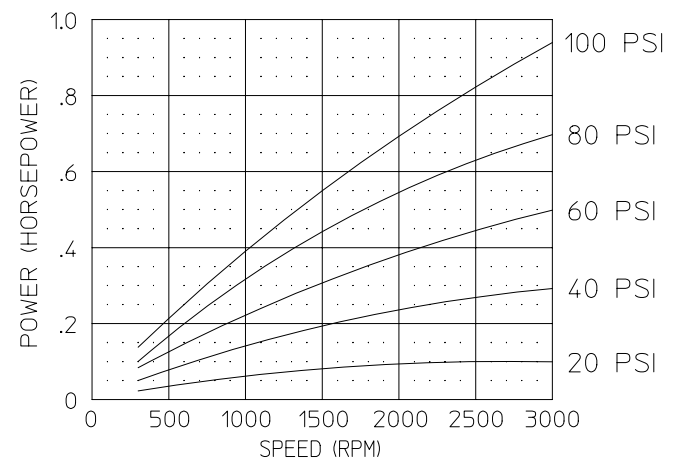
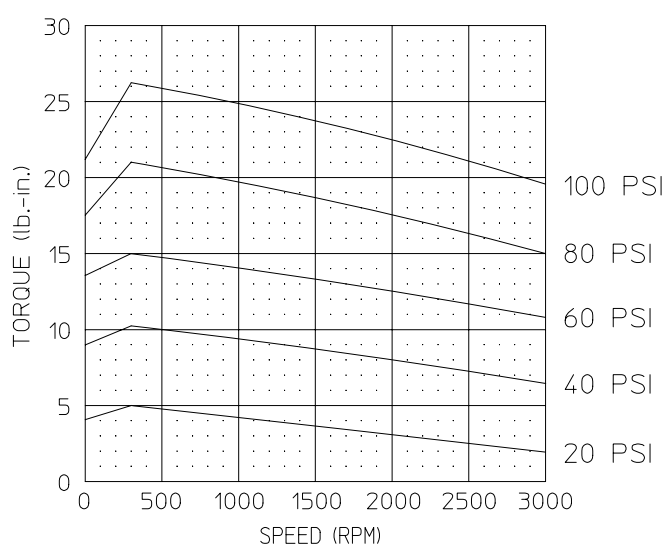
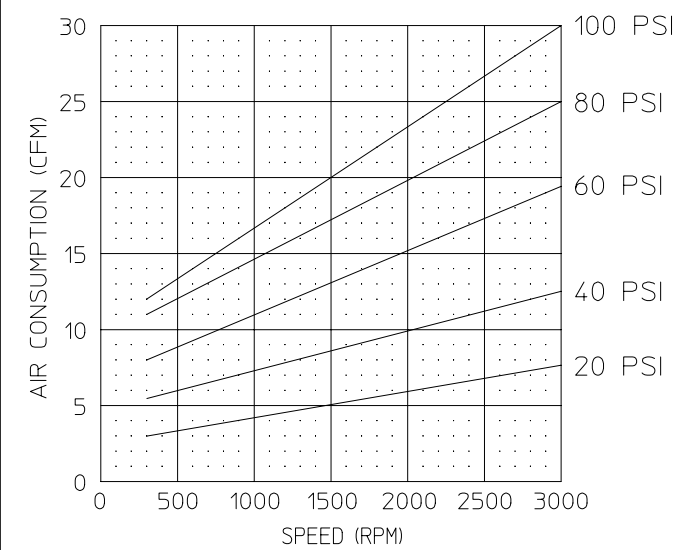
NORMAL AMBIENT +1°C. - 120°C.

RELATIVE HUMIDITY 0% - 100%

ENVIRONMENT HAZARDOUS AMBIENT COMBUSTIBLE
GAS AND DUST +1°C TO +40°C

CONFORMS TO EUROPEAN STD. EN13463-1 NON-ELECTRICAL EQUIPMENT FOR EXPLOSIVE ATMOSPHERES GROUP II, CAT. 2 (GAS & DUST) PROTECTED BY CONSTRUCTION (SURFACE TEMP. RATING 135°C)

* TECHNICAL DATA SUBJECT TO CHANGE WITHOUT NOTICE.



MUFFLER ASM. - UNATTACHED

