



## 2 Watt RF Load With Chain DC to 12 GHz With N Male Input Brass Body

### RF Terminations Technical Data Sheet

**PE6TR1142C**

#### Features

- DC to 12 GHz Frequency Range
- 50 Ohm Impedance
- N Male Coaxial Interface
- Max VSWR 1.2:1
- Max Power 2 Watts (CW)
- Includes Beaded Chain

#### Applications

- WIFI 6E
- 5G Cellular bands
- SatCom
- Radar Systems
- Test and Measurement
- Commercial and Military
- Communication

#### Description

Pasternack's PE6TR1142C is an RF termination (also called RF load or dummy load) that operates from DC to 12 GHz and handles up to 2 Watt (CW). Our N termination / load has a male gender. PE6TR1142C N load termination offers 1.2:1 max VSWR.

RF load / terminations are indispensable components in many RF, microwave and millimeter wave systems where signal reflection from unused ports can potentially damage the device or reduce the signal integrity. By using a terminator on an unused port with a matched load (dummy load), the incident energy will be absorbed with minimal reflection. These termination components are commonly used to terminate devices such as couplers, circulators, and switches. They are also widely used in measurement systems to ensure accurate results. Pasternack offers a huge selection of RF, microwave and millimeter wave terminations up to 65 GHz with excellent performance over the entire operating range and power handling capabilities up to 800 Watt (CW).

#### Electrical Specifications

| Description  | Minimum | Typical | Maximum | Units |
|--|---------|---------|---------|-------|
| Frequency Range                                      | DC      |         | 12      | GHz   |
| Impedance  |         | 50      |         | Ohms  |
| VSWR   |         |         | 1.2:1   |       |
| Input Power (CW)<br>Derated linearly to 1W at +165°C |         |         | 2       | Watts |
| Dielectric Withstanding Voltage (DC)                 |         |         | 2,500   | Vdc   |
| Operating Voltage (DC)                               |         |         | 1,000   | Vdc   |

#### Mechanical Specifications

| Size   |                     |
|--------|---------------------|
| Length | 0.866 in [22 mm]    |
| Width  | 0.827 in [21.01 mm] |
| Height | 0.827 in [21.01 mm] |

Click the following link (or enter part number in "SEARCH" on website) to obtain additional part information including price, inventory and certifications: [2 Watt RF Load With Chain DC to 12 GHz With N Male Input Brass Body PE6TR1142C](#)



2 Watt RF Load With Chain DC to 12 GHz  
With N Male Input Brass Body

## RF Terminations Technical Data Sheet

**PE6TR1142C**

Weight 0.08 lbs [36.29 g]  
Package Type Connectorized

**Configuration**  
Connector N Male

### Material Specifications

| Description         | Material         | Plating               |
|---------------------|------------------|-----------------------|
| Connector 1 Contact | Beryllium Copper | Gold                  |
| Insulation          | Teflon           |                       |
| Body                | Brass            | Copper-Tin-Zinc Alloy |
| Coupling Nut        | Brass            | Copper-Tin-Zinc Alloy |
| Chain               | Brass            | Copper-Tin-Zinc Alloy |

### Environmental Specifications

#### Temperature

Operating Range -55 to +165 deg C  
Humidity MIL-STD-202, Method 106  
Thermal Shock MIL-STD-202, Method 107, Condition B  
Salt Spray MIL-STD-202, Method 101, Condition B

**Compliance Certifications** (see [product page](#) for current document)

### Plotted and Other Data

Notes:

Click the following link (or enter part number in "SEARCH" on website) to obtain additional part information including price, inventory and certifications: [2 Watt RF Load With Chain DC to 12 GHz With N Male Input Brass Body PE6TR1142C](#)



2 Watt RF Load With Chain DC to 12 GHz  
With N Male Input Brass Body

**RF Terminations Technical Data Sheet**

**PE6TR1142C**

2 Watt RF Load With Chain DC to 12 GHz With N Male Input Brass Body from Pasternack Enterprises has same day shipment for domestic and International orders. Our RF, microwave and millimeter wave products maintain a 99.4% availability and are part of the broadest selection in the industry.

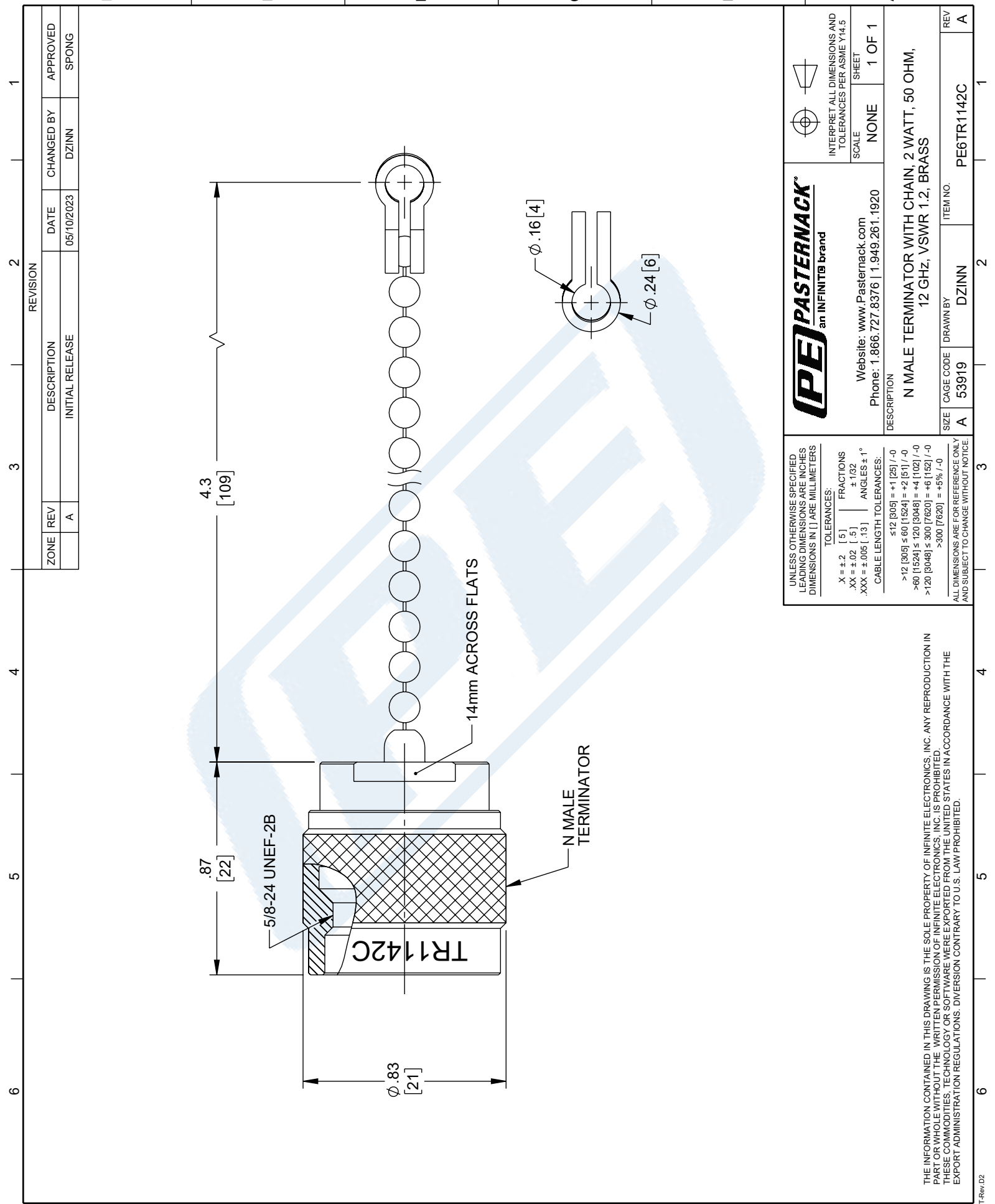
Click the following link (or enter part number in "SEARCH" on website) to obtain additional part information including price, inventory and certifications: [2 Watt RF Load With Chain DC to 12 GHz With N Male Input Brass Body PE6TR1142C](https://www.pasternack.com/2-watts-n-male-feed-thru-load-12-ghz-pe6tr1142c-p.aspx)

URL: <https://www.pasternack.com/2-watts-n-male-feed-thru-load-12-ghz-pe6tr1142c-p.aspx>

The information contained in this document is accurate to the best of our knowledge and representative of the part described herein. It may be necessary to make modifications to the part and/or the documentation of the part, in order to implement improvements. Pasternack reserves the right to make such changes as required. Unless otherwise stated, all specifications are nominal. Pasternack does not make any representation or warranty regarding the suitability of the part described herein for any particular purpose, and Pasternack does not assume any liability arising out of the use of any part or documentation.

# PE6TR1142C CAD Drawing

2 Watt RF Load With Chain DC to 12 GHz With N Male Input Brass Body



| ZONE | REV | DESCRIPTION     | DATE       | CHANGED BY | APPROVED |
|------|-----|-----------------|------------|------------|----------|
|      | A   | INITIAL RELEASE | 05/10/2023 | DZINN      | SPONG    |

|   |   |
|---|---|
| <p><b>PE PASTERNAK</b><br/>an INFINITI<sup>®</sup> brand</p> <p>Website: <a href="http://www.Pasternack.com">www.Pasternack.com</a><br/>Phone: 1.866.727.8376   1.949.261.1920</p>  | <p>INTERPRET ALL DIMENSIONS AND TOLERANCES PER ASME Y14.5</p> <p>SCALE: NONE</p> <p>SHEET: 1 OF 1</p> |
|   | <p>DESCRIPTION: N MALE TERMINATOR WITH CHAIN, 2 WATT, 50 OHM, 12 GHz, VSWR 1.2, BRASS</p>             |
| <p>UNLESS OTHERWISE SPECIFIED LEADING DIMENSIONS ARE INCHES DIMENSIONS IN [ ] ARE MILLIMETERS</p> <p>TOLERANCES:<br/>         .X = ±.2 [5]      FRACTIONS ± 1/32<br/>         .XX = ±.02 [.5]      ANGLES ± 1°<br/>         .XXX = ±.005 [.13]</p> <p>CABLE LENGTH TOLERANCES:<br/>         ≤12 [305] = +1 [25] / -0<br/>         &gt;12 [305] ≤ 60 [1524] = +2 [51] / -0<br/>         &gt;60 [1524] ≤ 120 [3048] = +4 [102] / -0<br/>         &gt;120 [3048] ≤ 300 [7620] = +6 [152] / -0<br/>         &gt;300 [7620] = +5% / -0</p> <p>ALL DIMENSIONS ARE FOR REFERENCE ONLY AND SUBJECT TO CHANGE WITHOUT NOTICE</p> | <p>ITEM NO. PE6TR1142C</p>  |

THE INFORMATION CONTAINED IN THIS DRAWING IS THE SOLE PROPERTY OF INFINITE ELECTRONICS, INC. ANY REPRODUCTION IN PART OR WHOLE WITHOUT THE WRITTEN PERMISSION OF INFINITE ELECTRONICS, INC. IS PROHIBITED. THESE COMMODITIES, TECHNOLOGY OR SOFTWARE WERE EXPORTED FROM THE UNITED STATES IN ACCORDANCE WITH THE EXPORT ADMINISTRATION REGULATIONS. DIVERSION CONTRARY TO U.S. LAW PROHIBITED.