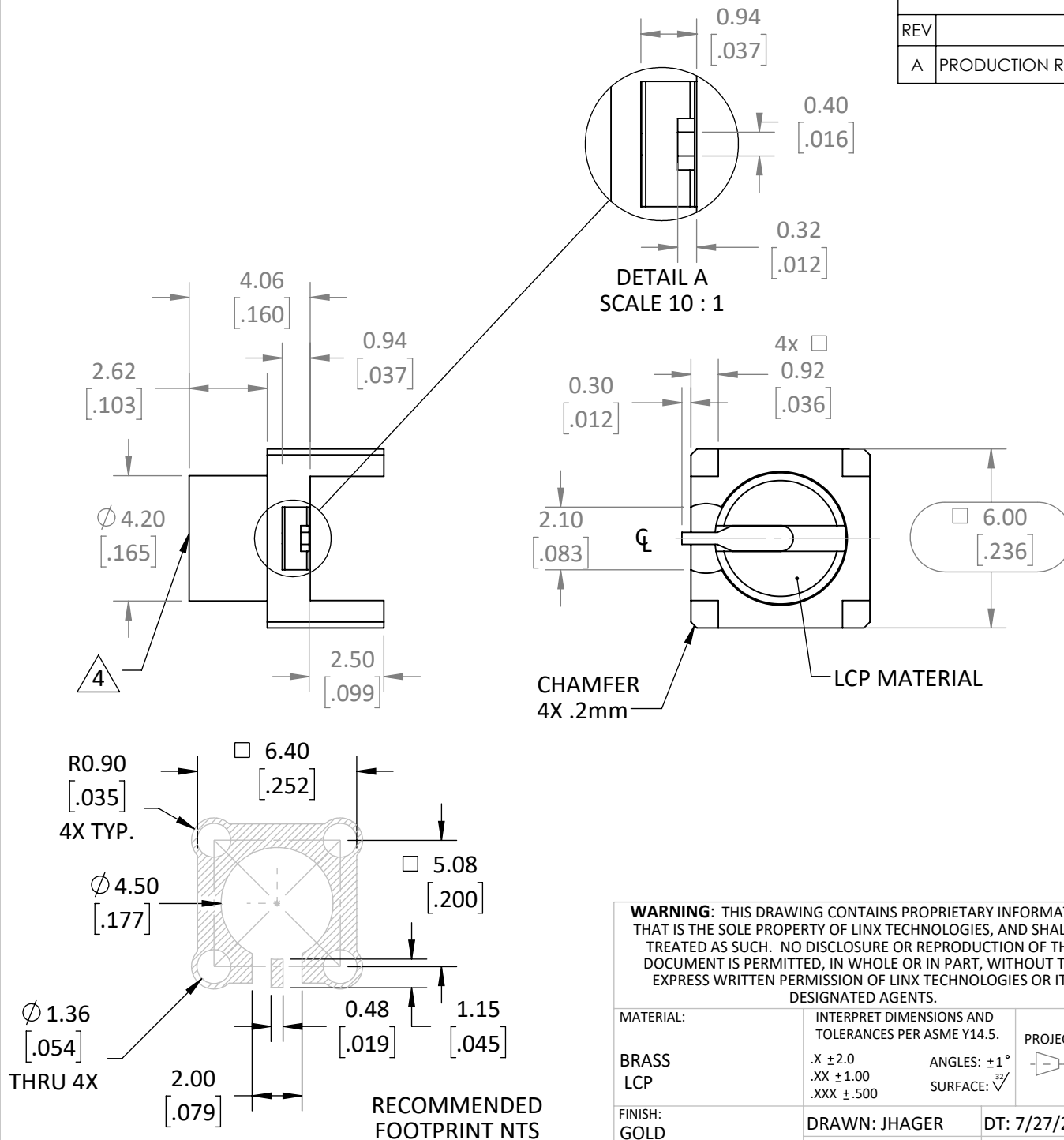


REVISIONS			
REV	DESCRIPTION	DATE	APPV
A	PRODUCTION RELEASE	JHAGER 7/30/21	



NOTES: (UNLESS OTHERWISE SPECIFIED)

- ALL DIMENSIONS ARE IN MILLIMETERS [IN].
- DIMENSIONS APPLY AFTER FINISHING.
- MANUFACTURE TO BE COMPLIANT WITH EU RoHS DIRECTIVE, USE MATERIALS THAT DO NOT CONTAIN REACH SUBSTANCES OF VERY HIGH CONCERN >1000ppm, AND USE DRC CONFLICT-FREE SOURCED MATERIALS.
- UNLISTED GEOMETRY CONTROLLED BY SOLID MODEL AT LATEST REVISION.
- INTERFACE SMP "LIMITED DETENT" IAW MIL-STD-348B
- IMPEDANCE: 50Ω
- FREQUENCY LIMIT: DC - 26.5GHz
- TAPE AND REEL IAW ASTM EIA481-B
 - PITCH: 12mm
 - TAPE SIZE: 16mm
 - EMBOSSED CARRIER.
- VACUUM DOT ON TOP OF PART
- INSERTION LOSS: NTE .075xvf (GHz)
- LABEL BOX, BAG, AND REEL IAW LINX LABEL DRAWING [MEC-LBL-4x2.5-PAPER-ID]



159 ORT LANE
MERLIN, OR 97532

TITLE:
SMP Connector Plug, Male Pin
50Ω Through Mount Solder

SIZE	DWG. NO.	REV
A	C-CONSMP001-G-T	A

SCALE: 5:1 DO NOT SCALE DRAWING SHEET 1 OF 1