

S CN BN - J 1 2 50 - SO RPM

SUNTSU

CONNECTOR

BNC

Connector Type
Jack

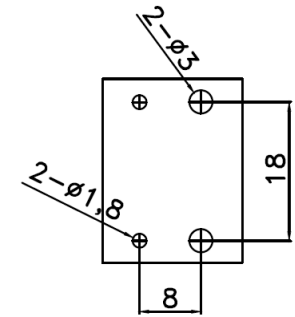
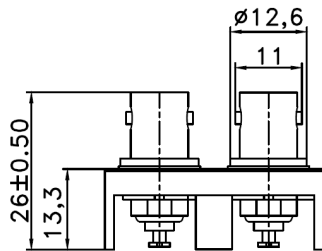
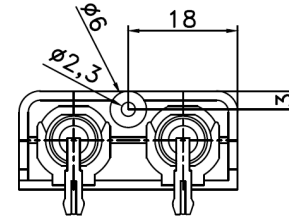
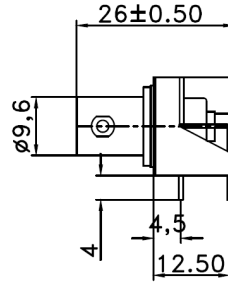
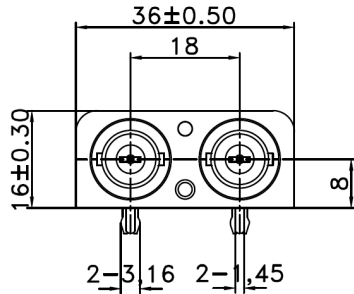
Rows

Connectors
per Row
2

Impedance
50

Contact Termination
Solder

Mounting Style
Right Angle PCB
Mount



Recommended
Mounting
Layout

1. Materials:

- a) Body: Zinc Nickel Plated
- b) Contact: Brass Nickel Plated
- c) Insulator: POM Natural
- 2. Normal Impedance: 50Ω
- 3. Frequency Range: 0-2 GHz
- 4. Max Peak Voltage: 500V
- 5. Dielectric Strength: 1500V RMS
- 6. Insulation Resistance: 5000MΩ/Min



TWO BNC FEMALE IN ONE ROW
90°

Document History				Part No.	REV.	Drawn	Page
Edits Made	Date	Edited By	Approved By	SCNBN-J1250-SORPM	A	B. Gibbons	06/28/2021
Initial Release	06/28/2021	B. Gibbons	KH Mun				06/28/2021
				Drawing No.	SCALE	Checked	1 / 1
					None	KH Mun	
				Tolerance	UNIT	Approved	
					mm	KH Mun	06/28/2021