



F Female Connector Solder Attachment Bulkhead PCB Surface Mount with Tab Contact

RF Connectors Technical Data Sheet

PE44328

Configuration

- F Female Connector
- 75 Ohms
- Straight Body Geometry
- Connector Interface Types: PCB
- Bulkhead

Features

- Max. Operating Frequency 2 GHz
- Gold Plated Brass Contact

Applications

- General Purpose Test
- Rack and Panel Mount Applications
- CATV
- Audio/Video Applications

Description

Pasternack's PE44328 type F, F, Standard, connector with solder attachment PCB terminal is part of our full line of RF components available for same-day shipping. Our type F female connector operates up to a maximum frequency of 2 GHz. This type F bulkhead connector allows designers to create external connections on their product enclosures, and can be used in a variety of other rack mount and panel mount applications.

Our 75 ohm type F female PCB Mount bulkhead connector PE44328 datasheet specifications and drawing with dimensions are shown below in this PDF. Pasternack's broad catalog of RF, microwave and millimeter wave connectors allows designers to configure and customize their signal connections however they like. Whether the need is to provide an I/O for a board design, or simply create a custom cable assembly configuration, Pasternack has the right connector for the job. Pasternack can also expertly build your custom cable assemblies for you and ship same-day.

Electrical Specifications

Description	Minimum	Typical	Maximum	Units
Frequency Range	DC		2	GHz
Impedance		75		Ohms

Mechanical Specifications

Size	
Length	0.82 in [20.83 mm]
Width	0.33 in [8.38 mm]
Height	0.33 in [8.38 mm]
Weight	1.65 lbs [748.43 g]

Click the following link (or enter part number in "SEARCH" on website) to obtain additional part information including price, inventory and certifications: [F Female Connector Solder Attachment Bulkhead PCB Surface Mount with Tab Contact PE44328](#)



F Female Connector Solder Attachment Bulkhead
PCB Surface Mount with Tab Contact

RF Connectors
Technical Data Sheet

PE44328

Material Specifications

Description	Material	Plating
Contact	Brass	Gold
Insulation	PP	
Body	Brass	Nickel
Coupling Nut	Brass	Nickel
Washer	Brass	Nickel

Environmental Specifications

Temperature

Operating Range

-55 to 85 deg C

Compliance Certifications (see [product page](#) for current document)

Plotted and Other Data

Notes:

F Female Connector Solder Attachment Bulkhead PCB Surface Mount with Tab Contact from Pasternack Enterprises has same day shipment for domestic and International orders. Our RF, microwave and millimeter wave products maintain a 99.4% availability and are part of the broadest selection in the industry.

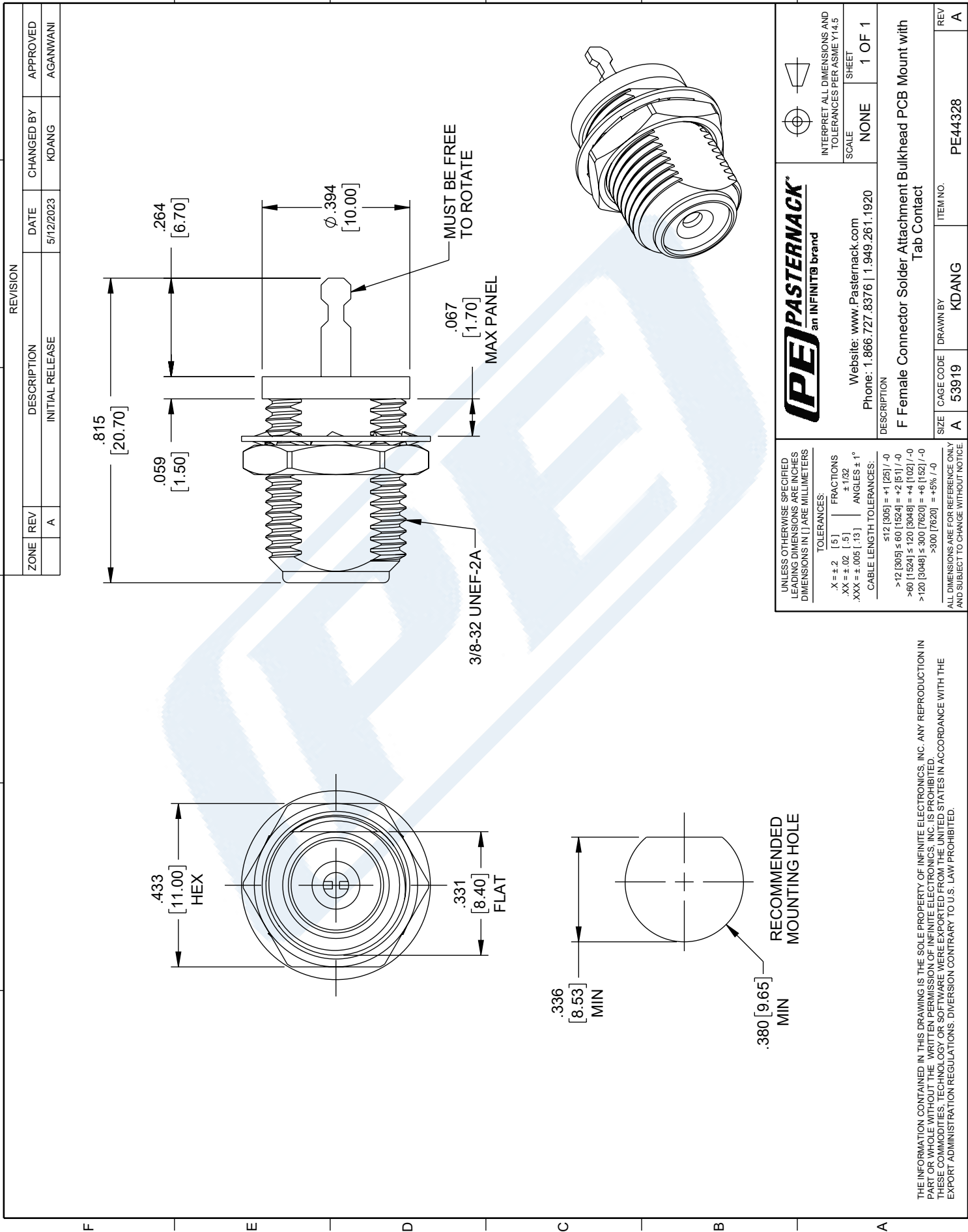
Click the following link (or enter part number in "SEARCH" on website) to obtain additional part information including price, inventory and certifications: [F Female Connector Solder Attachment Bulkhead PCB Surface Mount with Tab Contact PE44328](#)

URL: <https://www.pasternack.com/f-female-bulkhead-rear-mount-tab-contact-pe44328-p.aspx>

The information contained in this document is accurate to the best of our knowledge and representative of the part described herein. It may be necessary to make modifications to the part and/or the documentation of the part, in order to implement improvements. Pasternack reserves the right to make such changes as required. Unless otherwise stated, all specifications are nominal. Pasternack does not make any representation or warranty regarding the suitability of the part described herein for any particular purpose, and Pasternack does not assume any liability arising out of the use of any part or documentation.

PE44328 CAD Drawing

F Female Connector Solder Attachment Bulkhead PCB Surface Mount with Tab Contact



PE PASTERNAK an INFINITI® brand		
Website: www.Pasternack.com Phone: 1.866.727.8376 1.949.261.1920	SCALE NONE	SHEET 1 OF 1
DESCRIPTION F Female Connector Solder Attachment Bulkhead PCB Mount with Tab Contact		
SIZE A	CAGE CODE 53919	DRAWN BY KDANG
ITEM NO. PE44328		REV A

UNLESS OTHERWISE SPECIFIED
LEADING DIMENSIONS ARE INCHES
DIMENSIONS IN [] ARE MILLIMETERS

TOLERANCES:

X = ± .2	[.5]	FRACTIONS
.XX = ± .02	[.13]	± 1/32
.XXX = ± .005	[.13]	ANGLES ± 1°

CABLE LENGTH TOLERANCES:

≤ 12 [305]	± .125 [-0]
> 12 [305] ≤ 60 [1524]	± .25 [-0]
> 60 [1524] ≤ 120 [3048]	± .5 [-0]
> 120 [3048] ≤ 300 [7620]	± .75 [-0]
> 300 [7620]	± .5% [-0]

ALL DIMENSIONS ARE FOR REFERENCE ONLY
AND SUBJECT TO CHANGE WITHOUT NOTICE

THE INFORMATION CONTAINED IN THIS DRAWING IS THE SOLE PROPERTY OF INFINITE ELECTRONICS, INC. ANY REPRODUCTION IN PART OR WHOLE WITHOUT THE WRITTEN PERMISSION OF INFINITE ELECTRONICS, INC. IS PROHIBITED. THESE COMMODITIES, TECHNOLOGY OR SOFTWARE WERE EXPORTED FROM THE UNITED STATES IN ACCORDANCE WITH THE EXPORT ADMINISTRATION REGULATIONS. DIVERSION CONTRARY TO U.S. LAW PROHIBITED.