



1.0/2.3 Jack Right Angle Connector Solder Attachment Thru Hole PCB, .200 inch x .055 inch Hole Spacing

RF Connectors Technical Data Sheet

PE44258

Configuration

- 1.0/2.3 Jack Connector
- 50 Ohms
- Right Angle Body Geometry
- Thru Hole Interface Type
- Solder Attachment

Features

- Max. Operating Frequency 4 GHz
- Good VSWR of 1.5:1
- Gold Plated Beryllium Copper Contact
- 30 µin minimum contact plating

Applications

- General Purpose Test
- PCB Applications

Description

Pasternack's PE44258 1.0/2.3 jack right angle connector with solder attachment for Thru Hole PCB (.200 inch x .055 inch hole spacing) is part of our full line of RF components available for same-day shipping. Our 1.0/2.3 jack connector operates up to a maximum frequency of 4 GHz and offers good VSWR of 1.5:1. Its right angle body geometry allows for easier connections in tight spaces.

Our 1.0/2.3 jack right angle connector PE44258 datasheet specifications and drawing with dimensions are shown below in this PDF. Pasternack's broad catalog of RF, microwave and millimeter wave connectors allows designers to configure and customize their signal connections however they like. Whether the need is to provide an I/O for a board design, or simply create a custom cable assembly configuration, Pasternack has the right connector for the job. Pasternack can also expertly build your custom cable assemblies for you and ship same-day.

Electrical Specifications

| Description | Minimum | Typical | Maximum | Units |
|------------------------|---------|---------|---------|-------|
| Frequency Range | DC | | 4 | GHz |
| VSWR | | | 1.5:1 | |
| Operating Voltage (AC) | | | 250 | Vrms |

Mechanical Specifications

Size

| | |
|------------|---------------------|
| Length | 0.752 in [19.1 mm] |
| Width/Dia. | 0.236 in [5.99 mm] |
| Height | 0.394 in [10.01 mm] |
| Weight | 0.008 lbs [3.63 g] |

Click the following link (or enter part number in "SEARCH" on website) to obtain additional part information including price, inventory and certifications: [1.0/2.3 Jack Right Angle Connector Solder Attachment Thru Hole PCB, .200 inch x .055 inch Hole Spacing PE44258](#)



1.0/2.3 Jack Right Angle Connector Solder Attachment Thru Hole PCB, .200 inch x .055 inch Hole Spacing

RF Connectors Technical Data Sheet

PE44258

Material Specifications

| Description | Material | Plating |
|-------------|------------------|------------------------|
| Contact | Beryllium Copper | Gold 30 µin minimum |
| Insulation | PTFE | |
| Body | Brass | Gold 3 µin minimum |

Environmental Specifications

Temperature

Operating Range -55 to +125 deg C

Compliance Certifications (see [product page](#) for current document)

Plotted and Other Data

Notes:

1.0/2.3 Jack Right Angle Connector Solder Attachment Thru Hole PCB, .200 inch x .055 inch Hole Spacing from Pasternack Enterprises has same day shipment for domestic and International orders. Our RF, microwave and millimeter wave products maintain a 99.4% availability and are part of the broadest selection in the industry.

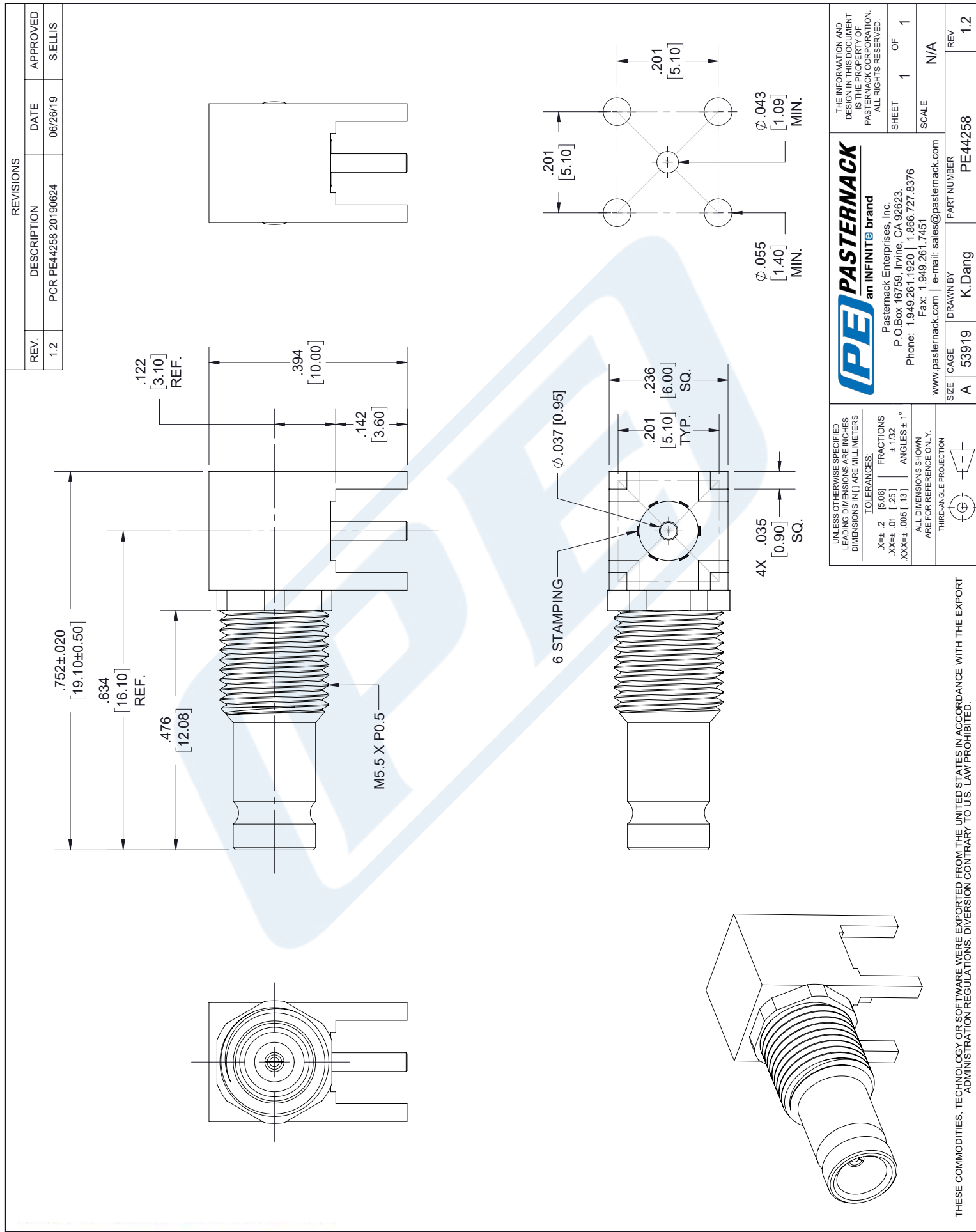
Click the following link (or enter part number in "SEARCH" on website) to obtain additional part information including price, inventory and certifications: [1.0/2.3 Jack Right Angle Connector Solder Attachment Thru Hole PCB, .200 inch x .055 inch Hole Spacing PE44258](#)

URL: <https://www.pasternack.com/1.0-2.3-jack-standard-thru-hole-pcb-connector-pe44258-p.aspx>

The information contained in this document is accurate to the best of our knowledge and representative of the part described herein. It may be necessary to make modifications to the part and/or the documentation of the part, in order to implement improvements. Pasternack reserves the right to make such changes as required. Unless otherwise stated, all specifications are nominal. Pasternack does not make any representation or warranty regarding the suitability of the part described herein for any particular purpose, and Pasternack does not assume any liability arising out of the use of any part or documentation.

PE44258 CAD Drawing

1.0/2.3 Jack Right Angle Connector Solder Attachment Thru Hole PCB, .200 inch x .055 inch Hole Spacing



PE PASTERNAK
an INFINITI brand

Pasternack Enterprises, Inc.
P.O. Box 16759, Irvine, CA 92623.
Phone: 1.949.261.1920 | 1.866.727.8376
Fax: 1.949.261.7451
www.pasternack.com | e-mail: sales@pasternack.com

UNLESS OTHERWISE SPECIFIED
LEADING DIMENSIONS ARE IN INCHES
DIMENSIONS IN [] ARE MILLIMETERS

TOLERANCES:

| | | |
|----------|--------|-------------|
| X±.2 | [5.08] | FRACTIONS |
| XX±.01 | [.25] | ±.132 |
| XXX±.005 | [.13] | ANGLES ± 1° |

ALL DIMENSIONS SHOWN
ARE FOR REFERENCE ONLY.

THIRD-ANGLE PROJECTION

THE INFORMATION AND
DESIGN IN THIS DOCUMENT
IS THE PROPERTY OF
PASTERNAK CORPORATION.
ALL RIGHTS RESERVED.

SHEET 1 OF 1

SCALE N/A

REV 1.2

PART NUMBER
PE44258

DRAWN BY
K.Dang

CAGE
A 53919

SIZE
A

3