

Material and Plating:

Insulator A: Teflon
Insulator B: Teflon
Body: Brass, Gold Plated
Pin: Phosphor Bronze, Gold Plated
Gasket A: Silicon, Color: Red
Gasket B: Silicon, Color: Red
O-Ring: Silicone, Color: Red
Barrel: Brass, Gold Plated

Washer: Brass, Gold Plated

Nut: Brass, Gold Plated

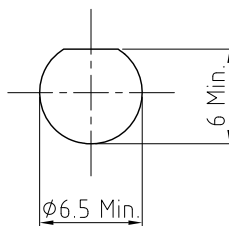
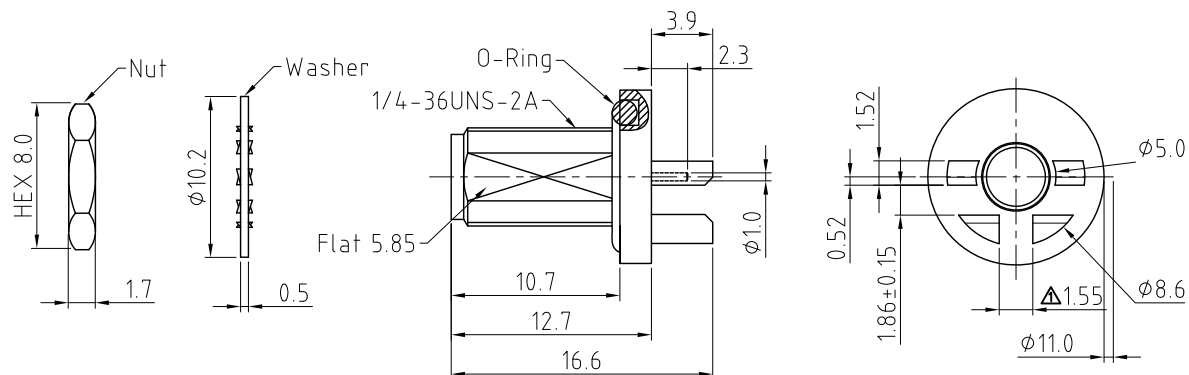
Environmental:

A. Tested to:

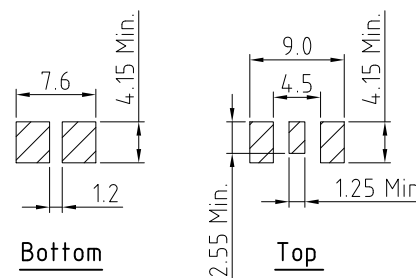
- i. IP6x – Dust tight – no particle ingress.
- ii. IPx8 Waterproof for 48 hours at 1 meter underwater.
- iii. IPx9K Water spray, 14–16L per minute, at 8,000 ~ 10,000 kPa, at 100–150mm distance for 30 seconds.

Notes:

1. Working Frequency Range: DC-6GHz.
2. Operating Temperature: -65°C to +165°C.
3. Impedance: 50 Ohm
4. VSWR: 1.5 Max.
5. Recommended PCB Thickness: 1.6mm.



Recommended Mounting Hole



Recommended Foot Print

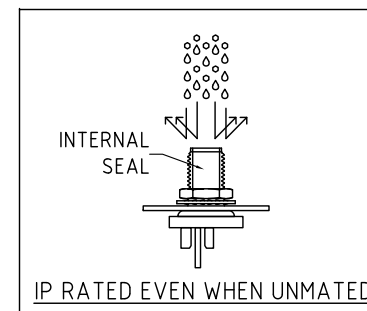
HOW TO ORDER




RFPC - SMA23 - FN - 186 - X

WASHER AND NUT OPTIONS:

BLANK = SEPARATELY PACKED (STANDARD)

A = ALL ASSEMBLED WITH CONNECTOR



REV. DATE & DRN 11 26/06/23 - NYM 12 08/09/23 - NYM 13 31/03/24 - CC ADD IP RATING VIEW	Scale: NTS	THIRD ANGLE	Unstated Tolerances: .X ±0.2 .XX ±0.2 .XXX ±0.2 ANGLES N/A	 IP Rated RF Products	 www.gradconn.com	Type: RFPC-SMA23-FN
	Drawn: CC					RFPC-SMA23-FN-186
	App'd: XXX	Title SMA PCB Connector				Drawing Number:
	Date: 31 MAR. '24	Revision: 1.3	Unit: mm	© THIS DRAWING IS CONFIDENTIAL AND MUST NOT BE COPIED OR DISCLOSED WITHOUT WRITTEN CONSENT		Sheet 1 of 1 Drawing © E and O E