

SHV Plug (Male) Connector For RG59 Cable, Crimp/Solder



SC6517

Configuration

- SHV Plug Connector
- 50 Ohms
- Straight Body Geometry
- Connector Interface Types: RG59, RG62, RG71, RG140, RG210

Features

- Operating Frequency of 300 MHz Max.
- Excellent VSWR of 1.25:1
- Silver Plated Beryllium Copper Contact

Applications

- General Purpose Test
- Custom Cable Assemblies

Description

SHV Plug Standard Connector Crimp/Solder Attachment for RG59, RG62, RG71, RG140 and RG210 Cable, part number SC6517, from Fairview Microwave is in-stock and ships same day. This SHV plug connector operates up to a maximum frequency of 300 MHz and offers excellent VSWR of 1.25:1.

Fairview's SHV plug connector SC6517 datasheet specifications and outline drawing are shown in this PDF below. Our extensive offering of RF, microwave and millimeter wave connectors allows designers to configure and customize their signal connections however they like. From providing an I/O for a board design to creating a custom cable assembly configuration, Fairview Microwave has a connector solution to meet your needs. Fairview Microwave also has the expertise to build your custom cable assemblies for you and ship them same-day.

Electrical Specifications

Description	Minimum	Typical	Maximum	Units
Frequency Range	DC		300	MHz
VSWR			1.25:1	
Operating Voltage (AC)			3,500	Vrms
Dielectric Withstanding Voltage (AC)			5,000	Vrms
Insulation Resistance	5,000			MOhms
Impedance		50		Ohms

Mechanical Specifications

Size

Length	1.79 in [45.47 mm]
Width	0.56 in [14.22 mm]
Height	0.5 in [12.7 mm]
Weight	0.0375 lbs [17.01 g]
Mating Cycles	500 Cycles

SHV Plug (Male) Connector For RG59 Cable, Crimp/Solder



SC6517

Material Specifications

Description	Material	Plating
Contact	Beryllium Copper	Silver
Contact Spring	Beryllium Copper	Nickel
Insulation	PTFE	
Outer Conductor	Brass	Nickel
Body	Brass	Nickel
Coupling Nut	Brass	Nickel
Gasket	Silicone	
Crimp Sleeve	Brass	Nickel
Washer	Brass	Nickel

Environmental Specifications

Temperature

Operating Range -65 to +165 deg C

Compliance Certifications (see [product page](#) for current document)

DFARS Compliant Yes

Plotted and Other Data

Notes:

SHV Plug (Male) Connector For RG59 Cable, Crimp/Solder from Fairview Microwave is in-stock and available to ship same-day. All of our RF/microwave products are available off-the-shelf from our ISO 9001:2008 certified facilities in Lewisville, Texas. Fairview Microwave is RF on-demand.

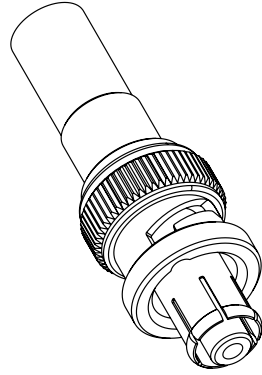
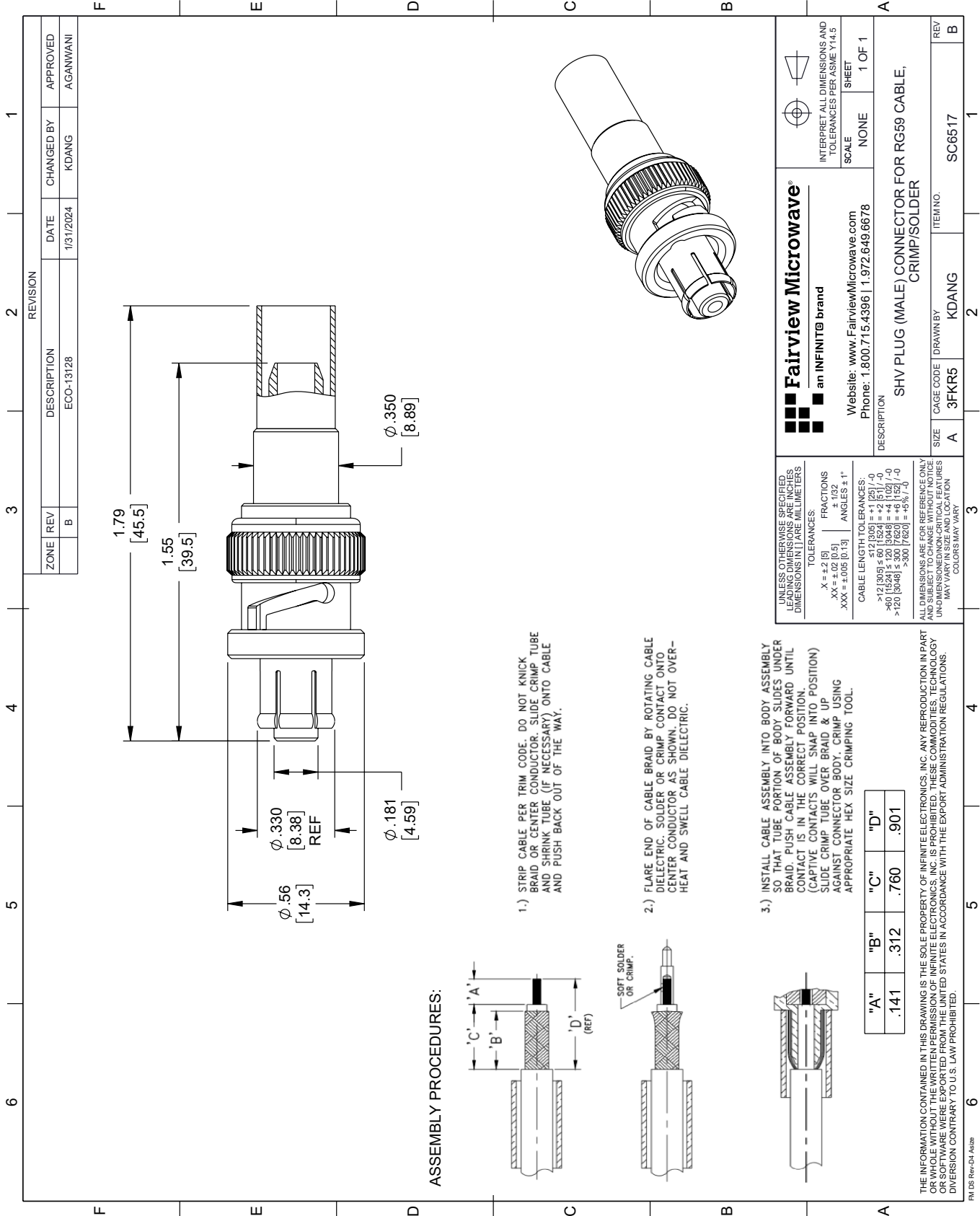
For additional information on this product, please click the following link: [SHV Plug \(Male\) Connector For RG59 Cable, Crimp/Solder SC6517](#)

URL: <https://www.fairviewmicrowave.com/shv-plug-standard-rg59-connector-sc6517-p.aspx>

The information contained within this document is accurate to the best of our knowledge and representative of the part described herein. It may be necessary to make modifications to the part and/or the documentation of the part in order to implement improvements. Fairview Microwave reserves the right to make such changes as required. Unless otherwise stated, all specifications are nominal. Fairview Microwave does not make any representation or warranty regarding the suitability of the part described herein for any particular purpose, and Fairview Microwave does not assume liability arising out of the use of any part or document.

SC6517 CAD Drawing

SHV Plug (Male) Connector For RG59 Cable, Crimp/Solder



Fairview Microwave® an INFINIT® brand Website: www.FairviewMicrowave.com Phone: 1.800.715.4396 1.972.649.6678		INTERPRET ALL DIMENSIONS AND TOLERANCES PER ASME Y14.5 SCALE: NONE SHEET: 1 OF 1
DESCRIPTION: SHV PLUG (MALE) CONNECTOR FOR RG59 CABLE, CRIMP/SOLDER		
SIZE: A CAGE CODE: 3FKR5 DRAWN BY: KDANG	ITEM NO.: SC6517	REV: B

UNLESS OTHERWISE SPECIFIED, LEADING DIMENSIONS ARE IN INCHES. DIMENSIONS IN [] ARE MILLIMETERS.

TOLERANCES:

.X = ±.2 [5] FRACTIONS
 .XX = ±.02 [0.5] ±.1/32
 .XXX = ±.005 [0.13] ANGLES ± 1°

CABLE LENGTH TOLERANCES:

>12 [305] ≤ 60 [1524] = ±.125 [-0]
 >60 [1524] ≤ 120 [3048] = ±.1 [2.5] [-0]
 >120 [3048] ≤ 300 [7620] = ±.125 [-0]
 >300 [7620] = ±.15 [-0]

ALL DIMENSIONS ARE FOR REFERENCE ONLY. UNDIMENSIONED/NON-CRITICAL FEATURES MAY VARY IN SIZE AND LOCATION. COLORS MAY VARY.

THE INFORMATION CONTAINED IN THIS DRAWING IS THE SOLE PROPERTY OF INFINITE ELECTRONICS, INC. ANY REPRODUCTION IN PART OR WHOLE WITHOUT THE WRITTEN PERMISSION OF INFINITE ELECTRONICS, INC. IS PROHIBITED. THESE COMMODITIES, TECHNOLOGY OR SOFTWARE WERE EXPORTED FROM THE UNITED STATES IN ACCORDANCE WITH THE EXPORT ADMINISTRATION REGULATIONS. DIVISION CONTRARY TO U.S. LAW PROHIBITED.

PM DS Rev-D4 Alt2