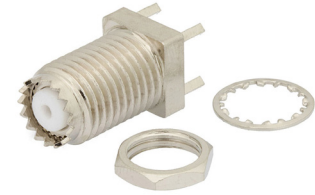


RF PCB Connector, Mini UHF Female Bulkhead Mount Connector Solder Attachment Thru Hole PCB, .380 inch Diameter

Mini UHF female bulkhead connector with solder attachment for thru hole PCB (.380 inch diameter), part number FMCN44092, from Fairview Microwave is in-stock and ships same day. This Mini UHF female connector operates up to a maximum frequency of 2.5 GHz and offers good VSWR of 1.3:1. Fairview's FMCN44092 bulkhead Mini UHF connector enables designers to make external connections on product enclosures, and can be used in a variety of other rack mount and panel mount applications.

Fairview's Mini UHF female bulkhead connector FMCN44092 datasheet specifications and outline drawing are shown in this PDF below. Our extensive offering of RF, microwave and millimeter wave connectors allows designers to configure and customize their signal connections however they like. From providing an I/O for a board design to creating a custom cable assembly configuration, Fairview Microwave has a connector solution to meet your needs. Fairview Microwave also has the expertise to build your custom cable assemblies for you and ship them same-day.



Configuration:

- Mini UHF Female Connector
- 50 Ohms
- Straight Body Geometry
- Thru Hole Interface Type
- Solder Attachment
- Bulkhead

Features:

- Operating Frequency of 2.5 GHz Max.
- Good VSWR of 1.3:1
- Gold Plated Brass Contact

Applications:

- General Purpose Test
- Rack and Panel Mount Applications
- Space Saving for PCB Applications

Electrical Specifications

Description	Min	Typ	Max	Units
Frequency Range	DC		2.5	GHz
VSWR			1.3:1	
Operating Voltage (AC)			335	Vrms

Mechanical Specifications

Size	
Length	0.819 in [20.8 mm]
Width/Dia.	0.374 in [9.50 mm]
Height	0.374 in [9.5 mm]
Weight	0.019 lbs [8.62 g]

Material Specifications

Description	Material	Plating
Contact	Brass	Gold
Insulation	PTFE	
Body	Brass	Nickel 100 µin minimum

Environmental Specifications

Temperature	
Operating Range	-55 to +85 deg C

Compliance Certifications (see [product page](#) for current document)

Plotted and Other Data

Notes:

Fairview Microwave
 301 Leora Ln., Suite 100
 Lewisville, TX 75056
 Tel: 1-800-715-4396 / (972) 649-6678
 Fax: (972) 649-6689
www.fairviewmicrowave.com
sales@fairviewmicrowave.com

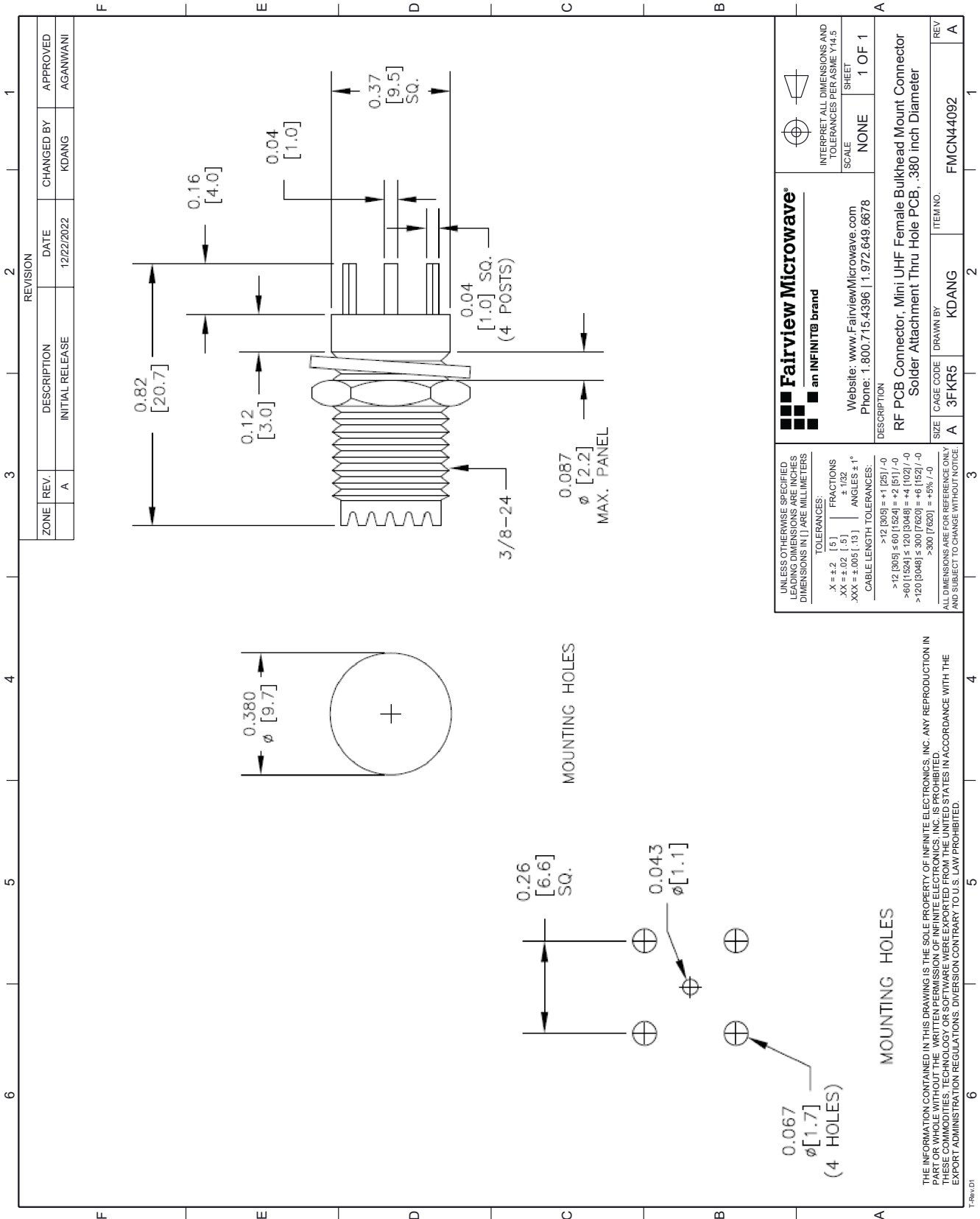
RF PCB Connector, Mini UHF Female Bulkhead Mount Connector Solder Attachment Thru Hole PCB, .380 inch Diameter from Fairview Microwave is in-stock and available to ship same-day. All of our RF/microwave products are available off-the-shelf from our ISO 9001:2008 certified facilities in Lewisville, Texas. Fairview Microwave is RF on-demand.

For additional information on this product, please click the following link: [RF PCB Connector, Mini UHF Female Bulkhead Mount Connector Solder Attachment Thru Hole PCB, .380 inch Diameter FMCN44092](#)

URL: <https://www.fairviewmicrowave.com/mini-uhf-female-standard-thru-hole-pcb-connector-fmcn44092-p.aspx>

The information contained in this document is accurate to the best of our knowledge and representative of the part described herein. It may be necessary to make modifications to the part and/or the documentation of the part, in order to implement improvements. Fairview Microwave reserves the right to make such changes as required. Unless otherwise stated, all specifications are nominal. Fairview Microwave does not make any representation or warranty regarding the suitability of the part described herein for any particular purpose, and Fairview Microwave does not assume any liability arising out of the use of any part or documentation.





REVISION		DATE	CHANGED BY	APPROVED
ZONE	REV.	DESCRIPTION	INITIAL RELEASE	
	A			AGANWANI

 Fairview Microwave[®] an INFINIT [®] brand		INTERPRET ALL DIMENSIONS AND TOLERANCES PER ASME Y14.5 SCALE: NONE SHEET: 1 OF 1
Website: www.FairviewMicrowave.com Phone: 1.800.715.4396 1.972.649.6678		
DESCRIPTION RF PCB Connector, Mini UHF Female Bulkhead Mount Connector Solder Attachment Thru Hole PCB, .380 inch Diameter		
SIZE	CAGE CODE	ITEM NO.
A	3FKR5	FMCN44092
DRAWN BY		REV
KDANG		A

UNLESS OTHERWISE SPECIFIED, DIMENSIONS AND TOLERANCES ARE IN MILLIMETERS

TOLERANCES:

.X = ±.2 (5) FRACTIONS ±.02 (.5) ±.005 (.13) ANGLES ± 1°

CABLE LENGTH TOLERANCES:

>12 (305) = +1 (25) / -0
 >60 (1524) ≤ 120 (3048) = +4 (102) / -0
 >120 (3048) ≤ 300 (7620) = +6 (152) / -0
 >300 (7620) = +5% / -0

ALL DIMENSIONS ARE FOR REFERENCE ONLY AND SUBJECT TO CHANGE WITHOUT NOTICE.

THE INFORMATION CONTAINED IN THIS DRAWING IS THE SOLE PROPERTY OF INFINITE ELECTRONICS, INC. ANY REPRODUCTION IN WHOLE OR IN PART WITHOUT THE WRITTEN PERMISSION OF INFINITE ELECTRONICS, INC. IS PROHIBITED. THESE COMMODITIES, TECHNOLOGY OR SOFTWARE WERE EXPORTED FROM THE UNITED STATES IN ACCORDANCE WITH THE EXPORT ADMINISTRATION REGULATIONS. DIVERSION CONTRARY TO U.S. LAW PROHIBITED.