

Low PIM 4.3-10 Female to NEX10 Female Adapter



PE91702

Configuration

- 4.3-10 Female Connector 1
- NEX10 Female Connector 2
- 50 Ohm
- Low PIM Design
- Straight Body Geometry

Features

- Typical PIM levels of -160 dBc
- Silver Plated Beryllium Copper Contact
- Max of VSWR 1.15:1 at 3GHz

Applications

- Allows Connection Between Series
- General Purpose Test
- Low PIM Applications

Description

Pasternack's PE91702 4.3-10 female to NEX10 female adapter is part of our full line of RF components available for same-day shipping. Our 4.3-10 to NEX10 adapter has a female to female gender configuration in a low PIM design. PE91702 4.3-10 female to NEX10 female adapter operates to 6 GHz. The Pasternack adapter provides a passive intermodulation of -160 dBc typical.

RF adapters are often used to enable connections between two connector types that would otherwise not mate. Certain adapter configurations can also be used to protect connectors on expensive equipment where the number of connect/disconnect cycles is high. An RF, microwave or millimeter wave adapter is connected to the equipment, and the commonly changed connection is made with the adapter which can be easily replaced when it wears out after high usage; such adapters are referred to as connector savers. Pasternack also offers bulkhead, panel mount, hermetically sealed, reverse polarity, and isolated ground adapter varieties to serve all of your RF, microwave and millimeter wave needs.

Electrical Specifications

Description	Minimum	Typical	Maximum	Units
Frequency Range	DC		6	GHz
Impedance		50 Ohm		
Passive Intermodulation		-160		dBc
Dielectric Withstanding Voltage (AC)			1,000	Vrms

Mechanical Specifications

Size

Length	1.58 in [40.13 mm]
Width	0.79 in [20.07 mm]
Height	0.79 in [20.07 mm]
Weight	0.08 lbs [37.65 g]

Description	Connector 1	Connector 2
Type	4.3-10 Female	NEX10 Female
Polarity	Standard	Standard

Low PIM 4.3-10 Female to NEX10 Female Adapter



PE91702

Material Specifications

Description	Connector 1		Connector 2	
	Material	Plating	Material	Plating
Type	4.3-10 Female		NEX10 Female	
Contact	Beryllium Copper	Silver	Beryllium Copper	Silver
Insulation	PTFE		PTFE	
Outer Conductor	Brass	Tri-Metal	Brass	Tri-Metal
Body	Brass	Tri-Metal	Brass	Tri-Metal

Environmental Specifications

Temperature

Operating Range -40 to +155 °C

Compliance Certifications (see [product page](#) for current document)

Plotted and Other Data

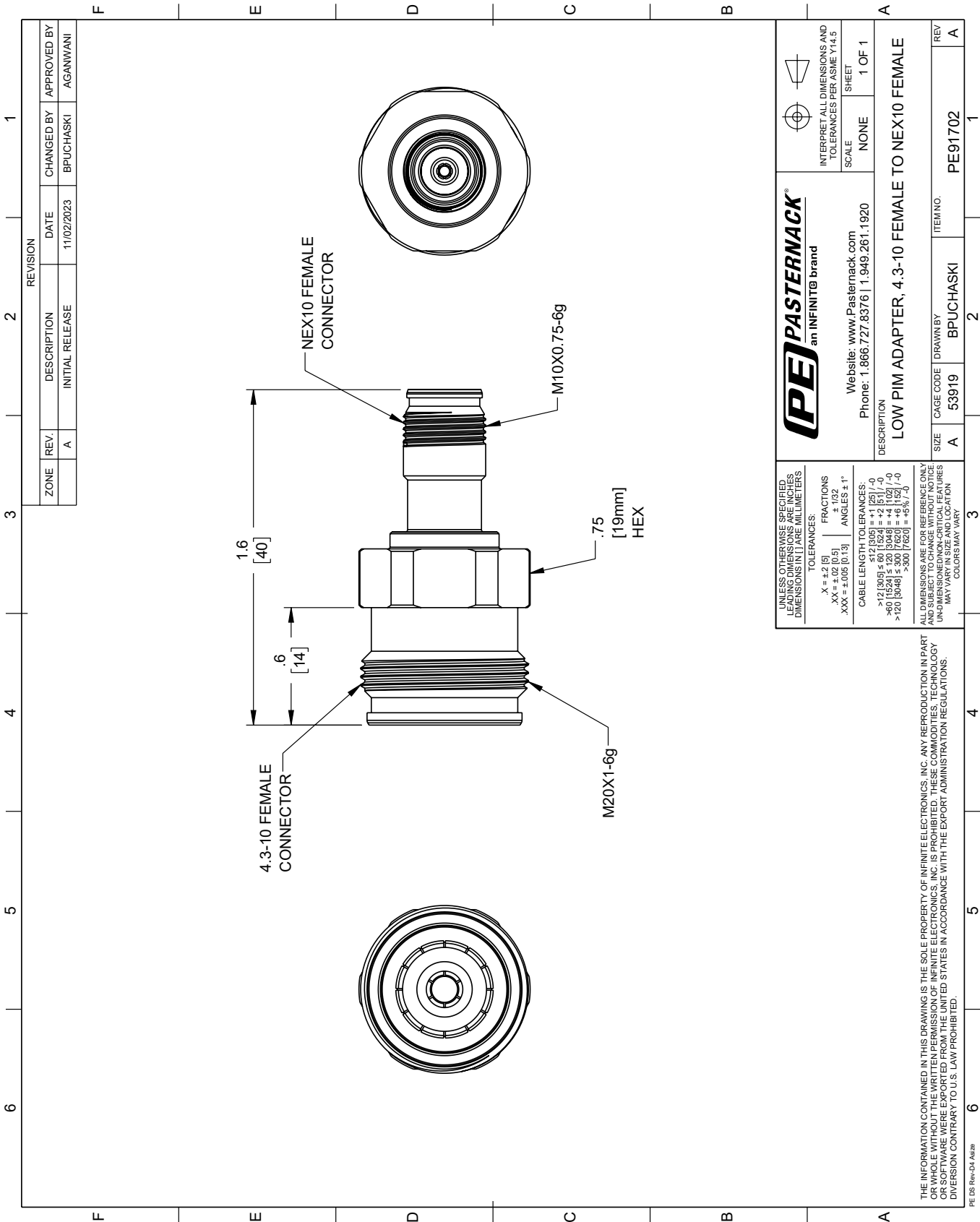
Low PIM 4.3-10 Female to NEX10 Female Adapter from Pasternack Enterprises has same day shipment for domestic and International orders. Our RF, microwave and millimeter wave products maintain a 99.4% availability and are part of the broadest selection in the industry.

Click the following link (or enter part number in "SEARCH" on website) to obtain additional part information including price, inventory and certifications: [Low PIM 4.3-10 Female to NEX10 Female Adapter PE91702](#)

URL: <https://www.pasternack.com/low-pim-4.3-10-female-to-nex10-female-adapter-pe91702-p.aspx>

The information contained within this document is accurate to the best of our knowledge and representative of the part described herein. It may be necessary to make modifications to the part and/or the documentation of the part in order to implement improvements. Pasternack Enterprises reserves the right to make such changes as required. Unless otherwise stated, all specifications are nominal. Pasternack Enterprises does not make any representation or warranty regarding the suitability of the part described herein for any particular purpose, and Pasternack Enterprises does not assume liability arising out of the use of any part or document.

PE91702 CAD Drawing
Low PIM 4.3-10 Female to NEX10 Female Adapter



REVISION			
ZONE	REV.	DESCRIPTION	DATE
	A	INITIAL RELEASE	11/02/2023
			APPROVED BY
			BPUCHASKI
			AGANWANI

 		INTERPRET ALL DIMENSIONS AND TOLERANCES PER ASME Y14.5	
PE PASTERNAK® an INFINITE® brand		SCALE	SHEET
Website: www.Pasternack.com Phone: 1.866.727.8376 1.949.261.1920		NONE	1 OF 1
DESCRIPTION			
LOW PIM ADAPTER, 4.3-10 FEMALE TO NEX10 FEMALE			
SIZE	CAGE CODE	DRAWN BY	ITEM NO.
A	53919	BPUCHASKI	PE91702
REV			
A			

TOLERANCES:	
X = ±.015 [.5]	FRACTIONS
XX = ±.010 [.3]	ANGLES ± 1°
XXX = ±.005 [.13]	
CABLE LENGTH TOLERANCES:	
- >12 [3049] ± .02 [150] ± .1 [25] / -0	
- >12 [309] ± .02 [150] ± .1 [25] / -0	
- >12 [324] ± .12 [3048] ± .1 [102] / -0	
- >12 [3049] ± .02 [150] ± .1 [25] / -0	
- >12 [3049] ± .02 [150] ± .1 [25] / -0	
- >12 [3049] ± .02 [150] ± .1 [25] / -0	
- >12 [3049] ± .02 [150] ± .1 [25] / -0	
- >12 [3049] ± .02 [150] ± .1 [25] / -0	
- >12 [3049] ± .02 [150] ± .1 [25] / -0	
- >12 [3049] ± .02 [150] ± .1 [25] / -0	
- >12 [3049] ± .02 [150] ± .1 [25] / -0	
- >12 [3049] ± .02 [150] ± .1 [25] / -0	
- >12 [3049] ± .02 [150] ± .1 [25] / -0	
- >12 [3049] ± .02 [150] ± .1 [25] / -0	
- >12 [3049] ± .02 [150] ± .1 [25] / -0	
- >12 [3049] ± .02 [150] ± .1 [25] / -0	
- >12 [3049] ± .02 [150] ± .1 [25] / -0	
- >12 [3049] ± .02 [150] ± .1 [25] / -0	
- >12 [3049] ± .02 [150] ± .1 [25] / -0	
- >12 [3049] ± .02 [150] ± .1 [25] / -0	
- >12 [3049] ± .02 [150] ± .1 [25] / -0	
- >12 [3049] ± .02 [150] ± .1 [25] / -0	
- >12 [3049] ± .02 [150] ± .1 [25] / -0	
- >12 [3049] ± .02 [150] ± .1 [25] / -0	
- >12 [3049] ± .02 [150] ± .1 [25] / -0	
- >12 [3049] ± .02 [150] ± .1 [25] / -0	
- >12 [3049] ± .02 [150] ± .1 [25] / -0	
- >12 [3049] ± .02 [150] ± .1 [25] / -0	
- >12 [3049] ± .02 [150] ± .1 [25] / -0	
- >12 [3049] ± .02 [150] ± .1 [25] / -0	
- >12 [3049] ± .02 [150] ± .1 [25] / -0	
- >12 [3049] ± .02 [150] ± .1 [25] / -0	
- >12 [3049] ± .02 [150] ± .1 [25] / -0	
- >12 [3049] ± .02 [150] ± .1 [25] / -0	
- >12 [3049] ± .02 [150] ± .1 [25] / -0	
- >12 [3049] ± .02 [150] ± .1 [25] / -0	
- >12 [3049] ± .02 [150] ± .1 [25] / -0	
- >12 [3049] ± .02 [150] ± .1 [25] / -0	
- >12 [3049] ± .02 [150] ± .1 [25] / -0	
- >12 [3049] ± .02 [150] ± .1 [25] / -0	
- >12 [3049] ± .02 [150] ± .1 [25] / -0	
- >12 [3049] ± .02 [150] ± .1 [25] / -0	
- >12 [3049] ± .02 [150] ± .1 [25] / -0	
- >12 [3049] ± .02 [150] ± .1 [25] / -0	
- >12 [3049] ± .02 [150] ± .1 [25] / -0	
- >12 [3049] ± .02 [150] ± .1 [25] / -0	
- >12 [3049] ± .02 [150] ± .1 [25] / -0	
- >12 [3049] ± .02 [150] ± .1 [25] / -0	
- >12 [3049] ± .02 [150] ± .1 [25] / -0	
- >12 [3049] ± .02 [150] ± .1 [25] / -0	
- >12 [3049] ± .02 [150] ± .1 [25] / -0	
- >12 [3049] ± .02 [150] ± .1 [25] / -0	
- >12 [3049] ± .02 [150] ± .1 [25] / -0	
- >12 [3049] ± .02 [150] ± .1 [25] / -0	
- >12 [3049] ± .02 [150] ± .1 [25] / -0	
- >12 [3049] ± .02 [150] ± .1 [25] / -0	
- >12 [3049] ± .02 [150] ± .1 [25] / -0	
- >12 [3049] ± .02 [150] ± .1 [25] / -0	
- >12 [3049] ± .02 [150] ± .1 [25] / -0	
- >12 [3049] ± .02 [150] ± .1 [25] / -0	
- >12 [3049] ± .02 [150] ± .1 [25] / -0	
- >12 [3049] ± .02 [150] ± .1 [25] / -0	
- >12 [3049] ± .02 [150] ± .1 [25] / -0	
- >12 [3049] ± .02 [150] ± .1 [25] / -0	
- >12 [3049] ± .02 [150] ± .1 [25] / -0	
- >12 [3049] ± .02 [150] ± .1 [25] / -0	
- >12 [3049] ± .02 [150] ± .1 [25] / -0	
- >12 [3049] ± .02 [150] ± .1 [25] / -0	
- >12 [3049] ± .02 [150] ± .1 [25] / -0	
- >12 [3049] ± .02 [150] ± .1 [25] / -0	
- >12 [3049] ± .02 [150] ± .1 [25] / -0	
- >12 [3049] ± .02 [150] ± .1 [25] / -0	
- >12 [3049] ± .02 [150] ± .1 [25] / -0	
- >12 [3049] ± .02 [150] ± .1 [25] / -0	
- >12 [3049] ± .02 [150] ± .1 [25] / -0	
- >12 [3049] ± .02 [150] ± .1 [25] / -0	
- >12 [3049] ± .02 [150] ± .1 [25] / -0	
- >12 [3049] ± .02 [150] ± .1 [25] / -0	
- >12 [3049] ± .02 [150] ± .1 [25] / -0	
- >12 [3049] ± .02 [150] ± .1 [25] / -0	
- >12 [3049] ± .02 [150] ± .1 [25] / -0	
- >12 [3049] ± .02 [150] ± .1 [25] / -0	
- >12 [3049] ± .02 [150] ± .1 [25] / -0	
- >12 [3049] ± .02 [150] ± .1 [25] / -0	
- >12 [3049] ± .02 [150] ± .1 [25] / -0	
- >12 [3049] ± .02 [150] ± .1 [25] / -0	
- >12 [3049] ± .02 [150] ± .1 [25] / -0	
- >12 [3049] ± .02 [150] ± .1 [25] / -0	
- >12 [3049] ± .02 [150] ± .1 [25] / -0	
- >12 [3049] ± .02 [150] ± .1 [25] / -0	
- >12 [3049] ± .02 [150] ± .1 [25] / -0	
- >12 [3049] ± .02 [150] ± .1 [25] / -0	
- >12 [3049] ± .02 [150] ± .1 [25] / -0	
- >12 [3049] ± .02 [150] ± .1 [25] / -0	
- >12 [3049] ± .02 [150] ± .1 [25] / -0	
- >12 [3049] ± .02 [150] ± .1 [25] / -0	
- >12 [3049] ± .02 [150] ± .1 [25] / -0	
- >12 [3049] ± .02 [150] ± .1 [25] / -0	
- >12 [3049] ± .02 [150] ± .1 [25] / -0	
- >12 [3049] ± .02 [150] ± .1 [25] / -0	
- >12 [3049] ± .02 [150] ± .1 [25] / -0	
- >12 [3049] ± .02 [150] ± .1 [25] / -0	
- >12 [3049] ± .02 [150] ± .1 [25] / -0	
- >12 [3049] ± .02 [150] ± .1 [25] / -0	
- >12 [3049] ± .02 [150] ± .1 [25] / -0	
- >12 [3049] ± .02 [150] ± .1 [25] / -0	
- >12 [3049] ± .02 [150] ± .1 [25] / -0	
- >12 [3049] ± .02 [150] ± .1 [25] / -0	
- >12 [3049] ± .02 [150] ± .1 [25] / -0	
- >12 [3049] ± .02 [150] ± .1 [25] / -0	
- >12 [3049] ± .02 [150] ± .1 [25] / -0	
- >12 [3049] ± .02 [150] ± .1 [25] / -0	
- >12 [3049] ± .02 [150] ± .1 [25] / -0	
- >12 [3049] ± .02 [150] ± .1 [25] / -0	
- >12 [3049] ± .02 [150] ± .1 [25] / -0	
- >12 [3049] ± .02 [150] ± .1 [25] / -0	
- >12 [3049] ± .02 [150] ± .1 [25] / -0	
- >12 [3049] ± .02 [150] ± .1 [25] / -0	
- >12 [3049] ± .02 [150] ± .1 [25] / -0	
- >12 [3049] ± .02 [150] ± .1 [25] / -0	
- >12 [3049] ± .02 [150] ± .1 [25] / -0	
- >12 [3049] ± .02 [150] ± .1 [25] / -0	
- >12 [3049] ± .02 [150] ± .1 [25] / -0	
- >12 [3049] ± .02 [150] ± .1 [25] / -0	
- >12 [3049] ± .02 [150] ± .1 [25] / -0	
- >12 [3049] ± .02 [150] ± .1 [25] / -0	
- >12 [3049] ± .02 [150] ± .1 [25] / -0	
- >12 [3049] ± .02 [150] ± .1 [25] / -0	
- >12 [3049] ± .02 [150] ± .1 [25] / -0	
- >12 [3049] ± .02 [150] ± .1 [25] / -0	
- >12 [3049] ± .02 [150] ± .1 [25] / -0	
- >12 [3049] ± .02 [150] ± .1 [25] / -0	
- >12 [3049] ± .02 [150] ± .1 [25] / -0	
- >12 [3049] ± .02 [150] ± .1 [25] / -0	
- >12 [3049] ± .02 [150] ± .1 [25] / -0	
- >12 [3049] ± .02 [150] ± .1 [25] / -0	
- >12 [3049] ± .02 [150] ± .1 [25] / -0	
- >12 [3049] ± .02 [150] ± .1 [25] / -0	
- >12 [3049] ± .02 [150] ± .1 [25] / -0	
- >12 [3049] ± .02 [150] ± .1 [25] / -0	
- >12 [3049] ± .02 [150] ± .1 [25] / -0	
- >12 [3049] ± .02 [150] ± .1 [25] / -0	
- >12 [3049] ± .02 [150] ± .1 [25] / -0	
- >12 [3049] ± .02 [150] ± .1 [25] / -0	
- >12 [3049] ± .02 [150] ± .1 [25] / -0	
- >12 [3049] ± .02 [150] ± .1 [25] / -0	
- >12 [3049] ± .02 [150] ± .1 [25] / -0	
- >12 [3049] ± .02 [150] ± .1 [25] / -0	
- >12 [3049] ± .02 [150] ± .1 [25] / -0	
- >12 [3049] ± .02 [150] ± .1 [25] / -0	
- >12 [3049] ± .02 [150] ± .1 [25] / -0	
- >12 [3049] ± .02 [150] ± .1 [25] / -0	
- >12 [3049] ± .02 [150] ± .1 [25] / -0	
- >12 [3049] ± .02 [150] ± .1 [25] / -0	
- >12 [3049] ± .02 [150] ± .1 [25] / -0	
- >12 [3049] ± .	

UNLESS OTHERWISE SPECIFIED, ALL DIMENSIONS ARE IN INCHES. DIMENSIONS IN [] ARE IN MILLIMETERS.

TOLERANCES:

X = ±.2 [5]	FRACTIONS ± 1/32
.XX = ±.02 [0.5]	ANGLES ± 1°
.XXX = ±.005 [0.13]	

CABLE LENGTH TOLERANCES:

>12 [305] ≤ 60 [1524] = ±.125 [-0]
>60 [1524] ≤ 120 [3048] = ±.102 [-0]
>120 [3048] ≤ 300 [7620] = ±.125 [-0]
>300 [7620] = ±.15 [-0]

ALL DIMENSIONS ARE FOR REFERENCE ONLY. UNLESS OTHERWISE SPECIFIED, DIMENSIONS ARE IN INCHES. DIMENSIONS IN [] ARE IN MILLIMETERS. DIMENSIONS MAY VARY.

THE INFORMATION CONTAINED IN THIS DRAWING IS THE SOLE PROPERTY OF INFINITE ELECTRONICS, INC. ANY REPRODUCTION IN PART OR WHOLE WITHOUT THE WRITTEN PERMISSION OF INFINITE ELECTRONICS, INC. IS PROHIBITED. THESE COMMODITIES, TECHNOLOGY OR SOFTWARE WERE EXPORTED FROM THE UNITED STATES IN ACCORDANCE WITH THE EXPORT ADMINISTRATION REGULATIONS. DIVISION CONTRARY TO U.S. LAW PROHIBITED.

PE 09 Rev-D4 Addn