

Low PIM 2.2-5 Male to 3.5mm Female Adapter

PE91697



Configuration

- 2.2-5 Male Connector 1
- 3.5mm Female Connector 2
- 50 Ohm
- Low PIM Design
- Straight Body Geometry

Features

- Typical PIM levels of -160 dBc
- Silver Plated Beryllium Copper Contact
- Max of VSWR 1.15:1 at 3GHz, Max of VSWR 1.25:1 at 6GHz

Applications

- Allows Connection Between Series
- General Purpose Test
- Low PIM Applications

Description

Pasternack's PE91697 2.2-5 male to 3.5mm female adapter is part of our full line of RF components available for same-day shipping. Our 2.2-5 to 3.5mm adapter has a male to female gender configuration in a low PIM design. PE91697 2.2-5 male to 3.5mm female adapter operates to 8 GHz. The Pasternack adapter provides a passive intermodulation of -160 dBc typical.

RF adapters are often used to enable connections between two connector types that would otherwise not mate. Certain adapter configurations can also be used to protect connectors on expensive equipment where the number of connect/disconnect cycles is high. An RF, microwave or millimeter wave adapter is connected to the equipment, and the commonly changed connection is made with the adapter which can be easily replaced when it wears out after high usage; such adapters are referred to as connector savers. Pasternack also offers bulkhead, panel mount, hermetically sealed, reverse polarity, and isolated ground adapter varieties to serve all of your RF, microwave and millimeter wave needs.

Electrical Specifications

Description	Minimum	Typical	Maximum	Units
Frequency Range	DC		8	GHz
Impedance		50 Ohm		
Passive Intermodulation		-160		dBc
Dielectric Withstanding Voltage (AC)			750	Vrms

Mechanical Specifications

Size

Length	1.19 in [30.23 mm]
Width	0.63 in [16.00 mm]
Height	0.69 in [17.53 mm]
Weight	0.05 lbs [24.49 g]

Description	Connector 1	Connector 2
Type	2.2-5 Male	3.5mm Female
Polarity	Standard	Standard

Low PIM 2.2-5 Male to 3.5mm Female Adapter



PE91697

Material Specifications

Description	Connector 1		Connector 2	
	Material	Plating	Material	Plating
Type	2.2-5 Male		3.5mm Female	
Contact	Beryllium Copper	Silver	Beryllium Copper	Silver
Insulation	PTFE		PTFE	
Outer Conductor			Brass	Tri-Metal
Body	Brass	Tri-Metal	Brass	Tri-Metal
Coupling Nut	Brass	Tri-Metal		

Environmental Specifications

Temperature

Operating Range -40 to +155 °C

Compliance Certifications (see [product page](#) for current document)

Plotted and Other Data

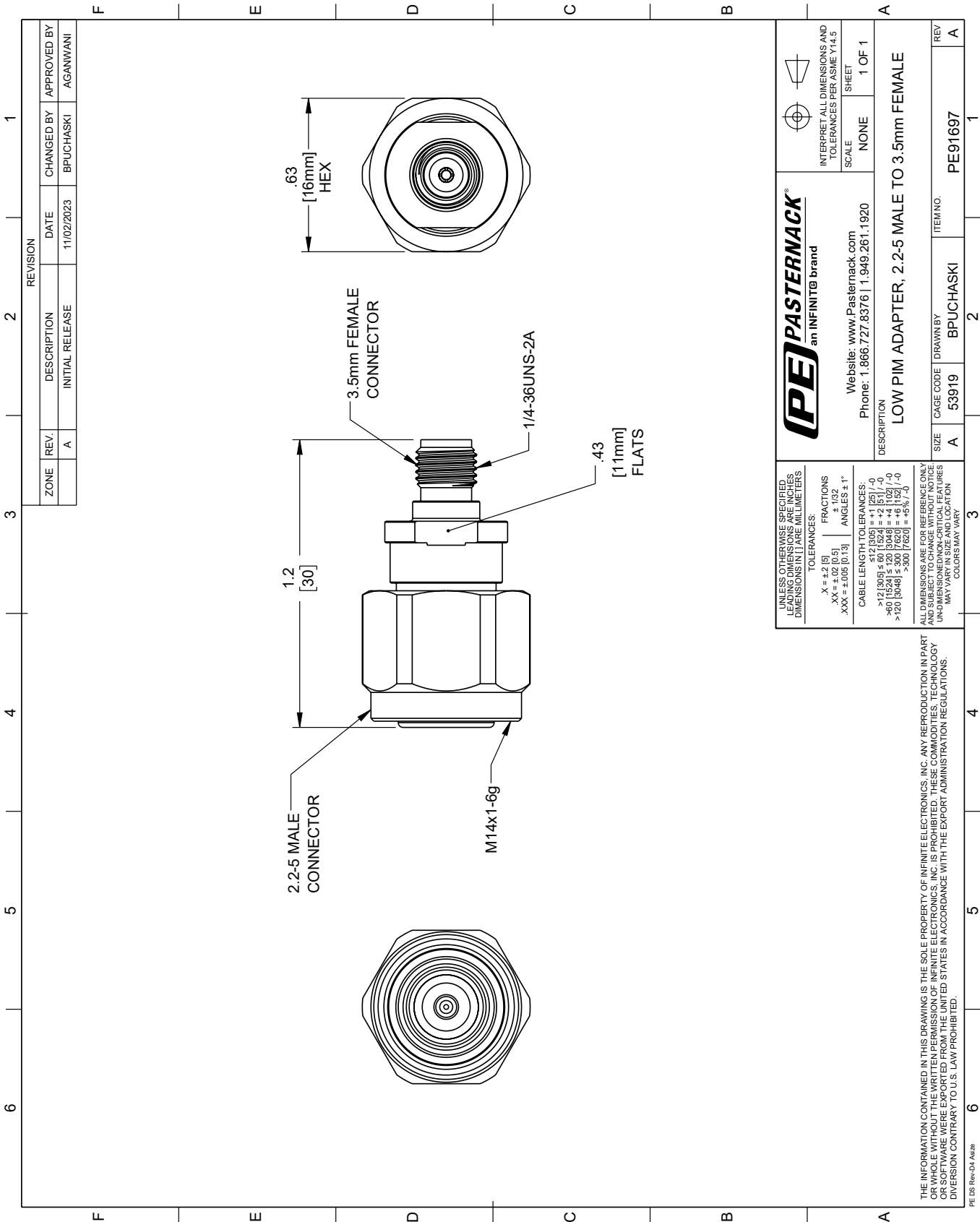
Low PIM 2.2-5 Male to 3.5mm Female Adapter from Pasternack Enterprises has same day shipment for domestic and International orders. Our RF, microwave and millimeter wave products maintain a 99.4% availability and are part of the broadest selection in the industry.

Click the following link (or enter part number in "SEARCH" on website) to obtain additional part information including price, inventory and certifications: [Low PIM 2.2-5 Male to 3.5mm Female Adapter PE91697](#)

URL: <https://www.pasternack.com/low-pim-2.2-5-male-to-3.5mm-female-adapter-pe91697-p.aspx>

The information contained within this document is accurate to the best of our knowledge and representative of the part described herein. It may be necessary to make modifications to the part and/or the documentation of the part in order to implement improvements. Pasternack Enterprises reserves the right to make such changes as required. Unless otherwise stated, all specifications are nominal. Pasternack Enterprises does not make any representation or warranty regarding the suitability of the part described herein for any particular purpose, and Pasternack Enterprises does not assume liability arising out of the use of any part or document.

PE91697 CAD Drawing
Low PIM 2.2-5 Male to 3.5mm Female Adapter



UNLESS OTHERWISE SPECIFIED, LEADING DIMENSIONS ARE IN INCHES. DIMENSIONS IN [] ARE IN MILLIMETERS.		PE PASTERNAK an INFINITI® brand		INTERPRET ALL DIMENSIONS AND TOLERANCES PER ASME Y14.5	
TOLERANCES:		Website: www.Pasternack.com		SCALE	
.X = ±.2 [5]		Phone: 1.866.727.8376 1.949.261.1920		NONE	
.XX = ±.02 [0.5]				SHEET	
.XXX = ±.005 [0.13]				1 OF 1	
ANGLES ± 1°					
CABLE LENGTH TOLERANCES:		DESCRIPTION			
>12 [305] ≤ 60 [1524] = ±.1 [25] / -0		LOW PIM ADAPTER, 2.2-5 MALE TO 3.5mm FEMALE			
>60 [1524] ≤ 120 [3048] = ±.1 [25] / -0					
>120 [3048] ≤ 300 [7620] = ±.1 [25] / -0					
>300 [7620] = ±.1 [25] / -0					
ALL DIMENSIONS ARE FOR REFERENCE ONLY. UNLESS OTHERWISE SPECIFIED, DIMENSIONS MAY VARY IN SIZE AND LOCATION. COLORS MAY VARY.		SIZE		REV	
		A		A	
		CAGE CODE		ITEM NO.	
		53919		PE91697	
		DRAWN BY			
		BPUCHASKI			