

Low PIM SC Female to N Male Adapter

PE91695



Configuration

- SC Female Connector 1
- N Male Connector 2
- 50 Ohm
- Low PIM Design
- Straight Body Geometry

Features

- Typical PIM levels of -160 dBc
- Silver Plated Beryllium Copper Contact
- Max of VSWR 1.15:1 at 3GHz, Max of VSWR 1.25:1 at 7.5GHz

Applications

- Allows Connection Between Series
- General Purpose Test
- Low PIM Applications

Description

Pasternack's PE91695 SC female to type N male adapter is part of our full line of RF components available for same-day shipping. Our SC to type N adapter has a female to male gender configuration in a low PIM design. PE91695 SC female to type N male adapter operates to 7.5 GHz. The Pasternack adapter provides a passive intermodulation of -160 dBc typical.

RF adapters are often used to enable connections between two connector types that would otherwise not mate. Certain adapter configurations can also be used to protect connectors on expensive equipment where the number of connect/disconnect cycles is high. An RF, microwave or millimeter wave adapter is connected to the equipment, and the commonly changed connection is made with the adapter which can be easily replaced when it wears out after high usage; such adapters are referred to as connector savers. Pasternack also offers bulkhead, panel mount, hermetically sealed, reverse polarity, and isolated ground adapter varieties to serve all of your RF, microwave and millimeter wave needs.

Electrical Specifications

Description	Minimum	Typical	Maximum	Units
Frequency Range	DC		7.5	GHz
Impedance		50 Ohm		
Passive Intermodulation		-160		dBc
Dielectric Withstanding Voltage (AC)			1,500	Vrms

Mechanical Specifications

Size

Length	1.67 in [42.42 mm]
Width	0.79 in [20.07 mm]
Height	0.85 in [21.59 mm]
Weight	0.10 lbs [47.17 g]

Description	Connector 1	Connector 2
Type	SC Female	N Male
Polarity	Standard	Standard

Low PIM SC Female to N Male Adapter

PE91695



Material Specifications

Description	Connector 1		Connector 2	
	Material	Plating	Material	Plating
Type	SC Female		N Male	
Contact	Beryllium Copper	Silver	Beryllium Copper	Silver
Insulation	PTFE		PTFE	
Outer Conductor	Beryllium Copper	Silver		
Body	Brass	Tri-Metal	Brass	Tri-Metal
Coupling Nut			Brass	Tri-Metal

Environmental Specifications

Temperature

Operating Range -40 to +155 °C

Environmental Specification Notes:
IEC 61169-4/21

Compliance Certifications (see [product page](#) for current document)

Plotted and Other Data

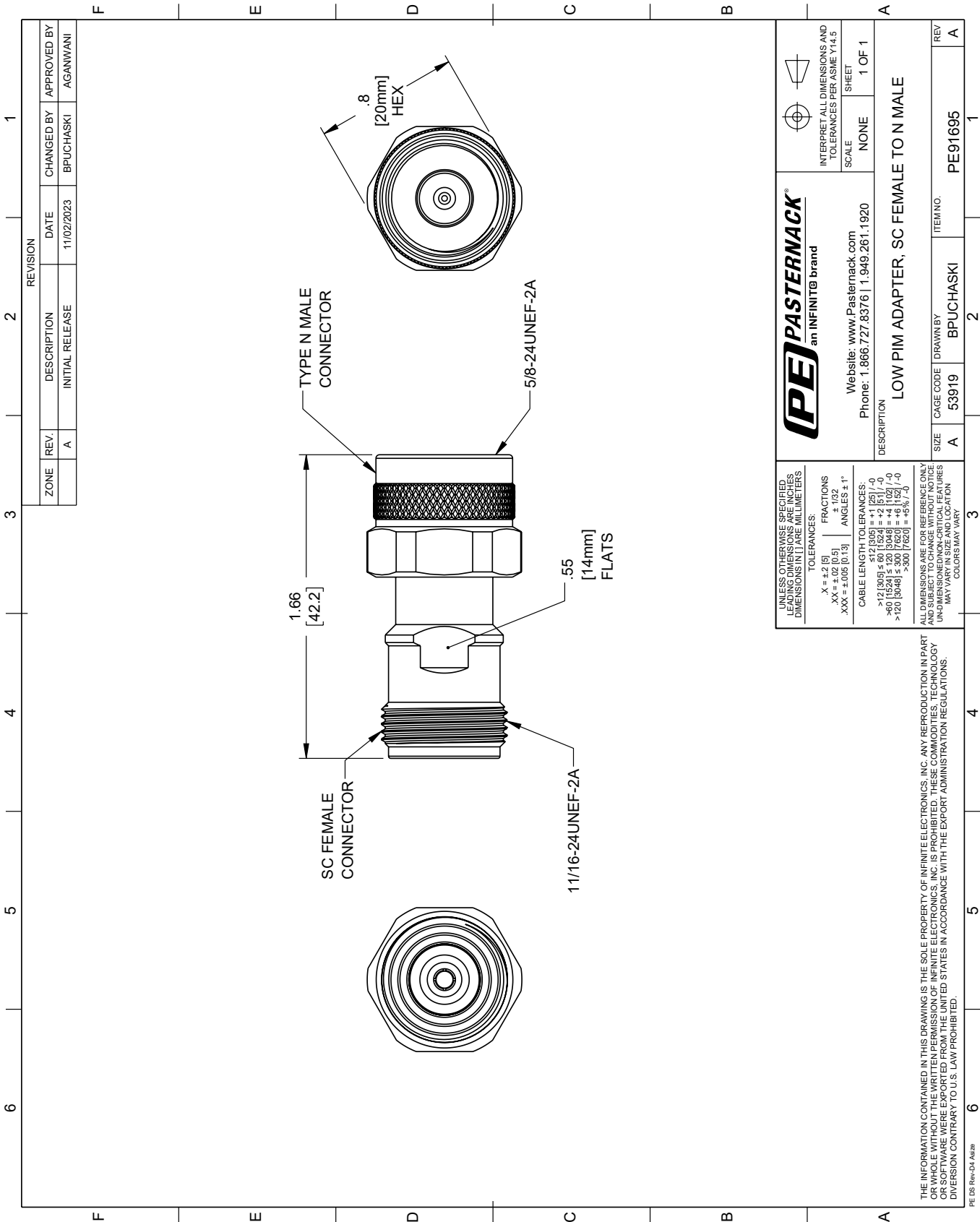
Low PIM SC Female to N Male Adapter from Pasternack Enterprises has same day shipment for domestic and International orders. Our RF, microwave and millimeter wave products maintain a 99.4% availability and are part of the broadest selection in the industry.

Click the following link (or enter part number in "SEARCH" on website) to obtain additional part information including price, inventory and certifications: [Low PIM SC Female to N Male Adapter PE91695](#)

URL: <https://www.pasternack.com/low-pim-sc-female-to-n-male-adapter-pe91695-p.aspx>

The information contained within this document is accurate to the best of our knowledge and representative of the part described herein. It may be necessary to make modifications to the part and/or the documentation of the part in order to implement improvements. Pasternack Enterprises reserves the right to make such changes as required. Unless otherwise stated, all specifications are nominal. Pasternack Enterprises does not make any representation or warranty regarding the suitability of the part described herein for any particular purpose, and Pasternack Enterprises does not assume liability arising out of the use of any part or document.

PE91695 CAD Drawing
Low PIM SC Female to N Male Adapter



UNLESS OTHERWISE SPECIFIED, ALL DIMENSIONS ARE IN INCHES. DIMENSIONS IN [] ARE MILLIMETERS.		PE PASTERNAK an INFINITI® brand		INTERPRET ALL DIMENSIONS AND TOLERANCES PER ASME Y14.5	
TOLERANCES:		Website: www.Pasternack.com		SCALE: NONE	
.X = +.2 [-5]		Phone: 1.866.727.8376 1.949.261.1920		SHEET: 1 OF 1	
.XX = ±.02 [0.5]		DESCRIPTION: LOW PIM ADAPTER, SC FEMALE TO N MALE			
.XXX = ±.005 [0.13]					
ANGLES ± 1°					
CABLE LENGTH TOLERANCES:		SIZE: A		CAGE CODE: 53919	
>12 [305] ≤ 60 [1524] = +.12 [-5] / -0		DRAWN BY: BPUCHASKI		ITEM NO.: PE91695	
>60 [1524] ≤ 120 [3048] = +.11 [-2] / -0					
>120 [3048] ≤ 300 [7620] = +.12 [-2] / -0					
>300 [7620] ≤ 450 [11430] = +.15 [-3] / -0					
ALL DIMENSIONS ARE FOR REFERENCE ONLY. UNLESS OTHERWISE SPECIFIED, DIMENSIONS MAY VARY IN SIZE AND LOCATION. COLORS MAY VARY.		REV: A			