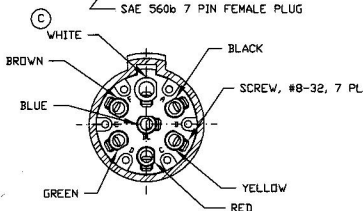
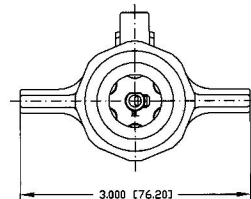
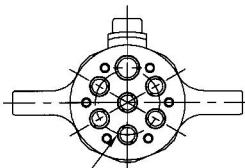
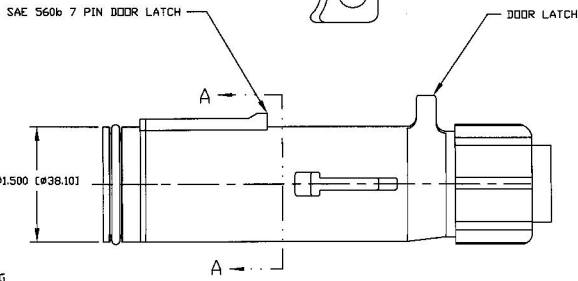
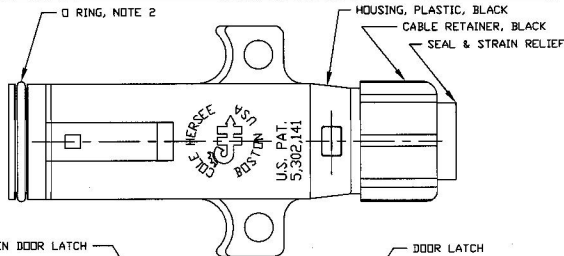


Revision Control Record

Rev.	Description of Change	ECN No.	Date
C	WHITE SCREW	00701	9/19/00



SECTION A-A

- NOTES:
1. ALL DIMENSIONS ARE REFERENCE ONLY
 2. O RING SEALS WHEN PLUG IS INSERTED INTO 12301 OR 12310 SOCKET
 3. WHITE TERMINALS WILL ACCEPT UP TO 8 GA (8.00 MM SQ) WIRE LEAD. BLACK, BROWN, GREEN, RED, AND YELLOW TERMINALS WILL ACCEPT UP TO 10 GA (5.0 MM SQ) WIRE LEADS.

Tolerances: Unless otherwise specifically noted, the following are default tolerances:
 • Plastic Machined Dimensions: $\pm .02^\circ$
 • Synthetic Machined Dimensions: $\pm .02^\circ$
 • Angles: Dimensional Call: $\pm 0.5^\circ$ Deg.
 • Holes: Refer to applicable English Dimensional Tolerance Tables
 • **NOTE:** All dimensions are dimensioned to the maximum material condition.

Dimensional Units: All dimensions are expressed in inches except those shown in brackets (mm) are expressed in millimeters.

ASME Y14.5M-2009: Minimum Tolerances Relatively Dimensioned, shown for draftsmen's purposes only.

PROPRIETARY INFORMATION: The Engineering Drawing, and the Information contained herein, is proprietary to Cole Hersee Company and may not be disclosed, reproduced, or in any way may be transferred or communicated to any other party without the express written consent of an authorized representative of Cole Hersee Company.

USER'S OBLIGATION: It is the responsibility of the individual using/ installing this drawing to ensure that the stated design variables have been agreed with the customer prior to the production of the final drawing. This is a NON-CERTIFIED DOCUMENT unless otherwise specifically noted.

NO COPY SCALE: Dimensional variation may occur during printing/ reproduction.

See For Specific Characteristic:

- ⊕ Critical Characteristics, relating to Safety and Regulatory Compliance
- ⊗ Significant Characteristics relating to Process Control (MPC)
- ⊕ Control Characteristics relating to Form - Fit - Function as defined by Cole Hersee Company and/or the Customer

Notes that the Identification of any Characteristics as being "Special" does not alter the requirements of ALL specified dimensions & tolerances used in this drawing.

Cole Hersee Co.
 20 Old Colony Ave., South Boston, MA, 02137
 Phone: 617-285-2100 Web: www.colehersee.com

Descriptions: 7 PIN PLUG

Drawing Part No.: 12311

Current Rev.: C