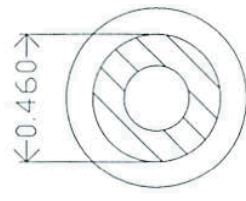
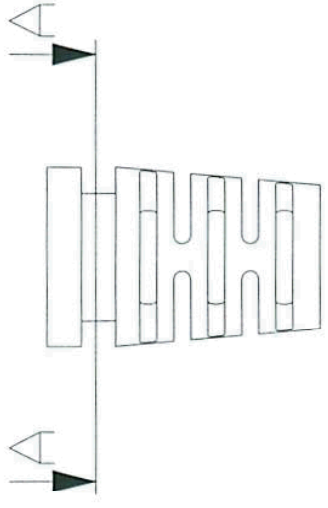
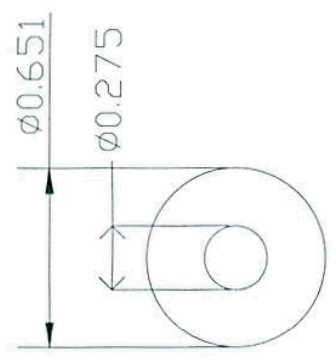
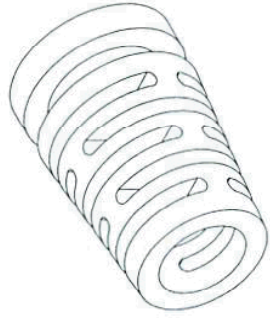
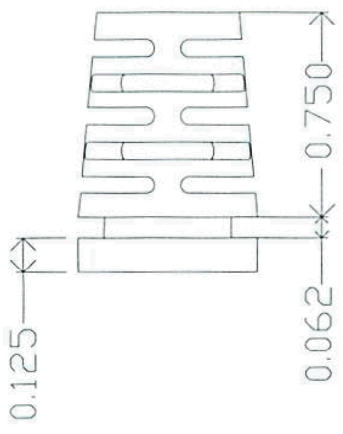


REVISIONS		DATE	APPROVED
ZONE	REV		



A-A



**CONTROLLED
DRAWING**
 MFG. ENG. *R. Ferro*
 CHECKED BY _____
 DATE *7/20/17*

MOLD MATERIAL, ISC P/N 5000091, PVC, M1472, Black, RoHS

Dimensions are subject to change PROPRIETARY AND CONFIDENTIAL THE INFORMATION CONTAINED IN THIS DRAWING IS THE SOLE PROPERTY OF ISC ENGINEERING. ANY REPRODUCTION IN PART OR AS A WHOLE WITHOUT THE WRITTEN PERMISSION OF ISC ENGINEERING IS PROHIBITED.		DIMENSIONS ARE IN INCHES TOLERANCES: FRACTIONAL ± ANGULAR: MACH ± BEND ± TWO PLACE DECIMAL ± THREE PLACE DECIMAL ± MATERIAL --- FINISH ---	NAME: R FIERRO DATE: 07/20/17 DRAWN: _____ CHECKED: _____ ENG APPR: _____ MFG APPR: _____ D.A.: _____ COMMENTS:	ISC Engineering 157 Stare St. Pomona, CA 91767 Ph: 909-596-3315 Fax: 909-596-3335 www.iscengineering.com www.overnatooling.com
APPLICATION: _____ USED ON NEXT ASSY: _____		SCALE: 2:1 WEIGHT: _____	Multiflex, Round SR 1461080-275-B-460-651-0 SIZE/DWG NO: 1467345 REV: _____	SHEET 1 OF 1