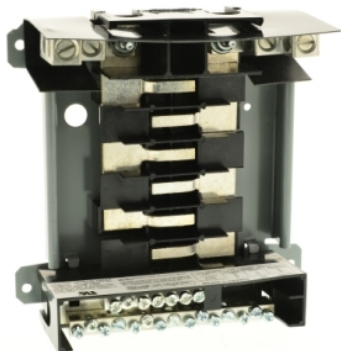


QON12L100SF

Load center interior, QO, mounting base, 1 phase, 12 spaces, 100A main lugs, OEM, subfeed lugs



Main

Marketing Trade Name	QO
Product Type	Mounting base

Complementary

Tightening Torque	Main lugs 50 lb.in, AWG 6...AWG 2/0, aluminium/copper
Rated Current	100 A
Number of Spaces	12
Maximum Number of Single Pole Circuits	12
Maximum Number of Tandem Breakers	0
Number of Phases	3 phase 1 phase
Voltage Rating	240 V AC 120/240 V AC
Wire Size	AWG 6...AWG 2/0 aluminium/copper
Enclosure Material	Cold rolled steel
Height	7.81 in (198.37 mm)
Width	6.05 in (153.67 mm)
Depth	0.92 in (23.37 mm)

Environment

Ambient Air Temperature for Operation	23 °F (-5 °C) 104 °F (40 °C)
---------------------------------------	---------------------------------

Ordering and shipping details

Category	US1DE3A00909
Discount Schedule	DE3A
GTIN	785901393948
Returnability	No
Country of origin	US

Packing Units

Unit Type of Package 1	PCE
Number of Units in Package 1	1
Package 1 Height	3.00 in (7.62 cm)
Package 1 Width	7.00 in (17.78 cm)
Package 1 Length	7.00 in (17.78 cm)
Package 1 Weight	34.08 oz (966.152 g)

Offer Sustainability

California proposition 65	WARNING: This product can expose you to chemicals including: Lead and lead compounds, which is known to the State of California to cause cancer and birth defects or other reproductive harm. For more information go to www.P65Warnings.ca.gov
REACH free of SVHC	Yes
EU RoHS Directive	Compliant EU RoHS Declaration
Toxic heavy metal free	Yes
Mercury free	Yes
China RoHS Regulation	China RoHS Declaration
RoHS exemption information	Yes

Contractual warranty

Warranty	18 months
----------	-----------