

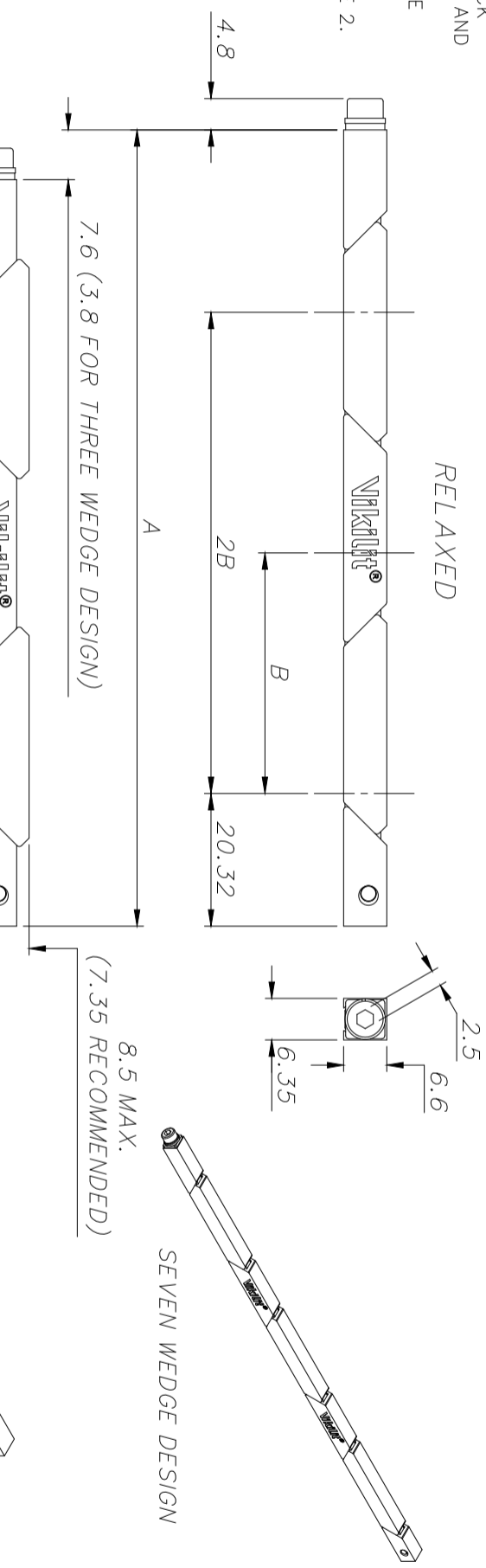
COMPUTER GENERATED DRAWING  
MANUAL CHANGES PROHIBITED

3X MOUNTING HOLES  
(SEE MOUNTING OPTIONS)

M3 HEX SOCKET HEAD SCREW  
RECOMMENDED TORQUE: 1.0Nm MAX.

RELAXED

- NOTES:**
- 1- ALL DIMENSIONS ARE IN MM.
  - 2- MATERIAL:
    - a) WEDGES AND SHAFT ARE AL6061-T6.
    - b) SCREW, SQUARE WASHER, LOCK WASHER, VISUAL INDICATOR AND SPIRAL PIN ARE CORROSION RESISTANT STEEL.
  - 3- FINISH:
    - a) WEDGES AND SHAFT: SEE TABLE 1.
    - b) SCREW, PLAIN WASHER, LOCK WASHER, VISUAL INDICATOR AND SPIRAL PIN: PASSIVATED IN ACCORDANCE WITH ASTM A967
  - 4- WEIGHT IS INDICATED IN TABLE 2.

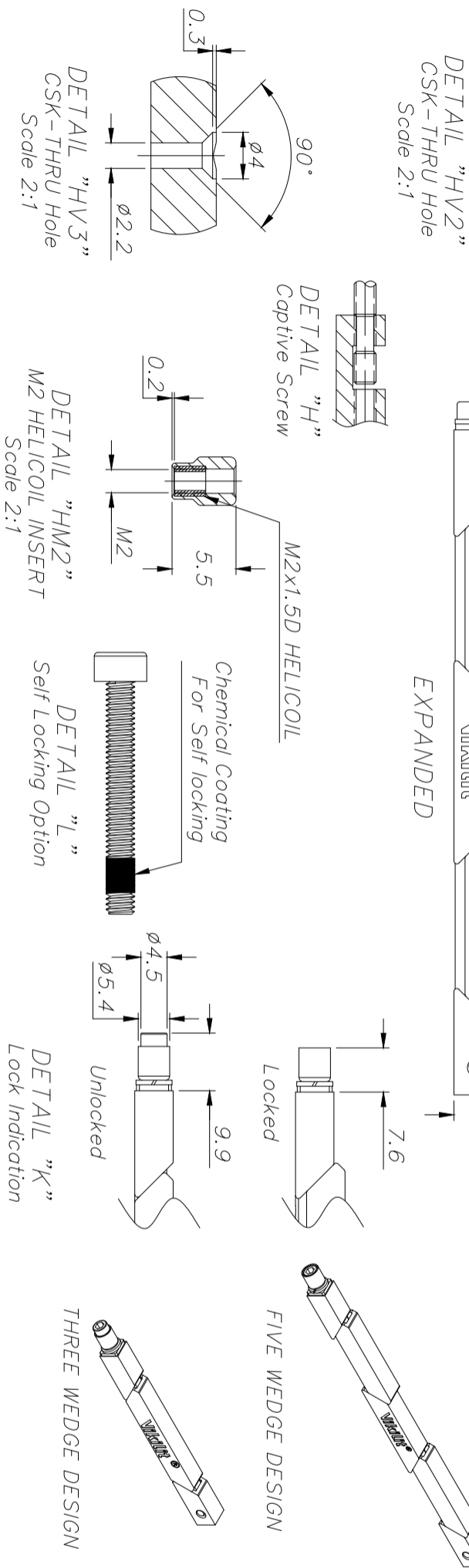


**TABLE 2**

ASSEMBLY LENGHT CODE	B	A±0.5	APPROX WEIGHT
072*	11.43	71.12	9
085*	17.78	83.82	10
099	24.13	96.52	11
112	30.48	109.22	12
125	36.83	121.92	14
138	43.18	134.62	15
150	49.53	147.32	16
163	55.88	160.02	17
175	62.23	172.72	19
187	68.58	185.42	20
200	74.93	198.12	21
212	81.28	210.82	22
**225	87.63	223.52	24

\*: THREE WEDGE DESIGN  
\*\*: SEVEN WEDGE DESIGN

**TABLE 1**



**Options:**

MANUFACTURER TYPE CODE \_\_\_\_\_

No Lock Indicator \_\_\_\_\_ (See Detail K) \_\_\_\_\_ B

Lock Indicator \_\_\_\_\_ (See Detail K) \_\_\_\_\_ K

Standard Screw \_\_\_\_\_ (See Detail H) \_\_\_\_\_ H

Captive Screw \_\_\_\_\_ (See Detail H) \_\_\_\_\_ H

Black Anodize per MIL-A-8625 Type II, Class 2 \_\_\_\_\_ A

Hard Black Anodize per MIL-A-8625 Type III, Class 2 \_\_\_\_\_ HA

Electroless Nickel per MIL-C-26074 Class 4, Grade B, Bright \_\_\_\_\_ EN

Chromate per MIL-DTL-5541, Class 1A, Yellow \_\_\_\_\_ C

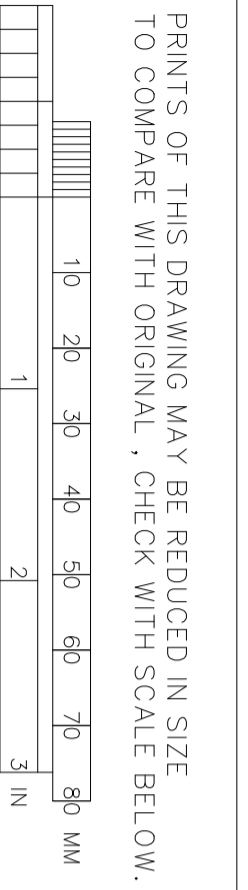
Assembly Length Code \_\_\_\_\_ (See Table 2) \_\_\_\_\_

Mounting Options

M2.5x0.45 Tapped hole	M25
M2x0.4 Tapped hole	M20
Thru hole (Detail 'HV2')	HV2
Thru hole (Detail 'HV3')	HV3
M2 HELICOIL INSERT	HM2
UNC 2-56 Tapped hole	UNC
UNC 0-80 Tapped hole	UNC

Self Locking Patch \_\_\_\_\_ (See Detail L) \_\_\_\_\_ L

None \_\_\_\_\_ N



PRINTS OF THIS DRAWING MAY BE REDUCED IN SIZE TO COMPARE WITH ORIGINAL, CHECK WITH SCALE BELOW.

UNLESS OTHERWISE SPECIFIED DIMENSIONS ARE IN MM

FRACTIONS ±	GENERAL ±	ANGLES ±	TOLERANCES ON
X.X ±	±0.2	2°	
X.XX ±	±0.10		

MATERIAL: REMOVE ALL BURRS

SEE NOTE 2

FINAL PROTECTIVE FINISH: SEE NOTE 3

CONTRACT NO.	---
DRAFTS	S.YILMAZ
DFT SUPV	S.YILMAZ
ENGR	S.YILMAZ
CHECK	M.YENER
APPD	EE
STAFF ENGR.	
QA/QC	
MFG(FAB)	
PROD ENG	

SIZE FSQM NO. A3

SCALE 1/1 UNIT mm

DWG NO. HARP-VK-102

REV. 10

**V635 SERIES**



Bilkent Cyberpark, Cyber Plaza  
B Blok, No:216 Çankaya/Ankara

ZONE	REV.	DESCRIPTION	DATE	APPROVED
1	1	PROTOTYPE	14.05.2019	
10	10	ADDED SEVEN WEDGE DESIGN FIGURE CHANGED TABLE 2	18.08.2022	

REVISIONS	DATE	APPROVED
1	14.05.2019	
10	18.08.2022	