

3D Structured Light Depth Sensing Module (SLiM™)

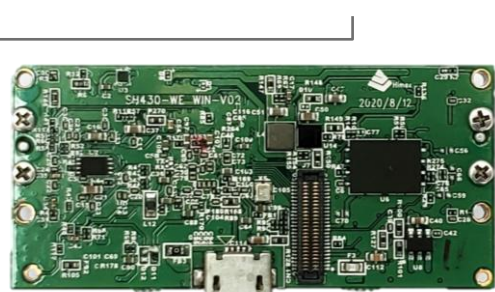
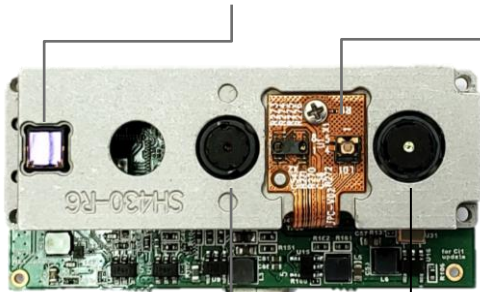
SLiM™ SH430UH-UC0 Module

Laser Projector & DOE

- WLO collimator with integrated DOE
- Glass broken protection

2D Flood Illuminator

- VCSEL



RGB Camera

- Integrated or Discrete
- Selected by customer

NIR Camera

- Global shutter

USB Connector

- USB 2.0

- Unique WLO technologies for integrated DOE and collimated lens
- Patented Glass Broken Detection (GBD)
- True 3D image quality
- Depth accuracy :RMSE < 0.3% @100cm
- Sunlight resistance: 80K Lux @100cm
- Temperature range :-20°C~60°C
- Compact module size
- Low power consumption
- Eye safety compliance with Class1, IEC-60825

Key Specifications	SH430UH-UC0
Module Size	54 x 18 x 11.3mm
Working Distance	40cm ~ 100cm
Depth Accuracy	< 3mm @100cm
NIR FOV	H50.7° V74.2°
Camera Resolution	RGB 1600*1200 @30fps NIR/3D 1280*800 @30fps
3D Dot Projector	VCSEL 30K dots
3D Depth Decoder	HV-II
Eye Safety	IEC60825-E3 2014 Class1
Operating System	Windows, Linux, Android
Interface	USB2.0*

*Please use a USB port that supports 2A current on host platform.

3D Structured Light Depth Sensing Module (SLiM™)

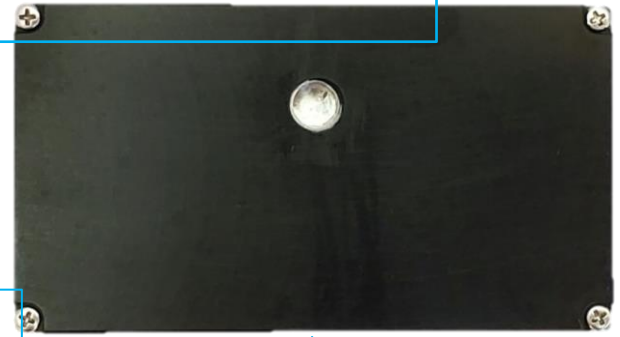
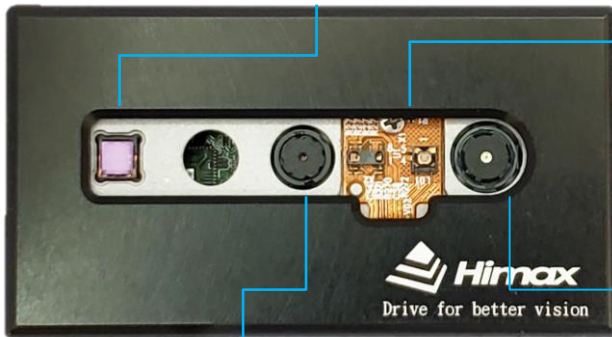
SLiM™ SH430UH-UC1 Module

Laser Projector & DOE

- WLO collimator with integrated DOE
- Glass broken protection

2D Flood Illuminator

- VCSEL



RGB Camera

- Integrated or Discrete
- Selected by customer

NIR Camera

- Global shutter

USB Connector

- USB 2.0

- Unique WLO technologies for integrated DOE and collimated lens
- Patented Glass Broken Detection (GBD)
- True 3D image quality
- Depth accuracy :RMSE < 0.3% @100cm
- Sunlight resistance: 80K Lux @100cm
- Temperature range :-20°C~60°C
- Compact module size
- Low power consumption
- Eye safety compliance with Class1, IEC-60825

Key Specifications	SH430UH-UC1
Module Size	66 x 36 x 22 mm
Working Distance	40cm ~ 100cm
Depth Accuracy	< 3mm @100cm
NIR FOV	H50.7° V74.2°
Camera Resolution	RGB 1600*1200 @30fps NIR/3D 1280*800 @30fps
3D Dot Projector	VCSEL 30K dots
3D Depth Decoder	HV-II
Eye Safety	IEC60825-E3 2014 Class1
Operating System	Windows, Linux, Android
Interface	USB2.0*

*Please use a USB port that supports 2A current on host platform.