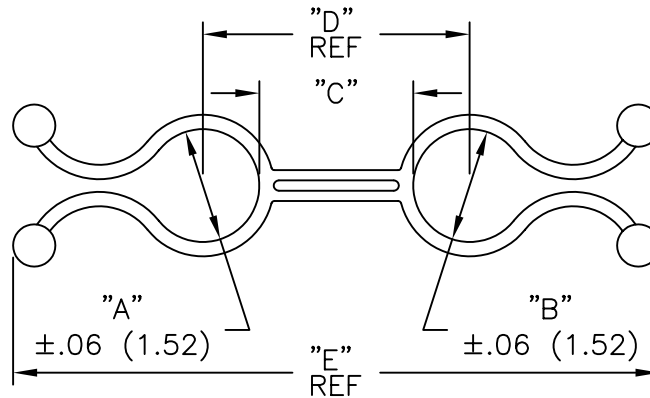


PART NO.	DIM. "A" BUNDLE DIA. RANGE	DIM. "B" BUNDLE DIA. RANGE	DIM. "C" BUNDLE TO BUNDLE	DIM. "D" REF. CENTER TO CENTER	DIM. "E" REF. OVER-ALL LENGTH
DTL2525-4-01	.20-.30 (5.08-7.62)	.20-.30 (5.08-7.62)	1/4 (6.35)	.50 (12.70)	1.92 (48.77)
DTL2525-12-01			3/4 (19.05)	1.00 (25.40)	2.42 (61.47)
DTL2525-20-01			1-1/4 (31.75)	1.50 (38.10)	2.92 (74.18)
DTL2525-28-01			1-3/4 (44.45)	2.00 (50.80)	3.42 (86.87)
DTL3535-4-01	.30-.40 (7.62-10.16)	.30-.40 (7.62-10.16)	1/4 (6.35)	.60 (15.24)	2.18 (55.37)
DTL3535-12-01			3/4 (19.05)	1.10 (27.94)	2.68 (68.07)
DTL3535-20-01			1-1/4 (31.75)	1.60 (40.64)	3.18 (80.77)
DTL3535-28-01			1-3/4 (44.45)	2.10 (53.34)	3.68 (93.47)
DTL4545-4-01	.40-.50 (10.16-12.70)	.40-.50 (10.16-12.70)	1/4 (6.35)	.70 (17.78)	2.42 (61.47)
DTL4545-12-01			3/4 (19.05)	1.20 (30.48)	2.92 (74.17)
DTL4545-20-01			1-1/4 (31.75)	1.70 (43.18)	3.42 (86.87)
DTL4545-28-01			1-3/4 (44.45)	2.20 (55.88)	3.92 (99.57)
DTL5555-4-01	.50-.60 (12.70-15.24)	.50-.60 (12.70-15.24)	1/4 (6.35)	.80 (20.32)	2.65 (67.31)
DTL5555-12-01			3/4 (19.05)	1.30 (33.02)	3.15 (80.01)
DTL5555-20-01			1-1/4 (31.75)	1.80 (45.72)	3.65 (92.71)
DTL5555-28-01			1-3/4 (44.45)	2.30 (58.42)	4.15 (105.41)
DTL6565-4-01	.60-.70 (15.24-17.79)	.60-.70 (15.24-17.79)	1/4 (6.35)	.90 (22.86)	2.88 (73.15)
DTL6565-12-01			3/4 (19.05)	1.40 (35.56)	3.38 (85.85)
DTL6565-20-01			1-1/4 (31.75)	1.90 (48.26)	3.88 (98.55)
DTL6565-28-01			1-3/4 (44.45)	2.40 (60.96)	4.38 (111.25)
DTL7575-4-01	.70-.80 (17.79-20.32)	.70-.80 (17.79-20.32)	1/4 (6.35)	1.00 (25.40)	3.10 (78.74)
DTL7575-12-01			3/4 (19.05)	1.50 (38.10)	3.60 (91.44)
DTL7575-20-01			1-1/4 (31.75)	2.00 (50.80)	4.10 (104.14)
DTL7575-28-01			1-3/4 (44.45)	2.50 (63.50)	4.60 (116.84)



NOTES:

- MATERIAL: NYLON 6/6 (RMS-01).  
FLAME RETARDANT NYLON (RMS-19),  
BY SPECIAL ORDER ONLY.
- COLOR: NATURAL.

C		ADDED RMS-19 TO MAT'L NOTE AND CHANGED FILE NO.	SM 09.17.01	TITLE: DUAL TWIST-LOCK		DWG IN IN (MM) FINAL			
B		TOL. FOR "B" WAS ±.06 (1.62)	PB 08.17.95	TOLERANCES UNLESS NOTED .XX=±.010 .XXX=±.005 FRAC=±1/64 ANG=±1°	FILE # DTL	DWN: P.B.	APP:	PART #	
A		CONVERTED TO ACAD	PB 03.10.95	MAT'L: SEE NOTES	RE: RICHCO, INC.	DT: 03-10-95	DT:	SEE TABLE	
REV		DESCRIPTION	ENGR DATE	RICHCO INC. PO BOX 804238, CHICAGO, 60680 (773) 539-4060				PRINT TYPE CA	