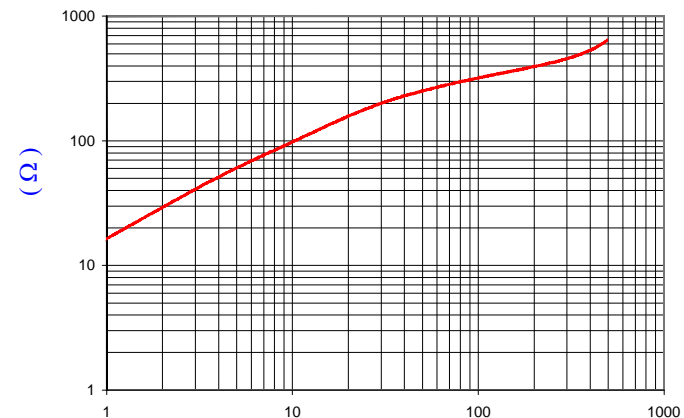


DETAIL "A"  
SCALE: 6:1

IMPEDANCE ( Z )			
Frequency	25 MHz	100 MHz	300 MHz
Nominal (REF)	170 Ω	320 Ω	450 Ω
Minimum	- Ω	256 Ω	- Ω

Z vs. FREQUENCY  
(REF. ONLY)



FREQUENCY (MHz)

AGILENT E4991A Impedance/Material Analyzer  
HP 16092A Test Fixture

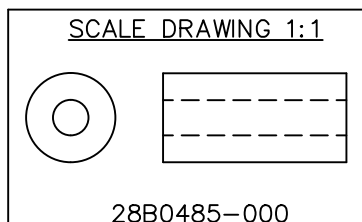
FERRITE CORE DIMENSIONS (SPEC):mm [Inches]

A	12.32 [.485]	+	0.20 [.008]
B	4.88 [.192]	+	0.13 [.005]
C	25.40 [1.000]	+	0.76 [.030]

WEIGHT/1000: 12.60 kgs 27.78 Lbs.

NOTES: UNLESS OTHERWISE SPECIFIED

1. COSMETIC SPECIFICATION REFER TO WI-QA-038.



DIMENSIONS ARE IN INCHES (mm).				This print is the property of Laird Tech. and is loaned in confidence subject to return upon request and with the understanding that no copies shall be made without the written consent of Laird Tech. All rights to design or invention are reserved.				
REV	DESCRIPTION	DATE	INT					
G	UPDATE THE LOGO	05/13/15	QIU	PROJECT/PART NUMBER: <b>28B0485-000</b>		REV	PART TYPE:	DRAWN BY:
F	UPDATE COMPANY LOGO	12/28/12	QIU			G	FERRITE CORE	DJB
E	UPDATE MIN Z SPEC & UPDATE COMPANY LOGO	05/27/07	JRK			DATE:	SCALE:	MATERIAL:
D	UPDATE MIN Z SPEC @100 MHZ	10/03/06	JRK			09/20/90	2:1	FERRITE
C	UPDATE PRINT FORMAT & Z SPECS ADD CURVE	03/04/03	JRK			CAD #	TOOL #	
B	UPDATE FORMAT	03/15/99	I.S.			28B0485-000-G	B0485	
A	ORIGINAL DRAFT	09/20/90	DJB					
REV	DESCRIPTION	DATE	INT					