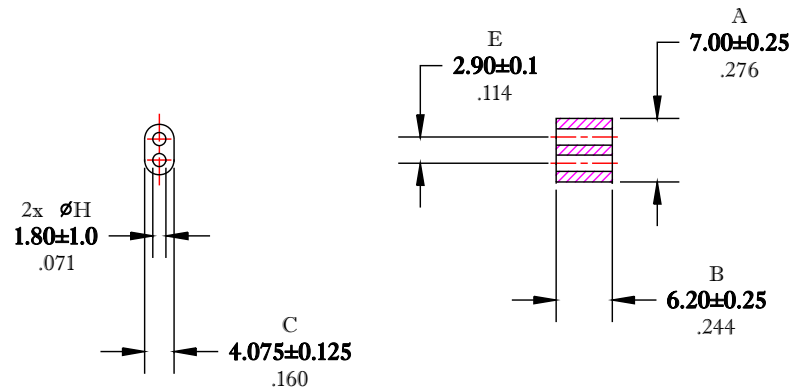


\*\* Not all features are shown in this drawing. For more detailed information, please contact your Fair-Rite representative.

UNCONTROLLED ~CATALOG~ DRAWING

SIZE	PART NO.	REV.
B	2873002402	~



DIMENSIONS  
**BOLD NUMBERS ARE IN MILLIMETERS**  
 LIGHT NUMBERS ARE IN INCHES


ELECTRICAL SPECIFICATIONS

Impedance (ohms) @ 25 MHz
60 Min.
N=1T-2H #24 INS., WL=1-1/4"

NOTES:

1 - BURNISH TO BREAK SHARP EDGES.

FR# 73

 <b>FAIR-RITE PRODUCTS CORP.</b>				
TITLE MULTI-APERTURE CORE				
DRAWN BY D. FOOTE	DATE 8/16/2019	SIZE B	PART NO. 2873002402	REV. ~
CHKD BY		APPRVD BY	SCALE NONE	SHEET 1 of 1