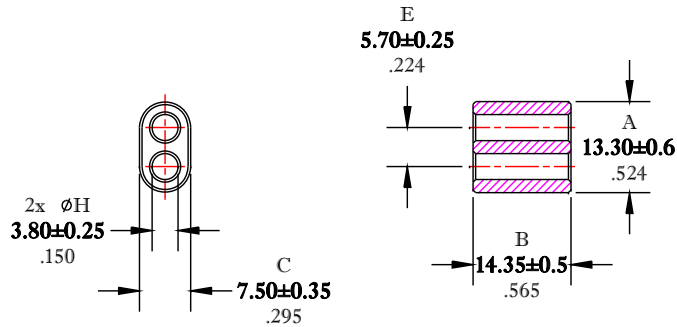


\*\* Not all features are shown in this drawing. For more detailed information, please contact your Fair-Rite representative.

UNCONTROLLED ~CATALOG~ DRAWING

|      |            |      |
|------|------------|------|
| SIZE | PART NO.   | REV. |
| B    | 2861000202 | ~    |



DIMENSIONS  
**BOLD NUMBERS ARE IN MILLIMETERS**  
 LIGHT NUMBERS ARE IN INCHES

| ELECTRICAL SPECIFICATIONS |                                  |                                   |                               |
|---------------------------|----------------------------------|-----------------------------------|-------------------------------|
| $A_L$ (nH)<br>@ 10 kHz    | $\tan \delta / \mu_i$<br>@ 1 MHz | $\tan \delta / \mu_i$<br>@ 10 MHz | Impedance (ohms)<br>@ 250 MHz |
| 320 Min.                  | $\leq 75 \times 10^{-6}$         | $\leq 350 \times 10^{-6}$         | 150 Min.                      |
| N=5T-2H #26 AWG           |                                  |                                   | N=1T-2H #22 AWG, WL=2-3/4"    |

NOTES:

1 - BURNISH TO BREAK SHARP EDGES.

FR# 61

|                           |                   |            |                        |           |
|---------------------------|-------------------|------------|------------------------|-----------|
| FAIR-RITE PRODUCTS CORP.  |                   |            |                        |           |
| TITLE MULTI-APERTURE CORE |                   |            |                        |           |
| DRAWN BY<br>D. FOOTE      | DATE<br>7/19/2019 | SIZE<br>B  | PART NO.<br>2861000202 | REV.<br>~ |
| CHKD BY                   |                   |            |                        |           |
| APPRVD BY                 |                   | SCALE NONE | SHEET 1 of 1           |           |