

# VIP-PA-PWR/20XOE/ 4,0M/1756 - Front adapter



2908865

<https://www.phoenixcontact.com/us/products/2908865>

Please be informed that the data shown in this PDF document is generated from our online catalog. Please find the complete data in the user documentation. Our general terms of use for downloads are valid.



VIP VARIOFACE front adapter, with assembled shielded round cable for ControlLogix<sup>®</sup> 1756 I/O, 1 x 20 single wires can be connected

## Your advantages

- Individual I/O modules lock to the controller for connection security
- Integrated lever aids in removal from I/O card
- Marking label can be attached
- 1:1 connection
- Open end at one end
- Individual wire marking: 1, 2, 3, 4, etc.
- Individual wires fitted with ferrules
- Shield connection: UL Type AWM, Style 1007 18 AWG (0.82 mm<sup>2</sup>) cable, black, 0.5 m length

## Commercial data

|                                      |                                |
|--------------------------------------|--------------------------------|
| Item number                          | 2908865                        |
| Packing unit                         | 1 pc                           |
| Note                                 | Made to order (non-returnable) |
| Sales key                            | C423                           |
| Product key                          | CK2311                         |
| GTIN                                 | 4063151465865                  |
| Weight per piece (including packing) | 1,374 g                        |
| Weight per piece (excluding packing) | 1,374 g                        |
| Customs tariff number                | 85444290                       |
| Country of origin                    | US                             |

2908865

<https://www.phoenixcontact.com/us/products/2908865>

## Technical data

### Product properties

|              |               |
|--------------|---------------|
| Product type | Front adapter |
|--------------|---------------|

### Insulation characteristics

|                      |    |
|----------------------|----|
| Overvoltage category | II |
| Pollution degree     | 2  |

### Electrical properties

|                                    |                               |
|------------------------------------|-------------------------------|
| Max. permissible operating voltage | 250 V AC/DC                   |
| Max. permissible current           | 3 A (per single wire at 60°C) |
|                                    | 4 A (per single wire at 40°C) |

### Supported controller ALLEN-BRADLEY ControlLogix

|                   |            |
|-------------------|------------|
| Suitable I/O card | 1756-IA16  |
|                   | 1756-IB16  |
|                   | 1756-OA16  |
|                   | 1756-OA8   |
|                   | 1756-OB16E |
|                   | 1756-OB8   |
|                   | 1756-OF4   |
|                   | 1756-OF8   |
|                   | 1756-CFM   |
|                   | 1756-IA8D  |
|                   | 1756-IC16  |
|                   | 1756-IG16  |
|                   | 1756-IN16  |
|                   | 1756-IV16  |
|                   | 1756-OA8D  |
|                   | 1756-OA8E  |
|                   | 1756-OC8   |
|                   | 1756-OF8H  |
|                   | 1756-OG16  |
|                   | 1756-ON8   |
| 1756-OV16E        |            |
| 1756-PLS          |            |

### Connection data

#### Controller level

|                   |   |
|-------------------|---|
| Connection method | Plug-in connection                      |
| Note              | Can be plugged onto 20-pos. I/O modules |

#### Field level

# VIP-PA-PWR/20XOE/ 4,0M/1756 - Front adapter



2908865

<https://www.phoenixcontact.com/us/products/2908865>

|                       |   |
|-----------------------|---|
| Connection method     | Single wires                                  |
| Number of connections | 20  |
| Number of positions   | 1   |
| Note                  | The wires are marked and fitted with ferrules |

## Dimensions

### Cable

|        |     |
|--------|-----|
| Length | 4 m |
|--------|-----|

### Cable/line

|   |                                |
|---|--------------------------------|
| Number of positions                           | 20                             |
| Shielded                                      | yes                            |
| Conductor type                                | Assembled shielded round cable |
| AWG signal line                               | 18                             |
| Conductor cross section                       | 20x 0.82 mm <sup>2</sup>       |
| Wire diameter incl. insulation                | 1.7 mm ±0.0254                 |
| External cable diameter                       | 12.75 mm ±0.3 mm               |
| Outer sheath, material                        | PVC                            |
| External sheath, color                        | gray                           |
| Conductor material                            | Tin-plated Cu litz wires       |
| Cable resistance                              | ≤ 40 Ω/km (20 °C)              |
| Insulation resistance                         | ≥ 20 MΩ*km (20 °C)             |
| Smallest bending radius, fixed installation   | 87.4 mm                        |
| Smallest bending radius, movable installation | 125 mm                         |
| Halogen-free                                  | no                             |
| Flame resistance                              | UL VW-1<br>CSA FT-1            |

### 1X1.0 [PVC]

|                                     |                   |
|-------------------------------------|-------------------|
| Cable type                          | 1X1.0 [PVC]       |
| ControlLogix <sup>®</sup> plug (1)  | () = black        |
| ControlLogix <sup>®</sup> plug (2)  | () = brown        |
| ControlLogix <sup>®</sup> plug (3)  | () = red          |
| ControlLogix <sup>®</sup> plug (4)  | () = orange       |
| ControlLogix <sup>®</sup> plug (5)  | () = yellow       |
| ControlLogix <sup>®</sup> plug (6)  | () = green        |
| ControlLogix <sup>®</sup> plug (7)  | () = blue         |
| ControlLogix <sup>®</sup> plug (8)  | () = violet       |
| ControlLogix <sup>®</sup> plug (9)  | () = gray         |
| ControlLogix <sup>®</sup> plug (10) | () = white        |
| ControlLogix <sup>®</sup> plug (11) | () = white-black  |
| ControlLogix <sup>®</sup> plug (12) | () = white-brown  |
| ControlLogix <sup>®</sup> plug (13) | () = white-red    |
| ControlLogix <sup>®</sup> plug (14) | () = white-orange |

2908865

<https://www.phoenixcontact.com/us/products/2908865>

|                                     |                   |
|-------------------------------------|-------------------|
| ControlLogix <sup>®</sup> plug (15) | () = white-yellow |
| ControlLogix <sup>®</sup> plug (16) | () = white-green  |
| ControlLogix <sup>®</sup> plug (17) | () = white-blue   |
| ControlLogix <sup>®</sup> plug (18) | () = white-violet |
| ControlLogix <sup>®</sup> plug (19) | () = white-gray   |
| ControlLogix <sup>®</sup> plug (20) | () = brown-black  |

## Environmental and real-life conditions

### Ambient conditions

|   |                  |
|---|------------------|
| Degree of protection (IP20)             | IP20             |
| Ambient temperature (operation)         | 0 °C ... 60 °C   |
| Ambient temperature (storage/transport) | -20 °C ... 70 °C |
| Altitude                                | < 2000 m         |

## Approvals

### UL data

|  |        |
|--|--------|
| Max. permissible relative humidity (operation) | < 95 % |
|--|--------|

## Standards and regulations

|                       |                |
|-----------------------|----------------|
| Standards/regulations | UL 61010-2-201 |
|-----------------------|----------------|

## Notes

|         |  |
|---------|--|
| General | For proper use, the specifications of the installation directive (see Downloads) must be observed. For applications or use with third-party products, the specifications, and the safety and warning instructions of the respective third-party manufacturer must also be met. |
|---------|--|

2908865

<https://www.phoenixcontact.com/us/products/2908865>

## Approvals

To download certificates, visit the product detail page: <https://www.phoenixcontact.com/us/products/2908865>



**UL Classified**

Approval ID: FILE E238705



**cUL Classified**

Approval ID: FILE E238705



**cUL Recognized**

Approval ID: FILE E196811



**UL Recognized**

Approval ID: FILE E196811

**cULus Classified**

**cULus Recognized**

# VIP-PA-PWR/20XOE/ 4,0M/1756 - Front adapter



2908865

<https://www.phoenixcontact.com/us/products/2908865>

## Classifications

### ECLASS

|             |          |
|-------------|----------|
| ECLASS-11.0 | 27242292 |
| ECLASS-12.0 | 27242292 |
| ECLASS-13.0 | 27242292 |

### ETIM

|          |          |
|----------|----------|
| ETIM 9.0 | EC002584 |
|----------|----------|

### UNSPSC

|             |          |
|-------------|----------|
| UNSPSC 21.0 | 32151600 |
|-------------|----------|

2908865

<https://www.phoenixcontact.com/us/products/2908865>

## Environmental product compliance

### EU RoHS

|   |                    |
|---|--------------------|
| Fulfills EU RoHS substance requirements | Yes, No exemptions |
|---|--------------------|

### China RoHS

|  |   |
|--|---|
| Environment friendly use period (EFUP) | EFUP-50   |
|  | An article-related China RoHS declaration table can be found in the download area for the respective article under "Manufacturer declaration". For all articles with EFUP-E, no China RoHS declaration table issued and required. |

### EU REACH SVHC

|                                     |                            |
|-------------------------------------|----------------------------|
| REACH candidate substance (CAS No.) | No substance above 0.1 wt% |
|-------------------------------------|----------------------------|

# VIP-PA-PWR/20XOE/ 4,0M/1756 - Front adapter



2908865

<https://www.phoenixcontact.com/us/products/2908865>

## Accessories

### KME - Cable marker carrier

0807083

<https://www.phoenixcontact.com/us/products/0807083>



Cable marker carrier, white, unlabeled, mounting type: Assembly with cable ties, cable diameter: > 5 mm, lettering field size: 20 x 8 mm

### UT 2,5 - Feed-through terminal block

3044076

<https://www.phoenixcontact.com/us/products/3044076>



Feed-through terminal block, nom. voltage: 1000 V, nominal current: 24 A, number of connections: 2, connection method: Screw connection, Rated cross section: 2.5 mm<sup>2</sup>, cross section: 0.14 mm<sup>2</sup> - 4 mm<sup>2</sup>, mounting type: NS 35/7,5, NS 35/15, color: gray



# VIP-PA-PWR/20XOE/ 4,0M/1756 - Front adapter

2908865

<https://www.phoenixcontact.com/us/products/2908865>

## PT 1,5/S - Feed-through terminal block

3208100

<https://www.phoenixcontact.com/us/products/3208100>



Feed-through terminal block, nom. voltage: 500 V, nominal current: 17.5 A, number of connections: 2, connection method: Push-in connection, 1 level, Rated cross section: 1.5 mm<sup>2</sup>, cross section: 0.14 mm<sup>2</sup> - 1.5 mm<sup>2</sup>, mounting type: NS 35/7,5, NS 35/15, color: gray

---

## PT 2,5 - Feed-through terminal block

3209510

<https://www.phoenixcontact.com/us/products/3209510>



Feed-through terminal block, nom. voltage: 800 V, nominal current: 24 A, number of connections: 2, number of positions: 1, connection method: Push-in connection, Rated cross section: 2.5 mm<sup>2</sup>, cross section: 0.14 mm<sup>2</sup> - 4 mm<sup>2</sup>, mounting type: NS 35/7,5, NS 35/15, color: gray

# VIP-PA-PWR/20XOE/ 4,0M/1756 - Front adapter

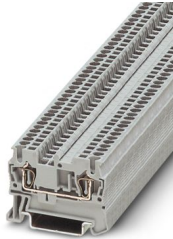
2908865

<https://www.phoenixcontact.com/us/products/2908865>

## ST 1,5 - Feed-through terminal block

3031076

<https://www.phoenixcontact.com/us/products/3031076>



Feed-through terminal block, nom. voltage: 500 V, nominal current: 17.5 A, number of connections: 2, connection method: Spring-cage connection, 1 level, Rated cross section: 1.5 mm<sup>2</sup>, cross section: 0.08 mm<sup>2</sup> - 1.5 mm<sup>2</sup>, mounting type: NS 35/7,5, NS 35/15, color: gray

---

## ST 2,5 - Feed-through terminal block

3031212

<https://www.phoenixcontact.com/us/products/3031212>



Feed-through terminal block, nom. voltage: 800 V, nominal current: 24 A, number of connections: 2, connection method: Spring-cage connection, Rated cross section: 2.5 mm<sup>2</sup>, cross section: 0.08 mm<sup>2</sup> - 4 mm<sup>2</sup>, mounting type: NS 35/7,5, NS 35/15, color: gray

# VIP-PA-PWR/20XOE/ 4,0M/1756 - Front adapter

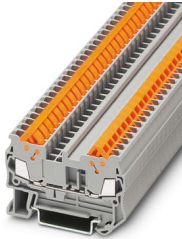
2908865

<https://www.phoenixcontact.com/us/products/2908865>

## QTC 1,5 - Feed-through terminal block

3205019

<https://www.phoenixcontact.com/us/products/3205019>



Feed-through terminal block, nom. voltage: 800 V, nominal current: 17.5 A, number of connections: 2, connection method: Quick connection, 1 level, Rated cross section: 1.5 mm<sup>2</sup>, cross section: 0.25 mm<sup>2</sup> - 1.5 mm<sup>2</sup>, mounting type: NS 35/7,5, NS 35/15, color: gray

---

## QTC 2,5 - Feed-through terminal block

3206416

<https://www.phoenixcontact.com/us/products/3206416>



Feed-through terminal block, nom. voltage: 800 V, nominal current: 24 A, number of connections: 2, connection method: Quick connection, 1 level, Rated cross section: 2.5 mm<sup>2</sup>, cross section: 0.5 mm<sup>2</sup> - 2.5 mm<sup>2</sup>, mounting type: NS 35/7,5, NS 35/15, color: gray

# VIP-PA-PWR/20XOE/ 4,0M/1756 - Front adapter

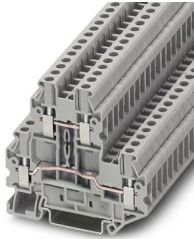
2908865

<https://www.phoenixcontact.com/us/products/2908865>

## UTT 2,5 - Double-level terminal block

3044636

<https://www.phoenixcontact.com/us/products/3044636>



Double-level terminal block, nom. voltage: 500 V, nominal current: 24 A, connection method: Screw connection, Rated cross section: 2.5 mm<sup>2</sup>, cross section: 0.14 mm<sup>2</sup> - 4 mm<sup>2</sup>, mounting type: NS 35/7,5, NS 35/15, color: gray

---

## PTTB 1,5/S - Double-level terminal block

3208511

<https://www.phoenixcontact.com/us/products/3208511>



Double-level terminal block, nom. voltage: 500 V, nominal current: 16 A, connection method: Push-in connection, 1st and 2nd level, Rated cross section: 1.5 mm<sup>2</sup>, cross section: 0.14 mm<sup>2</sup> - 1.5 mm<sup>2</sup>, mounting type: NS 35/7,5, NS 35/15, color: gray

# VIP-PA-PWR/20XOE/ 4,0M/1756 - Front adapter



2908865

<https://www.phoenixcontact.com/us/products/2908865>

## PTTB 2,5 - Double-level terminal block

3210567

<https://www.phoenixcontact.com/us/products/3210567>



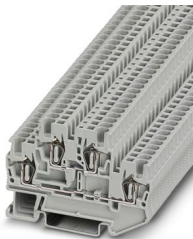
Double-level terminal block, nom. voltage: 500 V, nominal current: 22 A, connection method: Push-in connection, 1st and 2nd level, Rated cross section: 2.5 mm<sup>2</sup>, cross section: 0.14 mm<sup>2</sup> - 4 mm<sup>2</sup>, mounting type: NS 35/7,5, NS 35/15, color: gray

---

## STTB 1,5 - Double-level spring-cage terminal block

3031157

<https://www.phoenixcontact.com/us/products/3031157>



Double-level spring-cage terminal block, nom. voltage: 500 V, nominal current: 17.5 A, connection method: Spring-cage connection, 1st and 2nd level, Rated cross section: 1.5 mm<sup>2</sup>, cross section: 0.08 mm<sup>2</sup> - 1.5 mm<sup>2</sup>, mounting type: NS 35/7,5, NS 35/15, color: gray

# VIP-PA-PWR/20XOE/ 4,0M/1756 - Front adapter

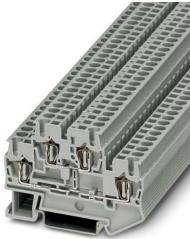
2908865

<https://www.phoenixcontact.com/us/products/2908865>

## STTB 2,5 - Double-level spring-cage terminal block

3031270

<https://www.phoenixcontact.com/us/products/3031270>



Double-level spring-cage terminal block, nom. voltage: 500 V, nominal current: 22 A, connection method: Spring-cage connection, Rated cross section: 2.5 mm<sup>2</sup>, cross section: 0.08 mm<sup>2</sup> - 4 mm<sup>2</sup>, mounting type: NS 35/7,5, NS 35/15, color: gray

---

## QTTCB 1,5 - Double-level terminal block

3205116

<https://www.phoenixcontact.com/us/products/3205116>



Double-level terminal block, nom. voltage: 500 V, nominal current: 17.5 A, connection method: Quick connection, 1st and 2nd level, Rated cross section: 1.5 mm<sup>2</sup>, cross section: 0.25 mm<sup>2</sup> - 1.5 mm<sup>2</sup>, mounting type: NS 35/7,5, NS 35/15, color: gray

# VIP-PA-PWR/20XOE/ 4,0M/1756 - Front adapter

2908865

<https://www.phoenixcontact.com/us/products/2908865>

## UT 2,5-TWIN - Feed-through terminal block

3044513

<https://www.phoenixcontact.com/us/products/3044513>



Feed-through terminal block, nom. voltage: 500 V, nominal current: 24 A, number of connections: 3, connection method: Screw connection, 1 level, Rated cross section: 2.5 mm<sup>2</sup>, cross section: 0.14 mm<sup>2</sup> - 4 mm<sup>2</sup>, mounting type: NS 35/7,5, NS 35/15, color: gray

---

## PT 1,5/S-TWIN - Feed-through terminal block

3208155

<https://www.phoenixcontact.com/us/products/3208155>



Feed-through terminal block, nom. voltage: 500 V, nominal current: 17.5 A, number of connections: 3, connection method: Push-in connection, 1 level, Rated cross section: 1.5 mm<sup>2</sup>, cross section: 0.14 mm<sup>2</sup> - 1.5 mm<sup>2</sup>, mounting type: NS 35/7,5, NS 35/15, color: gray

# VIP-PA-PWR/20XOE/ 4,0M/1756 - Front adapter

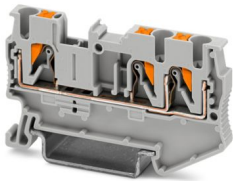
2908865

<https://www.phoenixcontact.com/us/products/2908865>

## PT 2,5-TWIN - Feed-through terminal block

3209549

<https://www.phoenixcontact.com/us/products/3209549>



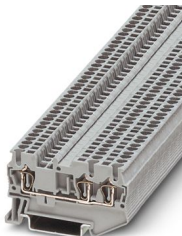
Feed-through terminal block, nom. voltage: 800 V, nominal current: 24 A, number of connections: 3, connection method: Push-in connection, Rated cross section: 2.5 mm<sup>2</sup>, cross section: 0.14 mm<sup>2</sup> - 4 mm<sup>2</sup>, mounting type: NS 35/7,5, NS 35/15, color: gray

---

## ST 1,5-TWIN - Feed-through terminal block

3031128

<https://www.phoenixcontact.com/us/products/3031128>



Feed-through terminal block, nom. voltage: 500 V, nominal current: 17.5 A, number of connections: 3, connection method: Spring-cage connection, Rated cross section: 1.5 mm<sup>2</sup>, cross section: 0.08 mm<sup>2</sup> - 1.5 mm<sup>2</sup>, mounting type: NS 35/7,5, NS 35/15, color: gray



# VIP-PA-PWR/20XOE/ 4,0M/1756 - Front adapter



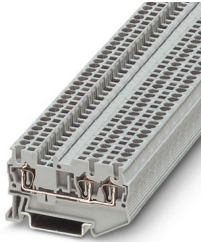
2908865

<https://www.phoenixcontact.com/us/products/2908865>

## ST 2,5-TWIN - Feed-through terminal block

3031241

<https://www.phoenixcontact.com/us/products/3031241>



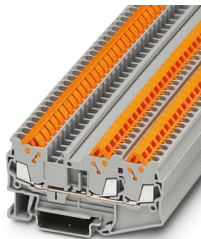
Feed-through terminal block, nom. voltage: 800 V, nominal current: 24 A, number of connections: 3, connection method: Spring-cage connection, Rated cross section: 2.5 mm<sup>2</sup>, cross section: 0.08 mm<sup>2</sup> - 4 mm<sup>2</sup>, mounting type: NS 35/7,5, NS 35/15, color: gray

---

## QTC 1,5-TWIN - Feed-through terminal block

3205048

<https://www.phoenixcontact.com/us/products/3205048>



Feed-through terminal block, nom. voltage: 800 V, nominal current: 17.5 A, number of connections: 3, connection method: Quick connection, 1 level, Rated cross section: 1.5 mm<sup>2</sup>, cross section: 0.25 mm<sup>2</sup> - 1.5 mm<sup>2</sup>, mounting type: NS 35/7,5, NS 35/7,5, color: gray

# VIP-PA-PWR/20XOE/ 4,0M/1756 - Front adapter

2908865

<https://www.phoenixcontact.com/us/products/2908865>

## QTC 2,5-TWIN - Feed-through terminal block

3206445

<https://www.phoenixcontact.com/us/products/3206445>



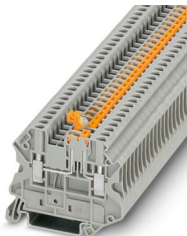
Feed-through terminal block, nom. voltage: 800 V, nominal current: 24 A, number of connections: 3, connection method: Quick connection, 1 level, Rated cross section: 2.5 mm<sup>2</sup>, cross section: 0.5 mm<sup>2</sup> - 2.5 mm<sup>2</sup>, mounting type: NS 35/7,5, NS 35/7,5, color: gray

---

## UT 2,5-MT - Knife-disconnect terminal block

3046362

<https://www.phoenixcontact.com/us/products/3046362>



Knife-disconnect terminal block, nom. voltage: 400 V, nominal current: 20 A, Thermal continuous current  $I_{th}$ : 20 A, connection method: Screw connection, Rated cross section: 2.5 mm<sup>2</sup>, cross section: 0.14 mm<sup>2</sup> - 4 mm<sup>2</sup>, mounting: NS 35/7,5, NS 35/15, color: gray

# VIP-PA-PWR/20XOE/ 4,0M/1756 - Front adapter

2908865

<https://www.phoenixcontact.com/us/products/2908865>

## PT 2,5-MT - Knife-disconnect terminal block

3210156

<https://www.phoenixcontact.com/us/products/3210156>



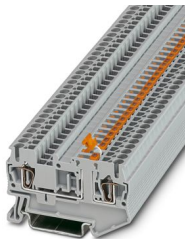
Knife-disconnect terminal block, nom. voltage: 400 V, nominal current: 20 A, connection method: Push-in connection, Rated cross section: 2.5 mm<sup>2</sup>, cross section: 0.14 mm<sup>2</sup> - 4 mm<sup>2</sup>, mounting: NS 35/7,5, NS 35/15, color: gray

---

## ST 2,5-MT - Knife-disconnect terminal block

3036343

<https://www.phoenixcontact.com/us/products/3036343>



Knife-disconnect terminal block, nom. voltage: 400 V, nominal current: 20 A, 1 level, connection method: Spring-cage connection, Rated cross section: 2.5 mm<sup>2</sup>, cross section: 0.08 mm<sup>2</sup> - 4 mm<sup>2</sup>, mounting: NS 35/7,5, NS 35/15, color: gray

# VIP-PA-PWR/20XOE/ 4,0M/1756 - Front adapter

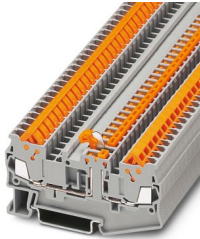
2908865

<https://www.phoenixcontact.com/us/products/2908865>

## QTC 1,5-MT - Knife-disconnect terminal block

3205103

<https://www.phoenixcontact.com/us/products/3205103>



Knife-disconnect terminal block, nom. voltage: 400 V, nominal current: 17.5 A, 1 level, connection method: Quick connection, Rated cross section: 1.5 mm<sup>2</sup>, cross section: 0.25 mm<sup>2</sup> - 1.5 mm<sup>2</sup>, mounting: NS 35/7,5, NS 35/15, color: gray

---

## QTC 2,5-MT - Knife-disconnect terminal block

3206487

<https://www.phoenixcontact.com/us/products/3206487>



Knife-disconnect terminal block, nom. voltage: 400 V, nominal current: 20 A, 1 level, connection method: Quick connection, Rated cross section: 2.5 mm<sup>2</sup>, cross section: 0.5 mm<sup>2</sup> - 2.5 mm<sup>2</sup>, mounting: NS 35/7,5, NS 35/15, color: gray

# VIP-PA-PWR/20XOE/ 4,0M/1756 - Front adapter

2908865

<https://www.phoenixcontact.com/us/products/2908865>



## SF-SL 1,0X5,5-150 - Screwdriver

1212552

<https://www.phoenixcontact.com/us/products/1212552>



Screwdriver, bladed (lasered), size: 1.0 x 5.5 x 150 mm, 2-component grip, with non-slip grip

---

## ZBF10:UNBEDRUCKT - Zack Marker strip, flat

0809997

<https://www.phoenixcontact.com/us/products/0809997>



Zack Marker strip, flat, Strip, white, unlabeled, can be labeled with: CMS-P1-PLOTTER, PLOTMARK, mounting type: snapped, for terminal block width: 10 mm, lettering field size: 5.15 x 10 mm, Number of individual labels: 10

---

Phoenix Contact 2024 © - all rights reserved  
<https://www.phoenixcontact.com>

Phoenix Contact USA  
586 Fulling Mill Road  
Middletown, PA 17057, United States  
(+717) 944-1300  
[info@phoenixcon.com](mailto:info@phoenixcon.com)