

# VIP-PA-PWR/20XOE/ 1,0M/1756 - Front adapter



2908863

<https://www.phoenixcontact.com/us/products/2908863>

Please be informed that the data shown in this PDF document is generated from our online catalog. Please find the complete data in the user documentation. Our general terms of use for downloads are valid.



VIP power cabling, universal front adapter with assembled shielded round cable for connection to all popular 20-pos. ControlLogix® 1756 I/O modules. 1 x 20 single wires (each ferruled and marked) can be connected (field connection, e.g., via 20 terminal blocks).

## Your advantages

- Individual I/O modules lock to the controller for connection security
- Integrated lever aids in removal from I/O card
- Marking label can be attached
- 1:1 connection
- Open end at one end
- Individual wire marking: 1, 2, 3, 4, etc.
- Individual wires fitted with ferrules
- Shield connection: UL Type AWM, Style 1007 18 AWG (0.82 mm<sup>2</sup>) cable, black, 0.5 m length

## Commercial data

Item number	2908863
Packing unit	1 pc
Note	Made to order (non-returnable)
Sales key	C423
Product key	CK2311
GTIN	4063151533366
Weight per piece (including packing)	409 g
Weight per piece (excluding packing)	409 g
Customs tariff number	85444290
Country of origin	US

# VIP-PA-PWR/20XOE/ 1,0M/1756 - Front adapter



2908863

<https://www.phoenixcontact.com/us/products/2908863>

## Technical data

### Product properties

Product type	Front adapter
Insulation characteristics	
Overvoltage category	II
Pollution degree	2

### Electrical properties

Max. permissible operating voltage	250 V AC/DC
Max. permissible current	3 A (per single wire at 60°C)
	4 A (per single wire at 40°C)

### Supported controller ALLEN-BRADLEY ControlLogix

Suitable I/O card	1756-IA16
	1756-IB16
	1756-OA16
	1756-OA8
	1756-OB16E
	1756-OB8
	1756-OF4
	1756-OF8
	1756-CFM
	1756-IA8D
	1756-IC16
	1756-IG16
	1756-IN16
	1756-IV16
	1756-OA8D
	1756-OA8E
	1756-OC8
	1756-OF8H
	1756-OG16
	1756-ON8
	1756-OV16E
	1756-PLS

### Connection data

#### Controller level

Connection method	Plug-in connection
Note	Can be plugged onto 20-pos. I/O modules

#### Field level

# VIP-PA-PWR/20XOE/ 1,0M/1756 - Front adapter



2908863

<https://www.phoenixcontact.com/us/products/2908863>

Connection method	Single wires
Number of connections	20
Number of positions	1
Note	The wires are marked and fitted with ferrules

## Dimensions

### Cable

Length	1 m
--------	-----

### Cable/line

Number of positions	20
Shielded	yes
Conductor type	Assembled shielded round cable
AWG signal line	18
Conductor cross section	20x 0.82 mm <sup>2</sup>
Wire diameter incl. insulation	1.7 mm ±0.0254
External cable diameter	12.75 mm ±0.3 mm
Outer sheath, material	PVC
External sheath, color	gray
Conductor material	Tin-plated Cu litz wires
Cable resistance	≤ 40 Ω/km (20 °C)
Insulation resistance	≥ 20 MΩ*km (20 °C)
Smallest bending radius, fixed installation	87.4 mm
Smallest bending radius, movable installation	125 mm
Halogen-free	no
Flame resistance	UL VW-1 CSA FT-1

### 1X1.0 [PVC]

Cable type	1X1.0 [PVC]
ControlLogix <sup>®</sup> plug (1)	() = black
ControlLogix <sup>®</sup> plug (2)	() = brown
ControlLogix <sup>®</sup> plug (3)	() = red
ControlLogix <sup>®</sup> plug (4)	() = orange
ControlLogix <sup>®</sup> plug (5)	() = yellow
ControlLogix <sup>®</sup> plug (6)	() = green
ControlLogix <sup>®</sup> plug (7)	() =
ControlLogix <sup>®</sup> plug (8)	() = violet
ControlLogix <sup>®</sup> plug (9)	() = gray
ControlLogix <sup>®</sup> plug (10)	() = white
ControlLogix <sup>®</sup> plug (11)	() = white-black
ControlLogix <sup>®</sup> plug (12)	() = white-brown
ControlLogix <sup>®</sup> plug (13)	() = white-red
ControlLogix <sup>®</sup> plug (14)	() = white-orange

# VIP-PA-PWR/20XOE/ 1,0M/1756 - Front adapter



2908863

<https://www.phoenixcontact.com/us/products/2908863>

ControlLogix <sup>®</sup> plug (15)	() = white-yellow
ControlLogix <sup>®</sup> plug ()	() = white-green
	() = white-blue
ControlLogix <sup>®</sup> plug (18)	() = white-violet
ControlLogix <sup>®</sup> plug (19)	() = white-gray
ControlLogix <sup>®</sup> plug (20)	() = brown-black
Cable type	Front adapter with cable and 20 open cable ends

## Environmental and real-life conditions

### Ambient conditions

Degree of protection (IP20)	IP20
Ambient temperature (operation)	0 °C ... 60 °C
Ambient temperature (storage/transport)	-20 °C ... 70 °C
Altitude	< 2000 m

## Approvals

### UL data

Max. permissible relative humidity (operation)	< 95 %
--	--------

## Standards and regulations

Standards/regulations	UL 61010-2-201
-----------------------	----------------

## Notes


General	For proper use, the specifications of the installation directive (see Downloads) must be observed. For applications or use with third-party products, the specifications, and the safety and warning instructions of the respective third-party manufacturer must also be met.
---------	--

2908863


<https://www.phoenixcontact.com/us/products/2908863>

Approvals

To download certificates, visit the product detail page: <https://www.phoenixcontact.com/us/products/2908863>



**UL Classified**  
Approval ID: FILE E238705



**cUL Classified**  
Approval ID: FILE E238705



**UL Recognized**  
Approval ID: FILE E196811



**UL Recognized**  
Approval ID: FILE E196811

**cULus Classified**

**cULus Recognized**

# VIP-PA-PWR/20XOE/ 1,0M/1756 - Front adapter



2908863

<https://www.phoenixcontact.com/us/products/2908863>

## Classifications

### ECLASS

ECLASS-11.0	27242292
ECLASS-12.0	27242292
ECLASS-13.0	27242292

### ETIM

ETIM 9.0	EC002584
----------	----------

### UNSPSC

UNSPSC 21.0	32151600
-------------	----------

Environmental product compliance

EU RoHS	
Fulfills EU RoHS substance requirements	Yes, No exemptions
China RoHS	
Environment friendly use period (EFUP)	EFUP-50
	An article-related China RoHS declaration table can be found in the download area for the respective article under "Manufacturer declaration". For all articles with EFUP-E, no China RoHS declaration table issued and required.
EU REACH SVHC	
REACH candidate substance (CAS No.)	No substance above 0.1 wt%

# VIP-PA-PWR/20XOE/ 1,0M/1756 - Front adapter



2908863

<https://www.phoenixcontact.com/us/products/2908863>

## Accessories

### KME - Cable marker carrier

0807083

<https://www.phoenixcontact.com/us/products/0807083>



Cable marker carrier, white, unlabeled, mounting type: Assembly with cable ties, cable diameter: > 5 mm, lettering field size: 20 x 8 mm

---

### UT 2,5 - Feed-through terminal block

3044076

<https://www.phoenixcontact.com/us/products/3044076>



Feed-through terminal block, nom. voltage: 1000 V, nominal current: 24 A, number of connections: 2, connection method: Screw connection, Rated cross section: 2.5 mm<sup>2</sup>, cross section: 0.14 mm<sup>2</sup> - 4 mm<sup>2</sup>, mounting type: NS 35/7,5, NS 35/15, color: gray



# VIP-PA-PWR/20XOE/ 1,0M/1756 - Front adapter



2908863

<https://www.phoenixcontact.com/us/products/2908863>

## PT 1,5/S - Feed-through terminal block

3208100

<https://www.phoenixcontact.com/us/products/3208100>



Feed-through terminal block, nom. voltage: 500 V, nominal current: 17.5 A, number of connections: 2, connection method: Push-in connection, 1 level, Rated cross section: 1.5 mm<sup>2</sup>, cross section: 0.14 mm<sup>2</sup> - 1.5 mm<sup>2</sup>, mounting type: NS 35/7,5, NS 35/15, color: gray

---

## PT 2,5 - Feed-through terminal block

3209510

<https://www.phoenixcontact.com/us/products/3209510>



Feed-through terminal block, nom. voltage: 800 V, nominal current: 24 A, number of connections: 2, number of positions: 1, connection method: Push-in connection, Rated cross section: 2.5 mm<sup>2</sup>, cross section: 0.14 mm<sup>2</sup> - 4 mm<sup>2</sup>, mounting type: NS 35/7,5, NS 35/15, color: gray

# VIP-PA-PWR/20XOE/ 1,0M/1756 - Front adapter



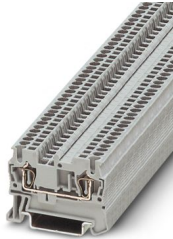
2908863

<https://www.phoenixcontact.com/us/products/2908863>

## ST 1,5 - Feed-through terminal block

3031076

<https://www.phoenixcontact.com/us/products/3031076>



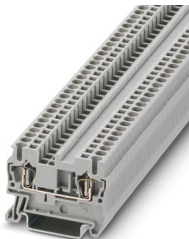
Feed-through terminal block, nom. voltage: 500 V, nominal current: 17.5 A, number of connections: 2, connection method: Spring-cage connection, 1 level, Rated cross section: 1.5 mm<sup>2</sup>, cross section: 0.08 mm<sup>2</sup> - 1.5 mm<sup>2</sup>, mounting type: NS 35/7,5, NS 35/15, color: gray

---

## ST 2,5 - Feed-through terminal block

3031212

<https://www.phoenixcontact.com/us/products/3031212>



Feed-through terminal block, nom. voltage: 800 V, nominal current: 24 A, number of connections: 2, connection method: Spring-cage connection, Rated cross section: 2.5 mm<sup>2</sup>, cross section: 0.08 mm<sup>2</sup> - 4 mm<sup>2</sup>, mounting type: NS 35/7,5, NS 35/15, color: gray

# VIP-PA-PWR/20XOE/ 1,0M/1756 - Front adapter



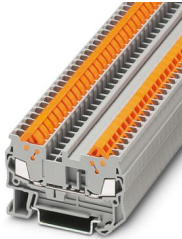
2908863

<https://www.phoenixcontact.com/us/products/2908863>

## QTC 1,5 - Feed-through terminal block

3205019

<https://www.phoenixcontact.com/us/products/3205019>



Feed-through terminal block, nom. voltage: 800 V, nominal current: 17.5 A, number of connections: 2, connection method: Quick connection, 1 level, Rated cross section: 1.5 mm<sup>2</sup>, cross section: 0.25 mm<sup>2</sup> - 1.5 mm<sup>2</sup>, mounting type: NS 35/7,5, NS 35/15, color: gray

---

## QTC 2,5 - Feed-through terminal block

3206416

<https://www.phoenixcontact.com/us/products/3206416>



Feed-through terminal block, nom. voltage: 800 V, nominal current: 24 A, number of connections: 2, connection method: Quick connection, 1 level, Rated cross section: 2.5 mm<sup>2</sup>, cross section: 0.5 mm<sup>2</sup> - 2.5 mm<sup>2</sup>, mounting type: NS 35/7,5, NS 35/15, color: gray

# VIP-PA-PWR/20XOE/ 1,0M/1756 - Front adapter

2908863

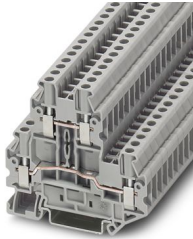
<https://www.phoenixcontact.com/us/products/2908863>



## UTTB 2,5 - Double-level terminal block

3044636

<https://www.phoenixcontact.com/us/products/3044636>



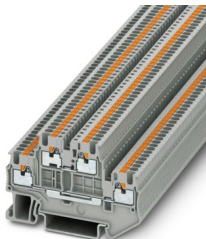
Double-level terminal block, nom. voltage: 500 V, nominal current: 24 A, connection method: Screw connection, Rated cross section: 2.5 mm<sup>2</sup>, cross section: 0.14 mm<sup>2</sup> - 4 mm<sup>2</sup>, mounting type: NS 35/7,5, NS 35/15, color: gray

---

## PTTB 1,5/S - Double-level terminal block

3208511

<https://www.phoenixcontact.com/us/products/3208511>



Double-level terminal block, nom. voltage: 500 V, nominal current: 16 A, connection method: Push-in connection, 1st and 2nd level, Rated cross section: 1.5 mm<sup>2</sup>, cross section: 0.14 mm<sup>2</sup> - 1.5 mm<sup>2</sup>, mounting type: NS 35/7,5, NS 35/15, color: gray

# VIP-PA-PWR/20XOE/ 1,0M/1756 - Front adapter



2908863

<https://www.phoenixcontact.com/us/products/2908863>

## PTTB 2,5 - Double-level terminal block

3210567

<https://www.phoenixcontact.com/us/products/3210567>



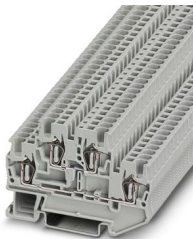
Double-level terminal block, nom. voltage: 500 V, nominal current: 22 A, connection method: Push-in connection, 1st and 2nd level, Rated cross section: 2.5 mm<sup>2</sup>, cross section: 0.14 mm<sup>2</sup> - 4 mm<sup>2</sup>, mounting type: NS 35/7,5, NS 35/15, color: gray

---

## STTB 1,5 - Double-level spring-cage terminal block

3031157

<https://www.phoenixcontact.com/us/products/3031157>



Double-level spring-cage terminal block, nom. voltage: 500 V, nominal current: 17.5 A, connection method: Spring-cage connection, 1st and 2nd level, Rated cross section: 1.5 mm<sup>2</sup>, cross section: 0.08 mm<sup>2</sup> - 1.5 mm<sup>2</sup>, mounting type: NS 35/7,5, NS 35/15, color: gray

# VIP-PA-PWR/20XOE/ 1,0M/1756 - Front adapter



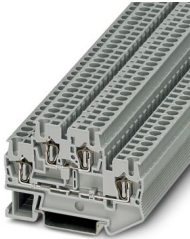
2908863

<https://www.phoenixcontact.com/us/products/2908863>

## STTB 2,5 - Double-level spring-cage terminal block

3031270

<https://www.phoenixcontact.com/us/products/3031270>



Double-level spring-cage terminal block, nom. voltage: 500 V, nominal current: 22 A, connection method: Spring-cage connection, Rated cross section: 2.5 mm<sup>2</sup>, cross section: 0.08 mm<sup>2</sup> - 4 mm<sup>2</sup>, mounting type: NS 35/7,5, NS 35/15, color: gray

---

## QTTCB 1,5 - Double-level terminal block

3205116

<https://www.phoenixcontact.com/us/products/3205116>



Double-level terminal block, nom. voltage: 500 V, nominal current: 17.5 A, connection method: Quick connection, 1st and 2nd level, Rated cross section: 1.5 mm<sup>2</sup>, cross section: 0.25 mm<sup>2</sup> - 1.5 mm<sup>2</sup>, mounting type: NS 35/7,5, NS 35/15, color: gray

# VIP-PA-PWR/20XOE/ 1,0M/1756 - Front adapter



2908863

<https://www.phoenixcontact.com/us/products/2908863>

## UT 2,5-TWIN - Feed-through terminal block

3044513

<https://www.phoenixcontact.com/us/products/3044513>



Feed-through terminal block, nom. voltage: 500 V, nominal current: 24 A, number of connections: 3, connection method: Screw connection, 1 level, Rated cross section: 2.5 mm<sup>2</sup>, cross section: 0.14 mm<sup>2</sup> - 4 mm<sup>2</sup>, mounting type: NS 35/7,5, NS 35/15, color: gray

---

## PT 1,5/S-TWIN - Feed-through terminal block

3208155

<https://www.phoenixcontact.com/us/products/3208155>



Feed-through terminal block, nom. voltage: 500 V, nominal current: 17.5 A, number of connections: 3, connection method: Push-in connection, 1 level, Rated cross section: 1.5 mm<sup>2</sup>, cross section: 0.14 mm<sup>2</sup> - 1.5 mm<sup>2</sup>, mounting type: NS 35/7,5, NS 35/15, color: gray

# VIP-PA-PWR/20XOE/ 1,0M/1756 - Front adapter



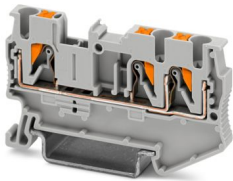
2908863

<https://www.phoenixcontact.com/us/products/2908863>

## PT 2,5-TWIN - Feed-through terminal block

3209549

<https://www.phoenixcontact.com/us/products/3209549>



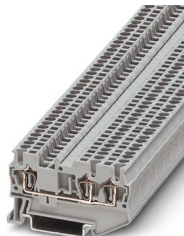
Feed-through terminal block, nom. voltage: 800 V, nominal current: 24 A, number of connections: 3, connection method: Push-in connection, Rated cross section: 2.5 mm<sup>2</sup>, cross section: 0.14 mm<sup>2</sup> - 4 mm<sup>2</sup>, mounting type: NS 35/7,5, NS 35/15, color: gray

---

## ST 1,5-TWIN - Feed-through terminal block

3031128

<https://www.phoenixcontact.com/us/products/3031128>



Feed-through terminal block, nom. voltage: 500 V, nominal current: 17.5 A, number of connections: 3, connection method: Spring-cage connection, Rated cross section: 1.5 mm<sup>2</sup>, cross section: 0.08 mm<sup>2</sup> - 1.5 mm<sup>2</sup>, mounting type: NS 35/7,5, NS 35/15, color: gray



# VIP-PA-PWR/20XOE/ 1,0M/1756 - Front adapter



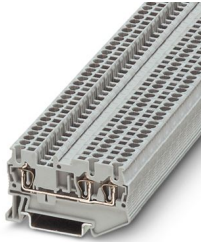
2908863

<https://www.phoenixcontact.com/us/products/2908863>

## ST 2,5-TWIN - Feed-through terminal block

3031241

<https://www.phoenixcontact.com/us/products/3031241>



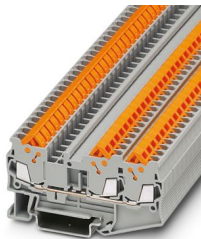
Feed-through terminal block, nom. voltage: 800 V, nominal current: 24 A, number of connections: 3, connection method: Spring-cage connection, Rated cross section: 2.5 mm<sup>2</sup>, cross section: 0.08 mm<sup>2</sup> - 4 mm<sup>2</sup>, mounting type: NS 35/7,5, NS 35/15, color: gray

---

## QTC 1,5-TWIN - Feed-through terminal block

3205048

<https://www.phoenixcontact.com/us/products/3205048>



Feed-through terminal block, nom. voltage: 800 V, nominal current: 17.5 A, number of connections: 3, connection method: Quick connection, 1 level, Rated cross section: 1.5 mm<sup>2</sup>, cross section: 0.25 mm<sup>2</sup> - 1.5 mm<sup>2</sup>, mounting type: NS 35/7,5, NS 35/7,5, color: gray

# VIP-PA-PWR/20XOE/ 1,0M/1756 - Front adapter



2908863

<https://www.phoenixcontact.com/us/products/2908863>

## QTC 2,5-TWIN - Feed-through terminal block

3206445

<https://www.phoenixcontact.com/us/products/3206445>



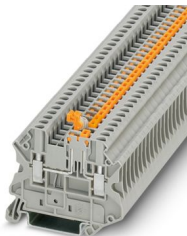
Feed-through terminal block, nom. voltage: 800 V, nominal current: 24 A, number of connections: 3, connection method: Quick connection, 1 level, Rated cross section: 2.5 mm<sup>2</sup>, cross section: 0.5 mm<sup>2</sup> - 2.5 mm<sup>2</sup>, mounting type: NS 35/7,5, NS 35/7,5, color: gray

---

## UT 2,5-MT - Knife-disconnect terminal block

3046362

<https://www.phoenixcontact.com/us/products/3046362>



Knife-disconnect terminal block, nom. voltage: 400 V, nominal current: 20 A, Thermal continuous current  $I_{th}$ : 20 A, connection method: Screw connection, Rated cross section: 2.5 mm<sup>2</sup>, cross section: 0.14 mm<sup>2</sup> - 4 mm<sup>2</sup>, mounting: NS 35/7,5, NS 35/15, color: gray

# VIP-PA-PWR/20XOE/ 1,0M/1756 - Front adapter



2908863

<https://www.phoenixcontact.com/us/products/2908863>

## PT 2,5-MT - Knife-disconnect terminal block

3210156

<https://www.phoenixcontact.com/us/products/3210156>



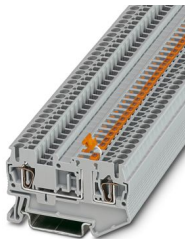
Knife-disconnect terminal block, nom. voltage: 400 V, nominal current: 20 A, connection method: Push-in connection, Rated cross section: 2.5 mm<sup>2</sup>, cross section: 0.14 mm<sup>2</sup> - 4 mm<sup>2</sup>, mounting: NS 35/7,5, NS 35/15, color: gray

---

## ST 2,5-MT - Knife-disconnect terminal block

3036343

<https://www.phoenixcontact.com/us/products/3036343>



Knife-disconnect terminal block, nom. voltage: 400 V, nominal current: 20 A, 1 level, connection method: Spring-cage connection, Rated cross section: 2.5 mm<sup>2</sup>, cross section: 0.08 mm<sup>2</sup> - 4 mm<sup>2</sup>, mounting: NS 35/7,5, NS 35/15, color: gray

# VIP-PA-PWR/20XOE/ 1,0M/1756 - Front adapter



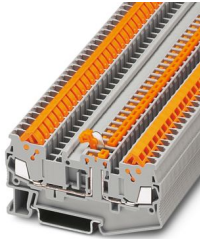
2908863

<https://www.phoenixcontact.com/us/products/2908863>

## QTC 1,5-MT - Knife-disconnect terminal block

3205103

<https://www.phoenixcontact.com/us/products/3205103>



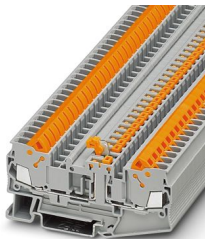
Knife-disconnect terminal block, nom. voltage: 400 V, nominal current: 17.5 A, 1 level, connection method: Quick connection, Rated cross section: 1.5 mm<sup>2</sup>, cross section: 0.25 mm<sup>2</sup> - 1.5 mm<sup>2</sup>, mounting: NS 35/7,5, NS 35/15, color: gray

---

## QTC 2,5-MT - Knife-disconnect terminal block

3206487

<https://www.phoenixcontact.com/us/products/3206487>



Knife-disconnect terminal block, nom. voltage: 400 V, nominal current: 20 A, 1 level, connection method: Quick connection, Rated cross section: 2.5 mm<sup>2</sup>, cross section: 0.5 mm<sup>2</sup> - 2.5 mm<sup>2</sup>, mounting: NS 35/7,5, NS 35/15, color: gray

## VIP-PA-PWR/20XOE/ 1,0M/1756 - Front adapter

2908863

<https://www.phoenixcontact.com/us/products/2908863>



## SF-SL 1,0X5,5-150 - Screwdriver

1212552

<https://www.phoenixcontact.com/us/products/1212552>



Screwdriver, bladed (lasered), size: 1.0 x 5.5 x 150 mm, 2-component grip, with non-slip grip

---

## ZBF10:UNBEDRUCKT - Zack Marker strip, flat

0809997

<https://www.phoenixcontact.com/us/products/0809997>



Zack Marker strip, flat, Strip, white, unlabeled, can be labeled with: CMS-P1-PLOTTER, PLOTMARK, mounting type: snapped, for terminal block width: 10 mm, lettering field size: 5.15 x 10 mm, Number of individual labels: 10

---

Phoenix Contact 2024 © - all rights reserved

<https://www.phoenixcontact.com>

Phoenix Contact USA  
586 Fulling Mill Road  
Middletown, PA 17057, United States  
(+717) 944-1300  
[info@phoenixcon.com](mailto:info@phoenixcon.com)