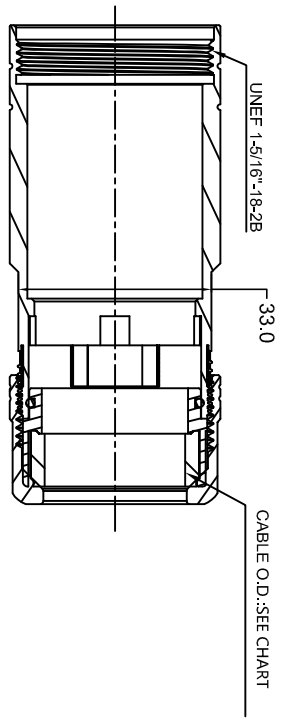
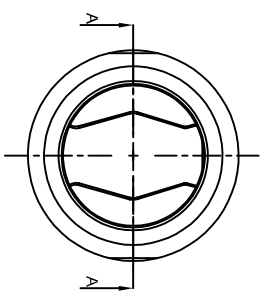
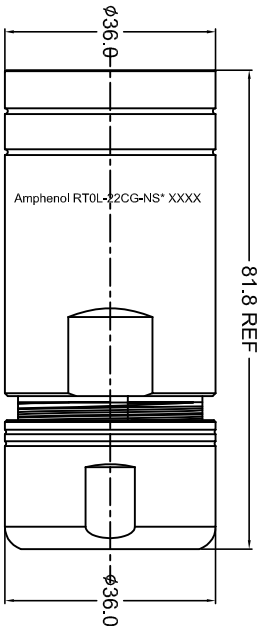


REVISIONS				
REV	ECO	DESCRIPTION	DATE	BY APPR
A1	-	RELEASED DRAWING	2017-3-14	FLAN TOMMY



P/N	CABLE O.D.
RTOL-22CG-NS1-*	13.5-0.18 0mm
RTOL-22CG-NS2-*	18.0-0.24 0mm

- NOTES : (UNLESS OTHERWISE SPECIFIED)
- MATERIAL :
 - NUT : ZINC ALLOY.
 - BACK SHELL : ZINC ALLOY.
 - O-RING: SILICONE RUBBER.
 - WIRE SEALING : RUBBER.
 - EMI SHIELDING RING : STAINLESS STEEL.
 - CLAMP INSERT : THERMOPLASTIC UL94 V-0.
 - RoHS COMPLIANT.
 - ALL DIMENSIONS ARE FOR REFERENCE USE ONLY.
 - SHELL FINISHED:

P/N	** * *	SHELL FINISHED
	OMIT	PLATED NICKLE
	Z	BLACK ZINC
RTOL-22CG-NS*-*	G	GREEN ZINC

QUANTITY	PART NUMBER	DESCRIPTION	ITEM

MATERIALS LIST			
SIGNATURES	DATE	SIZE	TYPE
DRAWN: Hm	2017-3-14	B	C-
CHECKED: Jod	2017-3-14		
ENGINEER:			
APPROVAL: Tommy	2017-3-14		

UNLESS OTHERWISE SPECIFIED 1) All dimensions are in millimeters. 2) Tolerances are as follows: 1 Pl. DEC 0.30 Fractions .1/16" 3 Pl. DEC 0.08 Angles .1°	3) Note reference =
PROCESS SPECIFICATIONS:	
MATERIAL SPECIFICATIONS:	
CUSTOMER:	
TEST SPECIMENS IS SUPERSEDED BY THE LATEST SPECIFICATIONS AND PERFORMANCE DATA FROM THE MANUFACTURING OPERATION. NO PARTS OF REPRODUCTION ARE PERMITTED. ALL MANUFACTURING VARIATIONS ARE PERMITTED.	
SCALE: NONE	
SHEET 1	OF 1

Amphenol
Sine Systems - www.amphenol-sine.com
44724 Morley Drive
Clinton Township, MI 48036

ECO-MATE CORD GRIP,
SIZE 22.