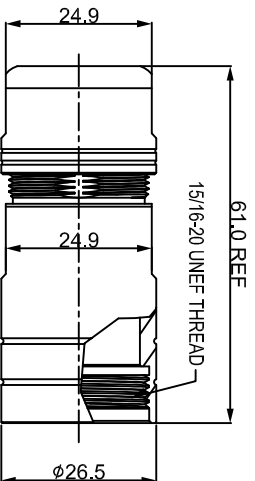
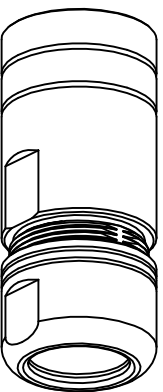
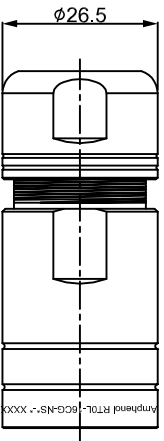
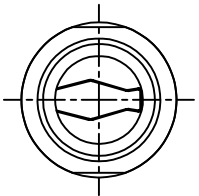


REVISIONS				
REV	ECO	DESCRIPTION	DATE	BY APPR
B1	-	RELEASED DRAWING	NOV/01/2017	FLAN TOMMY



NOTES : (UNLESS OTHERWISE SPECIFIED)

1. MATERIAL :
 - 1.1. NUT : ZINC ALLOY,
 - 1.2. BACK SHELL : ZINC ALLOY,
 - 1.3. O-RING: SILICONE RUBBER,
 - 1.4. CABLE SEAL : EPDM,
 - 1.5 EMI SHIELDING RING : STAINLESS STEEL,
 - 1.6 CLAMP INSERT : THERMOPLASTIC UL94 V-0.
2. ROHS COMPLIANT.
3. ALL DIMENSIONS ARE FOR REFERENCE USE ONLY.
4. SHELL FINISHED:

P/N	** *	SHELL FINISHED
	OMIT	PLATED NICKLE
RT0L-16CG-NS*-*	Z	BLACK ZINC
	G	GREEN ZINC

P/N	CABLE O.D.
RT0L-16CG-NS1-*	φ10.0-φ14.0mm
RT0L-16CG-NS2-*	φ13.5-φ17.0mm

QUANTITY	PART NUMBER	DESCRIPTION	ITEM

MATERIALS LIST

UNLESS OTHERWISE SPECIFIED	SIGNATURES	DATE
1) All dimensions are in millimeters. 2) Tolerances are as follows: 1 Pl. DEC 20.30 Fractions .1"=1/4 3 Pl. DEC 20.08 Angles .1°	DRAWN: Hm CHECKED: Jod ENGINEER: Tommy	NOV/01/2017 NOV/01/2017 NOV/01/2017
3) Note reference =	APPROVAL: Tommy	NOV/01/2017

PROCESS SPECIFICATIONS:	CUSTOMER:	SIZE	TYPE	DWG NO.	REVISION
PROCESS SPECIFICATIONS:	ECO-MATE CORD GRIP, SIZE 16.	B	C-	RT0L-16CG-NS*-*	B1
TEST DRAWINGS SUPERSEDES PREVIOUS TEST DRAWINGS. SPECIFICATIONS AND PERFORMANCE DATA ARE SUBJECT TO CHANGE WITHOUT NOTICE. THE MANUFACTURING CORPORATION NO BORS OF REPRODUCTION ARE LIMITED. ALL MANUFACTURING VARIATIONS.	Customer: Sine Systems - www.amphenol-sine.com 44724 Morley Drive Clinton Township, MI 48036	SCALE: NONE			SHEET 1 OF 1

TEXT ASSY:

TITLE:

ECO-MATE CORD GRIP SIZE 16.

DWG NO.:

RT0L-16CG-NS*-*

REV: B1

SH: 1

OF: 1