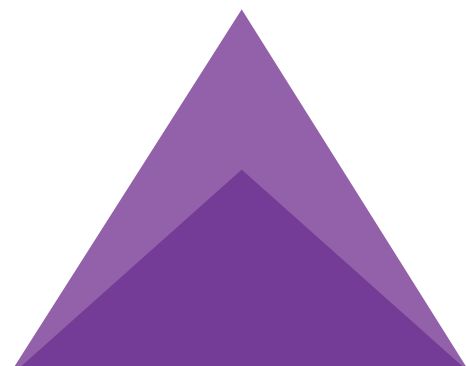




## TUBE GLIDES, FEET & BUMPERS



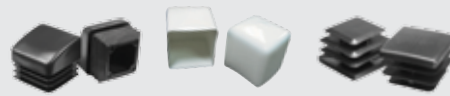
Threaded Insert Glides  
388 - 390



Round insert Glides  
390 - 397



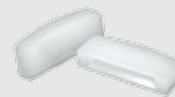
Square Insert Glides  
398 - 401



Rectangular & Oval insert Glides  
401 - 402



Tube Connectors  
403



Plastic Based Levelers  
404 - 410



Tack Glides  
411



Rivet Feet  
412 - 413



Bumpers  
413 - 420



Tube Insert Selector Guide  
421





# HEAVY DUTY THREADED INSERT GLIDES

## SQH SERIES

### Square Heavy Duty Threaded Inserts



**Specifications:**

- Material: Glass-filled nylon with brass threaded insert
- Color: Black

Item No.	Tube Size In	Thread Size	Tube Gauge	Wall Thickness In	Load Capacity lbs.	Bulk Pack Qty
SQH0100A	1.5	3/8-16	16	0.065	1350	48
SQH0150A	1.5	1/2-13	16	0.065	1350	48
SQH0200A	1.5	5/8-11	16	0.065	1350	48
SQH0250A	1.5	3/4-10	16	0.065	1800	48
SQH0300A	1.5	3/8-16	11	0.12	1350	48
SQH0350A	1.5	1/2-13	11	0.12	1350	48
SQH0400A	1.5	5/8-11	11	0.12	1350	48
SQH0450A	1.5	3/4-10	11	0.12	1800	48

**Features:**

- Threaded brass insert for indoor and outdoor use
- High load rating is ideal for machinery use

Item No.	Tube Size In	Thread Size	Tube Gauge	Wall Thickness In	Load Capacity lbs.	Bulk Pack Qty
SQH0500A	2	3/8-16	16	0.065	1350	24
SQH0550A	2	1/2-13	16	0.065	1350	24
SQH0600A	2	5/8-11	16	0.065	1350	24
SQH0650A	2	3/4-10	16	0.065	2000	24
SQH0700A	2	3/8-16	12	0.109	1350	24
SQH0750A	2	1/2-13	12	0.109	1350	24
SQH0800A	2	5/8-11	12	0.109	1350	24
SQH0850A	2	3/4-10	12	0.109	2000	24

## RDH Series

### Round Heavy Duty Threaded Inserts



**Specifications:**

- Material: Glass-filled nylon with brass threaded insert
- Color: Black

Item No.	Tube Size In	Thread Size	Tube Gauge	Wall Thickness In	Load Capacity lbs.	Bulk Pack Qty
RDH0100A	1.500	3/8-16	16	0.065	1100	48
RDH0150A	1.500	1/2-13	16	0.065	1100	48
RDH0200A	1.500	5/8-11	16	0.065	1100	48
RDH0250A	1.500	3/4-10	16	0.065	1100	48
RDH0300A	2.000	3/8-16	16	0.065	1250	24
RDH0350A	2.000	1/2-13	16	0.065	1250	24

**Features:**

- Threaded brass insert for indoor and outdoor use
- High load rating is ideal for machinery use

Item No.	Tube Size In	Thread Size	Tube Gauge	Wall Thickness In	Load Capacity lbs.	Bulk Pack Qty
RDH0400A	2.000	5/8-11	16	0.065	1250	24
RDH0450A	2.000	3/4-10	16	0.065	2000	24
RDH0500A	2.000	3/8-16	12	0.109	1250	24
RDH0550A	2.000	1/2-13	12	0.109	1250	24
RDH0600A	2.000	5/8-11	12	0.109	1250	24
RDH0650A	2.000	3/4-10	12	0.109	2000	24

## SQM Series

### Square Metal Threaded Inserts



Sizing & Selector

**GUIDE**

See Page 421



**Specifications:**

- Material: HDPE with Zinc-Plated Steel-Threaded Insert
- Color: Black

**Features:**

- Tube inserts with internal threads to accommodate adjustable leveling mounts and feet
- Ribbed to accommodate multiple gauges

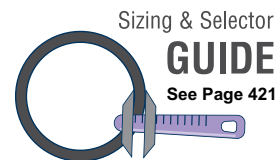
Item No.	Tube Size	Thread Size	Gauge	Wall Thickness In	Bulk Pack Qty
SQM0150A	0.750	1/4-20	16-18	0.049-0.065	1000
SQM0200A	0.875	1/4-20	16-18	0.049-0.065	1000
SQM0300A	1.000	1/4-20	16-18	0.049-0.065	1000
SQM0350A	1.000	5/16-18	16-18	0.049-0.065	1000
SQM0400A	1.000	1/4-20	12-14	0.083-0.109	1000
SQM0450A	1.000	5/16-18	12-14	0.083-0.109	1000
SQM0500A	1.000	1/4-20	10-11	0.120-0.134	1000
SQM0550A	1.000	5/16-18	10-11	0.120-0.134	1000

Item No.	Tube Size	Thread Size	Gauge	Wall Thickness In	Bulk Pack Qty
SQM0600A	1.250	5/16-18	16-18	0.049-0.065	500
SQM0650A	1.250	3/8-16	16-18	0.049-0.065	500
SQM0700A	1.250	5/16-18	12-14	0.083-0.109	500
SQM0750A	1.250	3/8-16	12-14	0.083-0.109	500
SQM0800A	1.250	5/16-18	10-11	0.120-0.134	500
SQM0850A	1.250	3/8-16	10-11	0.120-0.134	500
SQM0900A	1.375	3/8-16	16-18	0.049-0.065	500
SQM1000A	1.500	3/8-16	16-18	0.049-0.065	500

# THREADED INSERT GLIDES



## RDM Series Round Metal Threaded Inserts



**Specifications:**

- Material: HDPE with Zinc-Plated Steel-Threaded Insert
- Color: Black

**Features:**

- Tube inserts with internal threads to accommodate adjustable leveling mounts and feet
- Ribbed to accommodate multiple gauges

Item No.	Tube Size	Thread Size	Gauge	Wall Thickness In	Bulk Pack Qty
RDM0100A	0.750	1/4-20	16-18	0.049-0.065	1000
RDM0150A	0.875	1/4-20	16-18	0.049-0.065	1000
RDM0200A	0.875	1/4-20	12-14	0.083-0.109	1000
RDM0250A	0.875	1/4-20	10-11	0.120-0.134	1000
RDM0300A	1.000	1/4-20	16-18	0.049-0.065	1000
RDM0350A	1.000	5/16-18	16-18	0.049-0.065	1000
RDM0400A	1.000	1/4-20	12-14	0.083-0.109	750
RDM0450A	1.000	5/16-18	12-14	0.083-0.109	750
RDM0500A	1.000	1/4-20	10-11	0.120-0.134	750
RDM0550A	1.000	5/16-20	10-11	0.120-0.134	750
RDM0600A	1.125	5/16-18	16-18	0.049-0.065	500
RDM0650A	1.125	3/8-16	16-18	0.049-0.065	500

Item No.	Tube Size	Thread Size	Gauge	Wall Thickness In	Bulk Pack Qty
RDM0700A	1.250	5/16-18	16-18	0.049-0.065	500
RDM0750A	1.250	3/8-16	16-18	0.049-0.065	500
RDM0800A	1.250	5/16-18	12-14	0.083-0.109	500
RDM0850A	1.375	3/8-16	12-14	0.083-0.109	500
RDM0950A	1.375	3/8-16	16-18	0.049-0.065	500
RDM1050A	1.500	5/16-18	16-18	0.049-0.065	500
RDM1100A	1.500	3/8-16	16-18	0.049-0.065	500
RDM1150A	1.500	5/16-18	12-14	0.083-0.109	500
RDM1200A	1.500	3/8-16	12-14	0.083-0.109	500
RDM2000A	2.000	5/16-18	14-16	0.065-0.083	500
RDM2050A	2.000	3/8-16	14-16	0.065-0.083	500

## RCM Series Rectangular Metal Threaded Inserts



**Specifications:**

- Material: HDPE with Zinc-Plated Steel-Threaded Insert
- Color: Black

**Features:**

- Tube inserts with internal threads to accommodate adjustable leveling mounts and feet
- Ribbed to accommodate multiple gauges

Item No.	Tube Size	Thread Size	Gauge	Wall Thickness In	Bulk Pack Qty
RCM0150A	0.75 X 1.50	1/4-20	16-18	0.049-0.065	500
RCM0250A	1.00 X 1.50	1/4-20	16-18	0.049-0.065	500
RCM0300A	1.00 X 1.50	5/16-18	16-18	0.049-0.065	500
RCM0350A	2.00 X 1.00	5/16-18	16-18	0.049-0.065	250
RCM0400A	2.00 X 1.00	5/16-18	14-16	0.065-0.083	250
RCM0600A	3.00 X 1.50	3/8-16	14-16	0.065-0.083	250

## TAS Series Square Threaded All Metal Inserts



**Specifications:**

- Material: Steel with Zinc plated finish

**Features:**

- Metal ribs lock onto inside of square tube

Item No.	Fits Tube In	Thread	Fits Gauge	Bulk Pack Qty
TAS240A	1	5/16-18	16-18	1000
TAS260A	1-1/4	5/16-18	16-18	500
TAS460A	1-1/4	3/8-16	16-18	500
TAS270A	1-1/2	5/16-18	16-18	500
TAS470A	1-1/2	3/8-16	16-18	500

## TAR Series Round Threaded All Metal Inserts



**Specifications:**

- Material: Steel with Zinc plated finish

**Features:**

- Metal ribs lock onto inside of round tube

Item No.	Fits Tube	Thread	Fits Gauge	Bulk Pack Qty
TAR010A	5/8"	1/4-20	16-18	1000
TAR020A	3/4"	1/4-20	16-18	1000
TAR030A	7/8"	1/4-20	16-18	1000
TAR230A	7/8"	5/16-18	16-18	1000
TAR040A	1"	1/4-20	16-18	1000
TAR240A	1"	5/16-18	16-18	1000
TAR260A	1-1/4"	5/16-18	16-18	500
TAR460A	1-1/4"	3/8-16	16-18	500
TAR270A	1-1/2"	5/16-18	16-18	500
TAR470A	1-1/2"	3/8-16	16-18	500



# THREADED INSERT GLIDES & ROUND TUBE INSERT GLIDES

## STI Series Square Plastic Threaded Inserts



Specifications:

- Material: Nylon
- Color: Black or Natural

Features:

- Can be used with either adjustable feet or tilt glides

Item No.	Color	Tube Dia In	Tube Gauge	Thread Size	Bulk Pack Qty
STI1200B	Black	0.750	16	1/4-20	5000
STI1215A	Natural	0.875	16	1/4-20	1900
STI1215B	Black	0.875	16	1/4-20	1900
STI1220A	Natural	1.000	16	1/4-20	3000
STI1240A	Natural	1.000	18	1/4-20	2700
STI1260A	Natural	1.000	18	5/16-18	2700
STI1260B	Black	1.000	18	5/16-18	2700
STI1270A	Natural	1.250	16	5/16-18	1800

## RDR Series Round Multi-Gauge Ribbed Tube Inserts

Specifications:

- Material: LDPE
- Surface Finish: Polished or Textured

Features:

- Ideal for aesthetic or light-duty load bearing applications
- Perimeter rib design allows for easy assembly and a secure fit
- Used on a wide range of furniture and metal tubing applications



## Imperial

See page 421 for Sizing and Selector Guide.

Black Item No.		White Item No.		Tube OD	Tube Gauge	Bulk Pack Qty
Polished	Textured	Polished	Textured			
RDR111033A	RDR111053A	RDR111073A	—	0.500	16-20	2500
RDR111036A	RDR111056A	RDR111076A	—	0.750	14-20	1500
—	RDR081012A	—	RDR081012D	0.875	10-12	5000
RDR081420D	—	RDR111078A	—	0.875	14-20	5000
—	RDR101111A	—	—	1.000	10-12	2000
RDR101420D	RDR101420F	—	—	1.000	14-20	4000
RDR111040A	RDR111060A	RDR111080A	—	1.000	11-19	1000
RDR111042A	RDR111062A	RDR111082A	—	1.125	11-19	1000
RDR121014B	—	—	—	1.250	10-14	2500
RDR111044A	RDR111064A	RDR111084A	—	1.250	11-19	1000
RDR131418A	—	—	—	1.375	14-18	1200
RDR111492A	RDR111530A	—	—	1.375	11-19	1500
RDR150812A	—	—	—	1.500	8-12	1500
—	RDR151012A	—	—	1.500	10-12	1500
RDR111046A	RDR111066A	—	—	1.500	11-19	1000
RDR111495A	RDR111533A	RDR111571A	RDR111609A	1.625	11-19	1000
—	RDR171012A	—	—	1.750	10-12	1000
RDR111497A	RDR111535A	—	RDR111611A	1.750	11-19	1000
RDR111498A	RDR111536A	—	RDR111612A	1.875	11-19	800
RDR201014A	—	—	—	2.000	10-14	500
—	RDR201420A	—	—	2.000	14-18	500
RDR111049A	RDR111069A	RDR111089A	—	2.000	11-19	500
RDR230508B	RDR230508A	—	—	2.375	5-8	400
—	RDR231014A	—	—	2.375	10-14	400
—	RDR250812A	—	—	2.500	8-12	400
RDR111500A	RDR111538A	—	RDR111614A	2.500	11-19	250
RDR460674A	RDR465601A	—	—	2.750	8-14	500
—	RDR280407A	—	—	2.875	4-7	300
—	RDR300812A	—	—	3.000	8-12	250
—	RDR301418A	—	—	3.000	14-18	250
RDR111052A	RDR111072A	RDR111092A	—	3.000	8-14	250
RDR400511A	—	—	—	4.000	5-11	150
RDR450711A	—	—	—	4.500	7-11	100

## Metric

Black Item No.		White Item No.		Tube OD	Tube Gauge	Bulk Pack Qty
Polished	Textured	Textured	Textured			
—	RDR111527A	—	—	10.00	11-19	2500
RDR111490A	RDR111528A	RDR111603A	—	12.00	14-20	2500
RDR111034A	—	—	—	13.00	14-20	2500
—	RDR460660A	—	—	15.00	14-20	2500
RDR111035A	RDR111055A	—	—	16.00	14-20	5000
RDR111037A	RDR111057A	—	—	20.00	14-20	1500
RDR111038A	RDR111058A	—	—	22.00	14-20	1500
RDR111043A	RDR111063A	—	—	30.00	11-19	1000

Black Item No.		White Item No.		Tube OD	Tube Gauge	Bulk Pack Qty
Polished	Textured	Textured	Textured			
RDR111044A	RDR111064A	RDR111084A	—	32.00	11-19	1000
RDR111794A	RDR111795A	—	—	32.00	11-14	1000
—	RDR111067A	—	—	40.00	11-19	1000
RDR111494A	RDR111532A	—	—	42.00	11-19	1000
RDR111496A	—	RDR111610A	—	45.00	11-19	1000
—	RDR465600A	—	—	55.00	11-19	600
RDR111050A	RDR111070A	—	—	60.00	11-19	400
—	RDR465596A	—	—	105.00	7-14	75





**RDG Series**  
**Round Load Bearing Glides**

Sizing & Selector

**GUIDE**

See Page 421



**Specifications:**

- Material: Refer to Chart
- Color: Black

**Features:**

- Glides are designed for use as a glide or plug style closure
- A reduced diameter step-lead is provided for easy positioning and insertion
- Ideal for moderate to heavy-duty applications



Item No.	Tube O.D. In	Tube Gauge	Wall Thickness In	Material	Bulk Pack Qty
RDG1100A	0.375	19	0.042	ABS	9000
RDG1105A	0.500	16	0.065	ABS	10000
RDG1110A	0.500	18	0.049	ABS	15000
RDG1115A	0.500	20	0.035	ABS	15000
RDG1120A	0.500	21	0.032	ABS	15000
RDG1125A	0.500	22	0.028	ABS	13000
RDG1127A	0.563	19	0.042	HDPE	10000
RDG1130A	0.563	20	0.035	ABS	13000
RDG1135A	0.563	22	0.028	ABS	6500
RDG1140A	0.625	11	0.120	ABS	13000
RDG1145A	0.625	12	0.109	ABS	13000
RDG1150A	0.625	13	0.095	ABS	15000
RDG1155D	0.625	14	0.083	ABS	3000
RDG1160A	0.625	15	0.072	ABS	7000
RDG1165A	0.625	16	0.065	ABS	7000
RDG1168B	0.625	17	0.058	Butyrate	10000
RDG1170A	0.625	17	0.058	ABS	8000
RDG1175A	0.625	18	0.049	ABS	8000
RDG1180A	0.625	20	0.035	ABS	5000
RDG1185A	0.625	22	0.028	ABS	8000
RDG1190A	0.750	13	0.095	ABS	6500
RDG1195C	0.750	14	0.083	ABS	1500
RDG1196A	0.750	14	0.083	ABS	6500
RDG1200A	0.750	16	0.065	ABS	7000
RDG1205A	0.750	17	0.058	ABS	8000
RDG1210A	0.750	18	0.049	ABS	7000
RDG1215A	0.750	19	0.042	ABS	6500
RDG1220A	0.750	20	0.035	ABS	6500
RDG1225A	0.750	22	0.028	ABS	3000
RDG1228B	0.875	13	0.095	LDPE	4500
RDG1230A	0.875	14	0.083	ABS	5000
RDG1235A	0.875	16	0.065	ABS	5000
RDG1237B	0.875	17	0.058	Nylon	5000
RDG1240A	0.875	18	0.049	ABS	4500
RDG1245A	0.875	19	0.042	ABS	5000
RDG1250A	0.875	20	0.035	ABS	45000
RDG1255A	1.000	12	0.109	ABS	4000
RDG1264B	1.000	14	0.083	Butyrate	4000
RDG1265A	1.000	14	0.083	ABS	4000
RDG1270A	1.000	15	0.072	ABS	4000
RDG1273B	1.000	16	0.065	Butyrate	4000
RDG1274D	1.000	16	0.065	Nylon	3500

Item No.	Tube O.D. In	Tube Gauge	Wall Thickness In	Material	Bulk Pack Qty
RDG1275A	1.000	16	0.065	ABS	4000
RDG1280A	1.000	17	0.058	ABS	3500
RDG1285A	1.000	18	0.049	ABS	3500
RDG1290A	1.000	19	0.042	ABS	3500
RDG1295C	1.000	20	0.035	ABS	3500
RDG1305C	1.125	12	0.109	ABS	2500
RDG1310A	1.125	14	0.083	ABS	2800
RDG1315A	1.125	16	0.065	ABS	2800
RDG1320B	1.125	18	0.049	ABS	2800
RDG1325A	1.125	19	0.042	ABS	2800
RDG1327B	1.130	20	0.035	LDPE	2400
RDG1330A	1.250	11	0.120	ABS	2500
RDG1335C	1.250	12	0.109	ABS	2500
RDG1340A	1.250	14	0.083	ABS	2300
RDG1345A	1.250	16	0.065	ABS	2300
RDG1350D	1.250	18	0.049	ABS	2300
RDG1355A	1.375	13	0.095	ABS	1100
RDG1360A	1.375	14	0.083	ABS	2000
RDG1365A	1.375	16	0.065	ABS	2000
RDG1370C	1.375	18	0.049	ABS	2000
RDG1375A	1.375	20	0.035	ABS	1600
RDG1380A	1.500	12	0.109	ABS	1200
RDG1385A	1.500	14	0.083	ABS	1500
RDG1390A	1.500	16	0.065	ABS	1500
RDG1394B	1.500	18	0.049	Butyrate	1400
RDG1395D	1.500	18	0.049	ABS	1500
RDG1400A	1.500	19	0.042	ABS	1500
RDG1405A	1.500	20	0.035	ABS	1500
RDG1408B	1.625	16	0.065	Nylon	1400
RDG1410A	1.625	18	0.049	ABS	1000
RDG1415A	1.750	11	0.120	ABS	1100
RDG1420A	1.750	14	0.083	ABS	1100
RDG1425A	1.750	16	0.065	ABS	1100
RDG1430A	1.750	18	0.049	ABS	1100
RDG1435A	1.750	20	0.035	ABS	1000
RDG1445A	2.000	11	0.120	ABS	850
RDG1455A	2.000	16	0.065	ABS	850
RDG1460A	2.000	18	0.049	ABS	850
RDG1465A	2.000	20	0.035	ABS	1000
RDG1470A	2.500	18	0.049	ABS	500
RDG1475A	3.000	13	0.095	ABS	500

**LRDR Series**  
**Round Ribbed Tube Inserts**



**Specifications:**

- Material: High-Density Polyethylene
- Color: Black with Matte Finish

**Features:**

- Designed for light load-bearing applications or cosmetic finishing



Item No.	Tube O.D.		Tube Gauge	Wall Thickness In	Bulk Pack Qty
	In	mm			
LRDR071620A	0.750	19.05	16-20	0.035-0.065	5500
LRDR081420A	0.875	22.22	14-20	0.035-0.083	3500
LRDR101420A	1.000	25.40	14-20	0.035-0.083	2800

Item No.	Tube O.D.		Tube Gauge	Wall Thickness In	Bulk Pack Qty
	In	mm			
LRDR111418A	1.125	28.57	14-18	0.035-0.083	2200
LRDR121620A	1.250	31.75	16-20	0.035-0.065	1500



# ROUND TUBE INSERT GLIDES

## RLI Series

### Round Low Profile Insert Glides



**Specifications:**

- Material: Low-Density Polyethylene
- Color: Black

**Features:**

- Lightweight insert glides present a low-cost option for neatly finishing steel tubes

Item No.	Tube O.D.		Tube Gauge	Wall Thickness	Bulk Pack Qty
	In	mm			
RLI0516A	0.500	12.70	16	0.065	10000
RLI0518A	0.500	12.70	18	0.049	10000
RLI0520A	0.500	12.70	20	0.035	10000
RLI0616A	0.625	15.87	16	0.065	10000
RLI0618A	0.625	15.87	18	0.049	10000
RLI0716A	0.750	19.05	16	0.065	5000
RLI0718A	0.750	19.05	18	0.049	5000
RLI0816A	0.875	22.22	16	0.065	5000
RLI0818A	0.875	22.22	18	0.049	5000
RLI1016A	1.000	25.40	16	0.065	5000

Item No.	Tube O.D.		Tube Gauge	Wall Thickness	Bulk Pack Qty
	In	mm			
RLI1018A	1.000	25.40	18	0.049	5000
RLI1116A	1.125	28.57	16	0.065	4000
RLI1118A	1.125	28.57	18	0.049	4000
RLI1216A	1.250	31.75	16	0.065	2500
RLI1218A	1.250	31.75	18	0.049	2500
RLI1516A	1.500	38.10	16	0.065	2000
RLI1518A	1.500	38.10	18	0.049	2000
RLI1716A	1.750	44.45	16	0.065	1500
RLI1718A	1.750	44.45	18	0.049	1500
RLI2018A	2.000	50.80	18	0.049	800

## RLP Series

### Round Metric Low Profile Insert Glides



**Specifications:**

- Material: Low Density Polyethylene
- Color: Black

**Features:**

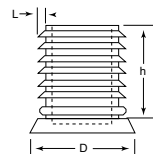
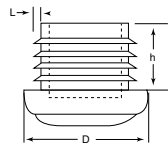
- Low profile design allows for a finishing component with limited space

Item No.	Tube OD		Wall Thickness		Bulk Pack Qty
	mm	Tube Gauge	mm		
466562	10	16-20	0.80 - 1.50		5000
466563	12	14-16	1.50 - 2.00		5000
466564	14	14-16	1.50 - 2.00		5000
RDR466565A	15	16-20	0.80 - 2.00		2000
466566	16	16-20	0.80 - 2.00		2500
466567	18	16-20	0.80 - 2.00		2000
466568	19	16-20	0.80 - 2.00		2000
466569	20	13-20	0.80 - 2.50		2000
466570	22	13-20	1.00 - 2.50		2000
466571	24	13-20	1.00 - 2.50		2000
466572	25	13-20	1.00 - 2.50		3500

Item No.	Tube OD		Wall Thickness		Bulk Pack Qty
	mm	Tube Gauge	mm		
466573	28	13-20	0.80 - 2.50		3000
466574	30	13-20	0.80 - 2.50		2500
466575	32	13-20	0.80 - 2.50		2250
466576	35	11-19	1.00 - 3.00		1750
466577	38	11-19	1.00 - 3.00		1500
466578	40	11-19	1.00 - 3.00		1500
460789	42	13-20	0.80 - 2.50		1250
466579	45	11-19	1.00 - 3.00		1000
466580	50	13-20	1.00 - 2.50		800
466581	55	11-19	1.00 - 3.00		700
466582	60	11-16	1.50 - 3.00		500

## GSB & GFB Series

### Round Ribbed Inserts Felt and Steel Based



**Specifications:**

- Insert Material: Nylon
- Base Material: See Chart
- Color: Black

Material	Felt	Steel
Surface Uses	Wood and other soft surfaces	Smooth Surfaces

GFB Series

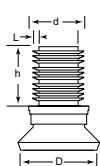
GSB Series

Item No.	Bulk Pack Qty	Item No.	Bulk Pack Qty	D		h		L= Fits	
				In	mm	In	mm	Wall (In)	Gauge
GFB465535A	1750	—	—	0.748	19.00	0.748	19.00	0.060-0.090	14-17
GFB465536A	1750	GSB465537A	2000	0.787	20.00	0.748	19.00	0.060-0.090	14-17
GFB465538A	2500	GSB465539A	1750	0.866	22.00	0.748	19.00	0.060-0.090	14-17
GFB465540A	2250	GSB465541A	1250	0.984	25.00	0.748	19.00	0.060-0.090	14-17
GFB465542A	1500	GSB465543A	1000	1.102	28.00	0.748	19.00	0.060-0.090	14-17
GFB465544A	1250	GSB465545A	900	1.181	30.00	0.748	19.00	0.060-0.090	14-17
GFB465546A	1250	GSB465547A	800	1.260	32.00	0.748	19.00	0.060-0.090	14-17

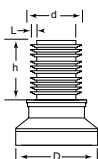
# ROUND TUBE INSERT GLIDES



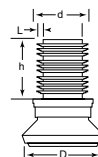
## TSNB, TSFB & TSSB SERIES Round Ribbed Inserts Nylon, Felt & Steel Based



TSNB Series



TSSB Series



TSFB Series



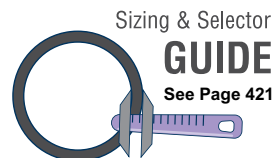
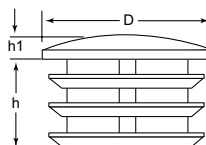
Specifications:

- Insert Material: Nylon
- Base Material: See Chart
- Color: Black

Material	Nylon	Felt	Steel
Surface Uses	Hard Surfaces	Wood and other soft surfaces	Smooth Surfaces

Item No.	Item No.	Item No.	D		d		h		L= Fits				
TSNB Series Nylon Based	Bulk Pack Qty	TSFB Series Felt Based	Bulk Pack Qty	TSSB Series Steel Based	Bulk Pack Qty	In	mm	In	mm	In	mm	Wall (In)	Gauge
TSNB465550A	1250	TSFB465548A	1500	TSSB465549A	1250	0.984	25.00	0.748	19.00	0.965	24.50	0.060-0.090	14-17
TSNB465553A	1000	TSFB465551A	1250	TSSB465552A	1250	0.984	25.00	0.787	20.00	0.965	24.50	0.060-0.090	14-17
TSNB465556A	1000	TSFB465554A	1000	TSSB465555A	1000	0.984	25.00	0.866	22.00	0.965	24.50	0.060-0.090	14-17
TSNB465559A	800	TSFB465557A	800	TSSB465558A	1000	0.984	25.00	0.984	25.00	0.965	24.50	0.060-0.090	14-17
TSNB465562A	800	TSFB465560A	800	TSSB465561A	1250	0.984	25.00	1.102	28.00	0.965	24.50	0.060-0.090	14-17
TSNB465565A	1000	TSFB465563A	625	TSSB465564A	625	1.181	30.00	0.748	19.00	0.965	24.50	0.060-0.090	14-17
TSNB465568A	1000	TSFB465566A	500	TSSB465567A	500	1.181	30.00	0.787	20.00	0.965	24.50	0.060-0.090	14-17
TSNB465571A	800	TSFB465570A	400	TSSB465569A	400	1.181	30.00	0.866	22.00	0.965	24.50	0.060-0.090	14-17
TSNB465574A	800	-	-	TSSB465572A	400	1.181	30.00	0.984	25.00	0.965	24.50	0.060-0.090	14-17
TSNB465577A	800	TSFB465575A	350	TSSB465576A	375	1.181	30.00	1.102	28.00	0.965	24.50	0.060-0.090	14-17

## RDP Series Round Ribbed Tube Inserts Chrome Finish



See Page 421



Specifications:

- Material: Low-Density Polyethylene
- Color: Black with High-Polished Metal-Finish Shell

Features:

- Polished metallic finish provides enhanced aesthetic appearance
- Horizontal ribbing allows for built-in flexibility to fit multiple tube gauges

Item No.	D		h		h1		Fits		Bulk Pack Qty
	In	mm	In	mm	In	mm	Gauge (In)	mm	
RDP465335A	0.512	13.00	0.315	8.00	0.079	2.00	14-19 (.040-.080)	1.0-2.0	1000
RDP463586A	0.630	16.00	0.394	10.00	0.079	2.00	14-19 (.040-.080)	1.0-2.0	2000
RDP465333A	0.709	18.00	0.394	10.00	0.079	2.00	14-19 (.040-.080)	1.0-2.0	2000
RDP465336A	0.750	19.05	0.394	10.00	0.079	2.00	14-19 (.040-.080)	1.0-2.0	1000
RDP465338A	0.787	20.00	0.394	10.00	0.118	3.00	14-19 (.040-.080)	1.0-2.0	3000
RDP465334A	0.866	22.00	0.433	11.00	0.118	3.00	14-19 (.040-.080)	1.0-2.0	3000
RDP462994A	0.984	25.00	0.591	15.00	0.118	3.00	14-19 (.040-.080)	1.0-2.0	2000
RDP463587A	1.102	28.00	0.591	15.00	0.118	3.00	14-19 (.040-.080)	1.0-2.0	500
RDP463020A	1.181	30.00	0.630	16.00	0.118	3.00	14-19 (.040-.080)	1.0-2.0	500
RDP463588A	1.260	32.00	0.630	16.00	0.118	3.00	14-19 (.040-.080)	1.0-2.0	250
RDP463021A	1.378	35.00	0.630	16.00	0.118	3.00	14-19 (.040-.080)	1.0-2.0	500
RDP465337A	1.496	38.00	0.630	16.00	0.118	3.00	14-19 (.040-.080)	1.0-2.0	250
RDP463022A	1.575	40.00	0.630	16.00	0.118	3.00	14-19 (.040-.080)	1.0-2.0	250
RDP465339A	1.772	45.00	0.630	16.00	0.118	3.00	14-19 (.040-.080)	1.0-2.0	250
RDP463023A	1.969	50.00	0.472	12.00	0.118	3.00	16-17 (.065 - 0.058)	1.50	200
RDP465332A	2.362	60.00	0.472	12.00	0.118	3.00	16-17 (.065 - 0.058)	1.50	200



**ROUND TUBE INSERT GLIDES****DFRD Series****Round Domed Tube Inserts**

## Specifications:

- Material: Low-Density Polyethylene
- Color: Black

## Features:

- Can accommodate any degree of leg angle, while the horizontal ribbed design has built-in flexibility to fit multiple tube gauge sizes

Item No.	Tube O.D.		Tube Gauge	Wall Thickness In	Bulk Pack Qty
	In	mm			
<b>DFRD111522A</b>	0.875	22.22	14-20	0.035-0.083	2000
<b>DFRD121620A</b>	1.250	31.75	14-18	0.049-0.083	2000

**BI & LBI Series****Round Domed Tube Glides**

## Specifications:

- Material: Refer to Chart
- Color: Black or Natural

## Features:

- Provides a neat finish for steel tubing

Item No.	Material	Color	Tube O.D.		Tube Gauge	Wall Thickness In	Bulk Pack Qty
			In	mm			
<b>BI1000A</b>	ABS	Black	0.625	15.88	18	0.049	10000
<b>BI1100A</b>	ABS	Black	0.750	19.05	15	0.072	3000
<b>LBI1130A</b>	LDPE	Black	0.750	19.05	16	0.065	5500
<b>LBI1132A</b>	LDPE	Black	0.750	19.05	16	0.065	5500
<b>BI1110A</b>	ABS	Black	0.875	22.23	14	0.083	3500
<b>LBI1140A</b>	LDPE	Black	0.875	22.23	14	0.083	3500
<b>BI1120A</b>	ABS	Black	0.875	22.23	16	0.065	3500
<b>LBI130A</b>	ABS	Black	0.875	22.23	20	0.035	4000
<b>BI1140A</b>	ABS	Black	1.000	25.40	14	0.083	2700
<b>BI1150A</b>	ABS	Black	1.000	25.40	16	0.065	2500
<b>LBI1180A</b>	LDPE	Black	1.000	25.40	16	0.065	3000
<b>BI1160A</b>	ABS	Black	1.000	25.40	18	0.049	2500

Item No.	Material	Color	Tube O.D.		Tube Gauge	Wall Thickness In	Bulk Pack Qty
			In	mm			
<b>LBI1190A</b>	LDPE	Black	1.000	25.40	18	0.049	3100
<b>BI1170A</b>	ABS	Black	1.000	25.40	20	0.035	2600
<b>BI1180A</b>	ABS	Black	1.125	28.58	12	0.109	2000
<b>BI1200A</b>	ABS	Black	1.125	28.58	16	0.065	2500
<b>BI1210A</b>	ABS	Black	1.125	28.58	18	0.049	1600
<b>BI1220A</b>	ABS	Black	1.228	31.19	14	0.083	1600
<b>BI1230A</b>	ABS	Black	1.250	31.75	16	0.065	1500
<b>BI1240A</b>	ABS	Black	1.375	34.93	14	0.083	1200
<b>BI1250A</b>	ABS	Black	1.500	38.10	11	0.120	1000
<b>BI1260A*</b>	ABS	Black	1.500	38.10	14	0.083	1000
<b>BI1270A</b>	ABS	Black	1.500	38.10	16	0.065	1000

\* This part has a textured (not polished) finish

**RAG Series****Round Angled Tube Inserts**

## Specifications:

- Material: Nylon
- Color: Black or Natural

## Features:

- Ideal for applications with fixed leg angles
- Round angle insert glides fit flush with tubing outer dimensions for a clean, finished look
- Ideal for load bearing applications

Item No.	Item No.	Bulk Pack Qty	Tube O.D. In	Tube Gauge	Wall Thickness In	Degree
<b>RAG1220A</b>	<b>RAG1220B</b>	2500	0.750	16	0.065	25.5°
<b>RAG1240A</b>	<b>RAG1240B</b>	3500	0.875	16	0.065	19°
<b>RAG1260A</b>	<b>RAG1260B</b>	3500	0.875	17	0.058	19°
<b>RAG1270A</b>	<b>RAG1270B</b>	3200	1.000	16	0.065	12°
—	<b>RAG1280B</b>	3000	1.000	16	0.065	19°
<b>RAG1310A</b>	<b>RAG1310B</b>	3000	1.000	18	0.049	12°

Item No.	Item No.	Bulk Pack Qty	Tube O.D. In	Tube Gauge	Wall Thickness In	Degree
—	<b>RAG1320B</b>	3000	1.000	18	0.049	19°
<b>RAG1325A</b>	<b>RAG1325B</b>	2000	1.125	16	0.065	15°
<b>RAG1340A</b>	<b>RAG1340B</b>	1800	1.250	16	0.065	15°
<b>RAG1350A</b>	<b>RAG1350B</b>	900	1.250	17	0.058	7°
<b>RAG1360A</b>	<b>RAG1360B</b>	1200	1.250	18	0.049	15°
<b>RAG1375A</b>	<b>RAG1375B</b>	900	1.500	16	0.065	19°

## ROUND TUBE CAPS



### HLD Series High Line Domed Ferrule Caps



**Specifications:**

- Material: Elastomeric Polyethylene
- Color: Black

**Features:**

- High-line domed caps are tall and durable
- Ideal for non-skid applications. (These caps have a thinner wall section resulting in ease of installation)

Item No.		Tube O.D.		Bulk Pack Qty
Black	White	In	mm	
HLD0750A	HLD0750C	0.750	19.05	1100
HLD0875A	HLD0875C	0.875	22.22	1100
HLD1000A	HLD1000C	1.000	25.40	2000

### HDC Series Heavy Duty Ferrule Caps



**Specifications:**

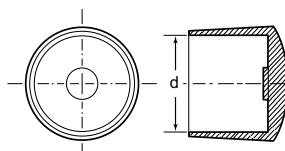
- Material: Low-Density Polyethylene
- Color: Black

**Features:**

- Style A – Low-silhouette cap for general applications (1/2" height)
- Style B – High-line cap for heavy-duty applications (1" height)
- Style C – Heavy-duty caps, designed for institutional applications, incorporate a thick internal ledge to resist cut-thru by sharp tubing ends (1" height)

Item No.	To Fit Tube Size		Style	Bulk Pack Qty
	In	mm		
HDC0375A	0.375	9.53	B	10000
HDC0750A	0.750	19.05	A	6500
HDC0875A	0.875	22.23	B	3000
HDC1125A	1.125	28.58	C	650
HDC1250A	1.250	31.75	A	1800
HDC1500A	1.500	38.10	A	1300

### FRD Series Round Ferrule Caps



**Specifications:**

- Material: Low-Density Polyethylene

**Features:**

- Provides a neat finish to products manufactured from tubular steel

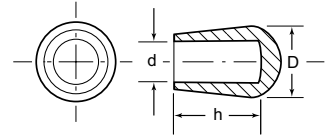
Item No.	d	Bulk Pack Qty
FRD0437A	0.437	10000
FRD0500A	0.500	10000
FRD0625A	0.625	5000
FRD0750A	0.750	4000
FRD0875A	0.875	2500
FRD1000A	1.000	1500

Item No.	d	Bulk Pack Qty
FRD1125A	1.125	1000
FRD1250A	1.250	1000
FRD1500A	1.500	500
FRD1750A	1.750	500
FRD2000A	2.000	300
FRD3000A	3.000	150

# END CAPS

**FREE  
SAMPLES  
AVAILABLE**

Call or  
go online!

**ROUND TUBE CAPS****FTP Series****Round Tapered Ferrule Caps**

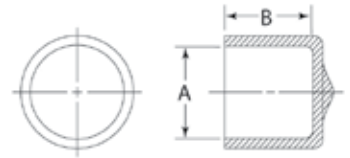
## Specifications:

- Material: PVC or LDPE
- Color: Black

## Features:

- Tapered ferrules are often used as a safety cap on protruding steel rods or bars

Item No.	d In	h In	D In	Material	Bulk Pack Qty
FTP0187A	0.187	0.468	0.406	PVC	10000
FTP0250A	0.250	0.468	0.406	PVC	10000
FTP0312A	0.312	0.562	0.500	PVC	10000
FTP0312LPA	0.312	0.906	0.516	LDPE	5000
FTP0375A	0.375	0.625	0.594	PVC	5000
FTP0500LPA	0.500	0.906	0.735	LDPE	4000

**DM Series****Round Vinyl End Caps**

## Specifications:

- Material: Vinyl (PVC)
- Color: White
- Temperature Range: Up to 350°F (176°C)

## Features:

- Designed to fit standard tube dimension
- Glossy Finish for attractive finish

Item No.	Shape	A In	B In	Bulk Pack Qty
DM0750-1H	Round	3/4	1	2500
DM0875-1G	Round	7/8	1	2500
DM1000-1C	Round	1	1	2000

**RSC Series****Round End Caps**

## Specifications:

- Material: Low-Density Polyethylene (RSC)
- Elastomeric Polyethylene (LLD)
- Color: Black



## Features:

- Slenda™ cap is an industry standard for light-duty applications
- An integrated step lead permits fast positioning and quick assembly for an economical and attractive way of finishing the end of a rod or tube
- The LLD caps have a thick rounded base for long wear and use on a wide range of leg angles

Item No.	To Fit Tube Size		Bulk Pack Qty
	In		
RSC0375A	0.375		12000
RSC0500A	0.500		7000
RSC0625A	0.625		5000
RSC0750A	0.750		3000
RSC0875A	0.875		3000
RSC1000A	1.000		2500
LLD1000A	1.000		1500
RSC1125A	1.125		1600
RSC1250A	1.250		1800

**BC Series****Round Ball Caps**

## Specifications:

- Material: Low-Density Polyethylene
- Color: Black

## Features:

- Ball caps are a popular style of a heavy-duty glide in which the ball will greatly enhance the leg design of a given application, as well as accommodate a wide variety of leg angles
- Ball caps may also be used as a decorative top or finial and maintain an excellent press fit



Item No.	Tube O.D.		Ball O.D.		Bulk Pack Qty
	In	mm	In	mm	
BC010A	0.312	7.92	0.625	15.87	10000
BC015A	0.500	12.70	0.875	22.22	4300
BC020A	0.625	15.87	1.000	25.40	3000



**TR Series**  
**Anti-Rattle Tubing Reducers**



**Specifications:**

- Material: LDPE
- Color: Gray or Black

**Features:**

- Ideal coupling for different sized telescope tubes

Item No.	Color	To Fit Tube	Coupling I.D.		Reducer I.D.		Bulk Pack Qty
			In	mm	In	mm	
TR1000A	Gray	11/16 X 3/4	0.745	18.92	0.680	17.27	4000
TR1000B	Black	11/16 X 3/4	0.745	18.92	0.680	17.27	4000
TR1050B	Gray	3/4 X 7/8	0.865	21.97	0.740	18.80	2500
TR1050C	Black	3/4 X 7/8	0.865	21.97	0.740	18.80	2500
TR1099C	Gray	1 X 7/8	0.985	25.02	0.887	22.53	1500
TR1099B	Black	1 X 7/8	0.985	25.02	0.887	22.53	1500

Item No.	Color	To Fit Tube	Coupling I.D.		Reducer I.D.		Bulk Pack Qty
			In	mm	In	mm	
TR1100C	Gray	1 X 7/8	0.995	25.27	0.873	22.17	1500
TR1100B	Black	1 X 7/8	0.995	25.27	0.873	22.17	1500
TR1200A	Gray	1-1/8 X 1	1.115	28.32	1.005	25.53	2100
TR1200B	Black	1-1/8 X 1	1.115	28.32	1.005	25.53	2100
TR1300A	Gray	1-3/4 X 1-1/2	1.738	44.15	1.490	37.85	1100
TR1300B	Black	1-3/4 X 1-1/2	1.738	44.15	1.490	37.85	1100

**RTR Series**  
**Tube Connectors**



Sizing & Selector  
**GUIDE**  
 See Page 421

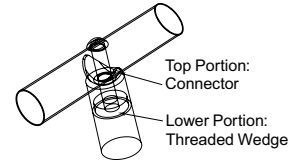


**Specifications:**

- Material: Nylon
- Color: Natural

**Features:**

- Rigidly joins metal or wood tubing together
- Eliminates the cost of welding
- Designed for easy assembly



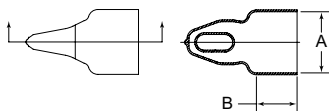
**Tube Connector**

Item No.	Tube Size In	Tube Gauge	Matching Part	Bulk Pack Qty
RTR1000A	0.750	18	RTR1001A	2300
RTR1100A	1.000	16	RTR1101A	2300
RTR1200A	1.000	18	RTR1201A	2300
RTR1300A	1.000	20	—	2200

**Threaded Bushing**

Item No.	Thread	Matching Part	Bulk Pack Qty
RTR1001A	1/4-20	RTR1000A	2300
RTR1101A	1/4-20	RTR1100A	2300
RTR1201A	1/4-20	RTR1200A	6000

**DMHC Series**  
**Round Vinyl Hanger Caps**



**Specifications:**

- Material: Vinyl (PVC)
- Color: Black
- Temperature Range: Up to 350°F (176°C)
- Maximum Length: 5-1/2 inches

**Features:**

- Designed to allow your tube application to hang from a peg hook or similar fixture
- Flexible material can stretch onto slightly larger diameters for a snug fit without tearing, splitting or shredding
- The glossy and attractive finish makes this part ideal for use as a decorative end cap

Item No.	Bulk Pack Qty	Item No.	Bulk Pack Qty	Item No.	Bulk Pack Qty	A	
						In	mm
B = 1/2"		B = 1"		B = 1-1/2"			
DMHC1000-1/2A	700	DMHC1000-1A	400	DMHC1000-1-1/2A	500	1.000	25.40
DMHC1250-1/2A	700	DMHC1250-1A	400	DMHC1250-1-1/2A	500	1.250	31.75
DMHC1500-1/2A	400	DMHC1500-1A	400	DMHC1500-1-1/2A	500	1.500	38.10



# SQUARE INSERT GLIDES

## SQR Series

### Square Multi-Gauge Ribbed Tube Inserts

**Specifications:**

- Material: LDPE
- Surface Finish: Polished and Textured

**Features:**

- Ideal for aesthetic or light-duty load bearing applications
- Perimeter rib design allows for easy assembly and a secure fit
- Used on a wide range of furniture and metal tubing applications



## Imperial

Black Item No.		White Item No.		Tube OD In	Gauge	Wall Thickness In	Bulk Pack Qty
Polished	Textured	Polished	Textured				
SQR051620A	—	—	—	0.500	16-20	0.035-0.065	10000
SQR111193A	SQR111211A	SQR111229A	—	0.500	14-20	0.035-0.083	2500
SQR061620C	—	—	—	0.625	16-20	0.035-0.065	5000
SQR111195A	SQR111213A	—	—	0.625	12-20	0.035-0.109	2500
SQR111196A	SQR111214A	SQR111232A	—	0.750	12-20	0.035-0.109	2500
SQR071620C	—	—	—	0.750	16-20	0.035-0.065	5000
SQR081618A	—	—	—	0.875	16-18	0.049-0.065	4000
SQR101014A	—	SQR101014D	—	1.000	10-14	0.083-0.134	2000
SQR101420D	—	—	—	1.000	14-20	0.035-0.083	2500
SQR111200A	SQR111218A	SQR111235A	—	1.000	11-19	0.042-0.120	2500
SQR111620A	—	—	—	1.125	16-20	0.035-0.065	2000
—	—	SQR199150A	—	1.125	14-20	0.035-0.083	2000
SQR121014A	—	—	—	1.250	10-14	0.083-0.134	2000
SQR121420A	—	—	—	1.250	14-20	0.035-0.083	2000
—	—	—	SQR111616A	1.250	11-19	0.042-0.120	1500
SQR131016A	—	—	—	1.375	10-16	0.065-0.134	900
SQR111202A	SQR111220A	SQR111238A	—	1.375	11-19	0.042-0.120	1500
SQR151014A	—	—	—	1.500	10-12	0.083-0.109	1000
SQR111503A	SQR111541A	SQR111617A	—	1.500	12-19	0.042-0.120	1000
SQR151418A	—	—	—	1.500	14-18	0.049-0.083	1000
SQR171014A	—	SQR171014C	—	1.750	10-14	0.083-0.134	500
SQR171418A	—	SQR171418C	—	1.750	14-18	0.049-0.083	500
—	SQR200508A	—	—	2.000	5-8	0.164-0.209	500
SQR201014A	—	—	—	2.000	10-14	0.083-0.134	350
SQR201418A	—	—	—	2.000	14-18	0.049-0.083	500
SQR111206A	SQR111224A	SQR111242A	—	2.000	11-19	0.042-0.120	500
—	SQR251014A	—	—	2.500	10-14	0.083-0.134	250
SQR111504A	SQR111542A	—	—	2.500	11-19	0.042-0.120	250
—	SQR300508A	—	—	3.000	5-8	0.164-0.209	200
—	SQR301014A	—	—	3.000	10-14	0.083-0.134	200
SQR111507A	SQR111545A	—	SQR111621A	3.000	8-14	0.083-0.164	200
SQR3511B	—	—	—	3.500	8-11	0.120-0.164	70
—	SQR400711B	—	—	4.000	7-11	0.120-0.179	70
—	SQR500711A	—	—	5.000	7-11	0.120-0.179	48
—	SQR60188A	—	—	6.000	10-14	0.083-0.134	26

## Metric

Black Item No.		Tube OD In	Gauge	Wall Thickness In	Bulk Pack Qty
Polished	Textured				
SQR111197A	SQR111215A	20.00	12-20	0.035-0.109	2500
SQR111198A	SQR111216A	22.00	12-20	0.035-0.109	2500
SQR111199A	SQR111217A	25.00	12-20	0.035-0.109	2500
SQR111502A	SQR111540A	32.00	11-19	0.042-0.120	1500
SQR111203A	SQR111221A	40.00	11-19	0.042-0.120	500
SQR111204A	SQR111222A	45.00	11-19	0.042-0.120	500

Black Item No.		Tube OD In	Gauge	Wall Thickness In	Bulk Pack Qty
Polished	Textured				
SQR111205A	SQR111223A	50.00	11-19	0.042-0.120	500
SQR111207A	SQR111225A	60.00	11-19	0.042-0.120	250
SQR111810A	SQR111811A	60.00	9-14	0.083-0.149	250
SQR111506A	SQR111544A	75.00	8-14	0.083-0.164	200
SQR111209A	SQR111227A	80.00	8-14	0.083-0.164	150
SQR111210A	SQR111228A	100.00	8-14	0.083-0.164	100

## SIG Series

### Square Load Bearing Glides

**Specifications:**

- Material: ABS or Butyrate
- Color: Black or Clear

**Features:**

- Suitable for light and heavy-duty applications
- Step lead provides easy installation
- Press fit assures a secure hold in tubing

See page 421 for Sizing and Selector Guide.



Item No.	Tube Size In	Tube Gauge	Material	Wall Thickness In	Color	Bulk Pack Qty
SIG1100A	0.375	16	ABS	0.065	Black	5000
SIG1105A	0.375	19	ABS	0.042	Black	5000
SIG1108A	0.500	14	ABS	0.083	Black	4000
SIG1110A	0.500	16	ABS	0.065	Black	15000
SIG1115A	0.500	18	ABS	0.049	Black	15000
SIG1120A	0.625	16	ABS	0.065	Black	8000
SIG1125A	0.625	17	ABS	0.058	Black	8000
SIG1130A	0.625	18	ABS	0.049	Black	8000
SIG1135A	0.625	20	ABS	0.035	Black	8000
SIG1140A	0.695	18	ABS	0.049	Black	5000
SIG1145A	0.715	18	ABS	0.049	Black	5000
SIG1150A	0.725	11	ABS	0.120	Black	5000

Item No.	Tube Size In	Tube Gauge	Material	Wall Thickness In	Color	Bulk Pack Qty
SIG1155A	0.725	16	ABS	0.065	Black	5000
SIG1160A	0.750	11	ABS	0.120	Black	5800
SIG1165A	0.750	13	ABS	0.095	Black	6000
SIG1170A	0.750	15	ABS	0.072	Black	4000
SIG1175A	0.750	16	ABS	0.065	Black	5500
SIG1180A	0.750	18	ABS	0.049	Black	5500
SIG1185A	0.750	19	ABS	0.042	Black	5500
SIG1190A	0.750	20	ABS	0.035	Black	5500
SIG1200A	0.812	14	ABS	0.083	Black	4500
SIG1205A	0.812	16	ABS	0.065	Black	4500
SIG1210A	0.812	18	ABS	0.049	Black	4500
SIG1215A	0.875	11	ABS	0.120	Black	5000

(Continued on Next Page)



# SQUARE INSERT GLIDES



## SIG Series Square Load Bearing Glides (continued)



Item No.	Tube Size		Material	Wall Thickness In	Color	Bulk Pack Qty
	In	Gauge				
SIG1220C	0.875	16	ABS	0.065	Black	4000
SIG1225A	0.875	18	ABS	0.049	Black	4000
SIG1235A	1.000	11	ABS	0.120	Black	3200
SIG1240A	1.000	14	ABS	0.083	Black	3000
SIG1244C	1.000	16	Butyrate	0.065	Clear	2800
SIG1245A	1.000	16	ABS	0.065	Black	2800
SIG1250A	1.000	17	ABS	0.058	Black	2800
SIG1255A	1.000	18	ABS	0.049	Black	2800
SIG1260A	1.000	20	ABS	0.035	Black	3200
SIG1265A	1.000	22	ABS	0.035	Black	3200
SIG1270A	1.125	16	ABS	0.065	Black	2200
SIG1275A	1.125	18	ABS	0.049	Black	2200
SIG1280A	1.250	11	ABS	0.120	Black	2200
SIG1285A	1.250	12	ABS	0.109	Black	2000
SIG1290A	1.250	14	ABS	0.083	Black	1500
SIG1295A	1.250	16	ABS	0.065	Black	1700
SIG1300A	1.250	18	ABS	0.049	Black	1800
SIG1302B	1.255	19	Butyrate	0.042	Clear	1500

Item No.	Tube Size		Material	Wall Thickness In	Color	Bulk Pack Qty
	In	Gauge				
SIG1305A	1.500	10	ABS	0.134	Black	1800
SIG1310A	1.500	11	ABS	0.120	Black	1200
SIG1315A	1.500	12	ABS	0.109	Black	1200
SIG1320C	1.500	14	ABS	0.083	Black	1300
SIG1325A	1.500	16	ABS	0.065	Black	1100
SIG1330A	1.500	18	ABS	0.049	Black	1200
SIG1335A	1.500	20	ABS	0.035	Black	1200
SIG1340A	1.750	11	ABS	0.120	Black	1000
SIG1345A	1.750	14	ABS	0.083	Black	1000
SIG1350A	1.750	16	ABS	0.065	Black	900
SIG1353C	2.000	11	ABS	0.120	Black	1000
SIG1365A	2.000	12	ABS	0.109	Black	1000
SIG1370A	2.000	14	ABS	0.083	Black	1000
SIG1375A	2.000	16	ABS	0.065	Black	1000
SIG1380A	2.000	18	ABS	0.049	Black	1000
SIG1385A	2.500	11	ABS	0.120	Black	500
SIG1390A	3.000	11	ABS	0.120	Black	500

## SQS Series Square Tube Insert Glides



Specifications:

- Material: Low-Density Polyethylene
- Color: Black

Features:

- Ideal for general purpose tube-fitting applications

Item No.	Tube Size		Tube Gauge	Bulk Pack Qty
	In	mm		
SQS5006A	5.000	127.00	6	50
SQS6006A	6.000	152.40	6	40



## LSQR Series Square Ribbed Tube Inserts



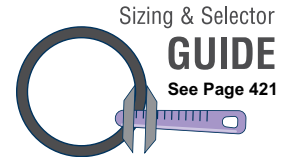
Specifications:

- Material: High-Density Polyethylene
- Color: Black with Textured Finish

Features:

- Not recommended for load-bearing applications

Item No.	Tube Size		Tube Gauge	Wall Thickness In	Bulk Pack Qty
	In	mm			
LSQR061620A	0.625	15.87	16-20	0.035-0.065	6000
LSQR071620A	0.750	19.05	16-20	0.035-0.065	4000
LSQR101420A	1.000	25.40	14-20	0.035-0.083	2000
LSQR111620A	1.125	28.32	16-20	0.035-0.065	3000
LSQR121420A	1.250	31.75	14-20	0.035-0.083	1300



## SQC Series Square Heavy Duty End Caps



Specifications:

- Material: Low-Density Polyethylene or ABS\*
- Color: Black

Features:

- End cap style design fits most popular sizes of square tubular steel

Item No.	Tube Size		Bulk Pack Qty
	In	mm	
SQC0500A	0.500	12.70	5000
SQC1000A*	1.000	25.40	1700
SQC1250A	1.250	31.75	1200
SQC3000A	3.000	76.20	100





# SQUARE INSERT GLIDES

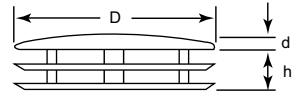
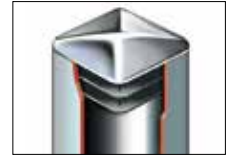
## SQP Series Square Ribbed Tube Inserts Chrome Finish

**Specifications:**

- Material: Low-Density Polyethylene
- Color: Black with High-Polished Metal-Finish Shell

**Features:**

- Polished metallic finish provides enhanced aesthetic appearance
- Horizontal ribbing allows for built-in flexibility to fit multiple tube gauges



Item No.	D		d		h		Gauge (In)	Fits	Bulk Pack Qty
	In	mm	In	mm	In	mm			
SQP465341A	0.625	15.88	0.079	2.00	0.354	9.00	14-19 (.040-.080)	1.0 - 2.0	1000
SQP460959A	0.709	18.00	0.079	2.00	0.354	9.00	14-19 (.040-.080)	1.0 - 2.0	1000
SQP465340A	0.750	19.05	0.079	2.00	0.394	10.00	14-19 (.040-.080)	1.0 - 2.0	1000
SQP465343A	1.000	25.40	0.079	2.00	0.394	10.00	14-19 (.040-.080)	1.0 - 2.0	1000
SQP465342A	1.181	30.00	0.118	3.00	0.394	10.00	14-19 (.040-.080)	1.0 - 2.0	1000
SQP460964A	1.375	35.00	0.118	3.00	0.472	12.00	14-19 (.040-.080)	1.0 - 2.0	1000
SQP465344A	1.575	40.00	0.118	3.00	0.472	12.00	14-19 (.040-.080)	1.0 - 2.0	1000

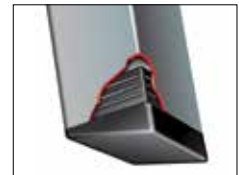
## AFSQ Series Square Angled Tube Inserts

**Specifications:**

- Material: Low-Density Polyethylene
- Color: Black

**Features:**

- These angled feet are ideal for stacking chairs, children's play equipment and step ladders



Item No.	Tube Size		Tube Gauge	Wall Thickness In	Degree	Bulk Pack Qty
	In	mm				
AFSQ07161805A*	0.750	19.05	16-18	0.049-0.065	5°	2500
AFSQ07161825A*	0.750	19.05	16-18	0.049-0.065	25°	2500
AFSQ08161805A	0.875	22.22	16-18	0.049-0.065	5°	2500
AFSQ08161825A*	0.875	22.22	16-18	0.049-0.065	25°	2500
AFSQ10162015A	1.000	25.40	16-20	0.035-0.065	15°	1000

\* Has a built-in bumper

## SRG Series Square Domed Tube Glides

**Specifications:**

- Material: ABS
- Color: Black

**Features:**

- Ideal for applications with variable leg angles
- Square rocker glides fit flush with tubing outer dimensions for a clean, finished look



Item No.	Tube Size In	Tube Gauge	Wall Thickness In	Bulk Pack Qty
SRG1010A	0.750	16	0.065	4000
SRG1020A	0.750	18	0.049	4000
SRG1030A	0.813	16	0.065	3000
SRG1115A	0.813	17	0.058	4000
SRG1120A	0.813	18	0.049	700
SRG1045A	0.875	16	0.065	3000
SRG1055A	0.875	18	0.049	2700

Item No.	Tube Size In	Tube Gauge	Wall Thickness In	Bulk Pack Qty
SRG1075A	0.940	18	0.049	2700
SRG1080A	1.000	16	0.065	2000
SRG1100A	1.000	18	0.049	2000
SRG1125A	1.250	16	0.065	1100
SRG1135A	1.250	18	0.049	1100
SRG1145A	1.500	18	0.049	1000

## DFSQ Series Square Domed Tube Inserts

**Specifications:**

- Material: Low-Density Polyethylene
- Color: Black

**Features:**

- Can accommodate any degree of leg angle, while the horizontal ribbed design has built-in flexibility to fit multiple tube gauge sizes

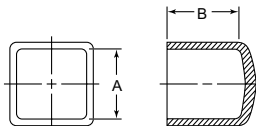


Item No.	Tube Size		Tube Gauge	Bulk Pack Qty
	In	mm		
DFSQ111525A	0.787	20.00	18-25	2500
DFSQ081620A	0.875	22.22	16-20	1750
DFSQ101620A	1.000	25.40	16-20	1250



# SQUARE & RECTANGULAR INSERT GLIDES

## DMSQ Series Square Vinyl End Caps



**Specifications:**

- Material: Vinyl (PVC)
- Color: Black and White
- Temperature Range: Up to 350°F (176°C)

**Features:**

- Designed to fit the most popular sizes of square tubular steel
- Material flexibility will stretch to fit normal tube diameter tolerance variations
- Glossy and attractive finish makes this part ideal for use as a decorative end cap

Black Item No.		Black Item No.		White Item No.		A	
1/2" Length (B)	Bulk Pack Qty	1" Length (B)	Bulk Pack Qty	1" Length (B)	Bulk Pack Qty	In	mm
DMSQ0250-1/2A	5000	DMSQ0250-1A	6500	—	—	0.250	6.35
DMSQ0312-1/2A	5000	DMSQ0312-1A	5000	—	—	0.312	7.92
DMSQ0375-1/2A	5000	DMSQ0375-1A	5000	—	—	0.375	9.52
DMSQ0437-1/2A	5000	DMSQ0437-1A	5000	—	—	0.437	11.09
DMSQ0500-1/2A	5000	DMSQ0500-1A	4000	—	—	0.500	12.70
DMSQ0625-1/2A	3500	DMSQ0625-1A	2000	—	—	0.625	15.87
DMSQ0750-1/2A	3500	DMSQ0750-1A	2000	DMSQ0750-1C	2000	0.750	19.05
DMSQ1000-1/2A	2000	DMSQ1000-1A	1500	DMSQ1000-1C	1500	1.000	25.40
DMSQ1250-1/2A	2000	DMSQ1250-1A	1000	—	—	1.250	31.75
DMSQ1500-1/2A	1500	DMSQ1500-1A	500	—	—	1.500	38.10
DMSQ2000-1/2A	500	DMSQ2000-1A	325	—	—	2.000	50.80

## FSQ Series Square Ferrule End Caps



**Specifications:**

- Material: Low-Density Polyethylene
- Color: Black

**Features:**

- Provides a neat finish to products manufactured from square tubular steel

Item No.	Tube O.D.		Bulk Pack Qty
	In	mm	
FSQ0625A	0.625	15.87	4000
FSQ0875A	0.875	22.22	2000
FSQ1000A	1.000	25.40	1000
FSQ2000A	2.000	50.80	250

## RCR Series Rectangular Ribbed Tube Inserts

**Specifications:**

- Material: Low-Density Polyethylene
- Surface Finish: Polished and Textured

**Features:**

- Perimeter rib design allows for easy assembly and secure fit
- Tube inserts fit a wider gauge range



See pages 388-401 for threaded tube insert glides.

### Imperial

Black Item No.		Black Item No.		White Item No.		White Item No.		Bulk Pack Qty	Tube Size In	Gauge
Polished	Textured	Polished	Textured	Polished	Textured					
RCR111339A	RCR111356A	—	—	—	—	1000	1.000 X 0.500	16-20		
RCR111508A	RCR111546A	—	—	RCR111622A	—	2500	1.375 X 0.625	11-19		
RCR111343A	RCR111360A	RCR111377A	—	—	—	1000	1.500 X 0.750	11-19		
RCR111510A	RCR111548A	—	—	RCR111624A	—	2000	1.500 X 1.000	11-19		
RCR111348A	RCR111365A	RCR111382A	—	—	—	1000	2.000 X 1.000	11-19		
RCR111512A	RCR111550A	—	—	RCR111626A	—	1000	2.000 X 1.250	11-19		
RCR25101618A	—	—	—	—	—	1000	2.500 X 1.000	16-18		
RCR25151216A	—	—	—	—	—	500	2.500 X 1.500	12-16		
RCR111514A	RCR111552A	—	—	RCR111628A	—	250	3.000 X 1.500	8-14		
RCR111516A	RCR111554A	—	—	RCR111630A	—	250	3.000 X 2.000	8-14		

### Metric

Black Item No.		Bulk Pack Qty	Tube Size mm	Gauge
Polished	Textured			
RCR111338A	RCR111355A	2000	25mm X 10mm	16-20
RCR199254A	—	5000	30mm X 10mm	17-20
RCR111340A	RCR111357A	1000	30mm X 15mm	11-19
RCR111341A	RCR111358A	1000	30mm X 20mm	11-19
RCR111509A	RCR111547A	2000	35mm X 20mm	11-19
—	RCR466544A	1000	40mm X 15mm	14-17
RCR111344A	RCR111361A	1000	40mm X 20mm	11-19
RCR111511A	RCR111549A	1500	40mm X 25mm	8-14
RCR111481A	RCR111482A	500	60mm X 30mm	11-19
RCR111802A	RCR111803A	500	60mm X 40mm	11-19
RCR111351A	RCR111368A	500	60mm X 40mm	8-14

Black Item No.		Bulk Pack Qty	Tube Size mm	Gauge
Polished	Textured			
—	RCR460727A	500	70mm X 25mm	14-19
—	RCR199283A	500	75mm X 25mm	14-16
RCR111515A	RCR111553A	250	75mm X 50mm	8-14
—	RCR111474A	250	80mm X 40mm	11-19
RCR111353A	RCR111370A	250	80mm X 50mm	8-14
—	RCR460736A	300	90mm X 40mm	8-14
—	RCR199231A	250	100mm X 40mm	8-14
—	RCRM10502040A	200	100mm X 50mm	10-14
—	RCR460743A	300	120mm X 30mm	13-19
—	RCR460749A	100	150mm X 50mm	8-14



# RECTANGULAR & OVAL INSERT GLIDES

## RTG Series

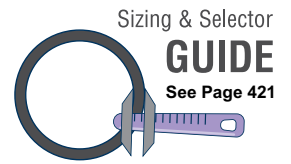
### Rectangular Load Bearing Glides

Specifications:

- Material: ABS
- Color: Black

Features:

- Suitable for light- and heavy-duty applications
- Step lead provides for easy installation
- Press fit assures a secure hold in tubing



Item No.	Tube Size In	Tube Gauge	Wall Thickness In	Bulk Pack Qty
RTG1100A	0.500 x 1.000	16	0.065	6000
RTG1110A	0.500 x 1.000	18	0.049	3800
RTG1120A	0.500 x 1.250	16	0.065	5000
RTG1150A	0.500 x 1.500	16	0.065	4000
RTG1160A	0.500 x 1.500	18	0.049	4000
RTG1190A	0.750 x 1.250	18	0.049	2800
RTG1210A	0.750 x 1.500	14	0.083	2500
RTG1220A	0.750 x 1.500	16	0.065	2200
RTG1230A	0.750 x 1.500	18	0.049	2200
RTG1240A	0.750 x 2.000	16	0.065	2000
RTG1250A	1.000 x 1.500	11	0.120	2000
RTG1270A	1.000 x 1.500	14	0.083	2000
RTG1280A	1.000 x 1.500	16	0.065	1800
RTG1290A	1.000 x 1.500	18	0.049	2100
RTG1310A	1.000 x 2.000	11	0.120	1400
RTG1340A	1.000 x 2.000	14	0.083	1400
RTG1350A	1.000 x 2.000	16	0.065	1200
RTG1359B	1.000 X 2.000	17	0.058	1400
RTG1370A	1.000 x 2.000	18	0.049	1400
RTG1390A	1.000 x 3.000	11	0.120	1300
RTG1400A	1.000 x 3.000	14	0.083	1300

Item No.	Tube Size In	Tube Gauge	Wall Thickness In	Bulk Pack Qty
RTG1410A	1.000 x 3.000	16	0.065	1300
RTG1420A	1.250 x 2.000	12	0.109	1200
RTG1430A	1.250 x 2.000	14	0.083	800
RTG1440A	1.250 x 2.000	16	0.065	800
RTG1450A	1.500 x 2.000	11	0.120	900
RTG1460A	1.500 x 2.000	14	0.083	900
RTG1470A	1.500 x 2.000	15	0.072	900
RTG1480A	1.500 x 2.000	16	0.065	900
RTG1490A	1.500 x 2.500	11	0.120	500
RTG1500A	1.500 x 2.500	12	0.109	600
RTG1510A	1.500 x 2.500	16	0.065	900
RTG1521A	1.500 x 3.000	11	0.120	900
RTG1530A	1.500 x 3.000	14	0.083	1000
RTG1540A	1.500 x 3.000	16	0.065	500
RTG1550A	1.500 x 4.000	16	0.065	500
RTG1560A	2.000 x 3.000	11	0.120	700
RTG1570A	2.000 x 3.000	14	0.083	700
RTG1580B	2.000 x 4.000	11	0.120	350
RTG1590B	2.000 x 4.000	13	0.095	350
RTG1600B	2.000 x 4.000	16	0.065	350

## RCP Series

### Rectangular Ribbed Tube Inserts Chrome Finish

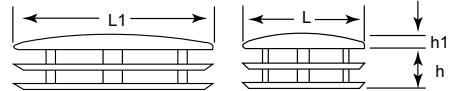


Specifications:

- Material: Low-Density Polyethylene
- Color: Black with Highly-Polished Metal-Finish Shell

Features:

- Polished metallic finish provides enhanced aesthetic appearance
- Horizontal ribbing allows for built-in flexibility to fit multiple tube gauges



Item No.	L1 x L		h		h1		Gauge Wall		Bulk Pack Qty
	In	mm	In	mm	In	mm	In	mm	
RCP460966A	0.394 X 0.787	10 x 20	0.394	10.00	0.059	1.50	.040-.080	1.0-2.0	1000
RCP460967A	0.591 X 0.787	15 x 20	0.394	10.00	0.079	2.00	.040-.080	1.0-2.0	1000
RCP460968A	0.591 X 1.181	15 x 30	0.394	10.00	0.079	2.00	.040-.080	1.0-2.0	1000
RCP460969A	0.787 X 1.575	20 x 40	0.433	11.00	0.079	2.00	.040-.080	1.0-2.0	500

## OVP Series

### Oval Ribbed Tube Inserts Chrome Finish

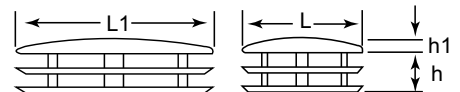


Specifications:

- Material: Low-Density Polyethylene
- Color: Black with Highly-Polished Metal-Finish Shell

Features:

- Polished metallic finish provides enhanced aesthetic appearance
- Horizontal ribbing allows for built-in flexibility to fit multiple tube gauges

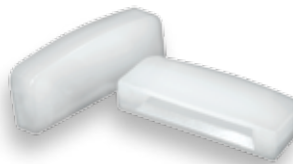


Item No.	L1 x L		h		h1		Fits		Bulk Pack Qty
	In	mm	In	mm	In	mm	Gauge (In)	mm	
OVP200100A	0.787 x 0.394	20 x 10	0.394	10.00	0.079	2.00	14-19 (.040-.080)	1.0-2.0	3000
OVP463024A	1.181 x 0.591	30 x 15	0.394	10.00	0.098	2.50	14-19 (.040-.080)	1.0-2.0	1000
OVP465360A	1.575 x 0.787	40 x 20	0.394	10.00	0.118	3.00	14-19 (.040-.080)	1.0-2.0	500

# SQUARE TUBE CONNECTORS



## BSC Series Rectangular Bar Stock Caps



**Specifications:**

- Material: Nylon or Polyethylene
- Color: Black or Natural

**Features:**

- Rectangular caps for bar steel are manufactured with a rounded or flat base, and serve as an excellent means for capping the ends of bar steel

Item No.	Bar Dimensions		Base Depth		Base Style	Material	Color	Bulk Pack Qty
	In	mm	In	mm				
BSC100A	0.045 x 0.575	1.14 x 14.61	0.287	7.28	Round	Nylon	Natural	7000
BSC200A	0.125 x 0.750	3.18 x 19.05	0.406	10.31	Flat	Polyethylene	Black	8000
BSC300A	0.250 x 1.000	6.35 x 25.40	0.625	15.87	Flat	Polyethylene	Black	2500

## AIC Series Angle Iron Caps



**Specifications:**


- Material: Low-Density Polyethylene
- Color: Black

**Features:**


- Angle iron caps are an affordable answer to the problem of protecting floors from the sharp edges of angle iron furniture
- Angle iron caps are also used as caps on metal bed frames and shelves and will not rust while also eliminating the cost of welding steel closures





Item No.	Leg Length		Leg Gauge		Bulk Pack Qty
	In	mm	In	mm	
AIC1000A	1.000	25.40	0.125	3.18	2200
AIC1125A	1.250	31.74	0.125	3.18	1400
AIC1128A	1.500	38.10	0.125	3.18	1000
AIC2000A	1.290	32.78	0.125	3.18	600




# ON A ROLL!









Browse our large selection of casters at

[www.essentracomponents.com](http://www.essentracomponents.com)





# PLASTIC BASED LEVELERS

## AFM & AFMP Series

### Swivel/Tilting Adjustable Machinery Feet



AFMP Series

AFM Series

Item No.					
Plain Base	Bolt-Down Base	Thread	Stud Length In	Base Dia In	Bulk Pack Qty
AFM1100A	—	5/16-18	2.5	1.57	40
AFM1200A	—	5/16-18	2.5	1.97	40
—	AFM1300B	5/16-18	2.5	2.36	40
AFM1400A	—	5/16-18	3.5	1.57	40
AFM1500A	—	5/16-18	3.5	1.97	40
—	AFM1600B	5/16-18	3.5	2.36	40
AFM2050A	—	3/8-16	3	1.97	40
—	AFM2100B	3/8-16	3	2.36	40
AFM2150A	—	3/8-16	3	3.15	40
AFM2200A	—	3/8-16	4	1.97	40
—	AFM2250B	3/8-16	4	2.36	40
AFM2300A	—	3/8-16	4	3.15	40
AFM3100A	—	1/2-13	3	1.97	24
—	AFM3150B	1/2-13	3	2.36	24
AFM3200A	AFM3200B	1/2-13	3	3.15	24
AFM3300A	—	1/2-13	4	1.97	24
AFM3400A	AFM3400B	1/2-13	4	3.15	24
—	AFM3450B	1/2-13	4	3.94	24
AFM3500A	—	1/2-13	5	2.36	24

## AFMM Series Threaded Leveler Metric

### Plain Base

Item No.	Base Dia. (mm)	Stud Length (mm)	Thread	Bulk Pack Qty
468564	40	25	M8	40
468565	40	40	M8	40
468566	40	80	M8	40
468567	50	40	M8	40
468568	50	60	M8	40
468569	50	80	M8	40
468570	50	45	M10	40
468571	50	70	M10	40
468572	50	90	M10	40
468573	60	45	M10	40
468574	60	70	M10	40
468575	60	125	M10	40
468576	60	66	M12	24
468577	60	80	M12	24
468578	60	100	M12	24
468579	60	125	M12	24
468580	60	150	M12	24
468581	80	66	M12	24
468582	80	100	M12	24
468583	80	125	M12	24
468584	80	150	M12	24
468585	80	66	M16	20
468586	80	100	M16	20
468587	80	150	M16	20
468588	100	66	M16	20
468589	100	100	M16	20
468590	100	125	M16	20
468591	100	150	M16	20
468592	100	200	M16	20
468593	120	150	M16	20
468594	120	200	M16	20
468595	120	125	M20	12
468596	120	150	M20	12
468597	120	200	M20	12
468598	120	200	M24	12
468599	120	250	M24	12

### Specifications:

- Material: Black Nylon Base with Zinc Plated Steel rod

### Features:

- Ideal for mounting machines or conveyers
- High Load bearing of 2000lbs (900kg) per foot
- Tilting & swiveling design (20° Max)

### AFMP Series - Optional Non-Slip Pad

Item No.			
Plain Base	Bolt-Down Base	Base Dia In	Bulk Pack Qty
AFMP040A	—	1.57	40
AFMP050A	—	1.97	40
AFMP060A	AFMP060B	2.36	24
AFMP080A	AFMP080B	3.15	20
AFMP100A	AFMP100B	3.94	20
AFMP120A	AFMP120B	4.72	12

Item No.					
Plain Base	Bolt-Down Base	Thread	Stud Length In	Base Dia In	Bulk Pack Qty
AFM3600A	AFM3600B	1/2-13	5	3.15	24
—	AFM3700B	1/2-13	5	3.94	24
AFM4100A	—	5/8-11	3	1.97	20
—	AFM4150B	5/8-11	3	2.36	20
AFM4200A	—	5/8-11	3	3.15	20
AFM4250A	—	5/8-11	4	1.97	20
AFM4300A	AFM4300B	5/8-11	4	3.15	20
—	AFM4400B	5/8-11	4	3.94	20
AFM4450A	—	5/8-11	6	3.15	20
AFM4500A	AFM4500B	5/8-11	6	3.94	20
AFM4600A	—	5/8-11	6	4.72	20
AFM4650A	—	5/8-11	8	3.15	20
AFM4700A	—	5/8-11	8	3.94	20
AFM4800A	AFM4800B	5/8-11	8	4.72	20
AFM5400A	—	3/4-10	6	3.15	20
AFM5450A	—	3/4-10	6	3.94	20
AFM5500A	AFM5500B	3/4-10	6	4.72	12
AFM5600A	—	3/4-10	8	3.15	12
AFM5650A	—	3/4-10	8	3.94	12
AFM5700A	AFM5700B	3/4-10	8	4.72	12



Plain Base



Bolt Down Base

### Specifications:

- Material: Black Nylon Base with Zinc Plated Steel rod

### Features:

- Ideal for mounting machines or conveyers
- High Load bearing of 2000lbs (900kg) per foot
- Tilting & swiveling design (20° Max)

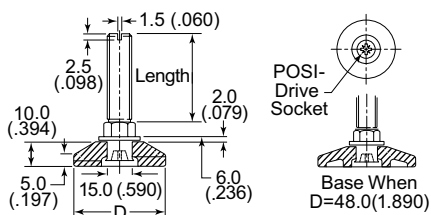
### Bolt Down Base

Item No.	Base Dia. (mm)	Stud Length (mm)	Thread	Bulk Pack Qty
468600	60	80	M8	40
468601	60	70	M10	40
468602	60	125	M10	40
468603	80	100	M12	24
468604	80	150	M12	24
468605	80	100	M16	20
468606	80	150	M16	20
468607	100	125	M12	20
468608	100	100	M16	20
468609	100	200	M16	20
468610	120	150	M16	20
468611	120	200	M16	20
468612	120	150	M20	12
468613	120	200	M24	12

# PLASTIC BASED LEVELERS



## AFP Series Articulating Adjustable Feet



**Specifications:**

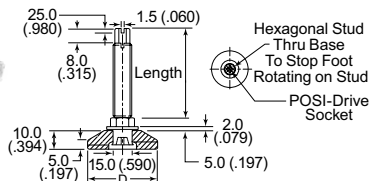
- Material: Polypropylene (PP), Low-Carbon Steel Stud with Zinc-Plated Finish
- Color: Black

**Features:**

- Allows adjustment under load with base remaining stationary

Item No.	D (Base)		Thread Size	Stud Length		Bulk Pack Qty
	In	mm		In	mm	
AFP25100A	0.984	25.00	1/4-20	0.750	19.05	100
AFP25110A	0.984	25.00	5/16-18	1.000	25.40	100
AFP25120A	0.984	25.00	5/16-18	1.500	38.10	100
AFP25130A	0.984	25.00	5/16-18	2.000	50.80	100
AFP25140A	0.984	25.00	5/16-18	2.750	69.85	100
AFP25150A	0.984	25.00	5/16-18	4.000	101.60	100
AFP30100A	1.181	30.00	5/16-18	1.000	25.40	100
AFP30110A	1.181	30.00	5/16-18	1.500	38.10	100
AFP30120A	1.181	30.00	5/16-18	2.000	50.80	100
AFP30130A	1.181	30.00	5/16-18	2.750	69.85	100
AFP30140A	1.181	30.00	5/16-18	3.000	76.20	100
AFP30150A	1.181	30.00	5/16-18	4.000	101.60	100
AFP30160A	1.181	30.00	3/8-16	1.000	25.40	100
AFP30180A	1.181	30.00	3/8-16	1.500	38.10	100
AFP30200A	1.181	30.00	3/8-16	2.000	50.80	100
AFP30210A	1.181	30.00	3/8-16	2.750	69.85	100
AFP30220A	1.181	30.00	3/8-16	4.000	101.60	100
AFP38100A	1.500	38.00	5/16-18	1.000	25.40	100
AFP38120A	1.500	38.00	5/16-18	1.500	38.10	100
AFP38130A	1.500	38.00	5/16-18	2.000	50.80	100
AFP38140A	1.500	38.00	5/16-18	2.750	69.85	100
AFP38150A	1.500	38.00	5/16-18	3.000	76.20	100
AFP38160A	1.500	38.00	5/16-18	4.000	101.60	100
AFP38170A	1.500	38.00	3/8-16	1.000	25.40	100
AFP38180A	1.500	38.00	3/8-16	1.500	38.10	100
AFP38200A	1.500	38.00	3/8-16	2.000	50.80	100
AFP38210A	1.500	38.00	3/8-16	2.750	69.85	100
AFP38220A	1.500	38.00	3/8-16	3.000	76.20	100
AFP38230A	1.500	38.00	3/8-16	4.000	101.60	100
AFP38240A	1.500	38.00	1/2-13	1.000	25.40	100
AFP38250A	1.500	38.00	1/2-13	1.500	38.10	100
AFP38260A	1.500	38.00	1/2-13	2.000	50.80	100
AFP38280A	1.500	38.00	1/2-13	2.750	69.85	100
AFP38290A	1.500	38.00	1/2-13	4.000	101.60	100
AFP48100A	1.890	48.00	5/16-18	1.000	25.40	100
AFP48110A	1.890	48.00	5/16-18	1.500	38.10	100
AFP48130A	1.890	48.00	5/16-18	2.000	50.80	100
AFP48140A	1.890	48.00	5/16-18	2.750	69.85	100
AFP48150A	1.890	48.00	5/16-18	4.000	101.60	100
AFP48170A	1.890	48.00	3/8-16	1.000	25.40	100
AFP48180A	1.890	48.00	3/8-16	1.500	38.10	100
AFP48200A	1.890	48.00	3/8-16	2.000	50.80	100
AFP48210A	1.890	48.00	3/8-16	2.375	60.33	100
AFP48220A	1.890	48.00	3/8-16	2.750	69.85	100
AFP48240A	1.890	48.00	3/8-16	4.000	101.60	100
AFP48250A	1.890	48.00	1/2-13	1.000	25.40	100
AFP48260A	1.890	48.00	1/2-13	1.500	38.10	100
AFP48270A	1.890	48.00	1/2-13	2.000	50.80	100
AFP48280A	1.890	48.00	1/2-13	2.750	69.85	100
AFP48290A	1.890	48.00	1/2-13	4.000	101.60	100

## AFS Series Rigid Adjustable Feet

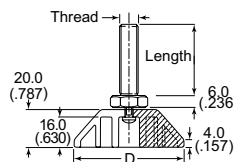


**Specifications:**

- Material: Polypropylene (PP), Low-Carbon Steel Stud with Zinc-Plated Finish
- Color: Black

Item No.	D (Base)		Thread Size	Stud Length		Bulk Pack Qty
	In	mm		In	mm	
AFS48410A	1.890	48.00	5/16-18	1.000	25.40	100
AFS48420A	1.890	48.00	5/16-18	1.500	38.10	100
AFS48430A	1.890	48.00	5/16-18	2.000	50.80	100
AFS48440A	1.890	48.00	5/16-18	2.750	69.85	100
AFS48450A	1.890	48.00	5/16-18	4.000	101.60	100
AFS48460A	1.890	48.00	3/8-16	1.000	25.40	100
AFS48470A	1.890	48.00	3/8-16	1.500	38.10	100
AFS48480A	1.890	48.00	3/8-16	2.000	50.80	100
AFS48490A	1.890	48.00	3/8-16	2.750	69.85	100
AFS48500A	1.890	48.00	3/8-16	4.000	101.60	100
AFS48510A	1.890	48.00	1/2-13	1.000	25.40	100
AFS48520A	1.890	48.00	1/2-13	1.500	38.10	100
AFS48530A	1.890	48.00	1/2-13	2.000	50.80	100
AFS48540A	1.890	48.00	1/2-13	2.750	69.85	100
AFS48550A	1.890	48.00	1/2-13	4.000	101.60	100

## AFT Series Swivel Tilting Adjustable Feet



**Specifications:**

- Material: Polypropylene (PP), Zinc-Plated Steel Tilt Ball and Stud
- Color: Black

**Features:**

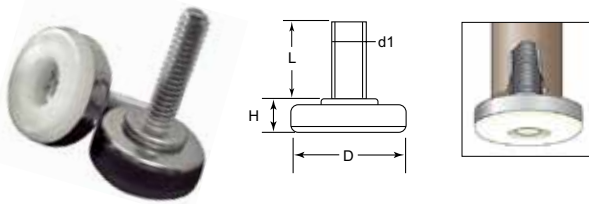
- Max 25° tilt

Item No.	D (Base)		Thread Size	Stud Length		Bulk Pack Qty
	In	mm		In	mm	
AFT25100A	0.984	25.00	1/4-20	1.000	25.40	100
AFT25110A	0.984	25.00	5/16-18	0.500	12.70	100
AFT25120A	0.984	25.00	5/16-18	1.000	25.40	100
AFT25130A	0.984	25.00	3/8-16	0.500	12.70	100
AFT25140A	0.984	25.00	3/8-16	1.500	38.10	100
AFT25150A	0.984	25.00	3/8-16	2.000	50.80	100
AFT32160A	1.260	32.00	1/4-20	1.000	25.40	100
AFT32170A	1.260	32.00	5/16-18	1.000	25.40	100
AFT32180A	1.260	32.00	5/16-18	1.500	38.10	100
AFT32190A	1.260	32.00	3/8-16	1.000	25.40	100
AFT32200A	1.260	32.00	3/8-16	2.000	50.80	100
AFT32210A	1.260	32.00	3/8-16	3.000	76.20	100
AFT38220A	1.496	38.00	5/16-18	1.000	25.40	100
AFT38230A	1.496	38.00	5/16-18	1.500	38.10	100
AFT38240A	1.496	38.00	3/8-16	1.000	25.40	100
AFT38250A	1.496	38.00	3/8-16	2.000	50.80	100
AFT38260A	1.496	38.00	3/8-16	3.000	76.20	100
AFT47270A	1.850	47.00	5/16-18	1.000	25.40	100
AFT47280A	1.850	47.00	5/16-18	2.000	50.80	100
AFT47290A	1.850	47.00	3/8-16	1.000	25.40	100
AFT47300A	1.850	47.00	3/8-16	2.000	50.80	100
AFT47310A	1.850	47.00	3/8-16	3.000	76.20	100



# PLASTIC BASED LEVELERS

## AFB Series Nylon Based Adjustable Feet



**Specifications:**

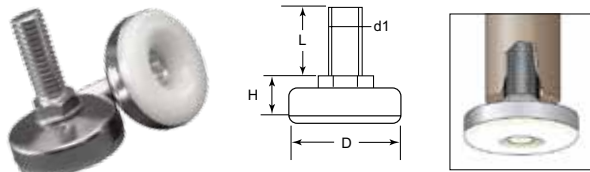
- Material: Nylon Base, Low-Carbon Steel Stud With Zinc-Plated Finish and Nickel-Plated Shell
- Color: Natural Nylon Base with Nickel-Plated Shell

**Features:**

- Economic leveler ideal for uneven surfaces
- Nylon base provides a smooth non-abrasive surface
- Excellent for leveling cabinets, office furniture and light-duty machines

Item No.	D (Base)		H (Height)		L	d1 (Thread)	Bulk Pack Qty
	In	mm	In	mm			
AFB1010A	1.000	25.40	0.438	11.11	1.000	25.40	1/4"-20 400
AFB1015A	1.000	25.40	0.438	11.11	2.000	50.80	1/4"-20 360
AFB1020A	1.375	34.93	0.594	15.08	1.000	25.40	3/8"-16 200
AFB1025A	1.375	34.93	0.594	15.08	2.000	50.80	3/8"-16 180

## AFE Series Nylon Based With Hex Adjustable Feet



**Specifications:**

- Material: Nylon Base, Low-Carbon Steel Stud with Zinc-Plated Finish and Nickel-Plated Shell
- Color: Natural Nylon Base with Nickel-Plated Shell

**Features:**

- Integral hexagonal nut allows adjustment under a positive load
- Nylon base provides a smooth non-abrasive surface
- Excellent for leveling cabinets, office furniture and light-duty machines

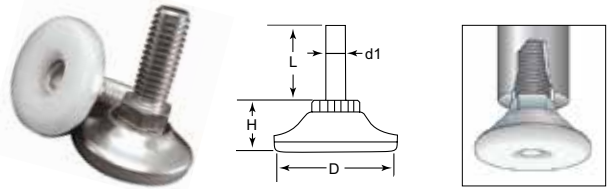
Item No.	D (Base)		H (Height)		L	d1 (Thread)	Bulk Pack Qty
	In	mm	In	mm			
AFE1010A	1.375	34.93	0.700	17.78	1.000	25.40	3/8"-16 200
AFE1015A	1.375	34.93	0.700	17.78	2.000	50.80	3/8"-16 180

## AFR Series Nylon Based Adjustable Feet



Item No.	D (Base)		H (Height)		L	d1 (Thread)	Bulk Pack Qty
	In	mm	In	mm			
AFR1010A	1.125	28.58	0.438	11.11	1.000	25.40	1/4"-20 400
AFR1015A	1.125	28.58	0.438	11.11	2.000	50.80	1/4"-20 360
AFR1020A	1.125	28.58	0.438	11.11	1.000	25.40	5/16"-18 300
AFR1025A	1.125	28.58	0.438	11.11	2.000	50.80	5/16"-18 280
AFR1030A	1.300	33.02	0.500	12.70	1.000	25.40	3/8"-16 240
AFR1035A	1.300	33.02	0.500	12.70	2.000	50.80	3/8"-16 220
AFR1040A	1.750	44.45	0.531	13.49	1.000	25.40	3/8"-16 200
AFR1045A	1.750	44.45	0.531	13.49	2.000	50.80	3/8"-16 180

## AFD Series Nylon Based With Hex Adjustable Feet



**Specifications:**

- Material: Nylon Base, Low-Carbon Steel Stud with Zinc-Plated Finish and Nickel-Plated Shell
- Color: Natural Nylon Base with Nickel-Plated Shell

**Features:**

- Integral hexagonal nut allows adjustment under load
- Nylon base provides a smooth non-abrasive surface
- Excellent for leveling cabinets, office furniture and light-duty machines
- Attractive nickel finish

Item No.	D (Base)		H (Height)		L	d1 (Thread)	Bulk Pack Qty
	In	mm	In	mm			
AFD1010A	1.300	33.02	0.625	15.88	1.000	25.40	3/8"-16 300
AFD1020A	1.750	44.45	0.688	17.46	1.000	25.40	3/8"-16 300
AFD1025A	1.750	44.45	0.688	17.46	2.000	25.40	3/8"-16 280

## MBC Series Glide Base Caps



**Specifications:**

- Material: Nylon or LDPE
- Color: Natural

**Features:**

- Low profile
- Effectively encapsulates standard metal base glides

Item No.	Base Cap O.D. In	Material	Bulk Pack Qty
MBC1200A	0.875	Nylon	5000
MBC1210A	1.000	LDPE	4000
MBC1220A	1.062	Nylon	4000
MBC1230A	1.200	LDPE	3000
MBC1240A	1.218	Nylon	3000
MBC1250A	1.250	LDPE	2500
MBC1260A	1.250	Nylon	2500

**Specifications:**

- Material: Nylon Base, Low-Carbon Steel Stud With Zinc-Plated Finish and Nickel-Plated Shell
- Color: Natural Nylon Base with Nickel-Plated Shell

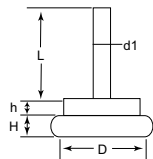
**Features:**

- Economic leveler ideal for uneven surfaces
- Nylon base provides a smooth non-abrasive surface
- Excellent for leveling cabinets, office furniture and light-duty machines

# PLASTIC BASED LEVELERS



## AFH Series Steel Based Adjustable Feet



**Specifications:**

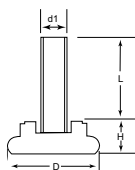
- Material: Low-Carbon Steel Stud with Zinc-Plated Finish and Nickel-Plated Shell

**Features:**

- Economic leveler ideal for uneven surfaces
- Steel shell base provides a smooth non-skid surface
- Excellent for leveling cabinets, office furniture and light-duty machines
- Polymer cushion provided shock absorption
- Attractive chrome finish

Item No.	D (Base)		H (Height)		h (Height)		L		d1 (Thread)	Bulk Pack Qty
	In	mm	In	mm	In	mm	In	mm		
AFH1010A	0.748	19.00	0.236	6.00	0.157	4.00	0.650	16.50	1/4"-20	400
AFH1015A	0.748	19.00	0.236	6.00	0.157	4.00	1.000	25.40	1/4"-20	360
AFH1020A	0.866	22.00	0.236	6.00	0.157	4.00	0.650	16.50	1/4"-20	320
AFH1025A	0.866	22.00	0.236	6.00	0.157	4.00	1.500	38.10	1/4"-20	300
AFH1030A	0.945	24.00	0.236	6.00	0.157	4.00	0.650	16.50	1/4"-20	240
AFH1035A	0.945	24.00	0.236	6.00	0.157	4.00	1.500	38.10	1/4"-20	220
AFH1040A	1.063	27.00	0.236	6.00	0.157	4.00	1.000	25.40	1/4"-20	192
AFH1045A	1.063	27.00	0.236	6.00	0.157	4.00	2.000	50.80	1/4"-20	172

## AFJ Series Black Nylon Based Stepped Adjustable Feet



**Specifications:**

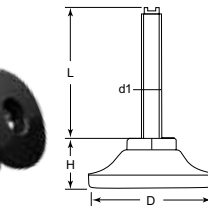
- Material: Nylon Base, Low-Carbon Steel Stud with Zinc-Plated Finish
- Color: Black

**Features:**

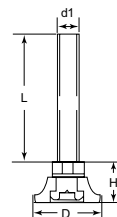
- Economic leveler for uneven surfaces
- Excellent for leveling cabinets, office furniture and light-duty machines
- Polymer cushion provides shock absorption

Item No.	D (Base)		H (Height)		L		d1 (Thread)	Bulk Pack Qty
	In	mm	In	mm	In	mm		
AFJ1010A	1.000	25.40	0.375	9.53	0.875	22.23	1/4"-20	600
AFJ1020A	1.000	25.40	0.375	9.53	1.000	25.40	1/4"-20	560
AFJ1030A	1.000	25.40	0.375	9.53	1.500	38.10	1/4"-20	520
AFJ1040A	1.000	25.40	0.375	9.53	1.750	44.45	1/4"-20	480
AFJ1050A	1.000	25.40	0.375	9.53	0.875	22.23	5/16"-18	600
AFJ1060A	1.000	25.40	0.375	9.53	1.000	25.40	5/16"-18	560
AFJ1070A	1.000	25.40	0.375	9.53	1.500	38.10	5/16"-18	520
AFJ1080A	1.000	25.40	0.375	9.53	1.750	44.45	5/16"-18	480

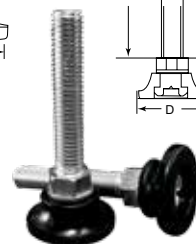
## AFW Series Black Nylon Based With Metal Hex Adjustable Feet



Style 1



Style 2



**Specifications:**

- Material: Nylon Base, Low-Carbon Steel Stud with Zinc-Plated Finish
- Color: Black

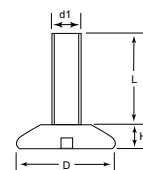
**Features:**

- Integral hexagonal nut allows adjustment under a load
- Nylon base provides a smooth non-abrasive surface
- Excellent for leveling cabinets, office furniture and light-duty machines
- Style 1 – comes with screw slot



Item No.	D (Base)		H (Height)		L		d1 (Thread)	Style	Bulk Pack Qty
	In	mm	In	mm	In	mm			
AFW1010A	1.688	42.86	0.690	17.52	1.000	25.40	3/8"-16	1	280
AFW1020A	1.688	42.86	0.690	17.52	1.500	38.10	3/8"-16	1	260
AFW1030A	1.688	42.86	0.690	17.52	2.000	50.80	3/8"-16	1	240
AFW1040A	1.688	42.86	0.690	17.52	3.000	76.20	3/8"-16	1	220
AFW2010A	1.000	25.40	0.665	16.89	1.000	25.40	1/4"-20	2	600
AFW2020A	1.000	25.40	0.665	16.89	1.500	38.10	1/4"-20	2	560
AFW2030A	1.000	25.40	0.690	17.52	1.625	41.28	1/4"-20	2	520
AFW2035A	1.000	25.40	0.665	16.89	2.000	50.80	1/4"-20	2	500
AFW2040A	1.000	25.40	0.675	17.15	1.000	25.40	5/16"-18	2	600
AFW2050A	1.000	25.40	0.665	16.89	1.500	38.10	5/16"-18	2	560
AFW2060A	1.000	25.40	0.665	16.89	1.625	41.28	5/16"-18	2	520
AFW2065A	1.000	25.40	0.675	17.15	2.000	50.80	5/16"-18	2	500

## AFA Series Plastic Based Adjustable Feet



**Specifications:**

- Material: LDPE or Polyurethane Base, Low-Carbon Steel Stud with Zinc-Plated Finish
- Color: Black

**Features:**

- Available in low-cost Polyethylene or the more durable Polyurethane
- Excellent for leveling cabinets, office furniture and light-duty machines

Item No.	Material	D (Base)		H (Height)		L		d1 (Thread)	Bulk Pack Qty
		In	mm	In	mm	In	mm		
AFA1010A	LDPE	1.625	41.28	0.438	11.11	1.313	33.34	3/8"-16	200
AFA1010B	PUR	1.625	41.28	0.438	11.11	1.313	33.34	3/8"-16	200
AFA1020B	LDPE	1.625	41.28	0.438	11.11	2.500	63.50	3/8"-16	160
AFA1020A	PUR	1.625	41.28	0.438	11.11	2.500	63.50	3/8"-16	160



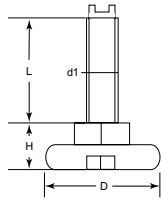
# PLASTIC BASED LEVELERS

## AFG Series

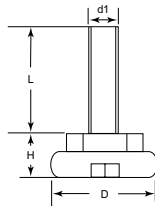
### Black Nylon Based Adjustable Feet



Style 1



Style 2



#### Specifications:

- Material: Nylon Base, Low-Carbon Steel Stud with Zinc-Plated Finish
- Color: Black

#### Features:

- Integral hexagonal nut allows adjustment under load
- Nylon base provides a smooth non-abrasive surface
- Excellent for leveling cabinets, office furniture and light-duty machines
- Style 1 – comes with screw slot



Item No.	D (Base)		H (Height)		L		d1 (Thread)	Style	Bulk Pack Qty
	In	mm	In	mm	In	mm			
AFG1010A	1.000	25.40	0.375	9.53	0.750	19.05	5/16"-18	1	400
AFG1020A	1.000	25.40	0.375	9.53	1.000	25.40	5/16"-18	1	360
AFG1030A	1.000	25.40	0.375	9.53	1.500	38.10	5/16"-18	1	320
AFG1040A	1.000	25.40	0.375	9.53	2.000	50.80	5/16"-18	1	280
AFG2010A	1.000	25.40	0.375	9.53	0.750	19.05	5/16"-18	2	600
AFG2020A	1.000	25.40	0.375	9.53	1.000	25.40	5/16"-18	2	400
AFG2030A	1.000	25.40	0.375	9.53	1.500	38.10	5/16"-18	2	300
AFG2040A	1.375	34.93	0.375	9.53	1.000	25.40	1/4"-20	2	600
AFG2045A	1.375	34.93	0.375	9.53	1.500	38.10	1/4"-20	2	580
AFG2050A	1.375	34.93	0.375	9.53	0.750	19.05	5/16"-18	2	500
AFG2060A	1.375	34.93	0.375	9.53	1.000	25.40	5/16"-18	2	400
AFG2070A	1.375	34.93	0.375	9.53	1.500	38.10	5/16"-18	2	300
AFG2075A	1.375	34.93	0.375	9.53	2.000	50.80	5/16"-18	2	280

## SAI Series

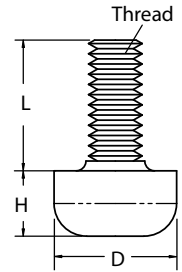
### Square Ribbed Inserts with Adjustable Feet



Item No.	Tube Size		Fits		Reference Dimensions				Axial Load lbs	Bulk Pack Qty
	In	mm	Gauge	mm	A	B	C	D		
SAI100A	0.750	20.00	14-18	1.5-2.0	0.158	0.866	0.197	0.945	220	100
SAI200A	0.875	22.00	14-18	1.5-2.0	0.158	0.866	0.197	0.945	220	200
SAI300A	1.000	25.00	14-18	1.5-2.0	0.197	0.985	0.197	0.906	330	300
SAI400A	1.181	30.00	14-18	1.5-2.0	0.197	0.985	0.197	0.787	660	100
SAI500A	1.375	35.00	14-18	1.5-2.0	0.197	1.358	0.197	0.787	660	100
SAI600A	1.500	40.00	14-18	1.5-2.0	0.197	1.358	0.197	0.787	660	100
SAI700A	1.750	45.00	14-18	1.5-2.0	0.197	1.358	0.197	1.102	660	100
SAI800A	2.000	50.00	14-18	1.5-2.0	0.197	1.358	0.197	1.142	660	100

## TB Series

### Threaded Insert Bumper



#### Specifications:

- Material: IIR; 40-50 Shore A

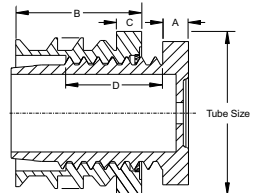
#### Features:

- Can be used as a leveling device or bumper for small equipment
- Non-corrosive stud

Item No.	Thread	H		L		D		Bulk Pack Qty
		In	mm	In	mm	In	mm	
TB-1	#6-32	0.200	5.1	0.400	10.2	0.380	9.5	100
TB-2	#8-32	0.200	5.1	0.400	10.2	0.380	9.5	100
TB-3	M3	0.200	5.1	0.400	10.2	0.380	9.5	100
TB-4	M4	0.200	5.1	0.400	10.2	0.380	9.5	100

## RAI Series

### Round Ribbed Inserts with Adjustable Feet



#### Specifications:

- Material: Nylon
- Color: Black

#### Features:

- Rugged, durable, heavy duty
- Resists lateral stresses
- Threaded insert and height adjuster in one piece

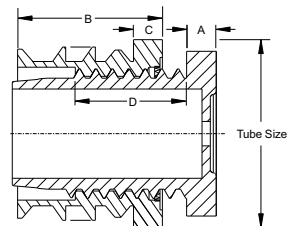
Item No.	Tube Size		Fits Gauge	Fits mm	Reference Dimensions				Axial Load lbs	Bulk Pack Qty
	In	mm			A	B	C	D		
RAI100A	1.250	32	14-18	1.5-2.0	0.197	0.985	0.197	0.787	660	800
RAI200A	1.375	35	14-18	1.5-2.0	0.197	1.358	0.197	0.787	660	100
RAI300A	1.500	40	14-18	1.5-2.0	0.197	1.358	0.197	0.787	660	100
RAI400A	1.750	45	14-18	1.5-2.0	0.197	1.358	0.197	1.102	660	100
RAI500A	2.000	50	14-18	1.5-2.0	0.197	1.358	0.197	1.181	660	100
RAI600A	2.375	60	14-18	1.5-2.0	0.394	1.595	0.236	1.457	660	100
RAI700A	3.125	80	14-18	1.5-2.0	0.394	1.595	0.236	1.457	660	100

#### Specifications:

- Material: Nylon
- Color: Black

#### Features:

- Rugged, durable, heavy duty
- Resists lateral stresses
- Threaded insert and height adjuster in one piece

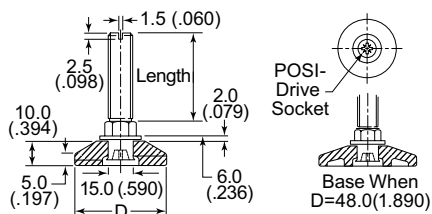




# PLASTIC BASED LEVELERS



## AFPM Series Articulating Adjustable Feet Metric



**Specifications:**

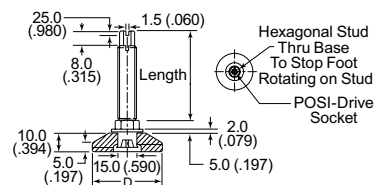
- Material: Polypropylene (PP), Low-Carbon Steel Stud with Zinc-Plated Finish
- Color: Black

**Features:**

Allows adjustment under load with base remaining stationary

Item No.	D Base mm	Thread Size	Stud Length mm	Bulk Pack Qty
466212	25	M6	20	500
466167	25	M8	25	500
466168	25	M8	40	350
466169	25	M8	55	250
466170	25	M8	70	200
466171	25	M8	100	150
466172	30	M6	25	400
466173	30	M6	40	300
466174	30	M6	55	200
466175	30	M6	70	150
466176	30	M6	100	100
466177	30	M10	25	300
466178	30	M10	40	200
466179	30	M10	55	100
466180	30	M10	70	100
466181	30	M10	100	50
466182	38	M8	25	400
466183	38	M8	40	300
466184	38	M8	55	200
466185	38	M8	70	150
466186	38	M8	100	100
466187	38	M10	25	300
466188	38	M10	40	200
466189	38	M10	55	100
466190	38	M10	70	100
466191	38	M10	100	50
466192	38	M12	25	200
466193	38	M12	40	150
466194	38	M12	55	150
466195	38	M12	70	50
466196	38	M12	100	100
466197	48	M8	25	200
466198	48	M8	40	150
466199	48	M8	55	150
466200	48	M8	70	100
466201	48	M8	100	100
466202	48	M10	25	150
466203	48	M10	40	100
466204	48	M10	55	100
466205	48	M10	70	50
466206	48	M10	100	100
466207	48	M12	25	100
466208	48	M12	40	100
466209	48	M12	55	100
466211	48	M12	100	50

## AFSM Series Rigid Adjustable Feet Metric



**Specifications:**

- Material: Polypropylene (PP), Low-Carbon Steel Stud with Zinc-Plated Finish
- Color: Black

Item No.	D Base mm	Thread Size	Stud Length mm	Bulk Pack Qty
466121	25	M6	20	500
466122	25	M8	25	500
466123	25	M8	40	350
466124	25	M8	55	250
466125	25	M8	70	200
466126	25	M8	100	150
466127	30	M8	25	400
466128	30	M8	40	300
466129	30	M8	55	200
466130	30	M8	70	150
466131	30	M8	100	100
466132	30	M10	25	300
466133	30	M10	40	200
466134	30	M10	55	100
466135	30	M10	70	100
466136	30	M10	100	50
466137	38	M8	25	400
466138	38	M8	40	300
466139	38	M8	55	200
466140	38	M8	70	150
466141	38	M8	100	100
466142	38	M10	25	300
466143	38	M10	40	200
466144	38	M10	55	100
466145	38	M10	70	100
466146	38	M10	100	50
466147	38	M12	25	200
466148	38	M12	40	150
466149	38	M12	55	150
466150	38	M12	70	100
466151	38	M12	100	50
466152	48	M8	25	200
466153	48	M8	40	200
466154	48	M8	55	150
466155	48	M8	70	150
466156	48	M8	100	100
466157	48	M10	25	200
466158	48	M10	40	150
466159	48	M10	55	100
466160	48	M10	70	100
466161	48	M10	100	50
466162	48	M12	25	150
466163	48	M12	40	100
466164	48	M12	55	100
466165	48	M12	70	50
466166	48	M12	100	50

**PLASTIC BASED LEVELERS****AFTM Series  
Swivel Tilting Adjustable Feet  
Metric**

## Specifications:

- Material: Polypropylene (PP), Low-Carbon Steel Stud with Zinc-Plated Finish
- Color: Black

Item No.	Thread	Diameter (mm)		Bulk Pack Qty
		Base Dia.	Stud Length	
462183	M6	25.0	25.0	750
462184	M6	32.5	25.0	500
110728	M8	25.0	12.0	100
110732	M8	25.0	25.0	100
110729	M8	32.0	12.0	100
110733	M8	32.0	25.0	100
110730	M8	38.0	12.0	100
110734	M8	38.0	25.0	100
110731	M8	47.5	12.0	100
110735	M8	47.5	25.0	100
110736	M10	25.0	15.0	100

Item No.	Thread	Diameter (mm)		Bulk Pack Qty
		Base Dia.	Stud Length	
110740	M10	25.0	38.0	100
110744	M10	25.0	50.0	100
110737	M10	32.0	15.0	100
110741	M10	32.0	38.0	100
110745	M10	32.0	50.0	100
110738	M10	38.0	15.0	100
110742	M10	38.0	38.0	100
110746	M10	38.0	50.0	100
110739	M10	47.5	15.0	100
110743	M10	47.5	38.0	100
110747	M10	47.5	50.0	100

**AFBM Series  
Nylon Based Adjustable Feet  
Metric**

## Specifications:

- Material: Nylon Base, Low-Carbon Steel Stud With Zinc-Plated Finish and Nickel-Plated Shell
- Color: Natural Nylon Base with Nickel-Plated Shell

## Features:

- Economic leveler ideal for uneven surfaces
- Nylon base provides a smooth non-abrasive surface
- Excellent for leveling cabinets, office furniture and light-duty machines

Item No.	Thread	Diameter (mm)		Bulk Pack Qty
		Base Dia.	Stud Length	
RWA25M0820	M8	25	20	500
RWA35M0820	M8	35	20	250
RWA45M0820	M8	45	20	250
RWB50M0820*	M8	50	20	250
RWA45M1045	M10	45	45	500

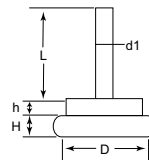
**TUBE INSERT GLIDES**

View them all on pages  
388 - 402 or buy online at  
[www.essentracomponents.com](http://www.essentracomponents.com)

# ADJUSTABLE FEET & TACK GLIDES



## AFHM Series Steel Based Adjustable Feet Metric



**Specifications:**

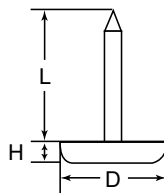
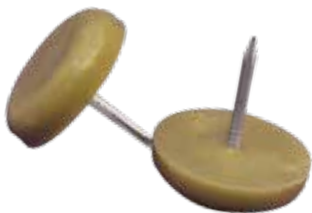
- Material: Low-Carbon Steel Stud with Zinc-Plated Finish and Nickel-Plated Shell

**Features:**

- Economic leveler ideal for uneven surfaces
- Steel shell base provides a smooth non-skid surface
- Excellent for leveling cabinets, office furniture and light-duty machines
- Polymer cushion provided shock absorption
- Attractive chrome finish

Item No.	D Base mm	Thread Size	Stud Length mm	Bulk Pack Qty
465347	20	M6	10	1000
465346	25	M8	20	500
465345	25	M10	20	250
465352	30	M8	20	250
465350	30	M10	20	250
465355	35	M8	20	250
465356	40	M8	25	250
465359	40	M10	25	250
465358	40	M10	40	250
465354	40	M10	60	250

## TKG Series Tack Glides



**Specifications:**

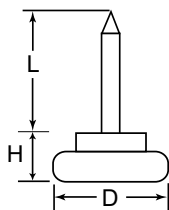
- Material: High-Density Polyethylene with Nickel Plated Nail
- Color: Available in both Natural and Light Brown

**Features:**

- Available in two styles
- Ideal for wooden furniture

Natural Item No.	Brown Item No.	D (Base)		H (Height)		L		Bulk Pack Qty
		In	mm	In	mm	In	mm	
TKG1010A	TKG1010B	0.625	15.88	0.250	6.35	0.719	18.26	6000
TKG1020A	TKG1020B	0.750	19.05	0.250	6.35	0.719	18.26	4500
TKG1030A	TKG1030B	0.875	22.23	0.250	6.35	0.719	18.26	4000
TKG1040A	TKG1040B	1.000	25.40	0.250	6.35	0.719	18.26	3000

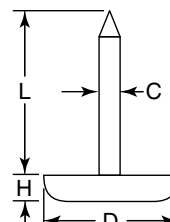
## TKM Series Steel Based Glide



Ideal for use on Smooth Surfaces

Item No.	D	H	L	Bulk Pack Qty
497411	0.750	0.393	0.709	200
497412	0.870	0.393	0.709	200
497413	0.940	0.393	0.709	200
497414	1.060	0.393	0.709	200
497415	1.180	0.393	0.709	200

## TKT Series PTFE Based Glide



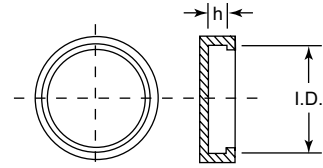
Ideal when easy movement is essential

Item No.	D	H	L	C	Bulk Pack Qty
499499	0.750	0.393	0.709	0.102	200
499500	0.870	0.393	0.709	0.102	200
499501	0.980	0.393	0.709	0.102	200
499502	1.180	0.393	0.709	0.102	200
499503	1.460	0.393	0.709	0.102	200



# RIVET FEET

## FF Series Fast Foot



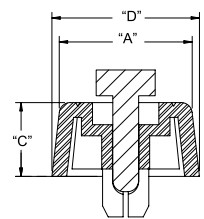
Specifications:

- Material: TPR over Acetal
- Color: Black
- Flame Class: UL94 HB

Item No.	Hole Dia.		Panel Thickness		D		H		Bulk Pack Qty
	In	mm	In	mm	In	mm	In	mm	
FF-001B	0.199	5.1	0.039 - 0.091	1.0 - 2.3	0.950	24.0	0.551	14.0	100
FF-003-P3X5.5B	0.124	3.2	0.031 - 0.071	0.8 - 1.8	0.560	14.2	0.217	5.5	100
FF-004B	0.199	5.1	0.039 - 0.091	1.0 - 2.3	0.790	20.0	0.394	10.0	100
FF-005-P4X5B	0.163	4.2	0.039 - 0.091	0.8 - 1.8	0.830	21.0	0.165	4.2	100
FF-005-P4X6B	0.163	4.2	0.071 - 0.111	1.8 - 2.8	0.830	21.0	0.165	4.2	100
FF-005-P4X7B	0.163	4.2	0.114 - 0.146	2.9 - 3.7	0.830	21.0	0.165	4.2	100
FF-005-P4X8B	0.163	4.2	0.150 - 0.189	3.8 - 4.8	0.830	21.0	0.165	4.2	100
FF-006-P4X6B	0.163	4.2	0.024 - 0.039	0.6 - 1.0	0.590	15.0	0.236	6.0	100
FF-006-P4X7B	0.163	4.2	0.039 - 0.079	1.0 - 2.0	0.590	15.0	0.236	6.0	100
FF-006-P4X8B	0.163	4.2	0.079 - 0.118	2.0 - 3.1	0.590	15.0	0.236	6.0	100
FF-006-P5X6.5B	0.203	5.2	0.031 - 0.047	0.8 - 1.2	0.590	15.0	0.236	6.0	100
FF-006-P5X7.5B	0.203	5.2	0.051 - 0.091	1.3 - 2.3	0.590	15.0	0.236	6.0	100
FF-008-P4X6B	0.163	4.2	0.031 - 0.071	0.8 - 1.8	0.830	21.0	0.236	6.0	100
FF-008-P4X7B	0.163	4.2	0.075 - 0.110	1.9 - 2.8	0.830	21.0	0.236	6.0	100
FF-008-P4X8B	0.163	4.2	0.114 - 0.157	2.9 - 4.0	0.830	21.0	0.236	6.0	100
FF-009-P4X6B	0.163	4.2	0.000 - 0.031	0.0 - 0.8	0.830	21.0	0.315	8.0	100
FF-009-P4X7B	0.163	4.2	0.031 - 0.079	0.8 - 2.0	0.830	21.0	0.315	8.0	100
FF-009-P4X8B	0.163	4.2	0.083 - 0.118	2.1 - 3.0	0.830	21.0	0.315	8.0	100
FF-010-P4X7B	0.163	4.2	0.039 - 0.079	1.0 - 2.0	0.590	15.0	0.354	9.0	100
FF-010-P4X8B	0.163	4.2	0.079 - 0.118	2.0 - 3.1	0.590	15.0	0.354	9.0	100
FF-13-P3.5X4.5B	0.144	3.7	0.020 - 0.047	0.5 - 1.2	0.430	10.8	0.157	4.0	100
FF-13-P3.5X5.5B	0.144	3.7	0.047 - 0.079	1.2 - 2.0	0.430	10.8	0.157	4.0	100
FF-13-P3.5X6.0B	0.144	3.7	0.059 - 0.087	1.5 - 2.2	0.430	10.8	0.157	4.0	100
FF-13-P3.5X7.0B	0.144	3.7	0.098 - 0.126	2.5 - 3.2	0.430	10.8	0.157	4.0	100

## SFF Soft Fast Foot

- Rivet is pushed in, locking foot in place
- Prevents surface damage with anti-skid and scratch resistant properties
- Made of abrasion resistant rubber to help cushion and provide vibration control
- High shear strength
- Material: Foot: UL94 HB TPE, 86 Shore A
- Pin: Polypropylene
- Color: Black



Item No.	Hole Ø	Panel Thickness	"A" Ref.	"C" Ref.	"D" Ref.	Bulk Pack Qty
SFF-018	.305 (7.75)	.031 - .059 (0.8 - 1.5)	.71 (18)	.39 (10)	.79 (20)	100
SFF-021	.305 (7.75)	.197 - .315 (5.0 - 8.0)	.79 (20)	.24 (6)	.83 (21)	100
SFF-023	.305 (7.75)	.031 - .059 (0.8 - 1.5)	.91 (23)	.20 (5)	.98 (25)	100
SFF-028	.305 (7.75)	.031 - .059 (0.8 - 1.5)	.71 (18)	.59 (15)	.79 (20)	100

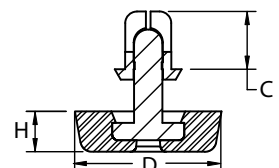
## FSR Series Snap Rivet Mount Foot



Specifications:

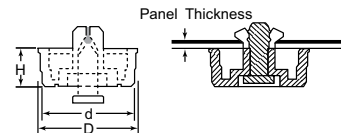
- Material: TPE over Nylon 6
- Color: Black
- Flame Class: UL94V-2

Item No.	Hole Diameter		Panel Thickness		D		H		C		Bulk Pack Qty
	In	mm	In	mm	In	mm	In	mm	In	mm	
FSR-1	0.144	3.7	0.047 - 0.083	1.2 - 2.1	0.394	10.0	0.189	4.8	0.138	3.5	1000
FSR-2	0.144	3.7	0.083 - 0.118	2.1 - 3.0	0.394	10.0	0.189	4.8	0.177	4.5	1000
FSR-3	0.163	4.1	0.098 - 0.138	2.5 - 3.5	0.394	10.0	0.189	4.8	0.197	5.0	1000
FSR-4	0.144	3.7	0.047 - 0.083	1.2 - 2.1	0.500	12.7	0.138	3.5	0.138	3.5	1000
FSR-5	0.144	3.7	0.083 - 0.118	2.1 - 3.0	0.500	12.7	0.138	3.5	0.177	4.5	1000
FSR-6	0.163	4.1	0.098 - 0.138	2.5 - 3.5	0.500	12.7	0.138	3.5	0.197	5.0	1000





**RF Series  
 Rivet Feet**



**Specifications:**

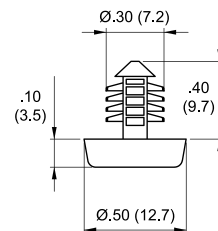
- Rivet Material: Nylon 6
- Foot Material: TPE
- Color: Black

**Features:**

- Feet are supplied with incorporated push rivets to quickly and easily install into pre-drilled holes
- Can be removed by pushing the plunger back thru from the opposite side

Item No.	Panel Thickness		Hole Dia		d		D		H		Bulk Pack Qty
	In	mm	In	mm	In	mm	In	mm	In	mm	
RF100B	0.031 - 0.071	0.8 - 1.8	0.122 - 0.126	3.1 - 3.2	0.531	13.5	0.559	14.2	0.217	5.5	500
RF105B	0.071 - 0.110	1.8 - 2.8	0.122 - 0.126	3.1 - 3.2	0.531	13.5	0.559	14.2	0.217	5.5	500
RF110B	0.013 - 0.071	0.8 - 1.8	0.161 - 0.165	4.1 - 4.2	0.790	20.0	0.827	21.0	0.165	4.2	500
RF115B	0.071 - 0.110	1.8 - 2.8	0.161 - 0.165	4.1 - 4.2	0.790	20.0	0.827	21.0	0.165	4.2	500
RF120B	0.114 - 0.146	2.9 - 3.7	0.161 - 0.165	4.1 - 4.2	0.790	20.0	0.827	21.0	0.165	4.2	500
RF125B	0.150 - 0.189	3.8 - 4.8	0.161 - 0.165	4.1 - 4.2	0.790	20.0	0.827	21.0	0.165	4.2	500
RF130B	Max 0.020	(max 0.8)	0.161 - 0.165	4.1 - 4.2	0.551	14.0	0.591	15.0	0.236	6.0	500
RF135B	0.024 - 0.039	0.6 - 1.0	0.161 - 0.165	4.1 - 4.2	0.551	14.0	0.591	15.0	0.236	6.0	500
RF140B	0.039 - 0.079	1.0 - 2.0	0.161 - 0.165	4.1 - 4.2	0.551	14.0	0.591	15.0	0.236	6.0	500
RF145B	0.079 - 0.118	2.0 - 3.1	0.161 - 0.165	4.1 - 4.2	0.551	14.0	0.591	15.0	0.236	6.0	500
RF150B	0.031 - 0.047	0.8 - 1.2	0.200 - 0.205	5.1 - 5.2	0.551	14.0	0.591	15.0	0.236	6.0	500
RF155B	0.051 - 0.091	1.3 - 2.3	0.200 - 0.205	5.1 - 5.2	0.551	14.0	0.591	15.0	0.236	6.0	500
RF160B	0.031 - 0.071	0.8 - 1.8	0.161 - 0.165	4.1 - 4.2	0.790	20.0	0.827	21.0	0.236	6.0	500
RF165B	0.075 - 0.110	1.9 - 2.8	0.161 - 0.165	4.1 - 4.2	0.790	20.0	0.827	21.0	0.236	6.0	500
RF170B	0.114 - 0.157	2.9 - 4.0	0.161 - 0.165	4.1 - 4.2	0.790	20.0	0.827	21.0	0.236	6.0	500
RF175B	Max 0.020	(max 0.8)	0.161 - 0.165	4.1 - 4.2	0.790	20.0	0.827	21.0	0.315	8.0	500
RF180B	0.039 - 0.079	1.0 - 2.0	0.161 - 0.165	4.1 - 4.2	0.790	20.0	0.827	21.0	0.315	8.0	500
RF185B	0.083 - 0.118	2.1 - 3.0	0.161 - 0.165	4.1 - 4.2	0.790	20.0	0.827	21.0	0.315	8.0	500
RF190B	0.024 - 0.039	0.6 - 1.0	0.161 - 0.165	4.1 - 4.2	0.551	14.0	0.591	15.0	0.354	9.0	500
RF195B	0.039 - 0.079	1.0 - 2.0	0.161 - 0.165	4.1 - 4.2	0.551	14.0	0.591	15.0	0.354	9.0	500
RF200B	0.079 - 0.118	2.0 - 3.1	0.161 - 0.165	4.1 - 4.2	0.551	14.0	0.591	15.0	0.354	9.0	500
RF205B	0.031 - 0.047	0.8 - 1.2	0.200 - 0.205	5.1 - 5.2	0.551	14.0	0.591	15.0	0.354	9.0	500
RF210B	0.059 - 0.087	1.5 - 2.2	0.200 - 0.205	5.1 - 5.2	0.551	14.0	0.591	15.0	0.354	9.0	500
RF215B	0.020 - 0.047	0.5 - 1.2	0.142 - 0.146	3.6 - 3.7	0.394	10.0	0.425	10.8	0.157	4.0	500
RF220B	0.047 - 0.079	1.2 - 2.0	0.142 - 0.146	3.6 - 3.7	0.394	10.0	0.425	10.8	0.157	4.0	500
RF225B	0.059 - 0.087	1.5 - 2.2	0.142 - 0.146	3.6 - 3.7	0.394	10.0	0.425	10.8	0.157	4.0	500
RF230B	0.098 - 0.126	2.5 - 3.2	0.142 - 0.146	3.6 - 3.7	0.394	10.0	0.425	10.8	0.157	4.0	500
RF235B	0.138 - 0.177	3.5 - 4.5	0.142 - 0.146	3.6 - 3.7	0.394	10.0	0.425	10.8	0.157	4.0	500

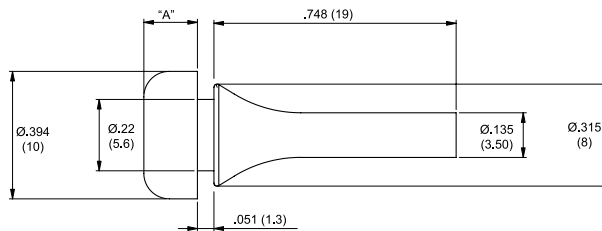
**FBR  
 Foot, Fir-Tree Mount**



- Rigid nylon fir-tree mount provides exceptional retention strength
- Rubber foot provides skid resistance and vibration control
- Material: Rivet: UL94 V-2 Nylon 6/6
- Foot: TPE
- Color: Black

Item No.	Hole Ø	Min. Panel Thickness	Bulk Pack Qty
FBR-1	.268 (6.8)	.394 (10)	1000

**BPM  
 Pull Mount Bumper**



- Pulled from the inside of chassis
- High temperature silicone helps to cushion and prevent skidding
- Material: Silicone Rubber, 65 Shore A

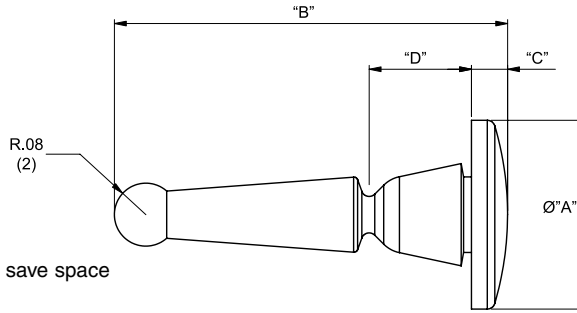
Item No.	Hole Ø	Panel Thickness	"A"	Color	Bulk Pack Qty
BPM-1	.24 - .25 (6 - 6.35)	.059 (1.5)	.118 (3.0)	Gray	1000
BPM-2	.24 - .25 (6 - 6.35)	.059 (1.5)	.165 (4.2)	Black	1000
BPM-3	.24 - .25 (6 - 6.35)	.059 (1.5)	.196 (5.0)	Black	1000





# STEM BUMPERS

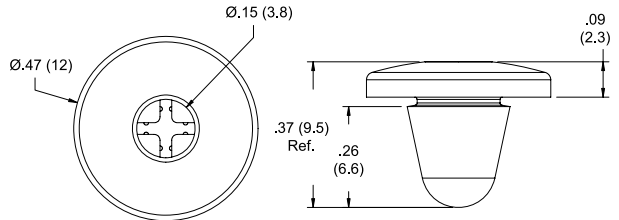
## BAB Break-Away Bumper



- Designed to be pulled from the inside of the chassis
- Mounting tab designed to break away after assembly to save space
- Silicone is good for high temperature applications
- Color: Black

Item No.	Hole Ø	Panel Thickness	A Ø	B	C	D	Material	Bulk Pack Qty
BAB-1	.197-.212 (5.0-5.4)	.024 - .031 (0.6 - 0.8)	.47 (12)	.98 (25)	.09 (2.3)	.26 (6.5)	Silicone Rubber, 40 Shore A, RMS-316	1000
BAB-2	.197-.212 (5.0-5.4)	.024 - .031 (0.6 - 0.8)	.47 (12)	.98 (25)	.09 (2.3)	.26 (6.5)	Silicone Rubber, 50 Shore A, RMS-364	1000
BAB-3	.185-.197 (4.7-5)	.020 (0.5)	.39 (10)	.79 (20)	.08 (2.0)	.16 (4.3)	Silicone Rubber, 50 Shore A, RMS-364	1000

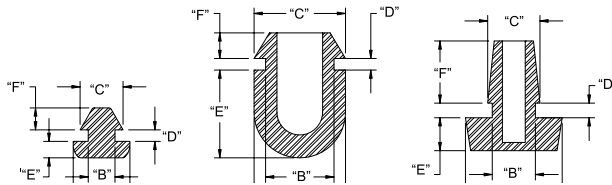
## BIB Blind Install Bumper



- Installed from the outside of the chassis
- Cross that is molded into the head allows quick installation with a #1 phillips head screwdriver or 1/8 (3.2) Ø or smaller blunt end rod
- May be used as an alternate to the BAB series seen above
- Material: Silicone Rubber, 45 Shore A
- Color: Black

Item No.	Hole Ø	Panel Thickness	Bulk Pack Qty
BIB-1	.197 - .212 (5 - 5.4)	.024 - .031 (1.6 - 0.8)	1000

## POF Push On Feet



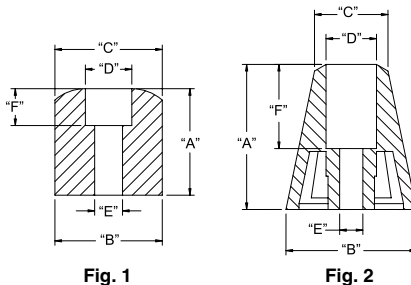
- Easily mounted by pushing into chassis
- Material: UL94 HB TPE
- Color: Black

Item No.	Hole Ø	Panel Thickness	A Ø	BØ	CØ	D	E	F Ref.	Fig.	Bulk Pack Qty
POF-40022	.146 - .150 (3.7-3.8)	.126 (3.2)	.31 (7.9)	.126 (3.2)	.17 (4.4)	.13 (3.3)	.06 (1.6)	.13 (3.3)	1	100
POF-40048	.177 - .181 (4.5-4.6)	.059 (1.5)	.31 (7.9)	.146 (3.7)	.24 (6.1)	.06 (1.6)	.09 (2.3)	.12 (3)	1	100
POF-40059	.374 - .378 (9.5-9.6)	.059 (1.5)	.50 (12.7)	.374 (9.5)	.50 (12.7)	.06 (1.6)	.48 (12.2)	.14 (3.6)	2	100
POF-50185	.236 - .240 (6-6.1)	.075 (1.9)	.53 (13.4)	.236 (6)	.29 (7.3)	.08 (2)	.18 (4.6)	.34 (8.6)	3	100
POF-12664	.276 - .280 (7-7.1)	.047 (1.2)	.62 (15.7)	.276 (7)	.34 (8.6)	.05 (1.3)	.20 (5.1)	.16 (4.1)	3	100

## SOF Screw Mount Feet



- Securely mounted with a screw
- Provides excellent skid resistance
- Material: Neoprene Rubber
- Color: Black

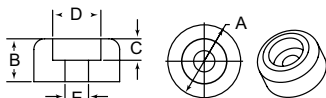


Item No.	A	Ø B	Ø C Ref.	Ø D	Ø E	F	Fig.	Bulk Pack Qty
SOF-15129	.28 (7.1)	.63 (15.9)	.54 (13.8)	.31 (8.0)	.13 (3.2)	.16 (4.0)	1	100
SOF-15140	.37 (9.5)	.69 (17.5)	—	.31 (8.0)	.16 (4.0)	.20 (5.2)	2	100
SOF-15125	.45 (11.5)	.75 (19.1)	.71 (18)	.40 (10.2)	.20 (5.0)	.25 (6.35)	1	100
SOF-15111	.60 (15.25)	.75 (19.1)	.50 (12.7)	.31 (8.0)	.16 (4.0)	.19 (4.8)	2	100
SOF-15127	.72 (18.35)	.73 (18.5)	—	.31 (8.0)	.19 (4.8)	.25 (6.35)	1	100
SOF-15126	.98 (25.0)	.89 (22.5)	.50 (12.7)	.34 (8.7)	.16 (4.0)	.57 (14.5)	2	100



**BUMPERS**

**BRR Series  
Screw on Bumper Feet**



**Specifications:**

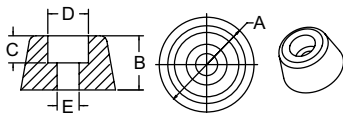
- Material: Nylon and LDPE
- Color: Black or Natural

**Features:**

- Recessed bumpers are ideally suited for use as feet on radios, TV sets, house wares, small appliances and many other products
- They are fastened by means of a screw, bolt or rivet
- Can also be used as spacers or door stops
- Available in round, coved and tapered configurations

Item No.	Material	Color	A		B		C		D		E		Bulk Pack Qty
			In	mm	In	mm	In	mm	In	mm	In	mm	
BRR015A	Nylon	Natural	0.500	12.70	0.375	9.53	0.063	1.59	0.391	9.92	0.190	4.83	12000
BRR015B	Nylon	Black	0.500	12.70	0.375	9.53	0.063	1.59	0.391	9.92	0.190	4.83	12000
BRR015C	LDPE	Black	0.500	12.70	0.375	9.53	0.063	1.59	0.391	9.92	0.190	4.83	12000
BRR025A	Nylon	Natural	0.625	15.88	0.500	12.70	0.250	6.35	0.343	8.71	0.187	4.75	5000
BRR025B	Nylon	Black	0.625	15.88	0.500	12.70	0.250	6.35	0.343	8.71	0.187	4.75	5000
BRR025C	LDPE	Black	0.625	15.88	0.500	12.70	0.250	6.35	0.343	8.71	0.187	4.75	5000
BRR030A	Nylon	Natural	0.750	19.05	0.312	7.92	0.130	3.30	0.437	11.10	0.280	7.11	5000
BRR030B	Nylon	Black	0.750	19.05	0.312	7.92	0.130	3.30	0.437	11.10	0.280	7.11	5000
BRR030C	LDPE	Black	0.750	19.05	0.312	7.92	0.130	3.30	0.437	11.10	0.280	7.11	5000
BRR055A	Nylon	Natural	1.000	25.40	0.500	12.70	0.250	6.35	0.563	14.29	0.266	6.75	3200
BRR055B	Nylon	Black	1.000	25.40	0.500	12.70	0.250	6.35	0.563	14.29	0.266	6.75	3200
BRR055C	LDPE	Black	1.000	25.40	0.500	12.70	0.250	6.35	0.563	14.29	0.266	6.75	3200

**BTR Series  
Heavy Duty Screw on Bumper Feet**



**Specifications:**

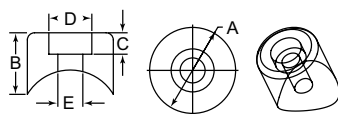
- Material: Nylon and LDPE
- Color: Black or Natural

**Features:**

- They are fastened by means of a screw, bolt or rivet

Item No.	Material	Color	A		B		C		D		E		Bulk Pack Qty
			In	mm	In	mm	In	mm	In	mm	In	mm	
BTR020A	Nylon	Natural	0.750	19.05	0.625	15.88	0.437	11.10	0.375	9.53	0.156	3.96	5000
BTR020B	Nylon	Black	0.750	19.05	0.625	15.88	0.437	11.10	0.375	9.53	0.156	3.96	5000
BTR020C	LDPE	Natural	0.750	19.05	0.625	15.88	0.437	11.10	0.375	9.53	0.156	3.96	5000
BTR020D	LDPE	Black	0.750	19.05	0.625	15.88	0.437	11.10	0.375	9.53	0.156	3.96	5000
BTR040A	Nylon	Natural	0.750	19.05	0.750	19.05	0.470	11.94	0.440	11.18	0.196	4.98	5000
BTR040B	Nylon	Black	0.750	19.05	0.750	19.05	0.470	11.94	0.440	11.18	0.196	4.98	5000
BTR040C	LDPE	Natural	0.750	19.05	0.750	19.05	0.470	11.94	0.440	11.18	0.196	4.98	5000
BTR040D	LDPE	Black	0.750	19.05	0.750	19.05	0.470	11.94	0.440	11.18	0.196	4.98	5000

**BCR Series  
Coved Screw On Bumper Feet**



**Specifications:**

- Material: Nylon or LDPE
- Color: Black or Natural

**Features:**

- Coved surface fits matching round tubing
- Can be used as a glide, bumper or spacer

Item No.	Material	Color	Tube Dia		B In	C In	D In	E In	Bulk Pack Qty
			In	A In					
BCR010A	Nylon	Natural	0.750	0.805	1.000	0.250	0.370	0.215	1500
BCR020A	Nylon	Natural	1.000	0.835	0.675	0.280	0.645	0.270	5000
BCR040A	Nylon	Natural	1.000	0.990	0.850	0.260	0.515	0.240	2800
BCR040B	Nylon	Black	1.000	0.990	0.850	0.260	0.515	0.240	2800
BCR050A	Nylon	Natural	1.000	1.000	0.812	0.312	0.500	0.218	3000

Item No.	Material	Color	Tube Dia		B In	C In	D In	E In	Bulk Pack Qty
			In	A In					
BCR050B	Nylon	Black	1.000	1.000	0.812	0.312	0.500	0.218	3000
BCR050C	LDPE	Black	1.000	1.000	0.812	0.312	0.500	0.218	3000
BCR060A	Nylon	Natural	1.000	1.000	0.828	0.265	0.484	0.305	3000
BCR060B	Nylon	Black	1.000	1.000	0.828	0.265	0.484	0.305	3000
BCR060C	LDPE	Black	1.000	1.000	0.828	0.265	0.484	0.305	3000



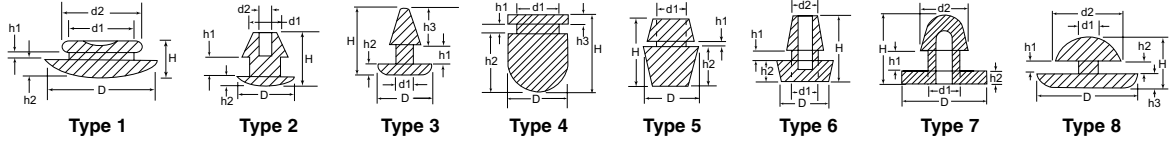
# STEM BUMPERS

## GRF Series PVC Bumper Feet



- Specifications:
- Material: Flexible PVC
  - Color: Black

- Features:
- Designed for use on metal or plastic housings and cases
  - Simply push into punched or drilled holes



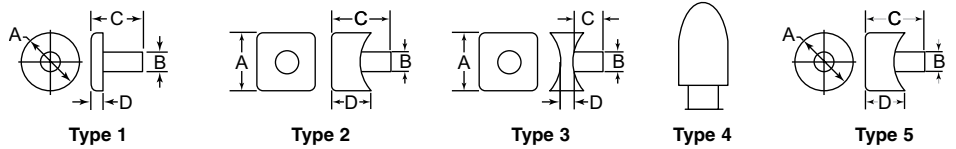
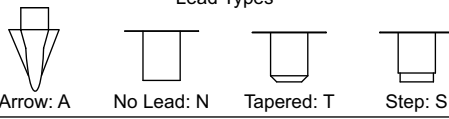
Item No.	Type	D		d1		d2		H		h1		h2		h3		Bulk Pack Qty
		In	mm	In	mm	In	mm	In	mm	In	mm	In	mm	In	mm	
GRF16010A	1	0.606	15.39	0.386	9.80	0.500	12.70	0.276	7.01	0.063	1.60	0.106	2.69	—	—	10000
GRF17409A	1	0.748	19.00	0.472	12.00	0.516	13.11	0.256	6.50	0.031	0.79	0.126	3.20	—	—	10000
GRF17412A	1	0.748	19.00	0.504	12.80	0.626	15.90	0.295	7.49	0.063	1.60	0.126	3.20	—	—	7000
GRF24006A	2	0.406	10.31	0.177	4.50	0.087	2.21	0.299	7.59	0.063	1.60	0.079	2.01	—	—	5000
GRF33106A	3	0.311	7.90	0.126	3.20	—	—	0.327	8.31	0.126	3.20	0.063	1.60	0.138	3.51	10000
GRF33109A	3	0.311	7.90	0.146	3.71	—	—	0.276	7.01	0.063	1.60	0.094	2.39	0.118	3.00	10000
GRF45050A	4	0.492	12.50	0.374	9.50	—	—	0.669	16.99	0.063	1.60	0.472	12.00	0.138	3.51	10000
GRF54131A	5	0.429	10.90	0.272	6.91	—	—	0.504	12.80	0.028	0.71	0.319	8.10	—	—	10000
GRF64718A	6	0.472	12.00	0.236	6.00	0.228	5.79	0.598	15.19	0.083	2.11	0.181	4.60	—	—	10000
GRF65919A	2	0.622	15.80	0.268	6.81	0.157	3.99	0.382	9.70	0.059	1.50	0.197	5.00	—	—	10000
GRF79815A	7	0.996	25.30	0.492	12.50	0.602	15.29	0.787	19.99	0.197	5.00	0.157	3.99	—	—	2000
GRF86713A	8	0.689	17.50	0.437	11.10	0.524	13.31	0.394	10.01	0.102	2.59	0.157	3.99	0.157	3.99	10000

## BST & BCS Series Standard & Coved Stem Bumpers



- Specifications:
- Material: Nylon
  - Color: Natural
- Features:
- Used to protect surfaces from contact
  - Ideal for sheet metal, wood and tubing

### Lead Types

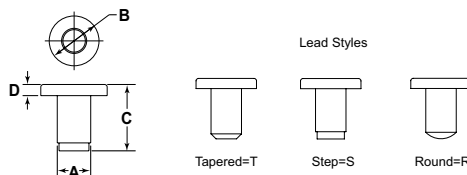


Item No.	Style	A (Base Size)		B		C		D		Bulk Pack Qty
		In	mm	In	mm	In	mm	In	mm	
BST015A	1A	0.437	11.1	0.125	3.18	0.546	13.87	0.125	3.18	29000
BST027A	1A	0.500	12.70	0.200	5.08	0.607	15.42	0.063	1.6	20000
BST005A	1N	0.362	9.19	0.200	5.08	0.250	6.35	0.150	3.81	16000
BST025A	1N	0.500	12.70	0.190	4.83	0.325	8.26	0.150	3.81	8000
BST010A	1S	0.375	9.53	0.187	4.75	0.600	15.24	0.060	7.62	15000
BST020A	1S	0.500	12.70	0.225	4.75	0.781	19.84	0.296	7.52	8000
BST030A	1S	0.500	12.70	0.250	6.35	0.640	16.26	0.188	4.78	5000
BST040A	1S	0.500	12.70	0.335	8.51	0.858	21.79	0.435	11.05	6500
BST072A	1S	0.750	19.05	0.255	6.48	0.400	10.16	0.187	4.75	7000
BST100A	1S	1.125	28.58	0.320	8.13	0.495	12.57	0.165	4.19	5000
BST140A	1S	1.250	31.75	0.375	9.53	0.840	21.37	0.380	9.65	2300
BST075C	1T	0.750	19.05	0.250	6.35	0.687	17.45	0.187	4.75	10000
BST095A	1T	1.000	25.40	0.250	6.35	0.656	16.66	0.156	3.96	7000
BST115A	2S	.750 x 1.00	19.05 x 25.40	0.250	6.35	0.570	14.48	0.120	3.05	5500
BST110A	3S	.750 x .750	19.05 x 19.05	0.268	6.81	0.490	12.45	0.090	2.28	5000
BST135A	3S	0.620 X 0.620	15.75 X 15.75	0.250	6.35	0.450	11.43	0.128	3.05	5500
BST012A	4N	0.375	9.53	0.260	6.6	0.880	22.35	0.635	16.13	10000
BCS030C	5S	0.750	19.05	0.255	6.48	0.360	9.14	0.187	4.75	8000
BST070A	5S	0.980	24.89	0.250	6.35	.750	19.05	0.500	12.7	35000
BST150A	5T	0.750	19.05	0.268	6.81	0.710	18.03	0.187	4.75	8000



## STEM BUMPERS & WELD CAPS

### BFS, BFSA & SCP Series Flat Headed Stem Bumpers



**Specifications:**

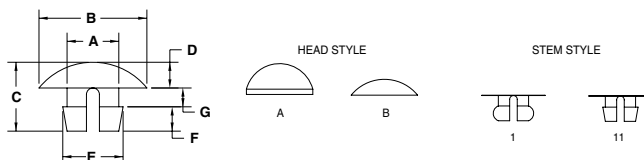
- Material: Nylon, LDPE and HDPE
- Color: Black or Natural

**Features:**

- Flat head stem bumpers are designed to rest against a flat or tangent surface
- The step-type or tapered lead on the stem makes insertion easy, and the press fit on the shank holds the bumper securely
- Applications include use as glides, bumpers, closures, slides and stops on many products

Item No.	Material	Color	A		B		C		D		Lead Style	Bulk Pack Qty
			In	mm	In	mm	In	mm	In	mm		
BFS010A	Nylon	Natural	0.125	3.18	0.406	10.31	0.297	7.54	0.063	1.60	T	15000
BFS015A	Nylon	Natural	0.250	6.35	0.500	12.70	0.594	15.09	0.250	6.35	S	11000
BFS020A	Nylon	Natural	0.156	3.96	0.307	7.80	0.173	4.39	0.042	1.07	R	10000
BFS035A	Nylon	Natural	0.187	4.70	0.500	12.70	0.313	7.95	0.125	3.18	T	9000
BFS060A	Nylon	Natural	0.250	6.35	0.500	12.70	0.438	11.13	0.156	3.96	R	15000
BFS080A	Nylon	Natural	0.260	6.60	0.750	19.05	0.437	11.10	0.094	2.39	S	9000
BFS100A	Nylon	Natural	0.320	8.13	1.000	25.40	0.415	10.54	0.180	4.57	S	7000
BFS110A	Nylon	Natural	0.380	9.65	1.460	37.08	0.415	10.54	0.188	4.78	S	3000
BFSA010A	LDPE	Black	0.125	3.18	0.406	10.31	0.297	7.54	0.063	1.60	T	15000
BFSA015A	LDPE	Black	0.250	6.35	0.500	12.70	0.594	15.09	0.250	6.35	S	11000
BFSA035A	LDPE	Black	0.187	4.70	0.500	12.70	0.313	7.95	0.125	3.18	T	9000
BFSA060A	LDPE	Black	0.250	6.35	0.500	12.70	0.438	11.13	0.156	3.96	R	15000
BFSA080A	LDPE	Black	0.260	6.60	0.750	19.05	0.437	11.10	0.094	2.39	S	9000
BFSA100A	LDPE	Black	0.320	8.13	1.000	25.40	0.415	10.54	0.180	4.57	S	7000
BFSA110A	LDPE	Black	0.380	9.65	1.460	37.08	0.415	10.54	0.188	4.78	S	3000
SCP2520B	HDPE	Black	0.252	6.40	0.748	19.00	0.715	18.16	0.150	3.81	N	5000

### BDH Series Domed Split Stem Bumper



**Specifications:**

- Material: Nylon
- Color: Natural

**Features:**

- Domed head split bumpers are produced with a split-stem portion to make insertion easy and removal difficult
- The domed head makes them ideal for use as bumpers

Item No.	A		B		C		D		E		F		G		Stem Style	Head Style	Bulk Pack Qty
	In	mm	In	mm	In	mm	In	mm	In	mm	In	mm	In	mm			
BDH005A	0.109	2.77	0.250	6.35	0.203	5.16	0.093	2.36	0.125	3.18	0.046	1.17	0.063	1.60	I	A	40000
BDH010A	0.125	3.18	0.375	9.53	0.307	7.80	0.046	1.17	0.150	3.81	0.130	3.30	0.130	3.30	II	A	30000
BDH020A	0.156	3.96	0.375	9.53	0.265	6.73	0.093	2.36	0.173	4.39	0.093	2.36	0.093	2.36	II	B	20000
BDH025A	0.187	4.75	0.344	8.73	0.203	5.16	0.050	1.27	0.218	5.54	0.083	2.11	0.070	1.78	II	B	35000
BDH030A	0.187	4.75	0.390	9.91	0.250	6.35	0.093	2.36	0.218	5.54	0.088	2.24	0.068	1.73	II	B	24000
BDH040A	0.210	5.33	0.375	9.53	0.343	8.71	0.063	1.60	0.243	6.17	0.125	3.18	0.156	3.96	II	B	20000

### WCG Series Weld Caps for Wrought Iron



Style 1



Style 2

**Specifications:**

- Material: HDPE
- Color: Natural

**Features:**

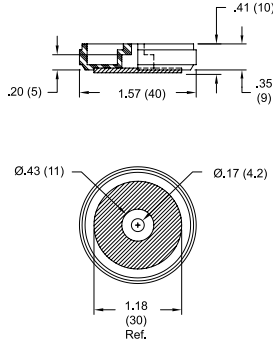
- Center air hole
- Fits standard steel weld cups

Item No.	I.D. of Weld Cup		Hole Size		Style	Bulk Pack Qty
	In	mm	In	mm		
WCG1000A	1.415	35.95	0.094	2.40	1	1800
WCG1100A	1.250	31.80	0.094	2.40	1	2500
WCG1200A	1.420	36.09	0.093	2.37	2	1800
WCG1300B	1.250	31.80	0.094	2.40	2	2800



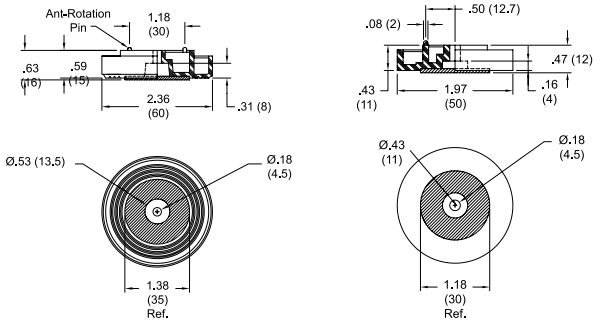
# BUMPERS

## BF Big Screw Mount Foot



**BF-1001**

- Ideal for heavy duty applications
- Mounted securely with a #8 (M4) pan head screw
- Nylon fiber pad material helps prevent abrasion
- Foot Material: UL94 HB ABS
- Pad Material: Nylon Fiber
- Color: Black

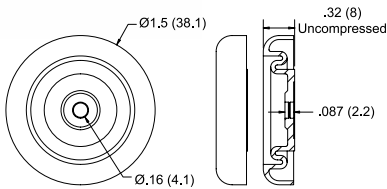


**BF-1002**

**BF-1005**

Item No.	Load Capacity	Bulk Pack Qty
<b>BF-1001</b>	22 lbs. (10 kg.)	100
<b>BF-1002</b>	22 lbs. (10 kg.)	100
<b>BF-1005</b>	22 lbs. (10 kg.)	100

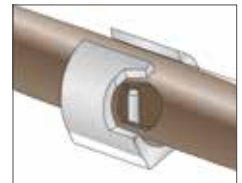
## SVF Shock & Vibration Dampening Foot



- Mounted with a #6 or #8 (M4) screw or an SR-40XX rivet (See page 119)
- Provides excellent shock and vibration control
- SVF-1 Material: UL94 HB TPE 75 Shore A
- SVF-2 Material: UL94 HB TPE 64 Shore A
- Color: Black

Item No.	Item No.	Bulk Pack Qty
<b>SVF-1</b>	<b>SVF-2</b>	400

## SG Series Snap-In Saddle Glides and Feet



- Specifications:
- Materials: ABS
  - Color: Black and Clear

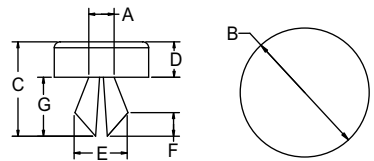
- Features:
- Designed to snap onto horizontal legs of chairs, tables and stands

Item No.	Tube Size In	Material	Color	Bulk Pack Qty
<b>SG1000B</b>	0.625	K-RESIN	Clear	4000
<b>SG1050A</b>	0.875	ABS	Black	2500
<b>SG1100A</b>	1.000	ABS	Black	1400

## BSS Series Flat Head Split Stem Bumpers

- Specifications:
- Material: Nylon
  - Color: Natural

- Features:
- Produced with a split stem portion and undercut to make insertion easy and removal difficult. Used as panel plugs and bumpers

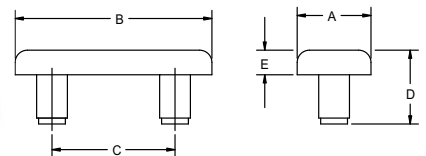


Item No.	To Fit Hole		A		B		C		D		E		F		G		Bulk Pack Qty
	In	mm	In	mm	In	mm	In	mm	In	mm	In	mm	In	mm	In	mm	
<b>BSS010A</b>	0.156	3.96	0.152	3.86	0.500	12.70	0.312	7.92	0.063	1.60	0.166	4.22	0.063	1.60	0.187	4.75	14000
<b>BSS015A</b>	0.265	6.73	0.260	6.60	0.750	19.00	0.625	15.88	0.187	4.75	0.290	7.37	0.125	3.18	0.312	7.92	10500

## BDS Series Double Stem Bumpers

- Specifications:
- Natural Nylon

- Features:
- Designed for applications requiring a bumper with a large head area



Item No.	To Fit Hole		A		B		C		D		E		Bulk Pack Qty
	In	mm	In	mm	In	mm	In	mm	In	mm	In	mm	
<b>BDS010A</b>	0.187	4.75	0.375	9.53	1.000	25.40	0.625	15.88	0.500	12.70	0.125	3.18	3500

# BUMPERS & STICK ON FEET



## RBS/STF Series Bumpers/Stick-On Feet



### Specifications:

- Material: Polyurethane
- Adhesive: Rubber
- Color: Clear or Black
- Application Temperature: 65°F to 150°F

### Features:

- Will not tarnish, scratch, or discolor any surface
- Easy to use - simply peel & stick
- Adhesion works best on a smooth, clean & dry surface
- Commonly used as rubber feet, cabinet stoppers, door stops & surface protectors

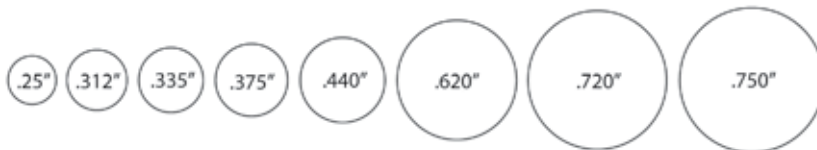
### Cylindrical On A Pad



Actual Size (Diameter)

Clear	Item No.	Black	Dia.		Height		Pieces/Pad	Pack Qty
			In	mm	In	mm		
RBS-34		RBS-34BK	0.375	9.5	0.125	3.2	300	300
RBS-35		RBS-35BK	0.375	9.5	0.190	4.8	50	200
RBS-5		RBS-5BK	0.500	12.7	0.060	1.5	200	200
RBS-1		RBS-1BK	0.500	12.7	0.140	3.6	200	200
RBS-6		RBS-6BK	0.500	12.7	0.250	6.4	50	200
RBS-11		RBS-11BK	0.620	15.7	0.400	10.2	128	128
RBS-44		RBS-44BK	0.750	19.1	0.160	4.1	98	98
RBS-41		RBS-41BK	0.780	19.8	0.200	5.1	84	84
RBS-24		RBS-24BK	0.810	20.6	0.120	3	72	72
RBS-72		RBS-72BK	1.240	31.5	0.100	2.5	32	32

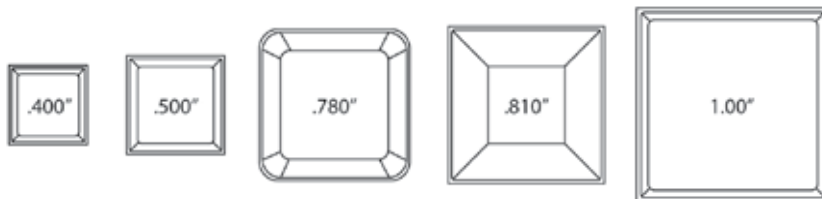
### Hemisphere On A Pad



Actual Size (Diameter)

Clear	Item No.	Pack Qty.	Black	Item No.	Pack Qty.	Dia.		Height		Pieces/Pad
						In	mm	In	mm	
RBS-40		578	RBS-40BK		578	0.250	6.4	0.062	1.6	578
STFHEM250087A		450	STFHEM250087B		450	0.250	6.4	0.087	2.2	450
RBS-27		450	RBS-27BK		450	0.312	7.9	0.085	2.2	450
RBS-7		450	RBS-7BK		450	0.335	8.5	0.085	2.2	450
RBS-12		72	RBS-12BK		72	0.375	9.5	0.150	3.8	72
RBS-22		300	RBS-22BK		300	0.375	9.5	0.221	5.6	300
RBS-10		288				0.390	9.9	0.120	3.0	288
RBS-2		242	RBS-2BK		242	0.440	11.2	0.200	5.1	242
RBS-15		128	RBS-15BK		128	0.620	15.7	0.310	7.9	128
RBS-8		98	RBS-8BK		98	0.720	18.3	0.380	9.7	98
RBS-37		100	RBS-37BK		100	0.720	18.3	0.560	14.2	100
RBS-39		84	RBS-39BK		84	0.750	19.1	0.075	1.9	98

### Square On A Pad



Actual Size (Width / Length)

Clear	Item No.	Pack Qty.	Black	Item No.	Pack Qty.	Dia.		Height		Pieces/Pad
						In	mm	In	mm	
RBS-20		242	RBS-20BK		242	0.400	10.2	0.100	2.5	242
RBS-32R		200	RBS-32RBK		200	0.500	12.7	0.120	3.0	200
RBS-3R		200	RBS-3RBK		200	0.500	12.7	0.230	5.8	200
RBS-4		100	RBS-4BK		100	0.750	19.1	0.340	8.6	100
RBS-29		98	RBS-29BK		98	0.780	19.8	0.250	6.4	98
RBS-19		98	RBS-19BK		98	0.810	20.6	0.300	7.6	98
RBS-36		55	RBS-36BK		55	1.000	25.4	0.180	4.6	55

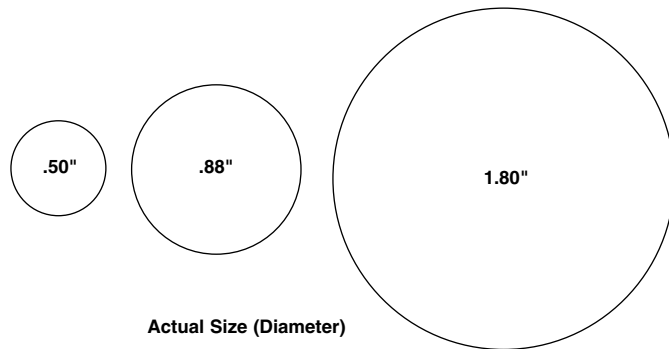




## BUMPERS & STICK ON FEET

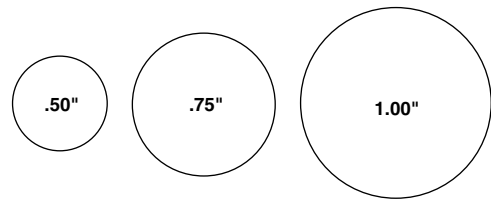
### RBS Series Bumpers/Stick-On Feet (continued)

#### Round Recessed On A Pad



Item No.	Pack Qty.	Item No.	Pack Qty.	Dia.		Height		Pieces/Pad
				In	mm	In	mm	
Clear		Black						
RBS-18	200	RBS-18BK	200	0.500	12.7	0.140	3.6	200
RBS-17	72	RBS-17BK	72	0.880	22.4	0.400	10.2	72
RBS-30	100	RBS-30BK	100	1.800	45.7	0.600	15.2	100

### ASP Series Anti Slip Pads Round On A Roll

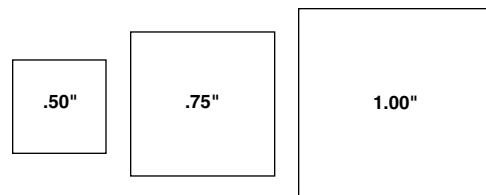


Specifications:

- Material: Polyethylene Foam
- High tack permanent adhesive

Item No.	Dia. A		Height		Pieces/Roll
	In	mm	In	mm	
ASPR-8-062	0.500	12.7	0.062	1.6	1000
ASPR-12-062	0.750	19.1	0.062	1.6	1000
ASPR-16-062	1.000	25.4	0.062	1.6	1000
ASPR-8-125	0.500	12.7	0.125	3.2	1000
ASPR-12-125	0.750	19.1	0.125	3.2	1000
ASPR-16-125	1.000	25.4	0.125	3.2	1000

### Square On A Pad

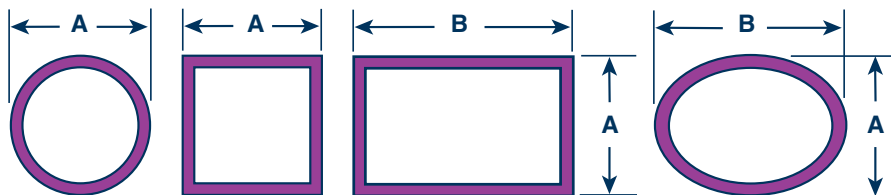


Item No.	A		Height		Pieces/Pad
	In	mm	In	mm	
ASPS-8-062	0.500	12.7	0.062	1.6	40
ASPS-12-062	0.750	19.1	0.062	1.6	20
ASPS-16-062	1.000	25.4	0.062	1.6	8
ASPS-8-125	0.500	12.7	0.125	3.2	40
ASPS-12-125	0.750	19.1	0.125	3.2	20
ASPS-16-125	1.000	25.4	0.125	3.2	8

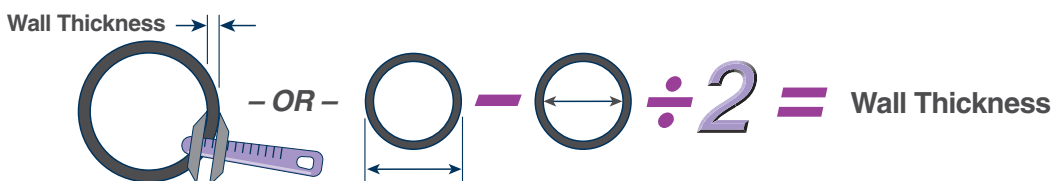
# TUBE INSERT & GLIDE SELECTOR GUIDE



## Step 1: Determine Tube Size = Actual O.D. of Tubing



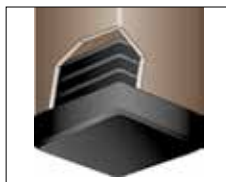
## Step 2: Determine the Wall Thickness to Determine Tube Gauge



Wall Thickness (Inches)	0.239	0.224	0.209	0.194	0.179	0.164	0.149	0.134	0.120	0.109	0.095	0.083	0.072	0.065	0.058	0.049	0.042	0.035	0.028
(mm)	6.1	5.7	5.3	4.9	4.5	4.2	3.8	3.4	3	2.8	2.4	2.1	1.8	1.7	1.5	1.2	1.1	0.9	0.7
Tube Gauge	3	4	5	6	7	8	9	10	11	12	13	14	15	16	17	18	19	20	22

## Step 3: Select your desired...

### Style:



**Ribbed Design – Fits Multiple Gauges Non-Load Bearing**



**Straight Wall Design – Fits Single Gauge Load Bearing**

### Shape & Finish:

**Flat, Rounded, Angled, or Articulating**



**Polished, Textured (Matte), or Chromed**

