

# ECS-P-122X169-S-UV1-VC4AML2/6 - Front plate



1143770

<https://www.phoenixcontact.com/us/products/1143770>

Please be informed that the data shown in this PDF document is generated from our online catalog. Please find the complete data in the user documentation. Our general terms of use for downloads are valid.

ECS family faceplate, ready for integration of one modular rectangular connector Variocon VC4, screw locking, rated IP66/67/69 when combined with ECS housing, Color: Black (9005), Width: 163 mm, Height: 30 mm, Depth: 62 mm



## Your advantages

- Housing design supports the installation of a range of PCB thicknesses for high application diversity
- Optional accessories for wall and mast mounting
- Proven PCB connection technology
- Integrated tamper protection
- Effective protection of electronics against thermal and mechanical influences

## Commercial data

Item number	1143770
Packing unit	5 pc
Minimum order quantity	5 pc
Sales key	AC04
Product key	ACFDAB
GTIN	4063151129774
Weight per piece (including packing)	105.76 g
Weight per piece (excluding packing)	56 g
Customs tariff number	84879090
Country of origin	US

# ECS-P-122X169-S-UV1-VC4AML2/6 - Front plate



1143770

<https://www.phoenixcontact.com/us/products/1143770>

## Technical data

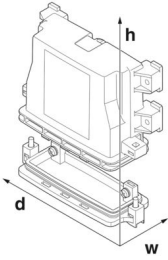
### Notes

General	Refer to the data sheet for the range in the download area.
---------	---

### Product properties

Product type	Front plate
Housing series	ECS
Housing type	outdoor housings

### Dimensions

Dimensional drawing	
Width	163 mm
Height	30 mm
Depth	62 mm

PCB design	
PCB thickness	1.57 mm ... 2.36 mm

### Material specifications

Color (Housing)	black (RAL 9005)
Flammability rating according to UL 94	V0
Housing material	PC (polycarbonate)
Surface characteristics	untreated
Impact strength	IK08

### Environmental and real-life conditions

Vibration test	
Specification	IEC 60068-2-6:2007-12
Frequency	10 - 2000 - 10 Hz
Sweep speed	1 octave/min
Acceleration	15g (61.6 Hz ... 2000 Hz)
Test duration per axis	2.5 h
Test directions	X-, Y- and Z-axis

Glow-wire test	
Specification	IEC 60695-2-11:2014-02

# ECS-P-122X169-S-UV1-VC4AML2/6 - Front plate



1143770

<https://www.phoenixcontact.com/us/products/1143770>

Temperature	850 °C
Time of exposure	30 s

## Mechanical strength / tumbling barrel

Specification	IEC 60068-2-31:2008-05
Height of fall	50 cm
Frequency	50

## Shocks

Specification	IEC 60068-2-27:2008-02
Pulse shape	Semi-sinusoidal
Acceleration	50g
Shock duration	11 ms
Number of shocks per direction	3
Test directions	X-, Y- and Z-axis (pos. and neg.)

## Salt spray test

Specification	DIN EN 60068-2-11:2000-02
Test duration	96 h

## Test for substances that would hinder coating with paint or varnish

Specification	VDMA 24364:2018-05
Result	Test passed

## Degree of protection (IP code)

Specification	IEC 60529:1989-11 + AMD 1:1999-11 + AMD 2:2013-08
Result, degree of protection, IP code	IP66/IP68 (2 m/24 h)

## Ambient conditions

Degree of protection	IP66/IP67
Max. NEMA code to attain	6
Impact strength	IK08
Ambient temperature (operation)	-40 °C ... 100 °C
Ambient temperature (storage/transport)	-40 °C ... 100 °C

## PCB data

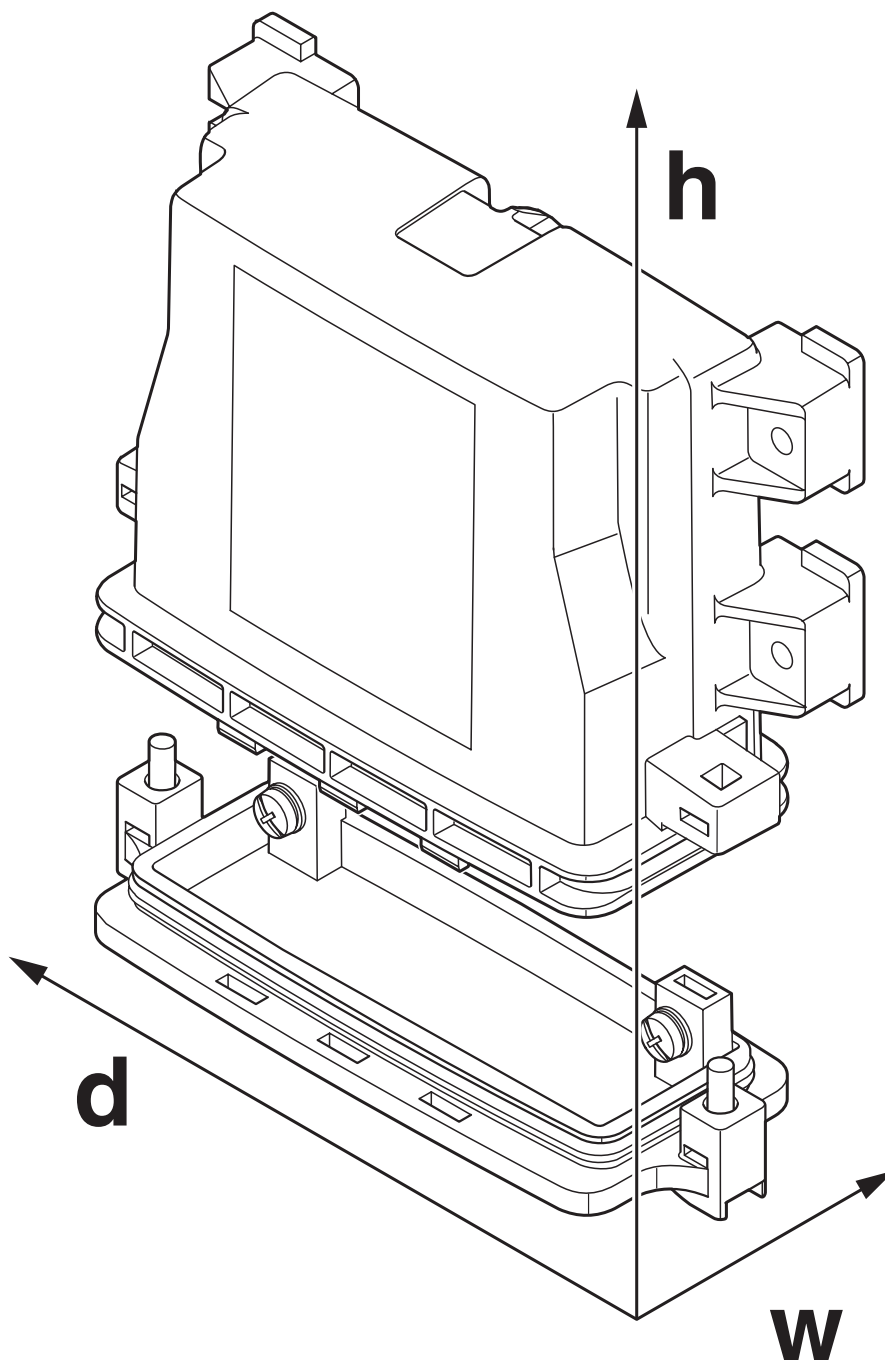
Number of PCB holders	1
Thickness of the PCB	1.57 mm ... 2.36 mm

## Mounting

Mounting type	Screw locking mechanism
---------------	-------------------------

## Drawings

Dimensional drawing



Schematic figure for illustrating the item dimensions. The figure is not of the desired product. For further details, refer to the product drawings in the "Downloads" tab.

# ECS-P-122X169-S-UV1-VC4AML2/6 - Front plate



1143770

<https://www.phoenixcontact.com/us/products/1143770>

## Classifications

### ECLASS

ECLASS-11.0	27182702
ECLASS-13.0	27190603

### ETIM

ETIM 9.0	EC001031
----------	----------

### UNSPSC

UNSPSC 21.0	31261500
-------------	----------

# ECS-P-122X169-S-UV1-VC4AML2/6 - Front plate



1143770

<https://www.phoenixcontact.com/us/products/1143770>

## Mandatory accessories

### ECS-B-122X169-S-UV1-V - Electronics housing

2230002

<https://www.phoenixcontact.com/us/products/2230002>



Screw locking vented enclosure of the ECS Family. IP66/67/69 rated when mated with associated faceplate. Color: Black (9005), Width: 164 mm, Height: 176 mm, Depth: 64 mm

---

### ECS-B-122X169-S-UV1-NV - Electronics housing

2230003

<https://www.phoenixcontact.com/us/products/2230003>



Screw locking non-vented enclosure of the ECS family. IP66/67/69 rated when mated with associated faceplate. Color: Black (9005), Width: 164 mm, Height: 176 mm, Depth: 64 mm

# ECS-P-122X169-S-UV1-VC4AML2/6 - Front plate



1143770

<https://www.phoenixcontact.com/us/products/1143770>

## ECS-B-122X109-S-UV1-V - Electronics housing

1054710

<https://www.phoenixcontact.com/us/products/1054710>



Screw locking vented enclosure of the ECS Family. IP66/67/69 rated when mated with associated faceplate. Color: Black (9005), Width: 164 mm, Height: 116 mm, Depth: 64 mm

---

## ECS-B-122X109-S-UV1-NV - Electronics housing

1054711

<https://www.phoenixcontact.com/us/products/1054711>



Screw locking non-vented enclosure of the ECS family. IP66/67/69 rated when mated with associated faceplate. Color: Black (9005), Width: 164 mm, Height: 116 mm, Depth: 64 mm

---

## Accessories

# ECS-P-122X169-S-UV1-VC4AML2/6 - Front plate



1143770

<https://www.phoenixcontact.com/us/products/1143770>

## SF-TXH 20X100 - Screwdriver

1200151

<https://www.phoenixcontact.com/us/products/1200151>

Screwdriver, Torx<sup>®</sup> with bore hole, TX 20 x 100, two-component handle



---

## SZF 1-0,6X3,5 - Screwdriver

1204517

<https://www.phoenixcontact.com/us/products/1204517>

Actuation tool, for ST terminal blocks, also suitable for use as a bladed screwdriver, size: 0.6 x 3.5 x 100 mm, 2-component grip, with non-slip grip





## ECS-P-122X169-S-UV1-VC4AML2/6 - Front plate

1143770

<https://www.phoenixcontact.com/us/products/1143770>



## WT-STEEL SH 4,6X150 - Cable tie

3240820

<https://www.phoenixcontact.com/us/products/3240820>



Cable binders, made from rust-free stainless steel (AISI 316), suitable for the harshest of ambient conditions (for example, salt water), with ball lock, for quick and secure bundling and fastening

---

## HS LC-V-T-D4X5,2S-45 - Fiber optic

1082300

<https://www.phoenixcontact.com/us/products/1082300>



Vertical 4 mm light guide, transparent, with spherical 5.2 mm raised head, assembly for wall thicknesses from 1 mm, made of polycarbonate (UL 94-V0), installation length 45 mm, watertight, IP68 (EN 50529)

# ECS-P-122X169-S-UV1-VC4AML2/6 - Front plate



1143770

<https://www.phoenixcontact.com/us/products/1143770>

## HS LC-F-T6X3-150 - Fiber optic

1082301

<https://www.phoenixcontact.com/us/products/1082301>



Flexible light guide, transparent 3 mm made of PMMA (UL 94-V0) with 6 mm lens, made of crystal-clear polycarbonate and 6x6 mm LED housing, black polycarbonate PC (UL 94), length: 150 mm unmounted, for SMD TOPLEDs

---

## HS LCA-RGB-10X5-L - Signal light

1082299

<https://www.phoenixcontact.com/us/products/1082299>



10 mm signal light with SMD-LED 5 mm (color: RGB) for assembly on wall thicknesses from 1.5 mm. Black housing made of polycarbonate (UL 94-V0) with four 94 mm tin-plated free wire ends, watertight IP68 (EN 60529)

## ECS-P-122X169-S-UV1-VC4AML2/6 - Front plate

1143770

<https://www.phoenixcontact.com/us/products/1143770>



### ECS-BL - Safety clip

2230012

<https://www.phoenixcontact.com/us/products/2230012>

PCB safety clip



---

### ECS-PM - Mounting bracket

2230013

<https://www.phoenixcontact.com/us/products/2230013>

Mounting set for mast mounting



# ECS-P-122X169-S-UV1-VC4AML2/6 - Front plate



1143770

<https://www.phoenixcontact.com/us/products/1143770>

## ECS-PCB - PCB

1004300

<https://www.phoenixcontact.com/us/products/1004300>

Printed-circuit board



---

## VC-AR4/5M - Panel mounting frames

1853007

<https://www.phoenixcontact.com/us/products/1853007>



Panel mounting frames, Range of articles: VARIOCON, design: VC4, housing material: Polyamide. 2 x 1852862 VC-AF for each connector

# ECS-P-122X169-S-UV1-VC4AML2/6 - Front plate



1143770

<https://www.phoenixcontact.com/us/products/1143770>

## VC-AF - Panel-mount flange

1852862

<https://www.phoenixcontact.com/us/products/1852862>



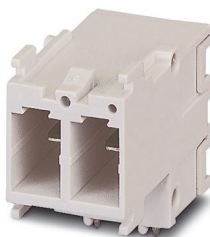
Panel mounting flange for screw locking, for mounting contact insert modules, for a panel thickness of 1 - 5 mm

---

## VC-AML 2 - Contact insert

1852859

<https://www.phoenixcontact.com/us/products/1852859>



Contact insert, Range of articles: VARIOCON, housing material: Polyamide, color: light grey, number of positions: 2, rated voltage: 400, rated current: 20 A, Connection method: PCB connection, Contact connection type: Pin. Connectors may only be connected/disconnected when under no load.

# ECS-P-122X169-S-UV1-VC4AML2/6 - Front plate



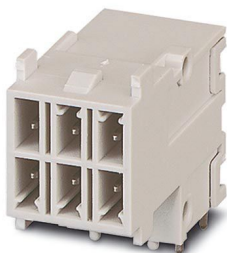
1143770

<https://www.phoenixcontact.com/us/products/1143770>

## VC-AML 6 - Contact insert

1853531

<https://www.phoenixcontact.com/us/products/1853531>



Contact insert, Range of articles: VARIOCON, housing material: Polyamide, color: light grey, number of positions: 6, rated voltage: 250, rated current: 10 A, Connection method: PCB connection, Contact connection type: Pin. Connectors may only be connected/disconnected when under no load.

---

## VC-TR4/5M-PEA-S22222-SET - Contact insert set

1607178

<https://www.phoenixcontact.com/us/products/1607178>



Contact insert set for sleeve side, sleeve frame with PE, 4 fixing screws, 2-pos. contact inserts preassembled, 6 coding profiles

# ECS-P-122X169-S-UV1-VC4AML2/6 - Front plate



1143770

<https://www.phoenixcontact.com/us/products/1143770>

## VC-K-T4-R-M25 - Sleeve housing

1855133

<https://www.phoenixcontact.com/us/products/1855133>



Sleeve housing, Range of articles: VARIOCON, design: VC4, housing material: Polyamide, color: gray. When using fiber optics, the bending radii of the cable manufacturers must be observed.

---

## A-INL-M25-P-LG - Counter nut

1417661

<https://www.phoenixcontact.com/us/products/1417661>

Counter nut, for threads M25 x 1.5, color: light grey



---

Phoenix Contact 2024 © - all rights reserved  
<https://www.phoenixcontact.com>

Phoenix Contact USA  
586 Fulling Mill Road  
Middletown, PA 17057, United States  
(+717) 944-1300  
[info@phoenixcon.com](mailto:info@phoenixcon.com)