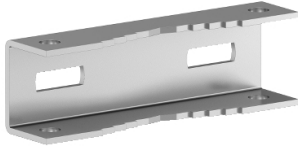


Product data sheet

Specifications



Post fixing device WM PanelSeT,
length 600. For post max 675. Max.
Load:100kg.

NSYSFPSC60

Overview

Lead Time Usually Ships within 4 Weeks

Main

Range	PanelSeT
Accessory / Separate Part Category	Fixing accessory
Product Or Component Type	Post fixing device
Device Application	Multi-purpose
Enclosure Nominal Dimensions	-
Mounting Location	Rear of enclosure
Range Compatibility	PanelSeT PanelSeT S3D PanelSeT PanelSeT SBM PanelSeT PanelSeT CRN
Device Composition	fixing elements 2 support rail 2 strip
Quantity Per Set	Set of 1

Complementary

Material	Galvanised steel
Fixing Mode	By fixing element - screw type M8 - to the inserts in the rear of the enclosure location Minimum diameter 150 mm Maximum diameter 215 mm
Permanent Permissible Load	100 kg
Height	45 mm
Width	595 mm
Depth	32.5 mm
Net Weight	3.2 kg

Packing Units

Unit Type Of Package 1	PCE
Number Of Units In Package 1	1
Package 1 Height	59.6 cm
Package 1 Width	14.0 cm
Package 1 Length	4.0 cm
Package 1 Weight	3.2 kg

Contractual warranty

Warranty

18 months

Sustainability

Green Premium™ label is Schneider Electric's commitment to delivering products with best-in-class environmental performance. Green Premium promises compliance with the latest regulations, transparency on environmental impacts, as well as circular and low-CO₂ products.

Guide to assessing product sustainability is a white paper that clarifies global eco-label standards and how to interpret environmental declarations.

[Learn more about Green Premium >](#)

[Guide to assess a product's sustainability >](#)



Transparency RoHS/REACH

Well-being performance

✓ Reach Free Of Svhc

✓ Toxic Heavy Metal Free

✓ Mercury Free

✓ Rohs Exemption Information Yes

Certifications & Standards

Reach Regulation

[REACH Declaration](#)

Eu Rohs Directive

Pro-active compliance (Product out of EU RoHS legal scope)

[EU RoHS Declaration](#)

China Rohs Regulation

[China RoHS declaration](#)

Pro-active China RoHS declaration (out of China RoHS legal scope)

Environmental Disclosure

[Product Environmental Profile](#)

Circularity Profile

No need of specific recycling operations