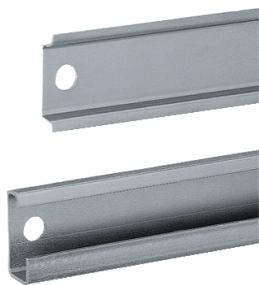


# Product data sheet

Specifications



One symmetric mounting rail 35x15  
L600mm type A - Wall mounting -  
Supply: 20

NSYSDR60A

## Main

Anwendung	Multi-purpose
Range	PanelSeT
Product Or Component Type	Rail
Accessory / Separate Part Categor	Mounting accessory
Type Of Rail	Symmetrical DIN
Enclosure Nominal Dimensions	-
Range Compatibility	PanelSeT PanelSeT CRN PanelSeT PanelSeT S3D Thalassa Thalassa PLM
Device Composition	fixing elements 1 rail
Quantity Per Set	Set of 20

## Complementary

Material	Zinc coated steel
Surface Finish	Zinc coated
Fixing Mode	By fixing element - structure of enclosure location
Adjustment	Continuous adjustment Pitch 25 mm
Length	Nominal: 600 mm Real: 550 mm
Height	Nominal: 15 mm
Width	Nominal: 35 mm
Thickness	1.5 mm

## Packing Units

Unit Type Of Package 1	PCE
Number Of Units In Package 1	1
Package 1 Height	1.5 cm
Package 1 Width	3.5 cm
Package 1 Length	54.5 cm
Package 1 Weight	384.0 g

## Contractual warranty

Disclaimer: This documentation is not intended as a substitute for and is not to be used for determining suitability or reliability of these products for specific user applications

Warranty

18 months

## Sustainability

**Green Premium™ label** is Schneider Electric's commitment to delivering products with best-in-class environmental performance. Green Premium promises compliance with the latest regulations, transparency on environmental impacts, as well as circular and low-CO<sub>2</sub> products.

**Guide to assessing product sustainability** is a white paper that clarifies global eco-label standards and how to interpret environmental declarations.

[Learn more about Green Premium >](#)

[Guide to assess a product's sustainability >](#)



Transparency   RoHS/REACH

## Well-being performance

✓ Reach Free Of Svhc

✓ Toxic Heavy Metal Free

✓ Mercury Free

✓ Rohs Exemption Information   Yes

## Certifications & Standards

Reach Regulation	<a href="#">REACH Declaration</a>
Eu Rohs Directive	Pro-active compliance (Product out of EU RoHS legal scope) <a href="#">EU RoHS Declaration</a>
China Rohs Regulation	<a href="#">China RoHS declaration</a> Pro-active China RoHS declaration (out of China RoHS legal scope)
Environmental Disclosure	<a href="#">Product Environmental Profile</a>
Circularity Profile	No need of specific recycling operations