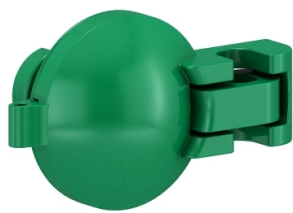


# Product data sheet

Specifications

## sealing kit for PanelSeT SBM



NSYPPSB

### Main

Range	PanelSeT
Product Or Component Type	Sealing

### Complementary

Accessory / Separate Part Categor	Locking accessory
Accessory / Separate Part Type	Plumbing triangle
Device Application	Multi-purpose
Mounting Support	Direct mounting on box
Range Compatibility	PanelSeT PanelSeT SBM
Device Composition	1 washer
Material	Plastic
Net Weight	0.01 kg
Lock Type	Possibility to seal it

### Environment

Ip Degree Of Protection	IP66
-------------------------	------

### Packing Units

Unit Type Of Package 1	PCE
Number Of Units In Package 1	1
Package 1 Height	1.5 cm
Package 1 Width	7.0 cm
Package 1 Length	9.0 cm
Package 1 Weight	3.0 g
Unit Type Of Package 2	PAL
Number Of Units In Package 2	600
Package 2 Height	40.0 cm
Package 2 Width	40.0 cm
Package 2 Length	60.0 cm
Package 2 Weight	1.8 kg

Disclaimer: This documentation is not intended as a substitute for and is not to be used for determining suitability or reliability of these products for specific user applications

## Sustainability

**Green Premium™ label** is Schneider Electric's commitment to delivering products with best-in-class environmental performance. Green Premium promises compliance with the latest regulations, transparency on environmental impacts, as well as circular and low-CO<sub>2</sub> products.

**Guide to assessing product sustainability** is a white paper that clarifies global eco-label standards and how to interpret environmental declarations.

[Learn more about Green Premium >](#)

[Guide to assess a product's sustainability >](#)



Transparency   RoHS/REACH

## Well-being performance

✓ Reach Free Of Svhc

✓ Toxic Heavy Metal Free

✓ Mercury Free

✓ Rohs Exemption Information   Yes

## Certifications & Standards

Reach Regulation	<a href="#">REACH Declaration</a>
Eu Rohs Directive	Pro-active compliance (Product out of EU RoHS legal scope) <a href="#">EU RoHS Declaration</a>
China Rohs Regulation	<a href="#">China RoHS declaration</a> Pro-active China RoHS declaration (out of China RoHS legal scope)
Environmental Disclosure	<a href="#">Product Environmental Profile</a>
Circularity Profile	No need of specific recycling operations