

1

2

3

4

5

6

7

A

A

B

B

C

C

D

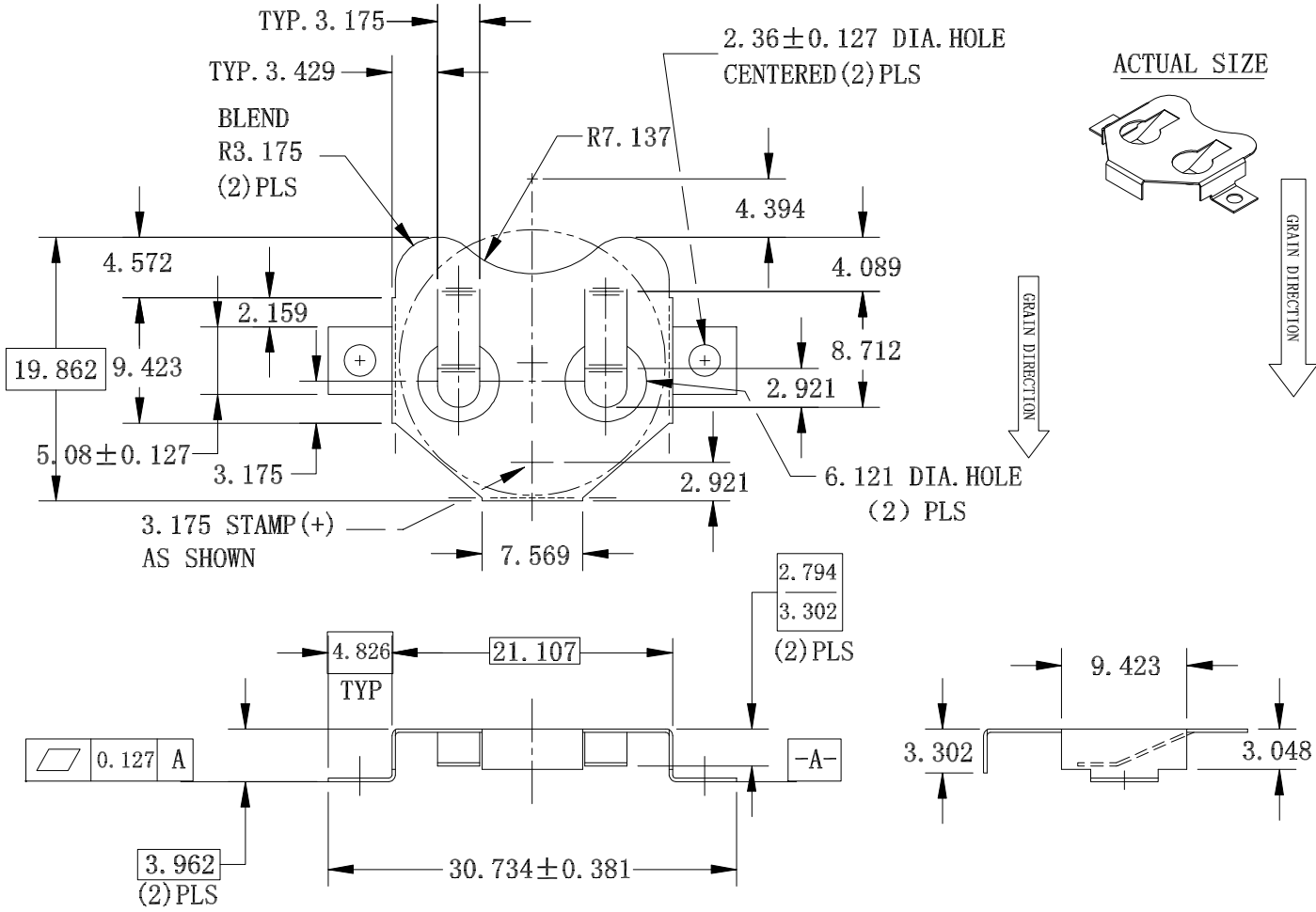
D

E

E

F

F



ACTUAL SIZE

NOTE:

- 1.MATERIAL: Phosphor Bronze, 0.254 Thickness Full Hard
- 2.FINISH: Nickel Plate 0.00254-0.00762 Nickel, Over 0.00127-0.00254 Copper
- 3.Geometry
 - 3.1 All inside bend radii to be a min. of material thickness unless otherwise specified
 - 3.2 Part must be free of all burrs and sharp edges
 - 3.3 Indicates critical dimension
- 4.Packing: Tape & Reel

G

G

H

H

RoHS compliant
unit:mm

Scale	Free
TOLERANCE	
X.	± 0.35
.X	± 0.25
.XX	± 0.20
.XXX	± 0.15
DIM	TOL
Angle	TOL

Drawn	29.11.2021	Peter	ASSMANN WSW components
Approved	29.11.2021	Peter	
①	Drawn	29.11.2021	Peter
Id.	modification	Date	Name

Description: Battery Contacts CR2032 Type	
ASSMANN WSW-NO. A-BAT-CH-C8-EA-CSR3	
Drawing-No. ASS 9104 CO	rev00
Customer-No.	SHEET 1 / 2

1

2

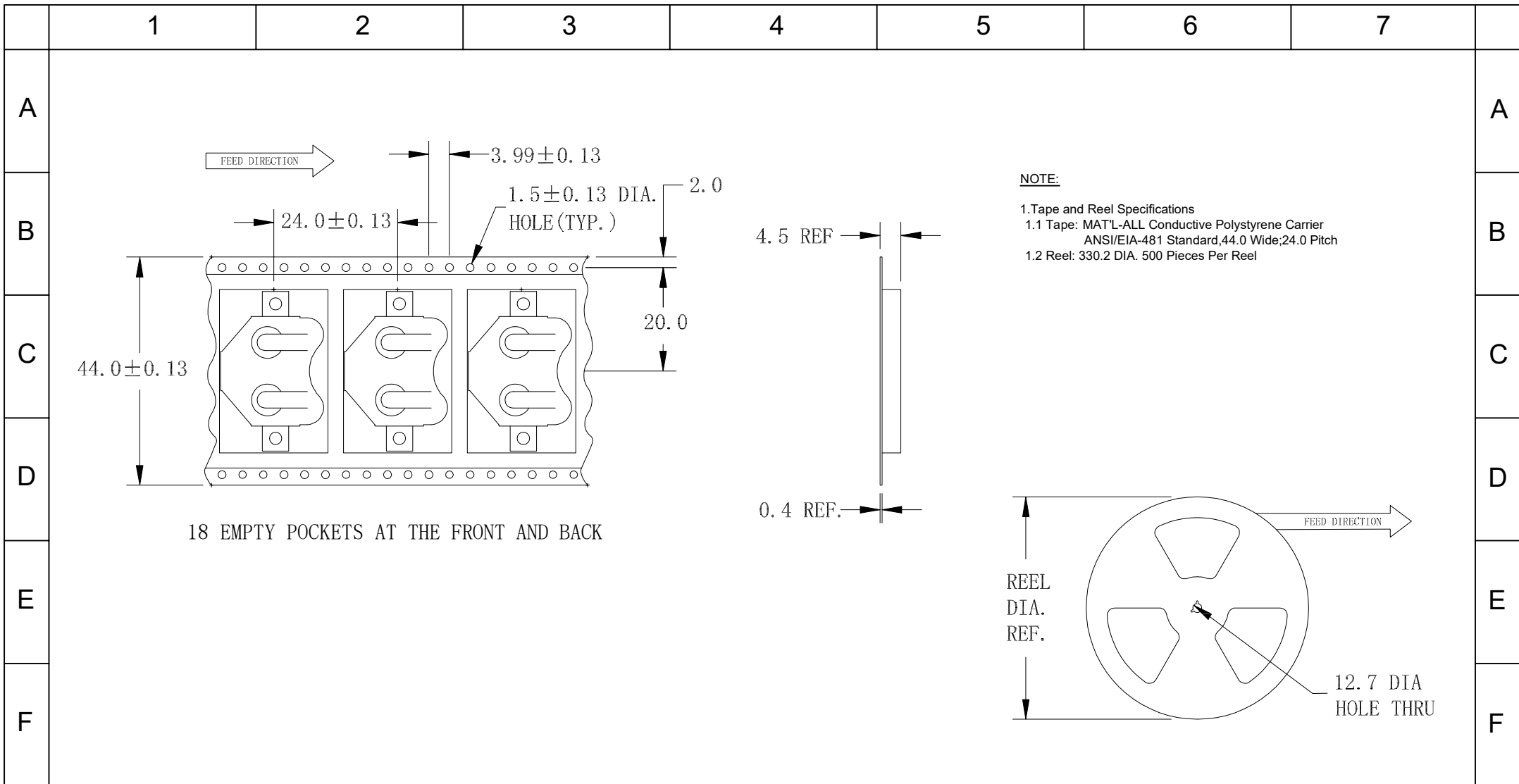
3

4

5

6

7



G	RoHS compliant unit:mm	Scale	Free					Date	Name	Description: Battery Contacts Packing Method	
		TOLERANCE						Drawn	Peter		
H		X.	±0.35					Approved	Peter	ASSMANN WSW-NO. A-BAT-CH-C8-EA-CSR3	
		.X	±0.25								
		.XX	±0.20								
		.XXX	±0.15								Drawing-No. ASS 9104 CO rev00
		DIM	TOL	Ⓞ	Drawn	29.11.2021	Peter			Customer-No.	
		Angle	TOL	Id.	modification	Date	Name				