



3 dB Fixed Attenuator, SMA Male to SMA Female
Stainless Steel Body Rated to 2 Watts, DC to 12 GHz

RF Fixed Attenuators Technical Data Sheet

PE7466-3

Features

- DC to 12 GHz Frequency Range
- SMA Connectorized Design
- Attenuation 3 dB \pm 1 dB
- Max Power 2 Watts (CW)
- Max VSWR of 1.35:1

Applications

- Instrumentation
- Precision Measurements
- Prototyping and Characterization
- Production Systems
- WIFI 6E
- 5G Cellular bands

Description

Pasternack carries a wide range of fixed attenuators with a broad selection of attenuation levels, frequency ranges, and power dissipation ranges. RF microwave attenuators (also known as RF pads) lower the amplitude of a signal (attenuate) a known amount and can be used in a wide variety of applications. These attenuator pads are used when a signal needs to be reduced to protect measurement equipment or other circuitry, to extend the range of power meters and amplifiers, and to impedance match circuits by reducing the VSWR seen by adjacent components. RF attenuators can prevent signal overload in amplifiers, receivers and detectors, adjusting the signal level to a range that is optimal.

Few RF components are as commonly used as fixed coaxial attenuators, and Pasternack carries one of the largest in-stock varieties and ships them same day. The 3 dB Fixed Attenuator PE7466-3 is rated to and operates from DC to 12 GHz. The versatile coaxial package uses SMA female to SMA male connectors.

Electrical Specifications

Description	Minimum	Typical	Maximum	Units
Frequency Range	DC		12	GHz
Impedance		50		Ohms
Nominal Attenuation		3		dB
VSWR			1.35:1	
Input Power, CW			2	Watts

Specifications by Frequency

Description	F1	F2	F3	F4	F5	Units
Frequency Range	DC to 2	2 to 5	5 to 10	10 to 12		GHz
VSWR, Max	1.15:1	1.25:1	1.35:1	1.35:1		
Attenuation Accuracy, Typ	0.2	0.3	0.5	1		dB

Click the following link (or enter part number in "SEARCH" on website) to obtain additional part information including price, inventory and certifications: [3 dB Fixed Attenuator, SMA Male to SMA Female Stainless Steel Body Rated to 2 Watts, DC to 12 GHz PE7466-3](#)



3 dB Fixed Attenuator, SMA Male to SMA Female
Stainless Steel Body Rated to 2 Watts, DC to 12 GHz

RF Fixed Attenuators Technical Data Sheet

PE7466-3

Mechanical Specifications

Size

Length	0.969 in [24.61 mm]
Width/Diameter	0.315 in [8 mm]
Height	0.315 in [8 mm]
Weight	0.015 lbs [6.8 g]
Body Material and Plating	Passivated Stainless Steel

Configuration

Design	Fixed, Bi-Directional
Package Style	Conectorized

Connectors

Description	Connector 1	Connector 2
Type	SMA Female	SMA Male
Contact Material and Plating	Beryllium Copper, Gold	Beryllium Copper, Gold
Dielectric Type	Teflon	Teflon
Body Material and Plating	Passivated Stainless Steel	Passivated Stainless Steel

Environmental Specifications

Compliance Certifications (see [product page](#) for current document)

Plotted and Other Data

Notes:

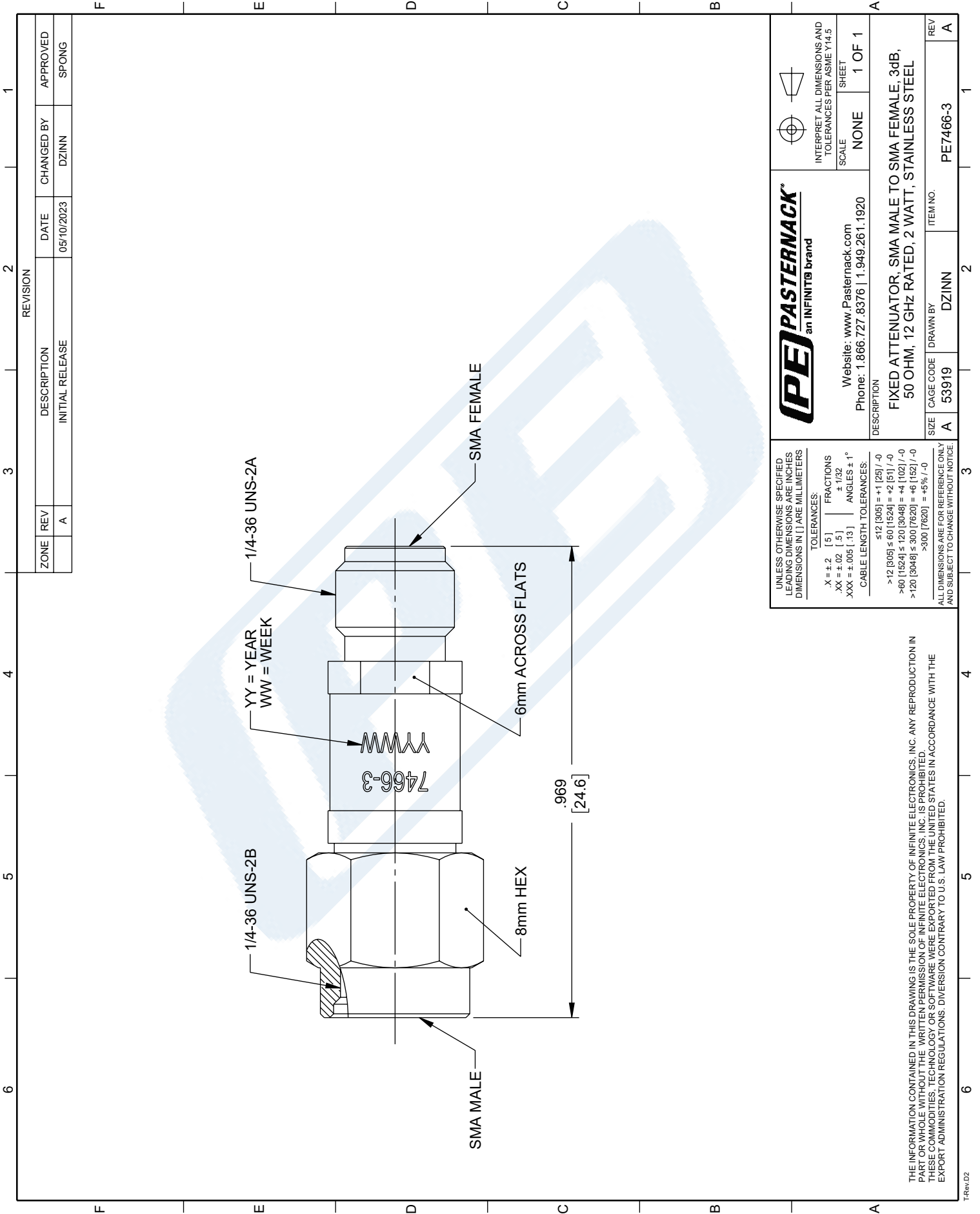
3 dB Fixed Attenuator, SMA Male to SMA Female Stainless Steel Body Rated to 2 Watts, DC to 12 GHz from Pasternack Enterprises has same day shipment for domestic and International orders. Our RF, microwave and millimeter wave products maintain a 99.4% availability and are part of the broadest selection in the industry.

Click the following link (or enter part number in "SEARCH" on website) to obtain additional part information including price, inventory and certifications: [3 dB Fixed Attenuator, SMA Male to SMA Female Stainless Steel Body Rated to 2 Watts, DC to 12 GHz PE7466-3](#)

URL: <https://www.pasternack.com/3db-fixed-sma-female-sma-male-0-watts-attenuator-pe7466-3-p.aspx>

PE7466-3 CAD Drawing

3 dB Fixed Attenuator, SMA Male to SMA Female Stainless Steel Body Rated to 2 Watts, DC to 12 GHz



REVISION			
ZONE	REV	DESCRIPTION	DATE
	A	INITIAL RELEASE	05/10/2023
		CHANGED BY	DZINN
		APPROVED	SPONG

 an INFINITI® brand	Website: www.Pasternack.com Phone: 1.866.727.8376 1.949.261.1920	INTERPRET ALL DIMENSIONS AND TOLERANCES PER ASME Y14.5 SCALE: NONE SHEET: 1 OF 1
	DESCRIPTION: FIXED ATTENUATOR, SMA MALE TO SMA FEMALE, 3dB, 50 OHM, 12 GHz RATED, 2 WATT, STAINLESS STEEL	SIZE: A CAGE CODE: 53919 DRAWN BY: DZINN ITEM NO.: PE7466-3

UNLESS OTHERWISE SPECIFIED LEADING DIMENSIONS ARE INCHES DIMENSIONS IN [] ARE MILLIMETERS

TOLERANCES:
 X = ±.2 [.5] FRACTIONS
 .XX = ±.02 [.5] ± .032
 .XXX = ±.005 [.13] ANGLES ± 1°
 CABLE LENGTH TOLERANCES:
 ≤12 [305] = +1 [25] / -0
 >12 [305] ≤ 60 [1524] = +2 [51] / -0
 >60 [1524] ≤ 120 [3048] = +4 [102] / -0
 >120 [3048] ≤ 300 [7620] = +6 [182] / -0
 >300 [7620] = +5% / -0

ALL DIMENSIONS ARE FOR REFERENCE ONLY AND SUBJECT TO CHANGE WITHOUT NOTICE.

THE INFORMATION CONTAINED IN THIS DRAWING IS THE SOLE PROPERTY OF INFINITE ELECTRONICS, INC. ANY REPRODUCTION IN PART OR WHOLE WITHOUT THE WRITTEN PERMISSION OF INFINITE ELECTRONICS, INC. IS PROHIBITED. THESE COMMODITIES, TECHNOLOGY OR SOFTWARE WERE EXPORTED FROM THE UNITED STATES IN ACCORDANCE WITH THE EXPORT ADMINISTRATION REGULATIONS. DIVERSION CONTRARY TO U.S. LAW PROHIBITED.