



BenchPro Chairs



Presented by: Xano Wang
Sales Director
BenchPro - Los Angeles Marketing Office
+1-626-321-8219
xano@benchpro.com
www.benchdepot.com

It all looks the same, **Why BenchPro?**



BenchPro™

Bevco

BioFit

Global

Pass ANSI/BIFMA, ESDA, DIN, CE, TUV



BenchPro™

Bevco

BioFit

Global

Note: Notice the foam thickness

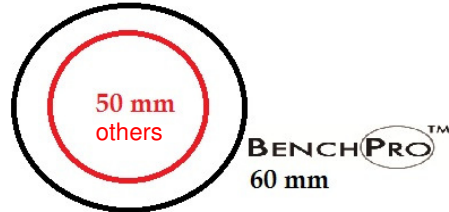
**Built-in Lumbar support and
3 layer high resilient foam w/ memory foam**



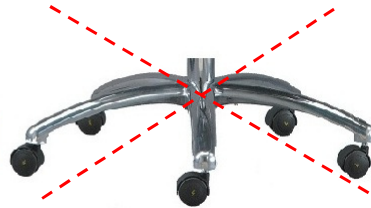
Multi Layer Foam:

- 1st layer : Memory Foam
- 2nd layer : Med-Density Foam
- 3rd layer : High-Density Foam

Bigger Caster & base



1. **BenchPro™** heavy duty chair uses 60 mm diameter caster, 20% larger than most competitors, with protective chrome frame.



2. Unlike any other aluminum base, **BenchPro™** aluminum base design comes with non skid foot pads protective nylon to withstand dirt debris.

Selective Raw Material



1. Cleanroom PolyUrethane:

BenchPro™ urethane chair are made the same way modern car dashboards are made. They wear very well, are puncture and tear resistant, take no maintenance, and rarely need cleaning. They support excellent posture as they are firmer than upholstered chairs.



2. **Fabric :**

BenchPro™ Fabric use 250,000 double rub fabrics with Teflon finish while Bevco use 30,000 double rub resistant fabric.

3. **3 lever control :**

BenchPro™ uses heavy welding on chair structure and control which enable 450 lb weight capacity with independent seat tilt, back tilt, seat height, back height and tilt pressure adjustment.

ESD Frame Connector

BENCHPRO™



BenchPro™ uses Grade 304 Stainless Steel strip as back frame ground connector while many of our competitor doesn't.

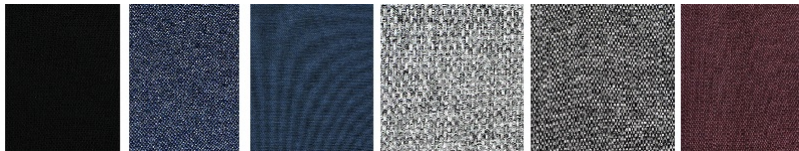
Aluminum Sheet on the bottom

5b. BenchPro™ uses aluminum sheet underseat to ensure static free seating

5c. Rubber edging on seat and back part of the chair



3 days lead time with various color selection



5 minute no-tool assembly process,



10 year unconditional warranty

We'll ship a new seat if our foam gets thinner or fabric starts tearing apart.

No hassle process, no paperwork required, no form to be filled, no need invoice copy, no need to return the product. We only ask for photo evidence.