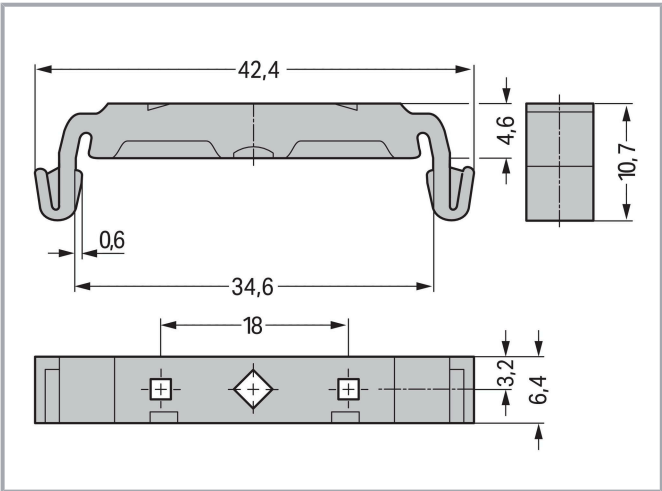


Data sheet | Item number: 209-120

Mounting foot; can be snapped on terminal blocks with snap-in mounting foot; for mounting on relay-modules; 6.4 mm wide; gray

www.wago.com/209-120



Data

Technical data

Main product function	Mounting accessories
Mounting type	DIN-35 rail

Physical data

Width	6.4 mm / 0.252 inches
Height	42.3 mm / 1.665 inches
Depth	10.8 mm / 0.425 inches

Mechanical data

Suitable	for male and female connectors with snap-in mounting feet (for panel mounting)
----------	--

Material data

Color	gray
Material group	I
Insulation material	Polyamide (PA66)
Flammability class per UL94	V0

Subject to changes. Please also observe the further product documentation!

WAGO GmbH & Co. KG
Hansastr. 27
32423 Minden
Phone: +49571 887-0 | Fax: +49571 887-169
Email: info.de@wago.com | Web: www.wago.com

Do you have any questions about our products?
We are always happy to take your call at +49 (571) 887-44222.



Fire load	0.036 MJ
Weight	1.2 g

Commercial data

Product Group	2 (Terminal Block Accessories)
eCl@ss 10.0	27-14-11-92
eCl@ss 9.0	27-14-11-92
ETIM 8.0	EC002848
ETIM 7.0	EC002848
ECCN	NO DATA
PU (SPU)	500 (25) pcs
Packaging type	box
Country of origin	CH
GTIN	4017332272421
Customs tariff number	39269097900

Environmental Product Compliance

RoHS Compliance Status	Compliant, No Exemption
------------------------	-------------------------

Optional accessories

Mounting

Mounting accessories



Item no.: 209-119

Fixing screw; for 209-120 mounting carrier

www.wago.com/209-119

Downloads

Documentation

Bid Text

209-120 X81 - Datei	2019 年2月19 日	xml 2.6 kB	Download
209-120 doc - Datei	2017 年8月18 日	doc 23.0 kB	Download

Subject to changes. Please also observe the further product documentation!

WAGO GmbH & Co. KG
Hansastr. 27
32423 Minden
Phone: +49571 887-0 | Fax: +49571 887-169
Email: info.de@wago.com | Web: www.wago.com

Do you have any questions about our products?
We are always happy to take your call at +49 (571) 887-44222.



CAD/CAE-Data

CAD data

2D/3D Models 209-120	URL	Download
----------------------	-----	----------

CAE data

EPLAN Data Portal 209-120	URL	Download
WSCAD Universe 209-120	URL	Download
ZUKEN Portal 209-120	URL	Download

Asset Administration Shell

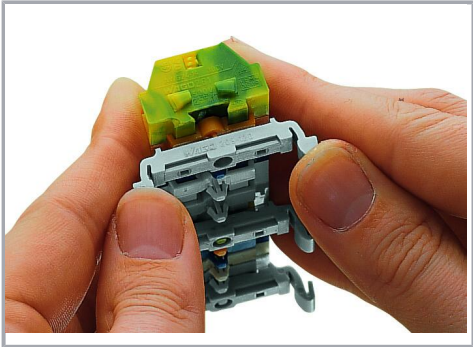
Asset Administration Shell 209-120	URL	Download
------------------------------------	-----	----------

Environmental Product Compliance

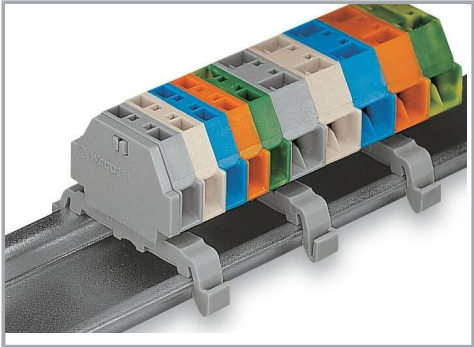
Compliance Search

Environmental Product Compliance 209-120	URL	Download
Mounting foot; can be snapped on terminal blocks with snap-in mounting foot; for mounting on relay-modules; 6.4 mm wide; gray		

Installation Notes



Terminal strip with snap-in mounting feet
Snapping a mounting foot (209-120).
(Distance between mounting feet: approx. 25 ... 30 mm)



Terminal strip; with snap-in mounting feet; for DIN-35 rail

Subject to changes. Please also observe the further product documentation!