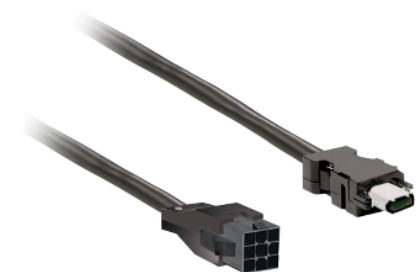


Product data sheet

Characteristics

VW3M5D1FR30

power cable 3m shielded 4x 0,82mm², BCH2
brake leads connection



Main

Range of Product	Lexium 28
Product or Component Type	Power cable
Accessory / separate part type	Preassembled power cordset
Accessory / separate part category	Connection accessory
Product compatibility	Servo motor BCH2 50 W 1.57 in (40 mm)) with brake][RETURN]Servo motor BCH2 100 W 1.57 in (40 mm)) with brake][RETURN]Servo motor BCH2 200 W 2.36 in (60 mm)) with brake][RETURN]Servo motor BCH2 400 W 2.36 in (60 mm)) with brake) [RETURN]Servo motor BCH2 400 W 3.15 in (80 mm)) with brake][RETURN]Servo motor BCH2 750 W 3.15 in (80 mm)) with brake)
Accessory / separate part destination	Between servo motor and servo drive
Range Compatibility	Lexium 28
Cable length	9.84 ft (3 m)

Complementary

Electrical connection	Free end servo drive side Connector - Molex 6-pin servo motor side
AWG gauge	6 x AWG 18
Net Weight	0.66 lb(US) (0.3 kg)

Ordering and shipping details

Category	US1PC5118264
Discount Schedule	PC51
GTIN	3606480735677
Returnability	No
Country of origin	TN

Packing Units

Unit Type of Package 1	PCE
Number of Units in Package 1	1
Package 1 Height	1.81 in (4.600 cm)
Package 1 Width	11.30 in (28.700 cm)
Package 1 Length	12.48 in (31.700 cm)
Package 1 Weight	17.95 oz (509.000 g)
Unit Type of Package 2	S03
Number of Units in Package 2	10
Package 2 Height	11.81 in (30.000 cm)
Package 2 Width	11.81 in (30.000 cm)
Package 2 Length	15.75 in (40.000 cm)
Package 2 Weight	12.26 lb(US) (5.560 kg)

The information provided in this documentation contains general descriptions and/or technical characteristics of the performance of the products contained herein. This documentation is not intended as a substitute for and is not to be used for determining suitability or reliability of these products for specific user applications. It is the duty of any such user or integrator to perform the appropriate and complete risk analysis, evaluation and testing of the products with respect to the relevant specific application or use thereof. Neither Schneider Electric Industries SAS nor any of its affiliates or subsidiaries shall be responsible or liable for misuse of the information contained herein.

Offer Sustainability

California proposition 65	WARNING: This product can expose you to chemicals including: Lead and lead compounds, which is known to the State of California to cause cancer and birth defects or other reproductive harm. For more information go to www.P65Warnings.ca.gov
REACH Regulation	REACH Declaration
REACH free of SVHC	Yes
EU RoHS Directive	Pro-active compliance (Product out of EU RoHS legal scope) EU RoHS Declaration
Toxic heavy metal free	Yes
Mercury free	Yes
China RoHS Regulation	China RoHS Declaration
RoHS exemption information	Yes
PVC free	Yes