



Main

Range of Product	Altivar
Product or Component Type	EMC input filter
Range Compatibility	Altivar Machine ATV340 Altivar&Nbsp;Process ATV600 Altivar Process ATV900
Product compatibility	Variable speed drive ATV630 wall mount, 37 kW, 380...480 V Variable speed drive ATV630 wall mount, 45 kW, 380...480 V Variable speed drive ATV630 wall mount, 18.5 kW, 200...240 V Variable speed drive ATV630 wall mount, 22 kW, 200...240 V Variable speed drive ATV650 wall mount, 37 kW, 380...480 V Variable speed drive ATV650 wall mount, 45 kW, 380...480 V Variable speed drive ATV930 wall mount, 37 kW, 380...480 V Variable speed drive ATV930 wall mount, 45 kW, 380...480 V Variable speed drive ATV930 wall mount, 18.5 kW, 200...240 V Variable speed drive ATV930 wall mount, 22 kW, 200...240 V Variable speed drive ATV950 wall mount, 37 kW, 380...480 V Variable speed drive ATV950 wall mount, 45 kW, 380...480 V Variable speed drive ATV34030 kW, 380...480 V Variable speed drive ATV34037 kW, 380...480 V
Product Specific Application	Radio interference input filter
Mounting Location	At variable speed drive side
Line Rated Current	100 A
Thermal losses	12.4 W
Phase	Three phase

Complementary

Electrical connection	Terminal 50 mm ² AWG 1/0
Maximum motor cable length	492.13 Ft (150 m) shielded motor cable 4 kHz EN/IEC 61800-3 category C2, 380...480 V 984.25 Ft (300 m) shielded motor cable 4 kHz EN/IEC 61800-3 category C3, 380...480 V 492.13 Ft (150 m) shielded motor cable 4 kHz EN/IEC 61800-3 category C2, 200...240 V 984.25 Ft (300 m) shielded motor cable 4 kHz EN/IEC 61800-3 category C3, 200...240 V 164.04 Ft (50 m) shielded motor cable 4 kHz EN/IEC 61800-3 category C1, 200...240 V 164.04 ft (50 m) shielded motor cable 4 kHz EN/IEC 61800-3 category C1, 380...480 V
Maximum earth leakage current	13.9 MA 400 V 50 Hz TN 13.9 mA 400 V 50 Hz TT
Power supply voltage	380...480 V 200...240 V
Tolerance	10 %
Mechanical robustness	Shocks class 3M4 IEC 60721-3-3 Vibrations class 3M4 IEC 60721-3-3

The information provided in this documentation contains general descriptions and/or technical characteristics of the performance of the products contained herein. This documentation is not intended as a substitute for and is not to be used for determining suitability or reliability of these products for specific user applications. It is the duty of any such user or integrator to perform the appropriate and complete risk analysis, evaluation and testing of the products with respect to the relevant specific application or use thereof. Neither Schneider Electric Industries SAS nor any of its affiliates or subsidiaries shall be responsible or liable for misuse of the information contained herein.

Width	4.72 in (120 mm)
Height	13.39 in (340 mm)
Depth	7.09 in (180 mm)
Net Weight	14.33 lb(US) (6.5 kg)

Environment

IP degree of protection	IP20mounting side by side IP21with kit VW3A47906
Relative humidity	5...95 % without condensation IEC 61800-5-1
Ambient air temperature for operation	14...122 °F (-10...50 °C) without current derating 122...140 °F (50...60 °C) with current derating 1.5 % per °C)
Ambient Air Temperature for Storage	-40...158 °F (-40...70 °C)
Operating altitude	0...3280.84 ft (0...1000 m) without current derating 3280.84...13123.36 ft (1000...4000 m) with current derating 1 % per 100 m
Standards	EN/IEC 61800-3





Ordering and shipping details

Category	22000-Temporary Category for ITS Price Promotion
Discount Schedule	I
GTIN	3606480736551
Nbr. of units in pkg.	1
Package weight(Lbs)	22.45 lb(US) (10.184 kg)
Returnability	No
Country of origin	CN

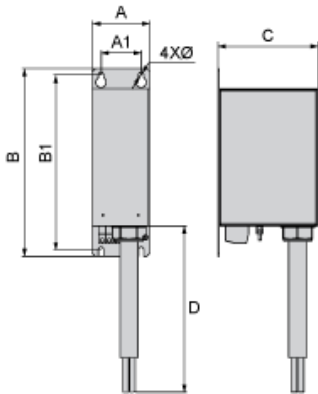
Packing Units

Unit Type of Package 1	PCE
Package 1 Height	11.22 in (28.5 cm)
Package 1 width	14.76 in (37.5 cm)
Package 1 Length	20.87 in (53 cm)
Unit Type of Package 2	P06
Number of Units in Package 2	4
Package 2 Weight	128.41 lb(US) (58.248 kg)
Package 2 Height	30.31 in (77 cm)
Package 2 width	23.62 in (60 cm)
Package 2 Length	31.50 in (80 cm)

Offer Sustainability

California proposition 65	WARNING: This product can expose you to chemicals including: Lead and lead compounds, which is known to the State of California to cause cancer and birth defects or other reproductive harm. For more information go to www.P65Warnings.ca.gov
REACH Regulation	 REACH Declaration
REACH free of SVHC	Yes
EU RoHS Directive	Pro-active compliance (Product out of EU RoHS legal scope)  EU RoHS Declaration
Toxic heavy metal free	Yes
Mercury free	Yes
RoHS exemption information	 Yes
China RoHS Regulation	 China RoHS Declaration

Dimensions



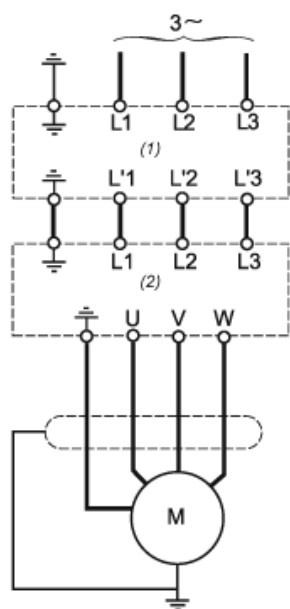
Dimensions in mm

A	B	C	D	A1	B1	Ø
120	340	180	1300	80	322	7

Dimensions in in.

A	B	C	D	A1	B1	Ø
4.7	13.4	7.1	51.2	3.1	12.7	0.28

Recommended Schema



- (1) Filter
- (2) Drive