

PTFIX-NS15A-FIX - DIN rail adapter

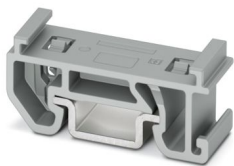


3274059

<https://www.phoenixcontact.com/us/products/3274059>

Please be informed that the data shown in this PDF document is generated from our online catalog. Please find the complete data in the user documentation. Our general terms of use for downloads are valid.

DIN rail adapter, with end stop function, depth: 10.8 mm, width: 10.3 mm, height: 28.6 mm, color: gray, mounting type: NS 15



Commercial data

Item number	3274059
Packing unit	20 pc
Minimum order quantity	20 pc
Sales key	BE09
Product key	BEAZ11
Catalog page	Page 438 (C-1-2019)
GTIN	4055626394145
Weight per piece (including packing)	1.23 g
Weight per piece (excluding packing)	1.2 g
Customs tariff number	39269097
Country of origin	PL

PTFIX-NS15A-FIX - DIN rail adapter



3274059

<https://www.phoenixcontact.com/us/products/3274059>

Technical data

Product properties

Product type	Mounting material
--------------	-------------------

Dimensions

Width	10.3 mm
Height	28.6 mm
Depth	10.8 mm
Depth on NS 15	13.7 mm

Material specifications

Color	gray
Flammability rating according to UL 94	V0

Environmental and real-life conditions

Ambient conditions

Ambient temperature (operation)	-60 °C ... 105 °C (max. short-term operating temperature RTI Elec.)
Ambient temperature (storage/transport)	-25 °C ... 60 °C (for a short time, not exceeding 24 h, -60 °C to +70 °C)
Ambient temperature (assembly)	-5 °C ... 70 °C
Ambient temperature (actuation)	-5 °C ... 70 °C
Permissible humidity (storage/transport)	30 % ... 70 %

Mounting

Mounting type	NS 15
---------------	-------

PTFIX-NS15A-FIX - DIN rail adapter



3274059

<https://www.phoenixcontact.com/us/products/3274059>

Approvals

To download certificates, visit the product detail page: <https://www.phoenixcontact.com/us/products/3274059>



LR

Approval ID: LR2002627TA

PTFIX-NS15A-FIX - DIN rail adapter



3274059

<https://www.phoenixcontact.com/us/products/3274059>

Classifications

ECLASS

ECLASS-11.0	27370419
ECLASS-12.0	27370419
ECLASS-13.0	27370419

ETIM

ETIM 9.0	EC001024
----------	----------

UNSPSC

UNSPSC 21.0	39121400
-------------	----------

PTFIX-NS15A-FIX - DIN rail adapter



3274059

<https://www.phoenixcontact.com/us/products/3274059>

Environmental product compliance

EU RoHS	
Fulfills EU RoHS substance requirements	Yes, No exemptions
China RoHS	
Environment friendly use period (EFUP)	EFUP-E
	No hazardous substances above the limits
EU REACH SVHC	
REACH candidate substance (CAS No.)	No substance above 0.1 wt%

Phoenix Contact 2024 © - all rights reserved
<https://www.phoenixcontact.com>

Phoenix Contact USA
586 Fulling Mill Road
Middletown, PA 17057, United States
(+717) 944-1300
info@phoenixcon.com