

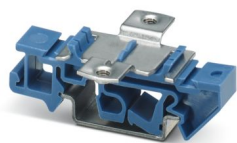
MCR-DIN-RAIL-ADAPTER HT - Adapter



2864671
<https://www.phoenixcontact.com/us/products/2864671>

Please be informed that the data shown in this PDF document is generated from our online catalog. Please find the complete data in the user documentation. Our general terms of use for downloads are valid.

DIN rail adapter for head-mounted transducers. Suitable for 35 mm DIN rails in accordance with EN 60715.



Commercial data

Item number	2864671
Packing unit	1 pc
Minimum order quantity	1 pc
Sales key	C401
Product key	CK132Z
Catalog page	Page 192 (C-5-2019)
GTIN	4046356046503
Weight per piece (including packing)	14.5 g
Weight per piece (excluding packing)	13 g
Customs tariff number	39269097
Country of origin	DE

MCR-DIN-RAIL-ADAPTER HT - Adapter



2864671

<https://www.phoenixcontact.com/us/products/2864671>

Technical data

Product properties

Product type	Mounting rail adapter
--------------	-----------------------

Mounting

Mounting type	DIN rail mounting
---------------	-------------------

MCR-DIN-RAIL-ADAPTER HT - Adapter



2864671

<https://www.phoenixcontact.com/us/products/2864671>

Classifications

ECLASS

ECLASS-11.0	27371392
ECLASS-12.0	27371392
ECLASS-13.0	27371392

ETIM

ETIM 9.0	EC002498
----------	----------

UNSPSC

UNSPSC 21.0	39121100
-------------	----------

MCR-DIN-RAIL-ADAPTER HT - Adapter



2864671

<https://www.phoenixcontact.com/us/products/2864671>

Environmental product compliance

China RoHS	
Environment friendly use period (EFUP)	EFUP-E
	No hazardous substances above the limits
EU REACH SVHC	
REACH candidate substance (CAS No.)	No substance above 0.1 wt%

MCR-DIN-RAIL-ADAPTER HT - Adapter



2864671

<https://www.phoenixcontact.com/us/products/2864671>

Mandatory accessories

MCR-DIN-RAIL-ADAPTER HT - Adapter

2864671

<https://www.phoenixcontact.com/us/products/2864671>

DIN rail adapter for head-mounted transducers. Suitable for 35 mm DIN rails in accordance with EN 60715.



FA MCR-HT-TS-I-OLP - Head-mounted transducer

1105515

<https://www.phoenixcontact.com/us/products/1105515>



Output loop-powered head transmitter for transmitting up to 2 sensor signals from RTD and TC sensors as well as from resistance and voltage sensors via 4 mA ... 20 mA. HART, Standard configuration, Safety Integrity Level (SIL, IEC 61508): 2, Systematic Capability: 3, Screw connection

MCR-DIN-RAIL-ADAPTER HT - Adapter



2864671

<https://www.phoenixcontact.com/us/products/2864671>

FA MCR-EX-HT-TS-I-OLP - Head-mounted transducer

1105681

<https://www.phoenixcontact.com/us/products/1105681>



Ex i-Output loop-powered head transmitter for transmitting up to 2 sensor signals from RTD and TC sensors as well as from resistance and voltage sensors via 4 mA ... 20 mA. HART, Standard configuration, Safety Integrity Level (SIL, IEC 61508): 2, Systematic Capability: 3, Screw connection

FA MCR-HT-1TS-I-OLP - Head-mounted transducer

1145210

<https://www.phoenixcontact.com/us/products/1145210>



Output loop-powered head transmitter for transmitting RTD and TC sensor signals, as well as from resistance and voltage sensors via 4 mA ... 20 mA. HART, Standard configuration, Screw connection

MCR-DIN-RAIL-ADAPTER HT - Adapter

2864671

<https://www.phoenixcontact.com/us/products/2864671>



FA MCR-EX-HT-1TS-I-OLP - Head-mounted transducer

1145217

<https://www.phoenixcontact.com/us/products/1145217>



Ex i-Output loop-powered head transmitter for transmitting RTD and TC sensor signals, as well as from resistance and voltage sensors via 4 mA ... 20 mA. HART, Standard configuration, Screw connection

Phoenix Contact 2024 © - all rights reserved

<https://www.phoenixcontact.com>

Phoenix Contact USA
586 Fulling Mill Road
Middletown, PA 17057, United States
(+717) 944-1300
info@phoenixcon.com