

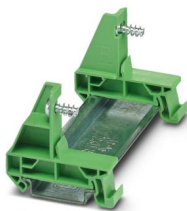
DR 35-PC 35 - DIN rail adapter

1708409

<https://www.phoenixcontact.com/us/products/1708409>



Please be informed that the data shown in this PDF document is generated from our online catalog. Please find the complete data in the user documentation. Our general terms of use for downloads are valid.



DIN rail adapter, for snapping the PC 35/IPC 35 connector onto a DIN rail, color: green, mounting type: NS 35/7,5, NS 35/15

Commercial data

Item number	1708409
Packing unit	10 pc
Minimum order quantity	10 pc
Sales key	AA05
Product key	AAEMBA
GTIN	4046356998291
Weight per piece (including packing)	19.54 g
Weight per piece (excluding packing)	17.55 g
Customs tariff number	85389099
Country of origin	CN

DR 35-PC 35 - DIN rail adapter

1708409

<https://www.phoenixcontact.com/us/products/1708409>



Technical data

Product properties

Product type	Mounting material
Product family	DR 35-PC
Number of positions	1
Pitch	15 mm

Dimensions

Pitch	15 mm
-------	-------

Material specifications

Color (Housing)	green (RAL 6021)
Flammability rating according to UL 94	V0

DR 35-PC 35 - DIN rail adapter



1708409

<https://www.phoenixcontact.com/us/products/1708409>

Classifications

ECLASS

ECLASS-11.0	27460405
ECLASS-12.0	27460405
ECLASS-13.0	27460405

ETIM

ETIM 9.0	EC002943
----------	----------

UNSPSC

UNSPSC 21.0	39121400
-------------	----------

DR 35-PC 35 - DIN rail adapter

1708409

<https://www.phoenixcontact.com/us/products/1708409>



Environmental product compliance

EU RoHS	
Fulfills EU RoHS substance requirements	Yes, No exemptions
China RoHS	
Environment friendly use period (EFUP)	EFUP-E
	No hazardous substances above the limits
EU REACH SVHC	
REACH candidate substance (CAS No.)	No substance above 0.1 wt%

DR 35-PC 35 - DIN rail adapter



1708409

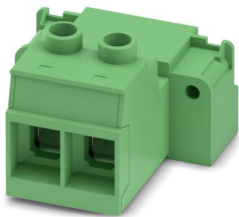
<https://www.phoenixcontact.com/us/products/1708409>

Accessories

IPC 35 HC/ 2-STGF-15,00 - PCB connector

1784855

<https://www.phoenixcontact.com/us/products/1784855>

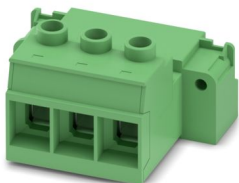


PCB connector, nominal cross section: 35 mm², color: green, nominal current: 125 A, rated voltage (III/2): 1000 V, contact surface: Silver, contact connection type: Pin, number of potentials: 2, number of rows: 1, number of positions: 2, number of connections: 2, product range: IPC 35 HC/...-STGF, pitch: 15 mm, connection method: Screw connection with tension sleeve, screw head form: L Slotted, conductor/PCB connection direction: 0 °, locking clip: - without locking clip, plug-in system: COMBICON PC 35, locking: Screw locking mechanism, mounting: Threaded flange, type of packaging: packed in cardboard

IPC 35 HC/ 3-STGF-15,00 - PCB connector

1784868

<https://www.phoenixcontact.com/us/products/1784868>



PCB connector, nominal cross section: 35 mm², color: green, nominal current: 125 A, rated voltage (III/2): 1000 V, contact surface: Silver, contact connection type: Pin, number of potentials: 3, number of rows: 1, number of positions: 3, number of connections: 3, product range: IPC 35 HC/...-STGF, pitch: 15 mm, connection method: Screw connection with tension sleeve, screw head form: L Slotted, conductor/PCB connection direction: 0 °, locking clip: - without locking clip, plug-in system: COMBICON PC 35, locking: Screw locking mechanism, mounting: Threaded flange, type of packaging: packed in cardboard

DR 35-PC 35 - DIN rail adapter



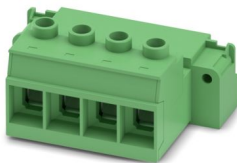
1708409

<https://www.phoenixcontact.com/us/products/1708409>

IPC 35 HC/ 4-STGF-15,00 - PCB connector

1784871

<https://www.phoenixcontact.com/us/products/1784871>

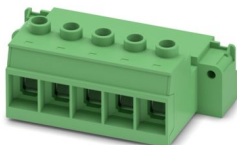


PCB connector, nominal cross section: 35 mm², color: green, nominal current: 125 A, rated voltage (III/2): 1000 V, contact surface: Silver, contact connection type: Pin, number of potentials: 4, number of rows: 1, number of positions: 4, number of connections: 4, product range: IPC 35 HC/...-STGF, pitch: 15 mm, connection method: Screw connection with tension sleeve, screw head form: L Slotted, conductor/PCB connection direction: 0 °, locking clip: - without locking clip, plug-in system: COMBICON PC 35, locking: Screw locking mechanism, mounting: Threaded flange, type of packaging: packed in cardboard

IPC 35 HC/ 5-STGF-15,00 - PCB connector

1784884

<https://www.phoenixcontact.com/us/products/1784884>



PCB connector, nominal cross section: 35 mm², color: green, nominal current: 125 A, rated voltage (III/2): 1000 V, contact surface: Silver, contact connection type: Pin, number of potentials: 5, number of rows: 1, number of positions: 5, number of connections: 5, product range: IPC 35 HC/...-STGF, pitch: 15 mm, connection method: Screw connection with tension sleeve, screw head form: L Slotted, conductor/PCB connection direction: 0 °, locking clip: - without locking clip, plug-in system: COMBICON PC 35, locking: Screw locking mechanism, mounting: Threaded flange, type of packaging: packed in cardboard

DR 35-PC 35 - DIN rail adapter

1708409

<https://www.phoenixcontact.com/us/products/1708409>



IPC 35 HC/ 6-STGF-15,00 - PCB connector

1784897

<https://www.phoenixcontact.com/us/products/1784897>



PCB connector, nominal cross section: 35 mm², color: green, nominal current: 125 A, rated voltage (III/2): 1000 V, contact surface: Silver, contact connection type: Pin, number of potentials: 6, number of rows: 1, number of positions: 6, number of connections: 6, product range: IPC 35 HC/...-STGF, pitch: 15 mm, connection method: Screw connection with tension sleeve, screw head form: L Slotted, conductor/PCB connection direction: 0 °, locking clip: - without locking clip, plug-in system: COMBICON PC 35, locking: Screw locking mechanism, mounting: Threaded flange, type of packaging: packed in cardboard

Phoenix Contact 2024 © - all rights reserved

<https://www.phoenixcontact.com>

Phoenix Contact USA
586 Fulling Mill Road
Middletown, PA 17057, United States
(+717) 944-1300
info@phoenixcon.com