

# PLC-FA-I-5X20-120-230UC - Fuse adapter



1186508

<https://www.phoenixcontact.com/us/products/1186508>

Please be informed that the data shown in this PDF document is generated from our online catalog. Please find the complete data in the user documentation. Our general terms of use for downloads are valid.



Safety plug adapter for use on a 6.2 mm PLC basic terminal block. For 5 x 20 mm fuses. Operating voltage: 120 ... 230 V AC/DC. With LED for fuse failure indication.

## Commercial data

Item number	1186508
Packing unit	10 pc
Minimum order quantity	10 pc
Sales key	C461
Product key	CK62Z4
GTIN	4063151228309
Weight per piece (including packing)	12.43 g
Weight per piece (excluding packing)	12 g
Customs tariff number	85366990
Country of origin	CN

## Technical data

### Notes

Notes on operation	If the fuse is defective, the downstream circuit is not off load. Current consumption when fuse is defective.
--------------------	--

### Product properties

Product type	Adapter
Product family	PLC-INTERFACE
Application	Adapter

### Insulation characteristics

Insulation	Safe isolation, reinforced insulation
------------	---------------------------------------

### Insulation characteristics: Air clearances and creepage distances in a circuit

Insulation	Safe isolation, reinforced insulation
Overvoltage category	III
Pollution degree	2

### Electrical properties

Fuse	G / 5 x 20
------	------------

### Air clearances and creepage distances in a circuit

Rated insulation voltage	250 V AC
Rated surge voltage	6 kV

### Supply

Current consumption	0.4 mA ... 1.3 mA (LED display)
---------------------	---------------------------------

### Dimensions

Width	6.2 mm
Height	80 mm
Depth	130 mm

### Environmental and real-life conditions

#### Ambient conditions

Degree of protection	IP20
Degree of protection (Installation location)	IP54 (Installation location)
Ambient temperature (operation)	-40 °C ... 85 °C (observe derating)
Ambient temperature (storage/transport)	-40 °C ... 85 °C
Altitude	≤ 2000 m

### Standards and regulations

#### Air clearances and creepage distances in a circuit

Standards/regulations	DIN EN 50178
-----------------------	--------------

# PLC-FA-I-5X20-120-230UC - Fuse adapter



1186508

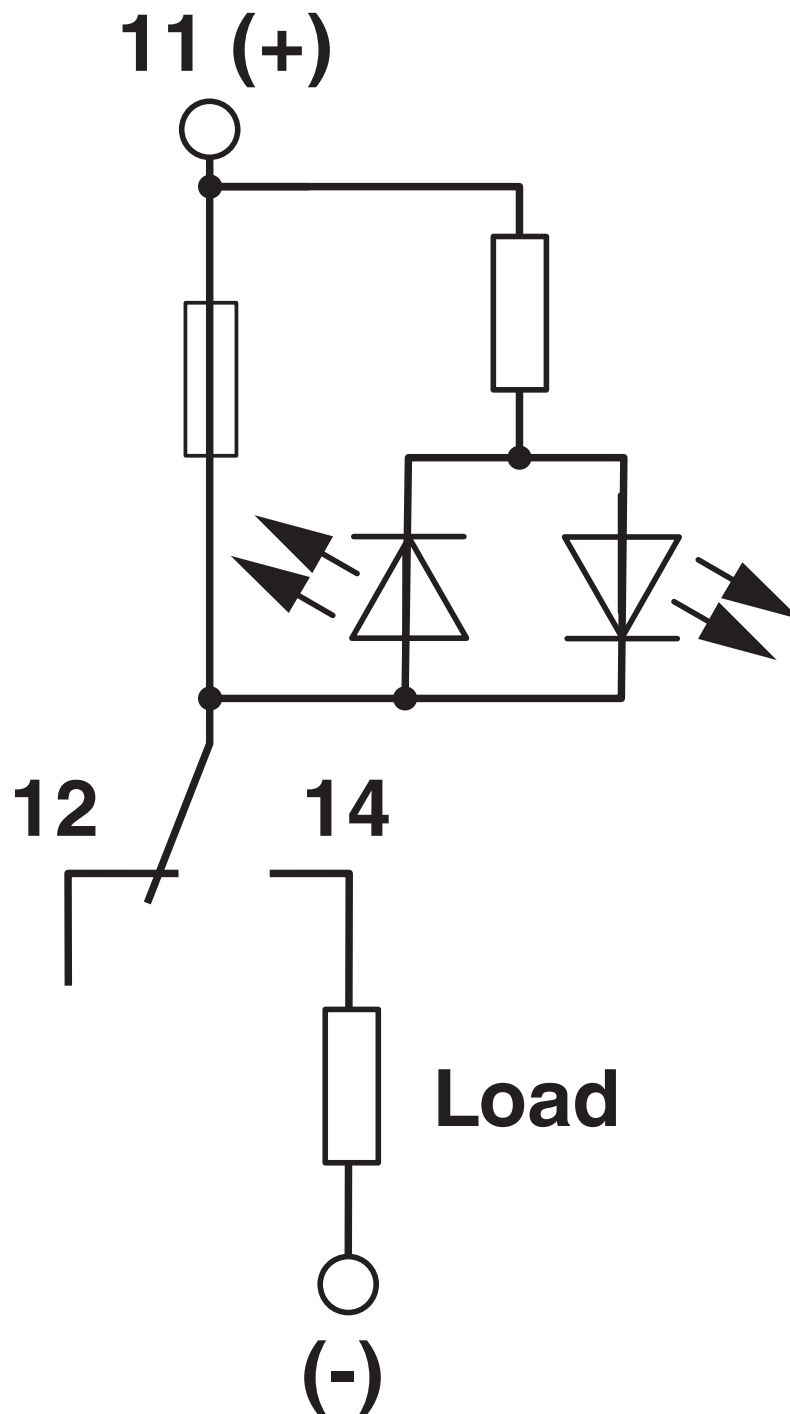
<https://www.phoenixcontact.com/us/products/1186508>

## Mounting

Mounting position	any
-------------------	-----

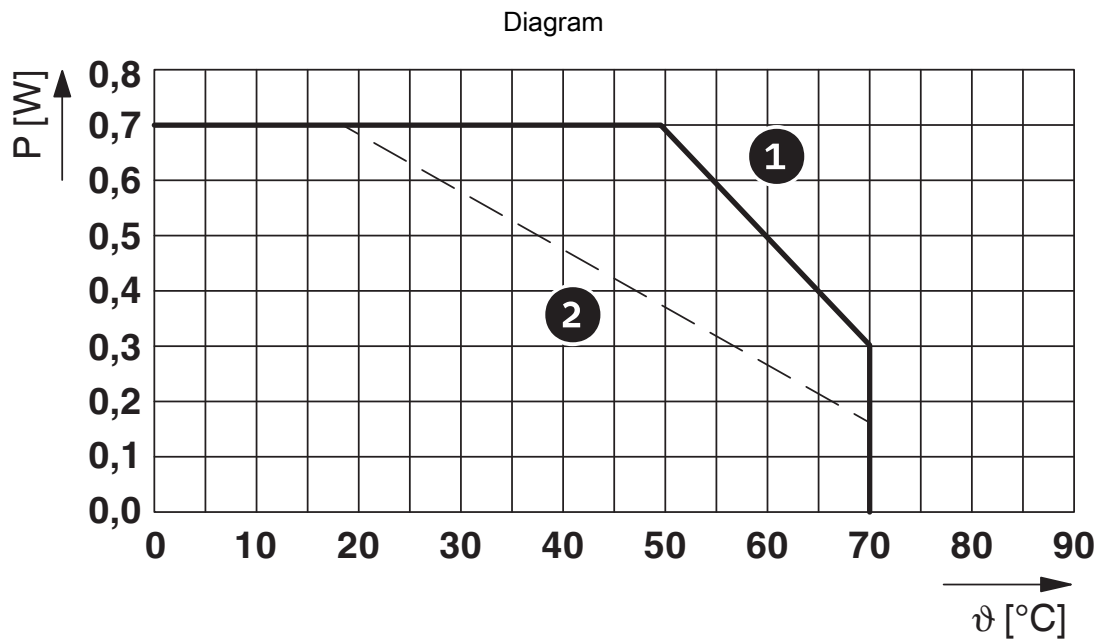
Drawings

Circuit diagram



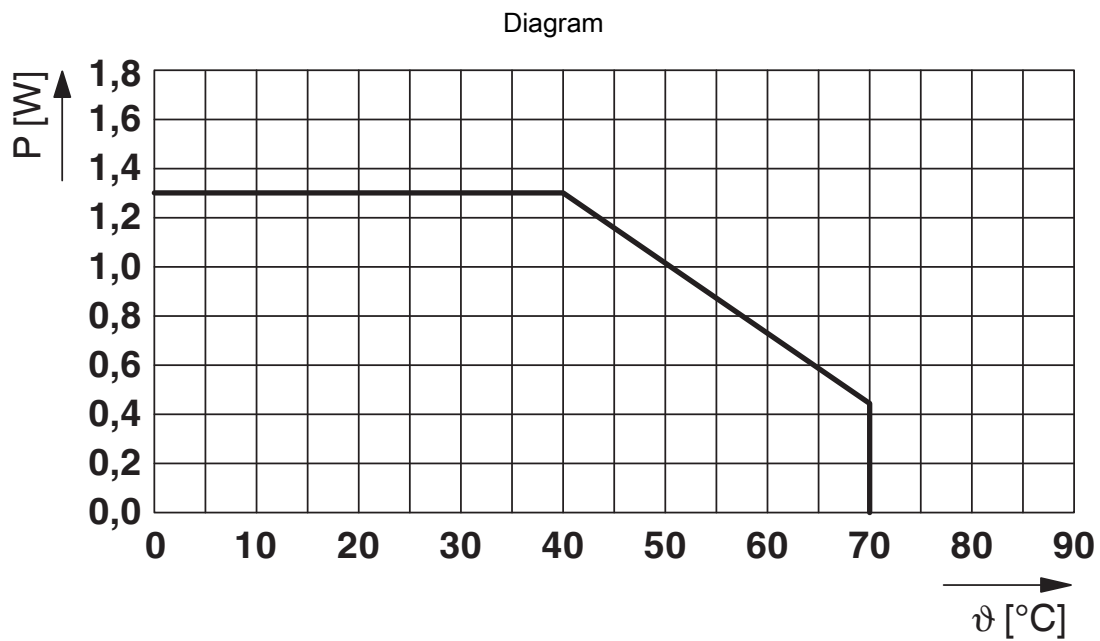
1186508

<https://www.phoenixcontact.com/us/products/1186508>



Derating: Short-circuit protection only: Nominal value 6.3 A / 0.7 W

- (1) Separate arrangement
- (2) Compound arrangement



Derating: Overload and short-circuit protection: Nominal value 6.3 A / 1.6 W

# PLC-FA-I-5X20-120-230UC - Fuse adapter



1186508

<https://www.phoenixcontact.com/us/products/1186508>

## Approvals

To download certificates, visit the product detail page: <https://www.phoenixcontact.com/us/products/1186508>



**cULus Listed**

Approval ID: E140324



**cULus Listed**

Approval ID: E199827

# PLC-FA-I-5X20-120-230UC - Fuse adapter



1186508

<https://www.phoenixcontact.com/us/products/1186508>

## Classifications

### ECLASS

ECLASS-11.0	27371392
ECLASS-12.0	27371392
ECLASS-13.0	27371392

### ETIM

ETIM 8.0	EC002498
----------	----------

### UNSPSC

UNSPSC 21.0	39121100
-------------	----------

# PLC-FA-I-5X20-120-230UC - Fuse adapter



1186508

<https://www.phoenixcontact.com/us/products/1186508>

## Environmental product compliance

### EU RoHS

Fulfills EU RoHS substance requirements	Yes, No exemptions
---	--------------------

### EU REACH SVHC

REACH candidate substance (CAS No.)	No substance above 0.1 wt%
-------------------------------------	----------------------------



# PLC-FA-I-5X20-120-230UC - Fuse adapter



1186508

<https://www.phoenixcontact.com/us/products/1186508>

## Mandatory accessories

### PLC-BPT- 24DC/21RW - Relay base

2900261

<https://www.phoenixcontact.com/us/products/2900261>



6.2 mm PLC basic terminal block for railway applications with Push-in connection, without relay or solid-state relay, range from  $0.7 \times U_N$  to  $1.25 \times U_N$ , temperature range from  $-25^\circ\text{C}$  to  $+70^\circ\text{C}$ , 1 changeover contact, input voltage 24 V DC

---

### PLC-BPT-120UC/21 - Relay base

2900280

<https://www.phoenixcontact.com/us/products/2900280>



6.2 mm PLC basic terminal block with Push-in connection, without relay or solid-state relay, for mounting on DIN rail NS 35/7,5, 1 changeover contact, input voltage 120 V AC/DC

# PLC-FA-I-5X20-120-230UC - Fuse adapter

1186508

<https://www.phoenixcontact.com/us/products/1186508>



## PLC-BPT-230UC/21 - Relay base

2900281

<https://www.phoenixcontact.com/us/products/2900281>



6.2 mm PLC basic terminal block with Push-in connection, without relay or solid-state relay, for mounting on DIN rail NS 35/7,5, 1 changeover contact, input voltage 230 V AC/DC

---

## PLC-BPT- 5DC/21 - Relay base

2900443

<https://www.phoenixcontact.com/us/products/2900443>



6.2 mm PLC basic terminal block with Push-in connection, without relay or solid-state relay, for mounting on DIN rail NS 35/7,5, 1 changeover contact, input voltage 5 V DC

# PLC-FA-I-5X20-120-230UC - Fuse adapter

1186508

<https://www.phoenixcontact.com/us/products/1186508>



## PLC-BPT- 24DC/21 - Relay base

2900445

<https://www.phoenixcontact.com/us/products/2900445>



6.2 mm PLC basic terminal block with Push-in connection, without relay or solid-state relay, for mounting on DIN rail NS 35/7,5, 1 changeover contact, input voltage 24 V DC

---

## PLC-BPT- 24UC/21 - Relay base

2900446

<https://www.phoenixcontact.com/us/products/2900446>



6.2 mm PLC basic terminal block with Push-in connection, without relay or solid-state relay, for mounting on DIN rail NS 35/7,5, 1 changeover contact, input voltage 24 V AC/DC

# PLC-FA-I-5X20-120-230UC - Fuse adapter

1186508

<https://www.phoenixcontact.com/us/products/1186508>



## PLC-BPT- 24DC/ 1/ACT - Relay base

2900449

<https://www.phoenixcontact.com/us/products/2900449>



6.2 mm PLC basic terminal block for output functions with push-in connection, without relay or solid-state relay, for mounting on DIN rail NS 35/7,5, with load return line connection (BB), 1 N/O contact, input voltage 24 V DC

---

## PLC-BPT- 24UC/ 1/ACT - Relay base

2900450

<https://www.phoenixcontact.com/us/products/2900450>



6.2 mm PLC basic terminal block for output functions with push-in connection, without relay or solid-state relay, for mounting on DIN rail NS 35/7,5, with load return line connection (BB), 1 N/O contact, input voltage 24 V AC/DC

# PLC-FA-I-5X20-120-230UC - Fuse adapter

1186508

<https://www.phoenixcontact.com/us/products/1186508>

## PLC-BPT-120UC/21/SO46 - Relay base

2900453

<https://www.phoenixcontact.com/us/products/2900453>



6.2 mm PLC basic terminal block against interference currents/voltages on the control side with Push-in connection, without relay or solid-state relay, for mounting on DIN rail NS 35/7,5, with integrated RCZ filter, 1 changeover contact, input voltage 120 V AC

---

## PLC-BPT-230UC/21/SO46 - Relay base

2900455

<https://www.phoenixcontact.com/us/products/2900455>



6.2 mm PLC basic terminal block against interference currents/voltages on the control side with Push-in connection, without relay or solid-state relay, for mounting on DIN rail NS 35/7,5, with integrated RCZ filter, 1 changeover contact, input voltage 230 V AC

# PLC-FA-I-5X20-120-230UC - Fuse adapter

1186508

<https://www.phoenixcontact.com/us/products/1186508>

## RIF-0-BSC/21 - Relay base

2900957

<https://www.phoenixcontact.com/us/products/2900957>



RIF-0... relay base, for miniature power relay with 1 changeover contact or identical solid-state relays, screw connection, for mounting on NS 35/7,5

---

## RIF-0-BPT/21 - Relay base

2900958

<https://www.phoenixcontact.com/us/products/2900958>



Relay base RIF-0..., for miniature power relay with 1 changeover contact or solid-state relays of the same design, Push-in connection, for mounting on NS 35/7,5

# PLC-FA-I-5X20-120-230UC - Fuse adapter

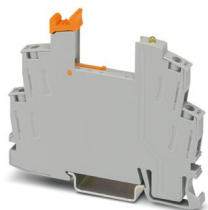
1186508

<https://www.phoenixcontact.com/us/products/1186508>

## RIF-0-BSC/ 1 - Relay base

2901872

<https://www.phoenixcontact.com/us/products/2901872>



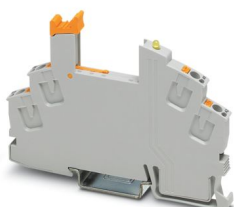
RIF-0... relay base, for miniature power relay with 1 N/O contact or identical solid-state relays, screw connection, for mounting on NS 35/7,5

---

## RIF-0-BPT/1 - Relay base

2901873

<https://www.phoenixcontact.com/us/products/2901873>



RIF-0... relay base, for miniature power relay with 1 N/O contact or solid-state relays of the same design, push-in connection, for mounting on NS 35/7,5

# PLC-FA-I-5X20-120-230UC - Fuse adapter



1186508

<https://www.phoenixcontact.com/us/products/1186508>

## PLC-BPT-125DC/21 - Relay base

2904590

<https://www.phoenixcontact.com/us/products/2904590>



6.2 mm PLC basic terminal block with Push-in connection, without relay or solid-state relay, for mounting on DIN rail NS 35/7,5, 1 changeover contact, input voltage 125 V DC

---

## PLC-BSC- 24DC/21 - Relay base

2966016

<https://www.phoenixcontact.com/us/products/2966016>



6.2 mm PLC basic terminal block with screw connection, without relay or solid-state relay, for mounting on DIN rail NS 35/7,5, 1 changeover contact, input voltage 24 V DC



# PLC-FA-I-5X20-120-230UC - Fuse adapter

1186508

<https://www.phoenixcontact.com/us/products/1186508>



## PLC-BSC- 24UC/21 - Relay base

2966029

<https://www.phoenixcontact.com/us/products/2966029>



6.2 mm PLC basic terminal block with screw connection, without relay or solid-state relay, for mounting on DIN rail NS 35/7,5, 1 changeover contact, input voltage 24 V AC/DC

---

## PLC-BSC-120UC/21 - Relay base

2966032

<https://www.phoenixcontact.com/us/products/2966032>



6.2 mm PLC basic terminal block with screw connection, without relay or solid-state relay, for mounting on DIN rail NS 35/7,5, 1 changeover contact, input voltage 120 V AC/DC

# PLC-FA-I-5X20-120-230UC - Fuse adapter

1186508

<https://www.phoenixcontact.com/us/products/1186508>



## PLC-BSC-230UC/21 - Relay base

2966045

<https://www.phoenixcontact.com/us/products/2966045>



6.2 mm PLC basic terminal block with screw connection, without relay or solid-state relay, for mounting on DIN rail NS 35/7,5, 1 changeover contact, input voltage 230 V AC/DC

---

## PLC-BSC- 24DC/ 1/ACT - Relay base

2966058

<https://www.phoenixcontact.com/us/products/2966058>



6.2 mm PLC basic terminal block for output functions with screw connection, without relay or solid-state relay, for mounting on DIN rail NS 35/7,5, with load return line connection (BB), 1 N/O contact, input voltage 24 V DC

# PLC-FA-I-5X20-120-230UC - Fuse adapter

1186508

<https://www.phoenixcontact.com/us/products/1186508>

## PLC-BSC- 5DC/21 - Relay base

2980225

<https://www.phoenixcontact.com/us/products/2980225>



6.2 mm PLC basic terminal block with screw connection, without relay or solid-state relay, for mounting on DIN rail NS 35/7,5, 1 changeover contact, input voltage 5 V DC

---

## PLC-BSC-120UC/21/SO46 - Relay base

2980319

<https://www.phoenixcontact.com/us/products/2980319>



6.2 mm PLC basic terminal block with protection against interference currents/voltages on the control side, with screw connection, without relay or solid-state relay, for mounting on DIN rail NS 35/7,5, with integrated RCZ filter, 1 changeover contact, input voltage 120 V AC

# PLC-FA-I-5X20-120-230UC - Fuse adapter

1186508

<https://www.phoenixcontact.com/us/products/1186508>



## PLC-BSC-230UC/21/SO46 - Relay base

2980335

<https://www.phoenixcontact.com/us/products/2980335>



6.2 mm PLC basic terminal block with protection against interference currents/voltages on the control side, with screw connection, without relay or solid-state relay, for mounting on DIN rail NS 35/7,5, with integrated RCZ filter, 1 changeover contact, input voltage 230 V AC

---

## PLC-BSC- 24DC/21/SO46 - Relay base

2980458

<https://www.phoenixcontact.com/us/products/2980458>



6.2 mm PLC basic terminal block with protection against interference currents/voltages on the control side, with screw connection, without relay or solid-state relay, for mounting on DIN rail NS 35/7,5, with increased input current consumption, 1 changeover contact, input voltage 24 V DC

# PLC-FA-I-5X20-120-230UC - Fuse adapter

1186508

<https://www.phoenixcontact.com/us/products/1186508>



## PLC-BSC- 24UC/ 1/ACT - Relay base

2982799

<https://www.phoenixcontact.com/us/products/2982799>



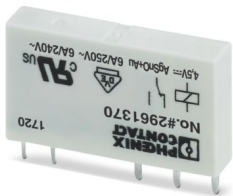
6.2 mm PLC basic terminal block for output functions with screw connection, without relay or solid-state relay, for mounting on DIN rail NS 35/7,5, with load return line connection (BB), 1 N/O contact, input voltage 24 V AC/DC

---

## REL-MR- 4,5DC/21AU - Single relay

2961370

<https://www.phoenixcontact.com/us/products/2961370>



Plug-in miniature power relay, with multi-layer gold contact, 1 changeover contact, input voltage 4.5 V DC

# PLC-FA-I-5X20-120-230UC - Fuse adapter

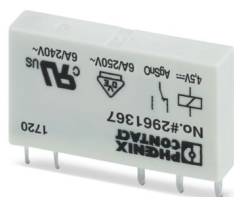
1186508

<https://www.phoenixcontact.com/us/products/1186508>

## REL-MR- 4,5DC/21 - Single relay

2961367

<https://www.phoenixcontact.com/us/products/2961367>



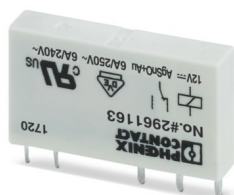
Plug-in miniature power relay, with power contact, 1 changeover contact, input voltage 4.5 V DC

---

## REL-MR- 12DC/21AU - Single relay

2961163

<https://www.phoenixcontact.com/us/products/2961163>



Plug-in miniature power relay, with multi-layer gold contact, 1 changeover contact, input voltage 12 V DC

# PLC-FA-I-5X20-120-230UC - Fuse adapter

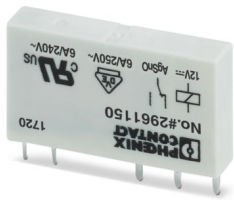
1186508

<https://www.phoenixcontact.com/us/products/1186508>

## REL-MR- 12DC/21 - Single relay

2961150

<https://www.phoenixcontact.com/us/products/2961150>



Plug-in miniature power relay, with power contact, 1 changeover contact, input voltage 12 V DC

---

## REL-MR- 12DC/21/MS - Single relay

2909641

<https://www.phoenixcontact.com/us/products/2909641>



Plug-in miniature power relay, with power contact, 1 changeover contact, manual operation, 12 V DC input voltage







# PLC-FA-I-5X20-120-230UC - Fuse adapter



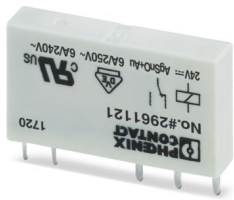
1186508

<https://www.phoenixcontact.com/us/products/1186508>

## REL-MR- 24DC/21AU - Single relay

2961121

<https://www.phoenixcontact.com/us/products/2961121>



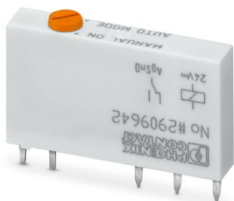
Plug-in miniature power relay, with multi-layer gold contact, 1 changeover contact, input voltage 24 V DC

---

## REL-MR- 24DC/21/MS - Single relay

2909642

<https://www.phoenixcontact.com/us/products/2909642>



Plug-in miniature power relay, with power contact, 1 changeover contact, manual operation, 24 V DC input voltage

# PLC-FA-I-5X20-120-230UC - Fuse adapter



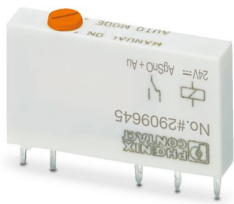
1186508

<https://www.phoenixcontact.com/us/products/1186508>

## REL-MR- 24DC/21AU/MS - Single relay

2909645

<https://www.phoenixcontact.com/us/products/2909645>



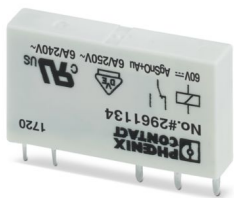
Plug-in miniature power relay, with multi-layer gold contact, 1 changeover contact, manual operation, 24 V DC input voltage

---

## REL-MR- 60DC/21AU - Single relay

2961134

<https://www.phoenixcontact.com/us/products/2961134>



Plug-in miniature power relay, with multi-layer gold contact, 1 changeover contact, input voltage 60 V DC

# PLC-FA-I-5X20-120-230UC - Fuse adapter



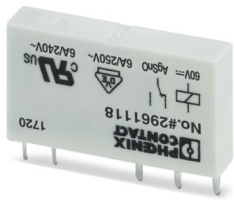
1186508

<https://www.phoenixcontact.com/us/products/1186508>

## REL-MR- 60DC/21 - Single relay

2961118

<https://www.phoenixcontact.com/us/products/2961118>



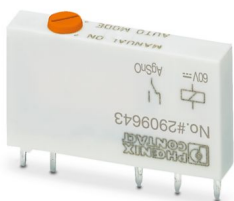
Plug-in miniature power relay, with power contact, 1 changeover contact, input voltage 60 V DC

---

## REL-MR- 60DC/21/MS - Single relay

2909643

<https://www.phoenixcontact.com/us/products/2909643>



Plug-in miniature power relay, with power contact, 1 changeover contact, manual operation, 60 V DC input voltage

# PLC-FA-I-5X20-120-230UC - Fuse adapter



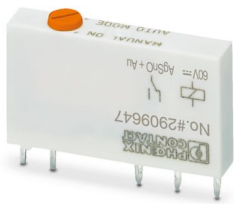
1186508

<https://www.phoenixcontact.com/us/products/1186508>

## REL-MR- 60DC/21AU/MS - Single relay

2909647

<https://www.phoenixcontact.com/us/products/2909647>



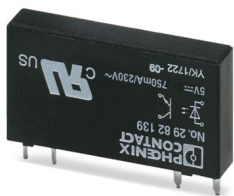
Plug-in miniature power relay, with multi-layer gold contact, 1 changeover contact, manual operation, 60 V DC input voltage

---

## OPT- 5DC/230AC/ 1 - Miniature solid-state relay

2982139

<https://www.phoenixcontact.com/us/products/2982139>



Plug-in miniature solid-state relay, power solid-state relay, 1 N/O contact, input: 5 V DC, output: 24 - 253 V AC/0.75 A

# PLC-FA-I-5X20-120-230UC - Fuse adapter



1186508

<https://www.phoenixcontact.com/us/products/1186508>

## OPT-24DC/230AC/ 1 - Miniature solid-state relay

2967950

<https://www.phoenixcontact.com/us/products/2967950>

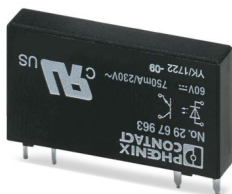


Plug-in miniature solid-state relay, power solid-state relay, 1 N/O contact, input: 24 V DC, output: 24 - 253 V AC/0.75 A

## OPT-60DC/230AC/ 1 - Miniature solid-state relay

2967963

<https://www.phoenixcontact.com/us/products/2967963>



Plug-in miniature solid-state relay, power solid-state relay, 1 N/O contact, input: 60 V DC, output: 24 - 253 V AC/0.75 A

Phoenix Contact 2024 © - all rights reserved  
<https://www.phoenixcontact.com>

Phoenix Contact USA  
586 Fulling Mill Road  
Middletown, PA 17057, United States  
(+717) 944-1300  
[info@phoenixcon.com](mailto:info@phoenixcon.com)