

End plate, Width: 1.5 mm, Colour: Blue

RAL: Ähnlich 5005

Business data

Article number	<u>27100.5</u>
Article name	PAP 1,5/2A BU
GTIN (EAN)	4044211224288
Packaging unit	20
Quantity unit	PC
Weight per piece (not including packaging)	1.25 g
Weight per piece (including packaging)	1.26 g
Unit of weight	G
Customs number	85389099
Country of origin	DE
Prio-Article	27100.6
Product description	End plate

Technical data

Dimensions

Length	45 mm
Width	1.5 mm
Height	24 mm

Materials

Material	Polyamide 6.6
Flammability class UL 94	V-0
Working temperature, min.	-40 °C
Working temperature, max.	120 °C

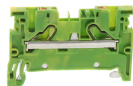
Environmental Product Compliance

REACH Conform	yes
REACH Reference date	2023-06-14
REACH Candidate Substance Note	No
RoHS Conform	yes

Media

Accessories

Terminal blocks



Protective earth terminal, Push-in connection, Mounting type: Mounting rail TS 35/7.5,
Rated cross-section: 1.5 mm², Width: 3.5 mm, Colour: Green-yellow

Article number	Article name	GTIN (EAN)	Packaging unit
<u>27001.2</u>	PSL 1,5/2A GNYE	4044211223687	50 ST



Feed-through terminal, Push-in connection, Mounting type: Mounting rail TS 35/7.5,
Rated cross-section: 1.5 mm², Width: 3.5 mm, Colour: Grey

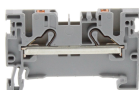
Article number	Article name	GTIN (EAN)	Packaging unit
<u>27000.6</u>	PRK 1,5/2A GR	4044211223670	50

##INVERSE##CONTA-CONNECT



Protective earth terminal, Push-in connection, Mounting type: Mounting rail TS 35/7.5,
Rated cross-section: 1.5 mm², Width: 3.5 mm, Colour: Green-yellow

Article number	Article name	GTIN (EAN)	Packaging unit
<u>27001.2</u>	PSL 1,5/2A GNYE	4044211223687	50 ST



Feed-through terminal, Push-in connection, Mounting type: Mounting rail TS 35/7.5,
Rated cross-section: 1.5 mm², Width: 3.5 mm, Colour: Grey

Article number	Article name	GTIN (EAN)	Packaging unit
<u>27000.6</u>	PRK 1,5/2A GR	4044211223670	50