

Features

- Universal Input 100~240VAC 50/60Hz
- IEC/EN/ANSI/AAMI ES 60601-1 (ED 3.1)
- EMC: IEC60601-1-2:2014(ED 4.0)
- Safety Approvals: cULus / UKCA / CB / PSE / FCC / CE / TUV / RoHS / REACH
- Means of Protection: 2 X MOPP
- Touch Current: < 100µA
- Single Output to 90W
- Regulated Output with Low Ripple Noise
- Safety Agency Requirements and EMI/EMS Certified
- Meets DoE Level VI, Energy Star, ErP Stage 2
- No Load Power Consumption Less Than 0.21W
- IEC C14 Connector
- Dimensions: L 160 x W 64 x H 35 (mm)
- Weight: 460g



The purpose of the document is to specify a Single-phase AC input, single output switching power supply. This specification is for: Desktop Power Supplies 84W~90W Series. This product is suitable for use in medical applications. This Specification defines the input, output, performance characteristics, environment, noise and safety requirements.

Models

| Model Number | Output Voltage | Output Current | Output Power |
|----------------|----------------|----------------|--------------|
| 44ATM090T-P120 | 12V DC | 7A | 84W |
| 44ATM090T-P150 | 15V DC | 6A | 90W |
| 44ATM090T-P180 | 18V DC | 5A | 90W |
| 44ATM090T-P190 | 19V DC | 4.74A | 90W |
| 44ATM090T-P240 | 24V DC | 3.75A | 90W |

General Specification

| | |
|--------------------------------|--|
| Type | Switched Mode Power Supply |
| Input Connector | IEC 320-C14 |
| Output Connection | 2.1x5.5x11.0mm +ve inner/centre |
| Number of Outputs | 1 |
| Energy Efficiency Level | VI |
| Mounting Style | Desktop |
| MTBF | 300,000 hours calculated at 25°C, by Telcoria SR-332 |
| Power Indicator | LED Indicator for power on |
| Cable Length | 1500mm(±30mm) |
| Cable Type | 16AWG/18AWG/20AWG (Depending on model) |
| Medical Approved | Yes |

Mechanical Specifications

| | |
|---------------------------|-----------------------------|
| Housing Material | Fully Enclosed Plastic Case |
| Overall Dimensions | 160mm x 64mm x 35mm |
| Overall Length | 160mm |
| Overall Depth | 64mm |
| Overall Width | 35mm |
| Weight | 460g |

Input Specifications

| | |
|----------------------------|---|
| Rated Input Voltage | 100~240Vac (±10%) |
| Rated Frequency | 50/60Hz |
| Efficiency Level VI | Level VI / Efficiency (EU) 2019/1782 |
| Input Current | 1.2A-0.5A |
| Inrush Current | 80A Max. / 230Vac (Cold Start At 25°C, Full Load) |
| Touch Current | Less than 100µA |
| Input Protection | Internal Primary Current Fuse |

Output Specifications

| | |
|----------------------------------|---|
| Output Regulation | ±5% |
| Ripple & Noise (max.) | 1% Vp-p Max. for Output Voltage @ Full Load |
| Voltage Tolerance | ±5% |
| Load Regulation | ±5% |
| No Load Power Consumption | <0.21W |
| Hold-up Time | 10mS @ Full Load |
| Transient Response | 0.5mS for 50% Load Change(Typical) |
| Number of Outputs | 1 |
| Insulation Class | I |
| Dielectric Strength | Primary to Secondary 4,000Vac for 1 Minutes |
| Isolation Resistance | 10MΩ for 500Vdc |
| Over Circuit Protection | Auto-recovery |
| Over Voltage Protection | V out * 150% MAX., latch off |
| Over Current Protection | I out * 170% MAX., auto-recovery |

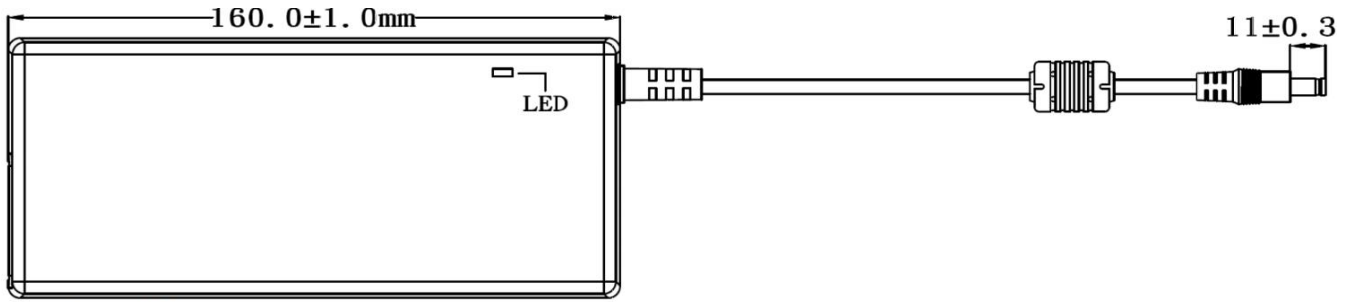
Protection Category

| | |
|----------------------------|----------|
| Means of Protection | 2 X MOPP |
|----------------------------|----------|

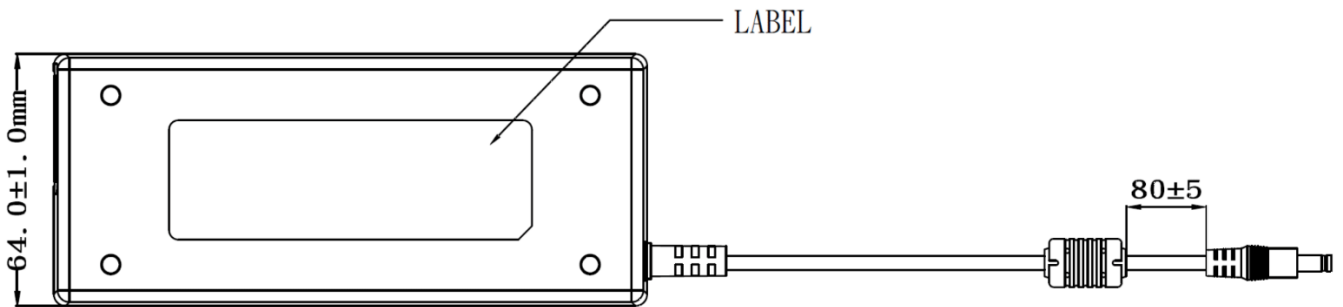
Approvals

| | |
|----------------------------------|--|
| Compliance/Certifications | CB / cULus/ FCC / CE / UKCA / T-mark / TUV / PSE |
| Safety Standard | IEC/EN/ANSI/AAMI ES 60601-1 |
| EMC Emission: | Directive 93/42/EEC (EN 60601-1-2) |

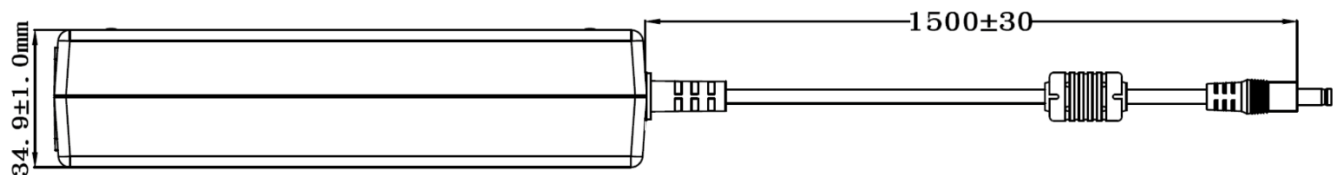
Mechanical Drawing



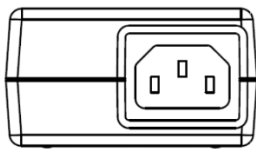
TOP-VIEW



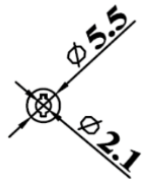
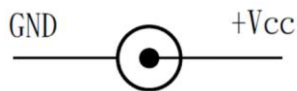
BOTTOM-VIEW



SIDE-VIEW



FRONT-VIEW



Output cable plug pin assignment

| | | |
|---|--|---|
| <p>IP IDEALPOWER</p> <p>Medical Power Supply MODEL: ATM120T-P120 INPUT: 100-240V ~ 50-60Hz 1.5-0.7A OUTPUT: 12.0V ⚡ 9.0A 108.0W CAUTION: Risk of electric Shock, dry location use only. Indoor use only. EFFICIENCY LEVEL Ⓜ http://www.adaptertech.com.tw</p> | | <p>P3(-) S(-) P4(-) P1(+) P2(+)</p> |
| <p>RoHS</p> <p>CE</p> <p>UK CA</p> <p>FC</p> <p>TVV 200</p> | <p>UL US E225703</p> <p>S/N: XXYYZZZZZZ</p> <p>MADE IN CHINA ID NO. A XXX</p> | <p>PS E JET</p> <p>IP: 100-240V AC 50-60Hz 130VA-145VA 1.5-0.7A OP: 12V DC 9A</p> <p>ADAPTER TECH.</p> |

AC - DC