

GlobTek, Inc. www.globtek.com 186 Veterans Drive, Northvale, NJ 07647 Tel. (201) 784-1000 Fax (201) 784-0111	Drawing Title: CUSTOM POWER SUPPLY(MS), Power Supply, Efficiency Level: , Case Color/Style: , Desktop/External, Regulated Switchmode AC-DC Power Supply AC Adaptor, Input Rating: 100-240V~, 50-60Hz, , Output Rating: W, 0.0V@0.0A, Output Configuration: mm, / Cond, , ,	
	Model No. CUSTOM POWER SUPPLY(MS)	
	Part No./Ordering No. D-60A	Rev A

In Addition to GlobTek Inc.'s renewed ISO9001:2008 - Quality Management System Certification, GlobTek Inc. is now certified to:

ISO13485:2003 - Medical Devices Quality Management System Certification

ISO14001:2004 - Environmental Management System Certification

ISO Certificates are available online at <http://www.globtek.com/iso-certificates/>

The acceptance of this specification and use of the product described in this document indicates the acceptance and binding of the customer to Globtek TERMS AND CONDITIONS (attached to the end of this document), which supersede all other agreements, terms, and conditions (<http://www.globtek.com/terms-and-conditions/>).

Prop 65 Statement:<https://www.globtek.com/prop-65-statement.pdf>

Footnote:

GlobTek Inc. will not be liable for the safety and performance of these power supplies if unauthorized access and repair occurs. End user should consult applicable UL, CSA or EN standards for proper installation instruction.

Limitation of Use:

GlobTek products are intended for use with commercial, medical, and/or industrial equipment only. GlobTek product are not authorized for use as mission critical components in life support hazardous environment, nuclear or aircraft applications without prior written approval from the CEO of GlobTek Inc.

Contents of this document are subject to change without prior notice.

Customer Approval of Specification:

Please approve, sign and send back to GlobTek so we can complete order processing.

A delay in receipt of this form will delay delivery schedule.

Company Name:

Customer P/N:

Quote Number:

Date:

Authorized Representative Name:

Authorized Representative Signature:

GlobTek, Inc. www.globtek.com 186 Veterans Drive, Northvale, NJ 07647 Tel. (201) 784-1000 Fax (201) 784-0111	Drawing Title: CUSTOM POWER SUPPLY(MS), Power Supply, Efficiency Level: , Case Color/Style: , Desktop/External, Regulated Switchmode AC-DC Power Supply AC Adaptor, Input Rating: 100-240V~, 50-60Hz, , Output Rating: W, 0.0V@0.0A, Output Configuration: mm, / Cond, , ,		
	Model No. <u>CUSTOM POWER SUPPLY(MS)</u>		
	Part No./Ordering No. <u>D-60A</u>		Rev A

REVISION HISTORY

REV	DESCRIPTION	SUB	DATE	APPROVED
A	Release to new system	DR	11/10/2020	QA

AGENCY ONLINE DOCUMENTS <http://www.globtek.info/certs/GT-93036/>

RoHS/RoHS3 Declaration https://www.globtek.com/pdf/rohs_cert/01t30000002p8mMAAQ

REACH Declaration https://www.globtek.com/pdf/iso_certificates/REACH.pdf

Conflict Minerals Declaration <https://www.globtek.com/pdf/conflict-minerals.pdf>

Prop 65 Statement <https://en.globtek.com/prop-65-statement.pdf>

IPXY rating is based on 3rd party testing and customers should check suitability and test system level IPXY rating before ordering.

SPECIFICATION

MODEL		D-60A	
OUTPUT	OUTPUT NUMBER	CH1	CH2
	DC VOLTAGE	5V	12V
	RATED CURRENT	4A	3A
	CURRENT RANGE	0.3 ~ 6A	0.2 ~ 4A
	RATED POWER	56W	
	RIPPLE & NOISE (max.) Note.2	75mVp-p	150mVp-p
	VOLTAGE ADJ. RANGE	CH1 : 4.75 ~ 5.5V	
	VOLTAGE TOLERANCE Note.3	±2.0%	±6.0%
	LINE REGULATION	±0.5%	±1.0%
	LOAD REGULATION	±0.5%	±4.0%
INPUT	SETUP, RISE TIME	300ms, 50ms / 230VAC	800ms, 50ms / 115VAC at full load
	HOLD UP TIME (Typ.)	80ms/230VAC	10ms/115VAC at full load
	VOLTAGE RANGE	85 ~ 264VAC	120 ~ 370VDC
	FREQUENCY RANGE	47 ~ 63Hz	
	EFFICIENCY(Typ.)	73%	76%
	AC CURRENT (Typ.)	2A/115VAC	1A/230VAC
PROTECTION	INRUSH CURRENT (Typ.)	COLD START 20A/115VAC	40A/230VAC
	LEAKAGE CURRENT	<3.5mA / 240VAC	
	OVERLOAD	105 ~ 150% rated output power Protection type : Hiccup mode, recovers automatically after fault condition is removed.	
ENVIRONMENT	OVER VOLTAGE	5V : 5.75 ~ 6.75V Protection type : Hiccup mode, recovers automatically after fault condition is removed.	
	WORKING TEMP.	-10 ~ +60℃ (Refer to "Derating Curve")	
	WORKING HUMIDITY	20 ~ 90% RH non-condensing	
	STORAGE TEMP., HUMIDITY	-20 ~ +85℃, 10 ~ 95% RH	
SAFETY & EMC (Note 4)	TEMP. COEFFICIENT	±0.03%/℃ (0 ~ 50℃) on +5V output	
	VIBRATION	10 ~ 500Hz, 2G 10min./1cycle, period for 60min. each along X, Y, Z axes	
	SAFETY STANDARDS	UL1012, UL60950-1, TUV EN60950-1 approved	
	WITHSTAND VOLTAGE	I/P-O/P:3KVAC I/P-FG:1.5KVAC O/P-FG:0.5KVAC	
OTHERS	ISOLATION RESISTANCE	I/P-O/P, I/P-FG, O/P-FG:100M Ohms / 500VDC / 25℃ / 70% RH	
	EMC EMISSION	Compliance to EN55022 (CISPR22) Class B, EN61000-3-2,-3	
	EMC IMMUNITY	Compliance to EN61000-4-2,3,4,5,6,8,11, EN55024, light industry level, criteria A	
NOTE	MTBF	301.2K hrs min. MIL-HDBK-217F (25℃)	
	DIMENSION	159*97*38mm (L*W*H)	
	PACKING	0.54Kg; 24pcs/13.8Kg/0.75CUFT	

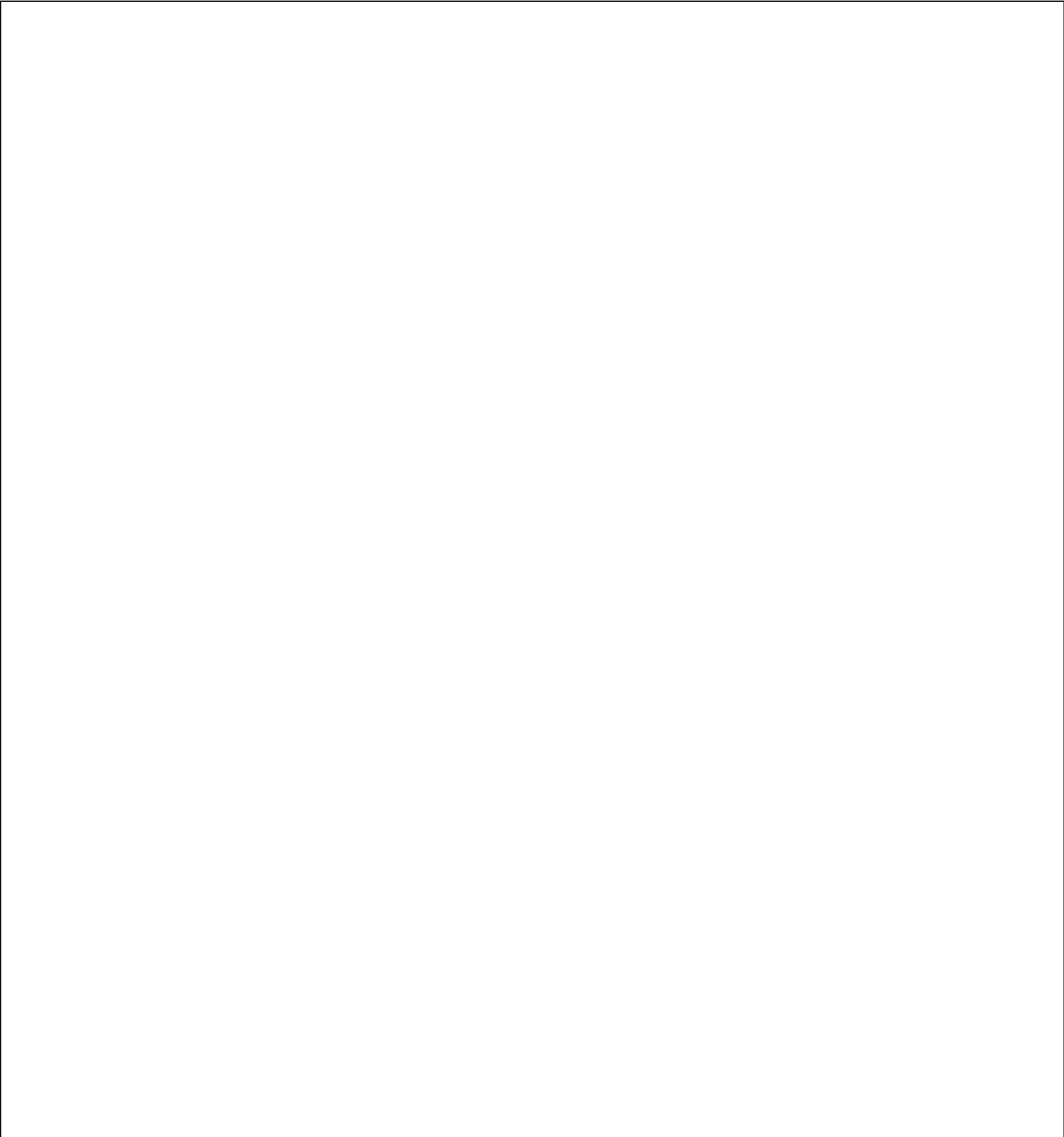
- All parameters NOT specially mentioned are measured at 230VAC input, rated load and 25℃ of ambient temperature.
- Ripple & noise are measured at 20MHz of bandwidth by using a 12" twisted pair-wire terminated with a 0.1uF & 47uF parallel capacitor.
- Tolerance : includes set up tolerance, line regulation and load regulation.
- The power supply is considered a component which will be installed into a final equipment. The final equipment must be re-confirmed that it still meets EMC directives. For guidance on how to perform these EMC tests, please refer to "EMI testing of component power supplies." (as available on <http://www.meanwell.com>)

PROPRIETARY INFORMATION

PROPRIETARY OF GLOBTEK, INC. ANY REPRODUCTION, DISCLOSURE OR USE OF THIS DRAWING, IN WHOLE OR IN PART, IS HEREBY PROHIBITED EXCEPT AS SPECIFIED IN WRITING BY GLOBTEK, INC. © GlobTek, Inc. 2012 - 2024

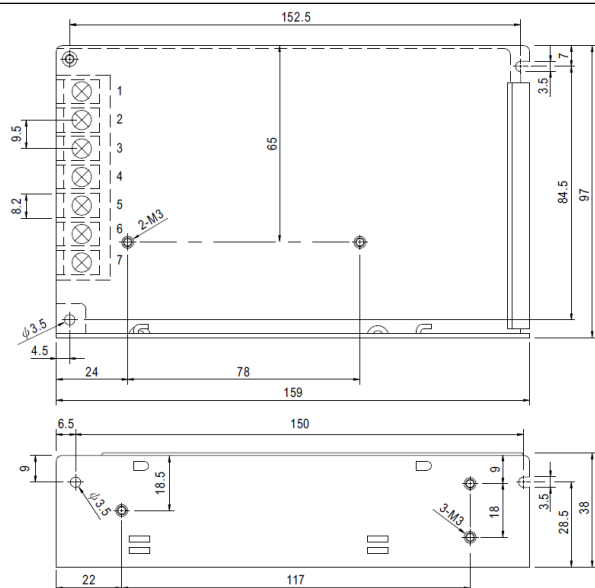
quest /06/27/2024 3:40:25 AM

GlobTek, Inc. www.globtek.com 186 Veterans Drive, Northvale, NJ 07647 Tel. (201) 784-1000 Fax (201) 784-0111	Drawing Title: CUSTOM POWER SUPPLY(MS), Power Supply, Efficiency Level: , Case Color/Style: , Desktop/External, Regulated Switchmode AC-DC Power Supply AC Adaptor, Input Rating: 100-240V~, 50-60Hz, , Output Rating: W, 0.0V@0.0A, Output Configuration: mm, / Cond, , ,	
	Model No. CUSTOM POWER SUPPLY(MS)	
	Part No./Ordering No. D-60A	Rev A

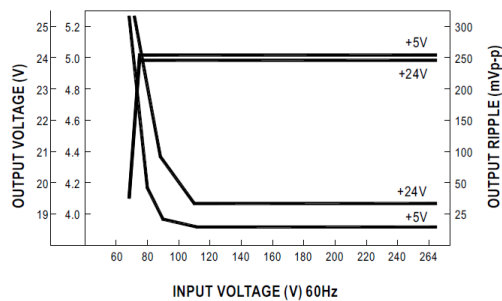
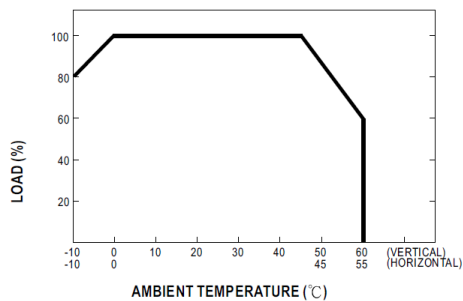
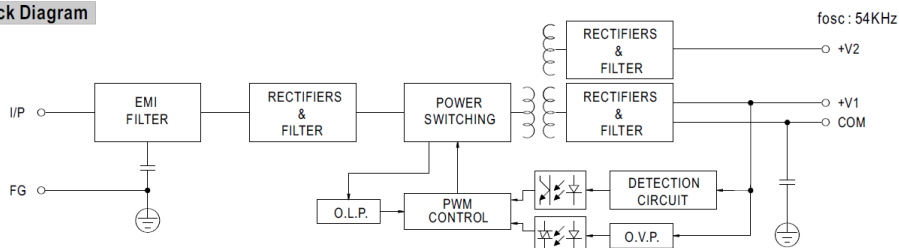


Drawing Title: CUSTOM POWER SUPPLY(MS), Power Supply, Efficiency Level: , Case Color/Style: , Desktop/External, Regulated Switchmode AC-DC Power Supply AC Adaptor, Input Rating: 100-240V~, 50-60Hz, , Output Rating: W, 0.0V@0.0A, Output Configuration: mm, / Cond, ,

Rev A



Pin No.	Assignment	Pin No.	Assignment
1	AC/L	4	DC OUTPUT +V2
2	AC/N	5	DC OUTPUT +V1
3	FG \perp	6,7	DC OUTPUT COM



GlobTek, Inc. www.globtek.com 186 Veterans Drive, Northvale, NJ 07647 Tel. (201) 784-1000 Fax (201) 784-0111	Drawing Title: CUSTOM POWER SUPPLY(MS), Power Supply, Efficiency Level: , Case Color/Style: , Desktop/External, Regulated Switchmode AC-DC Power Supply AC Adaptor, Input Rating: 100-240V~, 50-60Hz, , Output Rating: W, 0.0V@0.0A, Output Configuration: mm, / Cond, , ,	
	Model No. CUSTOM POWER SUPPLY(MS)	
	Part No./Ordering No. D-60A	Rev A

PACKAGING

Packing Spec P/N:	
Box Qty:	1
Gift Box Size (mm):	
Gift Box Color:	White
Master Carton Size (mm):	TBD
Master Carton Cubic Volume (m³): 0.00	
Master GW (Kg):	kg
wt Ea. (Kg):	kg
wt Ea. (Kg):	kg
LABEL SPECS: ,	
PACK SPEC:	